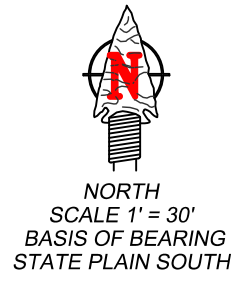


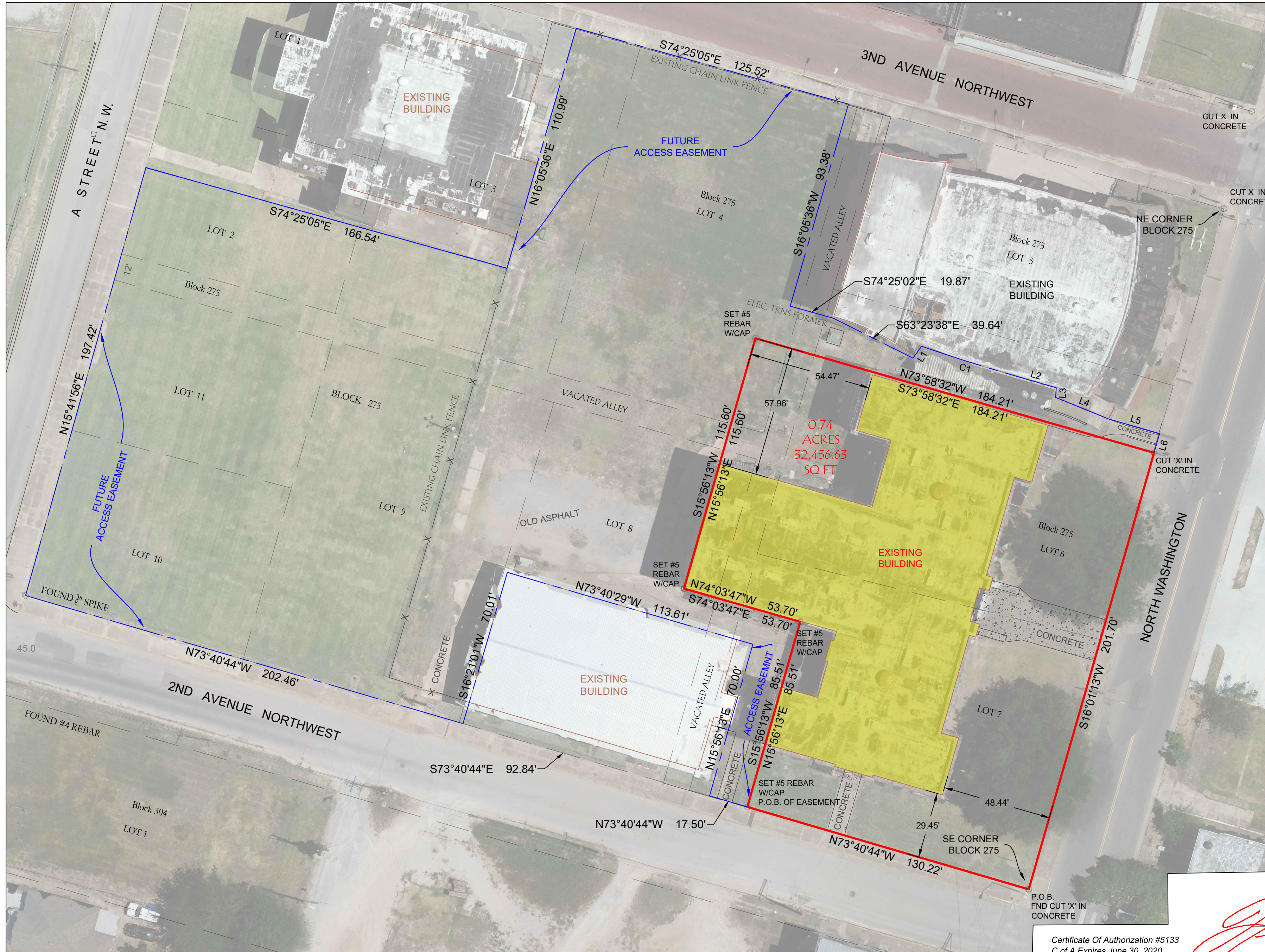
CERTIFICATE OF SURVEY

DATE: 6-22-2020
 SURVEY FOR: VASQUEZ
 LOCATION: NORTH WASHINGTON, ARDMORE, OK



Parcel Line Table		
Line #	Length	Direction
L1	6.49'	N 35°15'07" E
L2	20.31'	S 73°52'13" E
L3	4.30'	S 3°36'57" W
L4	25.37'	S 67°53'57" E
L5	23.57'	S 73°58'32" E
L6	8.88'	S 16°01'13" W

Curve Table					
Curve #	Length	Radius	Delta	Chord Direction	Chord Length
C1	42.33'	818.54'	2°57'47"	S 72° 23' 19" E	42.33'



LEGAL DESCRIPTION

A TRACT OF LAND BEING PART OF LOTS 4,6,7 AND 8 BLOCK 275 OF THE ORIGINAL PLAT OF CITY OF ARDMORE LOTS AND BLOCKS, FURTHER DESCRIBED AS FOLLOWS:

BEGINNING AT THE SE CORNER OF SAID LOT 7, THENCE N 73°40'44" W ALONG THE SOUTH LINE OF LOT 7 A DISTANCE OF 130.22'; THENCE N 15°56'13" E A DISTANCE OF 85.51'; THENCE N 74°03'47" W A DISTANCE OF 53.70'; THENCE N 15°56'13" E A DISTANCE OF 115.60'; THENCE S 73°58'32" E TO A POINT ON THE EAST LINE OF LOT 6, A DISTANCE OF 184.21'; THENCE S 16°01'13" W ALONG THE EAST LINE OF LOTS 6 AND 7 A DISTANCE OF 201.70', SAID POINT BEING THE TRUE POINT OF BEGINNING, CONTAINING 0.74 ACRES MORE OR LESS, ABOVE LEGAL WAS WRITTEN BY J. STEVEN FOX R.L.S. #1165 ON JUNE 22, 2020 USING OK STATE PLANE SOUTH 3502 SOUTH AS A BASIS OF BEARING

FUTURE ACCESS EASEMENT

AN INGRESS AND EGRESS ACCESS EASEMENT FURTHER DESCRIBED AS FOLLOWS:

A TRACT OF LAND BEING PART OF LOTS 2,3,4,6,7,8 AND 9 AND ALL OF LOTS 9,10 AND 11 OF BLOCK 275 OF THE ORIGINAL PLAT OF CITY OF ARDMORE LOTS AND BLOCKS, FURTHER DESCRIBED AS FOLLOWS: COMMENCING AT THE SE CORNER OF SAID LOT 7, THENCE N 73°40'44" W ALONG THE SOUTH LINE OF LOT 7 A DISTANCE OF 130.22' TO THE TRUE POINT OF BEGINNING; THENCE N 73°40'44" W ALONG THE SOUTH LINE OF LOT 7 A DISTANCE OF 17.50'; THENCE N 15°56'13" E A DISTANCE OF 70.00'; THENCE N 73°40'29" W A DISTANCE OF 113.61'; THENCE S 16°21'01" W TO A POINT ON THE SOUTH LINE OF LOT 8 A DISTANCE OF 70.01'; THENCE N 73°40'44" W ALONG THE SOUTH LINE OF SAID LOTS 8,9 AND 10 A DISTANCE OF 202.46'; THENCE N 15°41'56" E A DISTANCE OF 197.42'; THENCE S 74°25'05" E A DISTANCE OF 166.54'; THENCE N 16°05'36" E A DISTANCE OF 110.99'; THENCE S 74°25'05" E A DISTANCE OF 125.52'; THENCE S 16°05'36" W A DISTANCE OF 93.38'; THENCE S 74° 25' 02" E A DISTANCE OF 19.87'; THENCE S 63°23'38" E A DISTANCE OF 39.64'; THENCE N 35°15'07" E A DISTANCE OF 6.49' THENCE AROUND A NON TANGENTIAL CURVE TO THE LEFT HAVING A RADIUS OF 818.54', A ARC LENGTH OF 42.33', A CHORD BEARING OF S 72°23'19" E, A CHORD DISTANCE OF 42.33' AND A DELTA ANGLE OF 02°57'47"; THENCE S 73°52'13" E A DISTANCE OF 20.31'; THENCE S 3°36'57" W A DISTANCE OF 4.30'; THENCE S 67°53'57" E A DISTANCE OF 25.37'; THENCE S 73°58'32" E A DISTANCE OF 23.57'; THENCE S 16°01'13" W A DISTANCE OF 8.88'; THENCE N 73°58'32" W A DISTANCE OF 184.21'; THENCE S 15°56'13" W A DISTANCE OF 115.60'; THENCE S 74°03'47" E A DISTANCE OF 53.70'; THENCE S 15°56'13" W A DISTANCE OF 85.51'; SAID POINT BEING THE TRUE POINT OF BEGINNING, CONTAINING 1.58 ACRES MORE OR LESS, ABOVE LEGAL WAS WRITTEN BY J. STEVEN FOX R.L.S. #1165 ON JUNE 22, 2020 USING OK STATE PLANE SOUTH 3502 SOUTH AS A BASIS OF BEARING

I, J. STEVEN FOX, a Registered Professional Land Surveyor for the State of Oklahoma, hereby state that this plat of survey meets or exceeds the Oklahoma Minimum Technical Standards for the practice of land surveying. I further state that said survey, shown on this certificate was made in accordance with the original survey of this covering area, and that this plat is a true and correct representation of survey and/or improvements thereon.

J. Steven Fox
 J. STEVEN FOX
 L.S. No. 1165 Oklahoma



Certificate of Authorization #5133
 C of A Expires June 30, 2020
 (c) Copyright 2020 Fox Engineering Inc.