

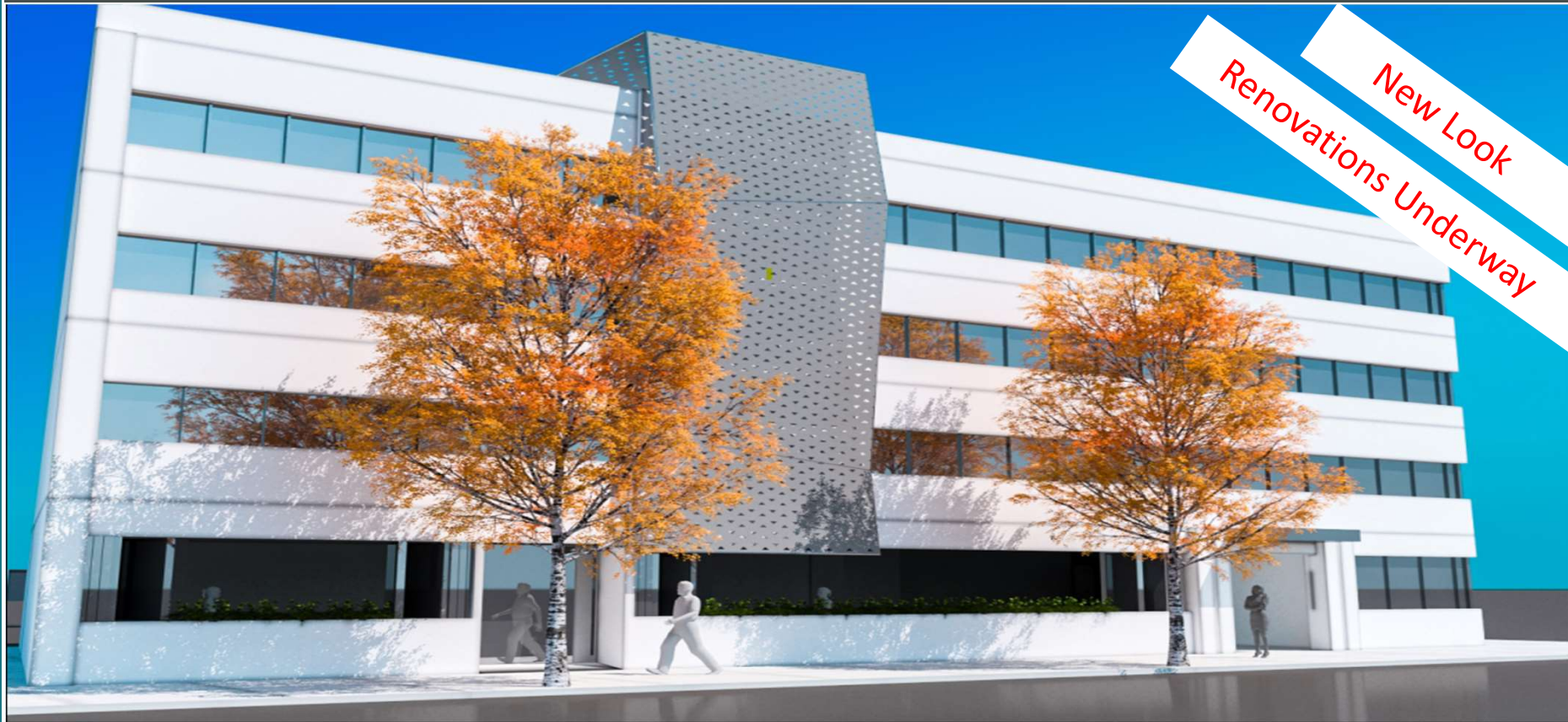
Leasing Now

4419 Van Nuys Boulevard

Sherman Oaks, Ca 91436



OFFICE / MEDICAL SUITES AVAILABLE



Renovations Underway
New Look

PROPERTY HIGHLIGHTS:

Accessibility: Easy Access to 101 Freeway at Van Nuys Boulevard

Location: Highly desirable Sherman Oaks address

Amenities: Walking distance to numerous restaurants and retail



PACIFIC PARTNERS
COMMERCIAL, INC.

23901 Calabasas Rd., Suite 2024
Calabasas, CA 91302
Office 818.862.2848

Brian Forster

President
Direct: 818.862.2774
brian@pacificpartnerscre.com
CA BRE: 01803294

Lisa Shirtliff

Investment Sales & Leasing
Direct: 818.878.8853
lisa@pacificpartnerscre.com
CA BRE: 01891301

The information herein has been furnished from sources which we deem reliable, but has not been verified by Pacific Partners Commercial, Inc. or its agents and for which we assume no liability. This marketing material is to be used for conceptual purposes only. All measurements and numerical data are approximate and to be verified by the prospective buyer.

4419 Van Nuys Boulevard

Sherman Oaks, CA. 91436



Current Availability

Suite #	Suite RSF	Rate/SF/Mo	Notes
101	7,191	\$4.50 NNN	Former Hamburger Hamlet – Restaurant Space
200	1,222	\$2.95 FSG	4 window offices, 1 interior office, waiting room
209	2,753	\$2.95 FSG	4 window offices, break room, open area
300	2,056	\$2.95 FSG	Multiple window offices, open area
305	652	\$2.95 FSG	2 window offices, 1 interior office
400	1,434	\$2.95 FSG	4 window offices, closed reception

Parking Rates: \$75.00 Monthly



Brian Forster
 President
 Direct: 818.862.2774
brian@pacificpartnerscre.com
 CA BRE: 01803294

Lisa Shirliff
 Investment Sales & Leasing
 Direct: 818.878.8853
lisa@pacificpartnerscre.com
 CA BRE: 01891301

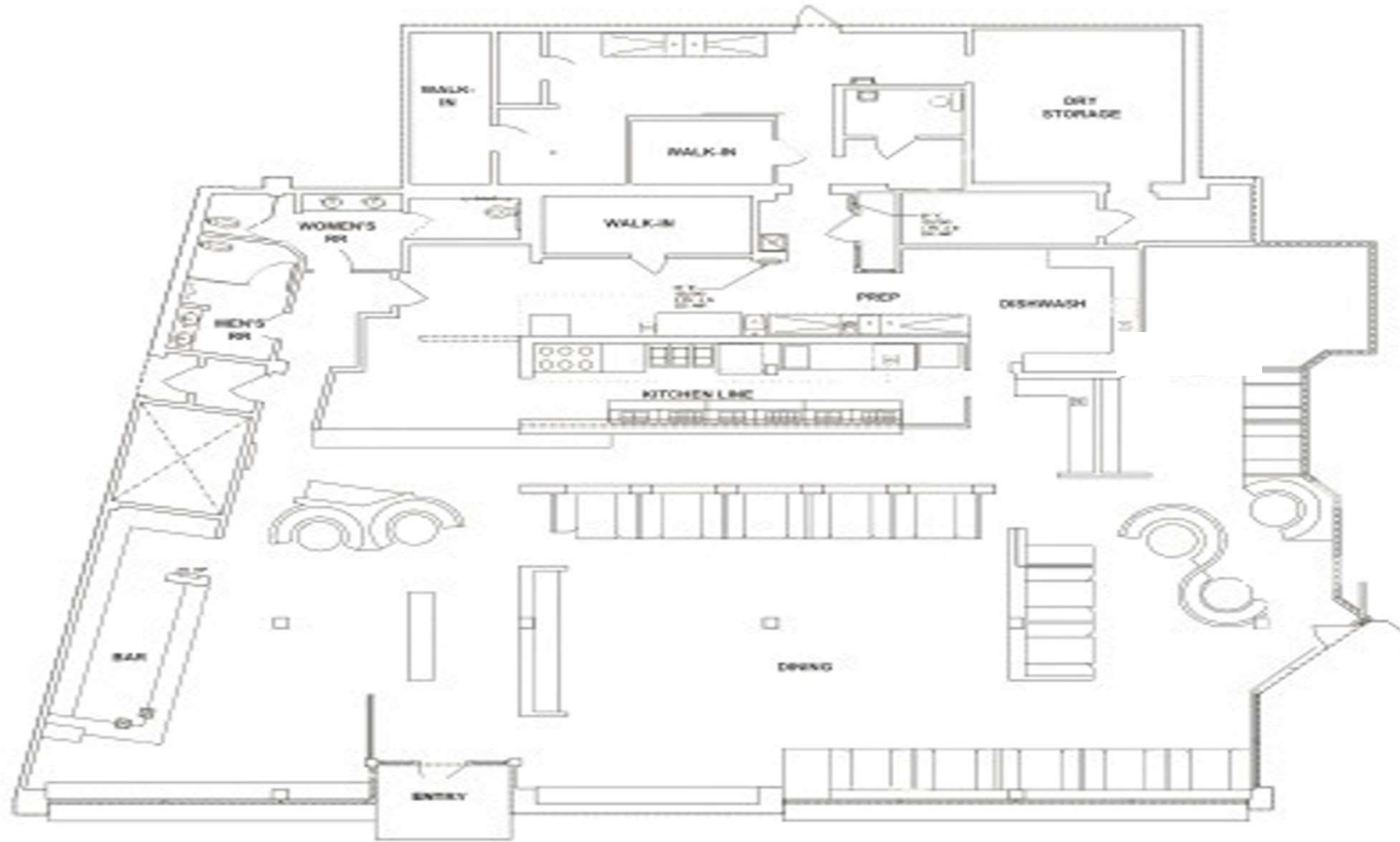
PACIFIC PARTNERS COMMERCIAL
 23901 Calabasas Rd., Suite 2024
 Calabasas, CA 91302
 Office 818.862.2774

Leasing Information

Suite 100 – 7,191 Square feet

4419 Van Nuys Boulevard

Sherman Oaks, CA. 91436



Brian Forster
President
Direct: 818.862.2774
brian@pacificpartnerscre.com
CA BRE: 01803294

Lisa Shirliff
Investment Sales & Leasing
Direct: 818.878.8853
lisa@pacificpartnerscre.com
CA BRE: 01891301

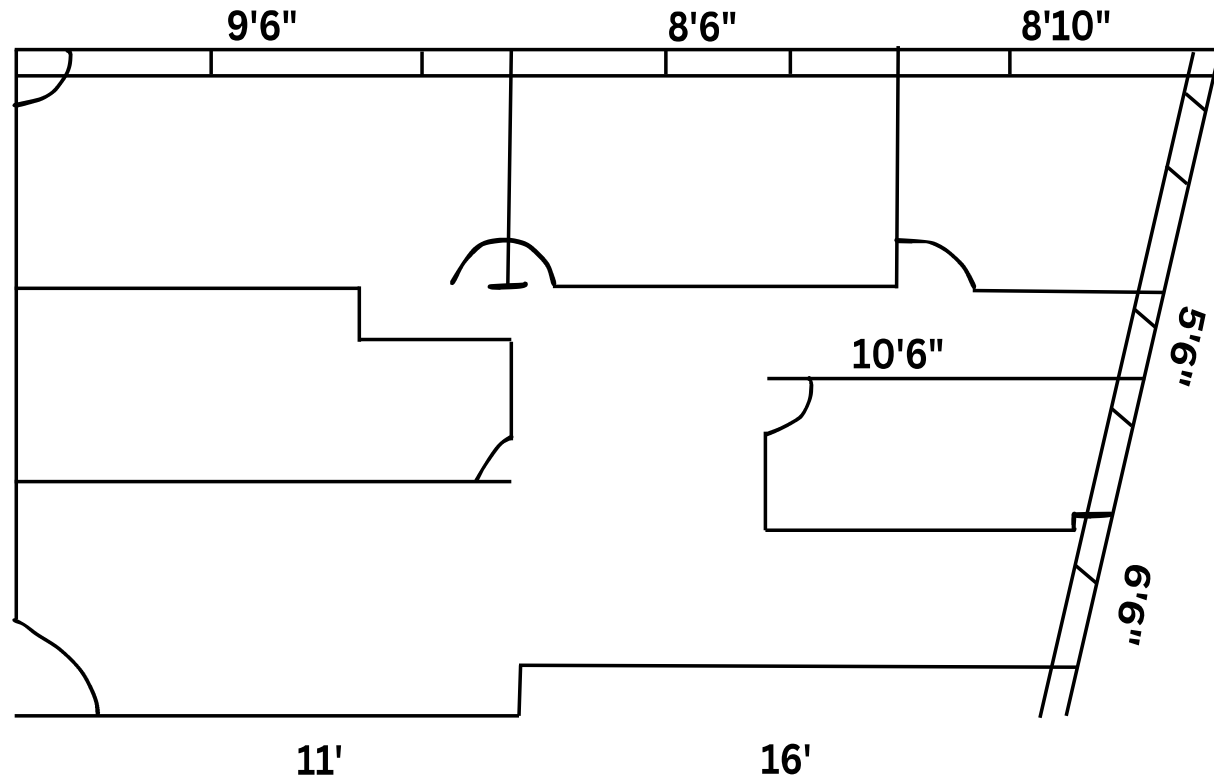
PACIFIC PARTNERS COMMERCIAL
23901 Calabasas Rd., Suite 2024
Calabasas, CA 91302
Office 818.862.2774

Leasing Information

Suite 200 - 1,222 Rentable Square Feet

4419 Van Nuys Boulevard

Sherman Oaks, CA. 91436



Brian Forster
President
Direct: 818.862.2774
brian@pacificpartnerscre.com
CA BRE: 01803294

Lisa Shirliff
Investment Sales & Leasing
Direct: 818.878.8853
lisa@pacificpartnerscre.com
CA BRE: 01891301

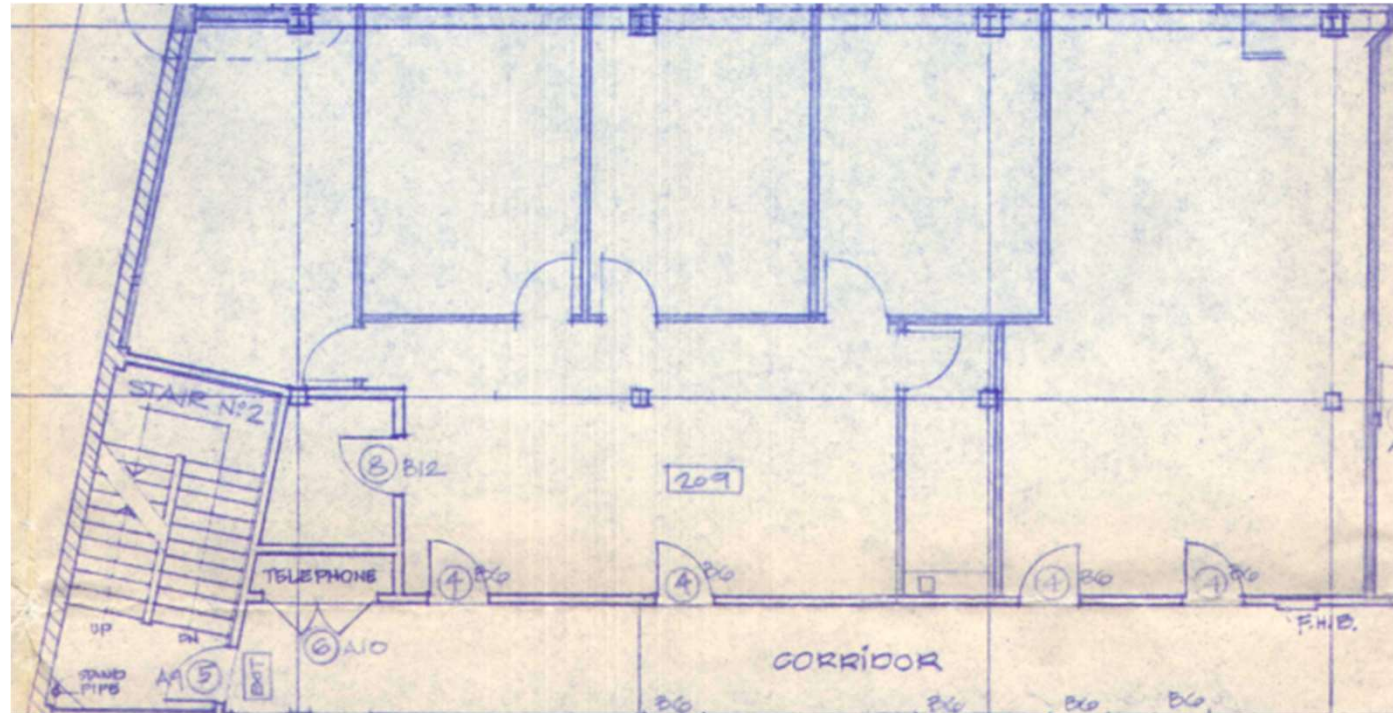
PACIFIC PARTNERS COMMERCIAL
23901 Calabasas Rd., Suite 2024
Calabasas, CA 91302
Office 818.862.2774

Leasing Information

Suite 209 - 2,753 Rentable Square Feet

4419 Van Nuys Boulevard

Sherman Oaks, CA. 91436



Brian Forster

President
Direct: 818.862.2774
brian@pacificpartnerscre.com
CA BRE: 01803294

Lisa Shirliff

Investment Sales & Leasing
Direct: 818.878.8853
lisa@pacificpartnerscre.com
CA BRE: 01891301

PACIFIC PARTNERS COMMERCIAL

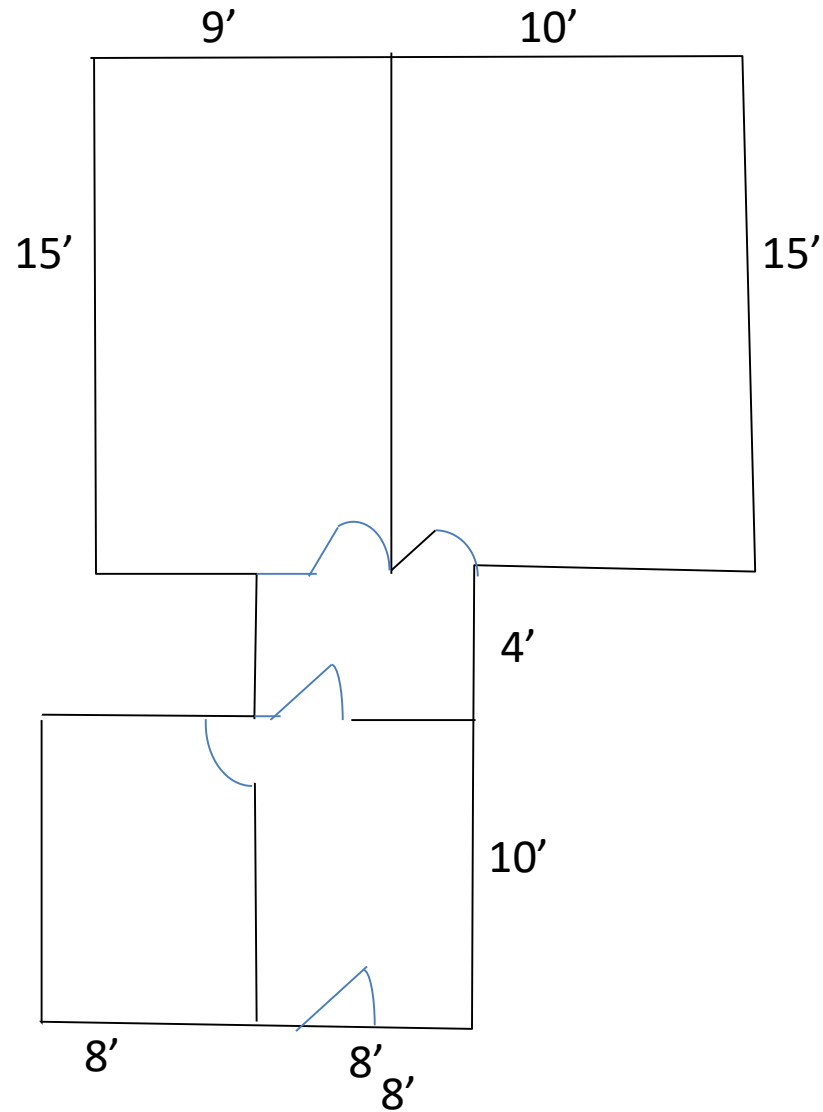
23901 Calabasas Rd., Suite 2024
Calabasas, CA 91302
Office 818.862.2774

Leasing Information

Suite 305 – 652 Rentable Square Feet

4419 Van Nuys Boulevard

Sherman Oaks, CA. 91436



Brian Forster
President
Direct: 818.862.2774
brian@pacificpartnerscre.com
CA BRE: 01803294

Lisa Shirliff
Investment Sales & Leasing
Direct: 818.878.8853
lisa@pacificpartnerscre.com
CA BRE: 01891301

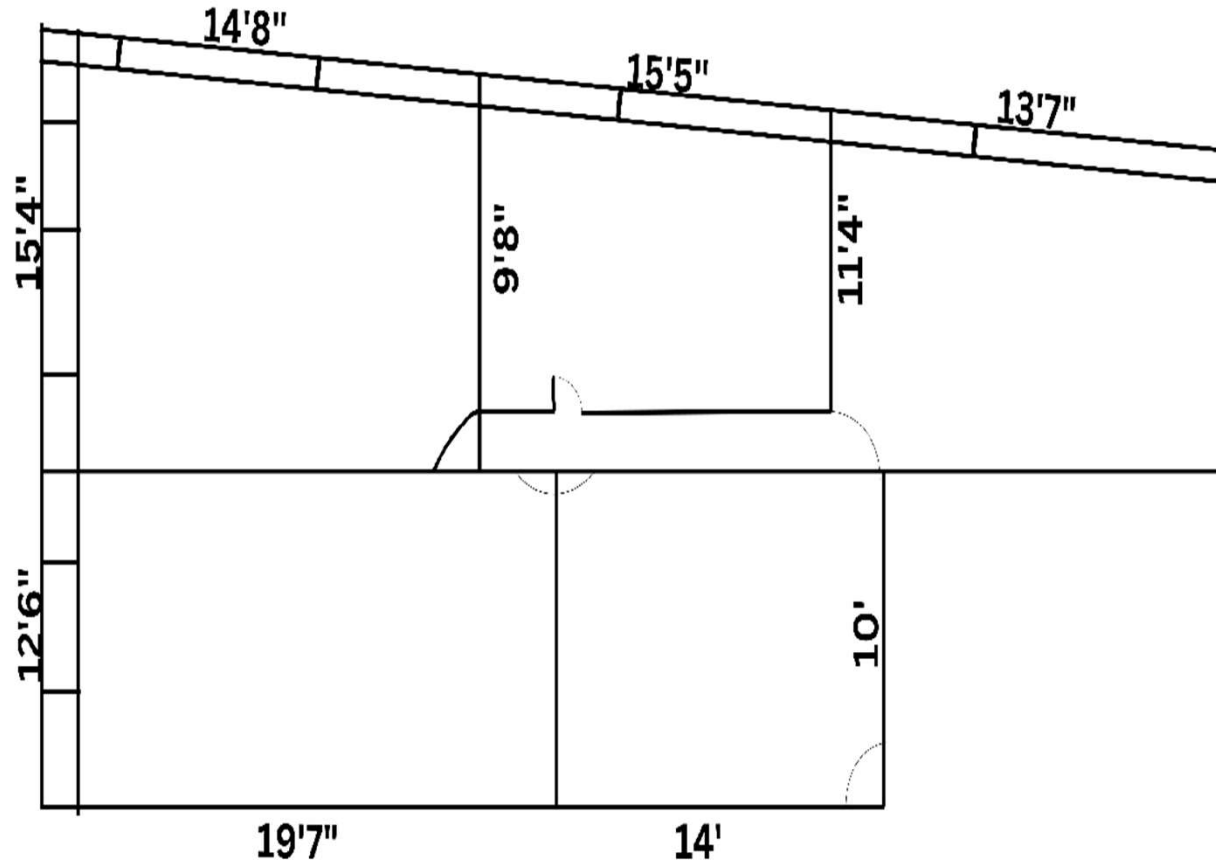
PACIFIC PARTNERS COMMERCIAL
23901 Calabasas Rd., Suite 2024
Calabasas, CA 91302
Office 818.862.2774

Leasing Information

Suite 400 – 1,434 Rentable Square Feet

4419 Van Nuys Boulevard

Sherman Oaks, CA. 91436



Brian Forster

President

Direct: 818.862.2774

brian@pacificpartnerscre.com

CA BRE: 01803294

Lisa Shirliff

Investment Sales & Leasing

Direct: 818.878.8853

lisa@pacificpartnerscre.com

CA BRE: 01891301

PACIFIC PARTNERS COMMERCIAL

23901 Calabasas Rd., Suite 2024

Calabasas, CA 91302

Office 818.862.2774

4419 Van Nuys Boulevard

Sherman Oaks, CA. 91436



Brian Forster
President
Direct: 818.862.2774
brian@pacificpartnerscre.com
CA BRE: 01803294

Lisa Shirliff
Investment Sales & Leasing
Direct: 818.878.8853
lisa@pacificpartnerscre.com
CA BRE: 01891301

PACIFIC PARTNERS COMMERCIAL
23901 Calabasas Rd., Suite 2024
Calabasas, CA 91302
Office 818.862.2848