



**PROPERTY
RESERVE**

Social Hall
PLAZA
at CITY CREEK

Jordan Johnson
801.321.8711
Jordan.Johnson@propertyreserve.org



Address

150 East Social Hall Avenue, Salt Lake City, Utah 84111

Social Hall Plaza Overview

Class A office space

161,307 square feet

6 floors

Completed 1998

Remodeled in 2019

Social Hall Plaza at City Creek is a six-story, multi-tenant office building in the heart of Salt Lake City's central business district. Recently remodeled and updated lobby with added amenities, which include a fitness center with showers and a bike storage area. Social Hall Plaza features covered garage parking, close proximity to Harmon's Market, and provides nearby access to City Creek Center, one of the nation's largest and most acclaimed mixed-use downtown redevelopment projects. This unique environment features a retractable glass roof, the very popular City Creek Center food court, a creek that runs through the property, a pedestrian sky bridge and more. City Creek Center features world-class fashion and dining destinations with over 100 national stores and restaurants.

Parking

Covered-executive parking below the building & multiple other options for parking needs at prevailing market rates

Public Transit

Within easy walking distance to bus stations, TRAX stations, and Frontrunner stations

Fiber Optics

Multiple carriers with dark fiber and extensive service options available

Elevators

3 lobby elevators (including freight) and 2 parking elevators—all updated in 2019

Life Safety

Emergency generator supplies power to elevators, emergency lighting, and pressure fans

Lease Rate

Full service with base-year stop

Improvements

Generous TI packages available

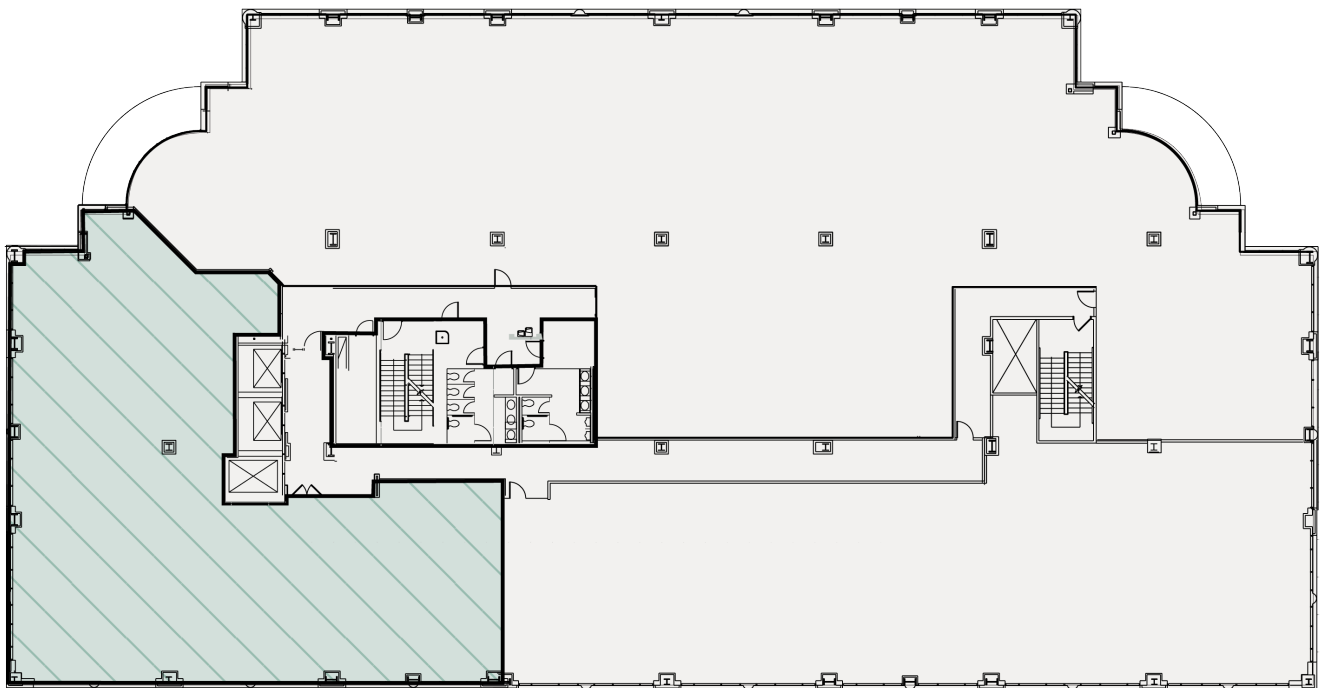
Suite 250

Rentable Square Feet: 6,200

Lease Rates: \$26.00/RSF

Status: Available

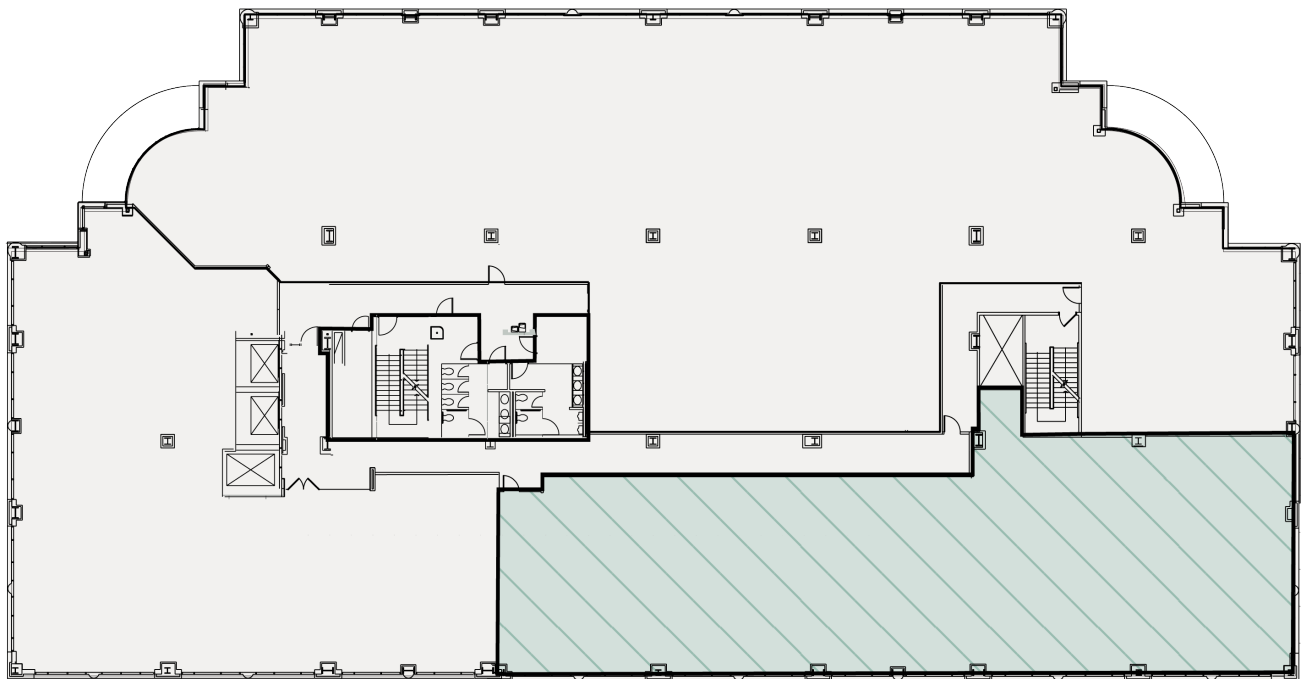
Condition: Gray shell ready for immediate build-out



Suite 275

Rentable Square Feet: 7,294
Lease Rates: \$26.00/RSF

Status: Available
Condition: Gray shell ready for immediate build-out



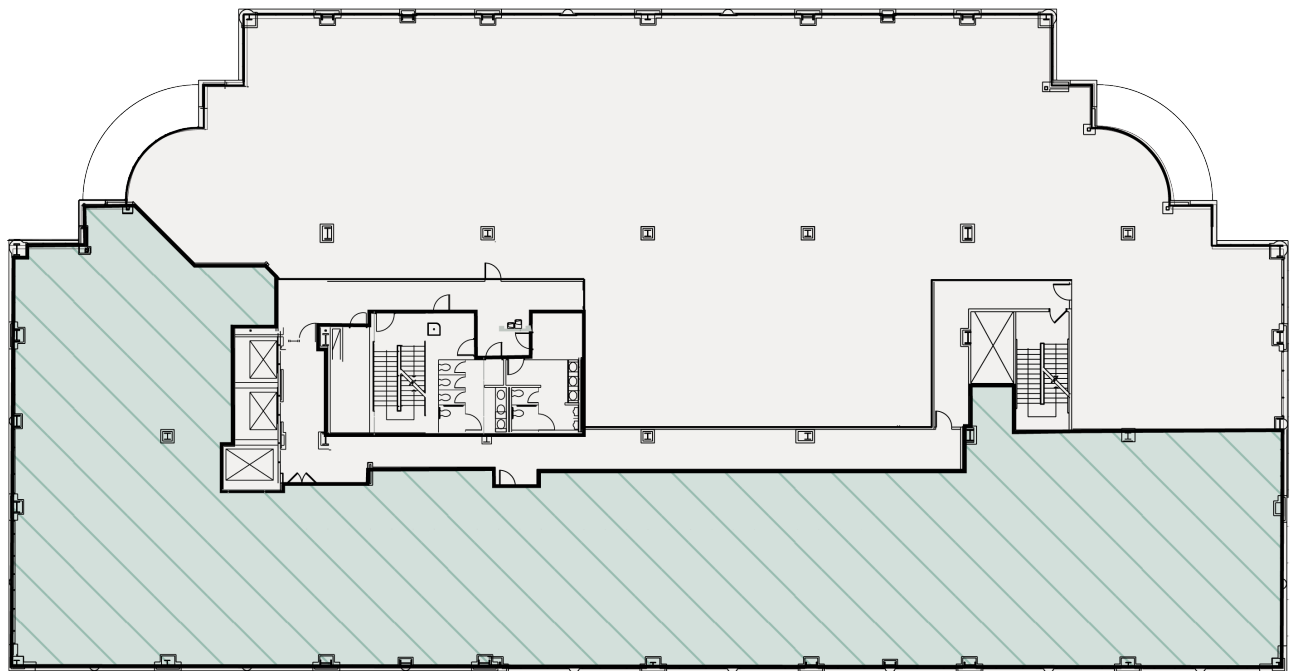
Suite 250 + 275

Rentable Square Feet: 13,495

Lease Rates: \$26.00/RSF

Status: Available

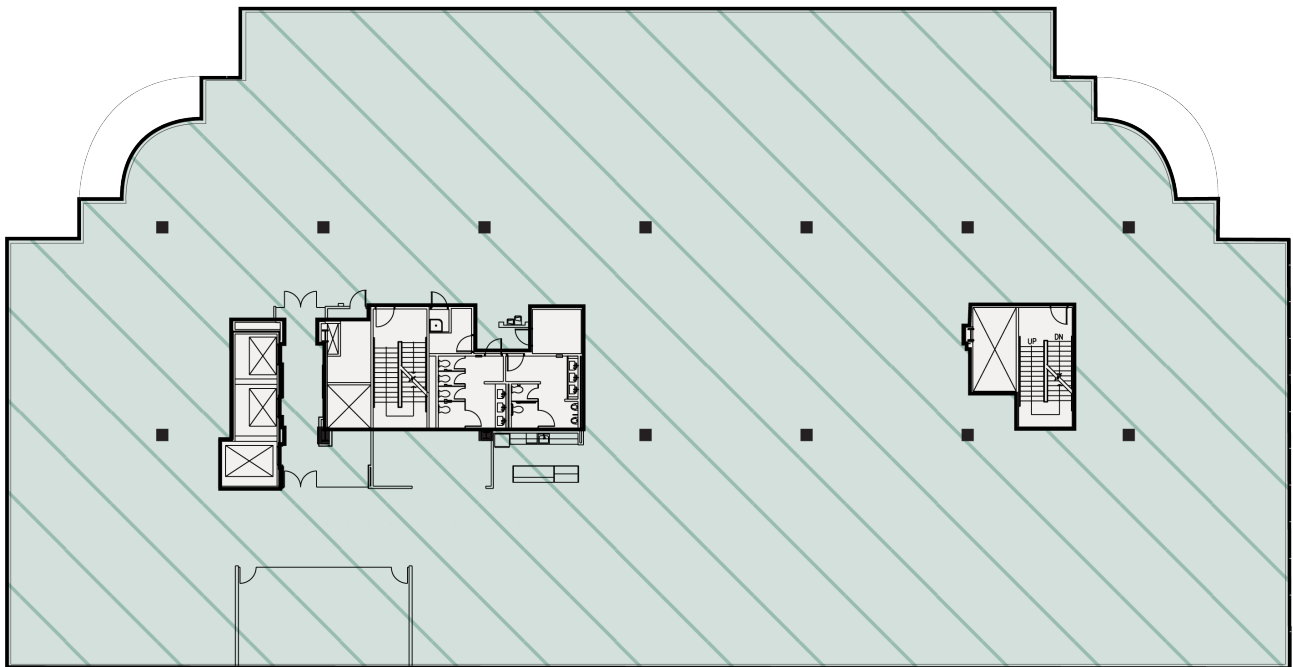
Condition: Two suites that can be combined into one. Gray shell.



Suite 300

Rentable Square Feet: 28,025
Lease Rates: \$26.00/RSF

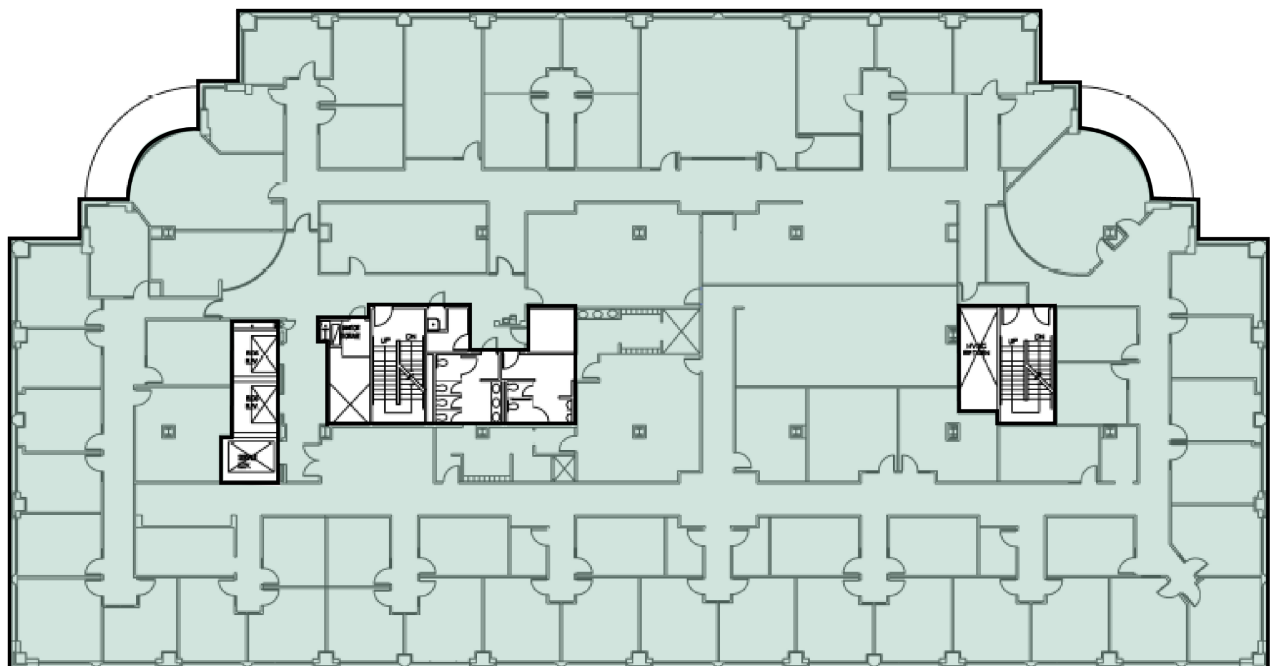
Status: Available
Condition: Gray shell with spec areas. Ready for immediate build-out



Suite 400

Rentable Square Feet: 27,934
Lease Rates: \$26.00–\$28.00/RSF

Status: Available
Condition: Prior tenant design still in place and ready for occupancy



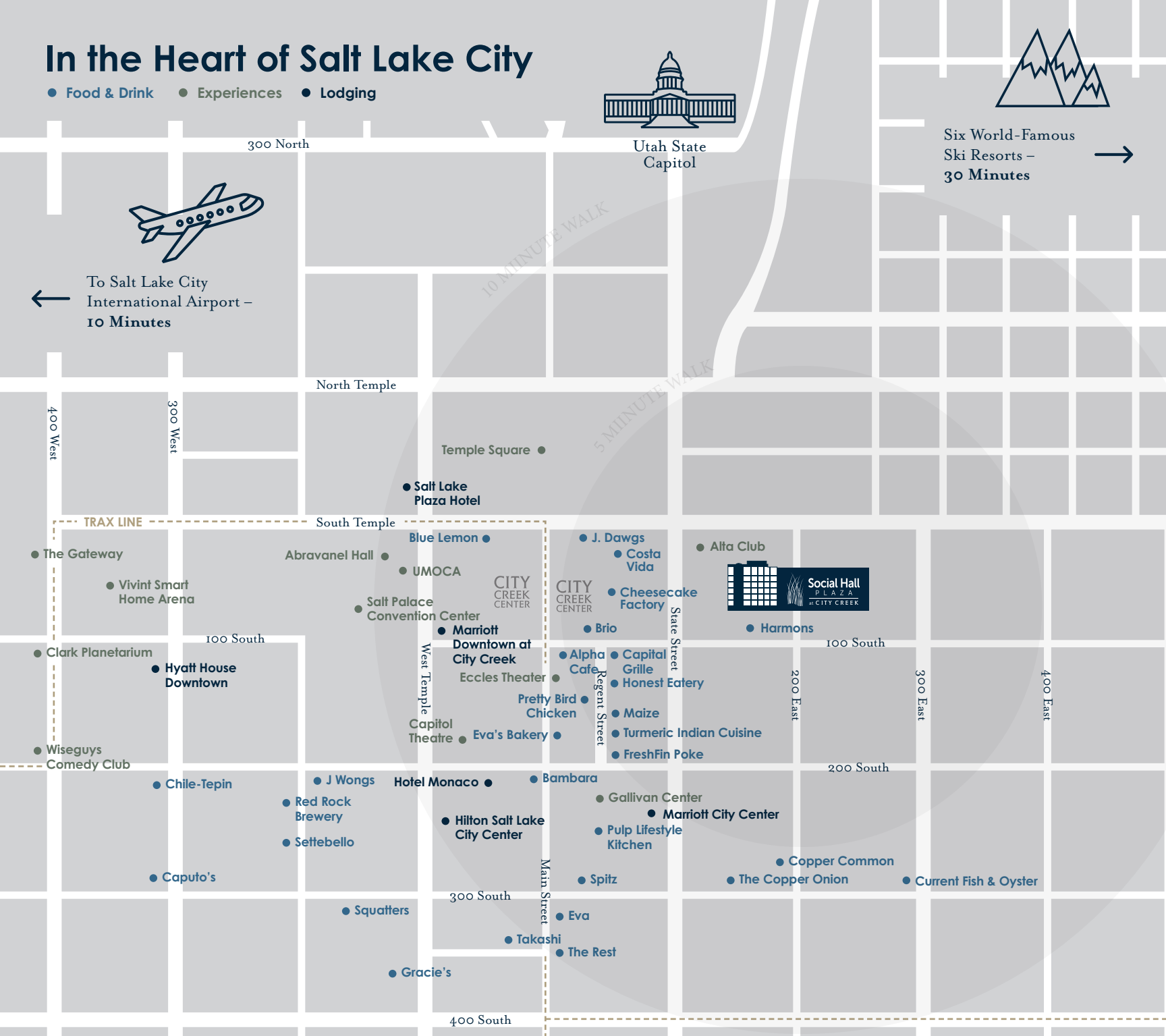
In the Heart of Salt Lake City

● Food & Drink ● Experiences ● Lodging



Six World-Famous
Ski Resorts –
30 Minutes →

← To Salt Lake City
International Airport –
10 Minutes



Contact

Jordan Johnson 801.321.8711

Jordan.Johnson@propertyreserve.org



PROPERTY
RESERVE