



SOUTHEASTERN
DEVELOPMENT • BROKERAGE • CONSULTING



Savannah River Trade Center

2917 Riverwest Drive | Augusta, GA 30907

----- **FOR LEASE!** -----

Two Spaces Available 1,745 & 3,346 SQFT

CONTACT:

Luke Coffey

706.854.6731

Luke.coffey@southeastern.company



SOUTHEASTERN
DEVELOPMENT • BROKERAGE • CONSULTING

EXECUTIVE SUMMARY



OFFERING SUMMARY

Term: 36 Months (Minimum)
Zoning: HI – Heavy Industrial

AVAILABLE SPACES

Suite 101 – 3,346 SF \$10.50/SF/MG
Suite 102 – 1,745 SF \$14.00/SF/MG

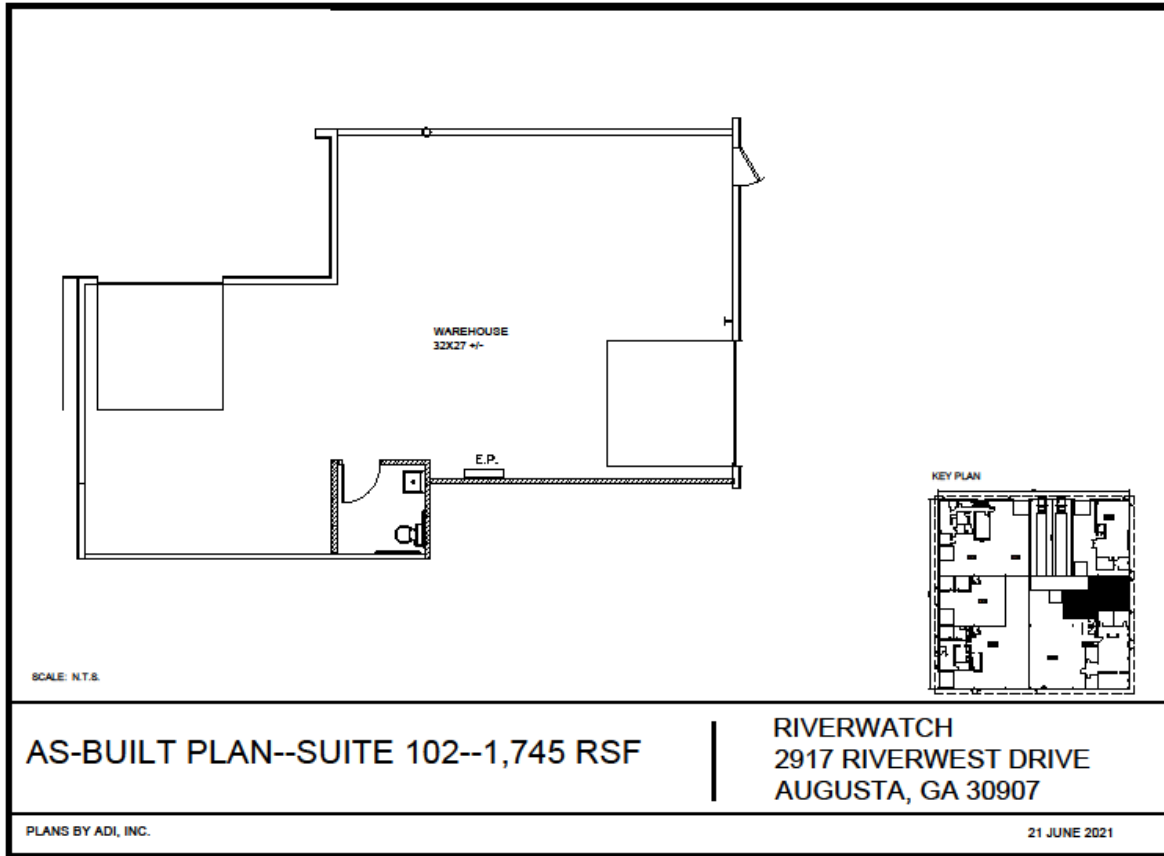
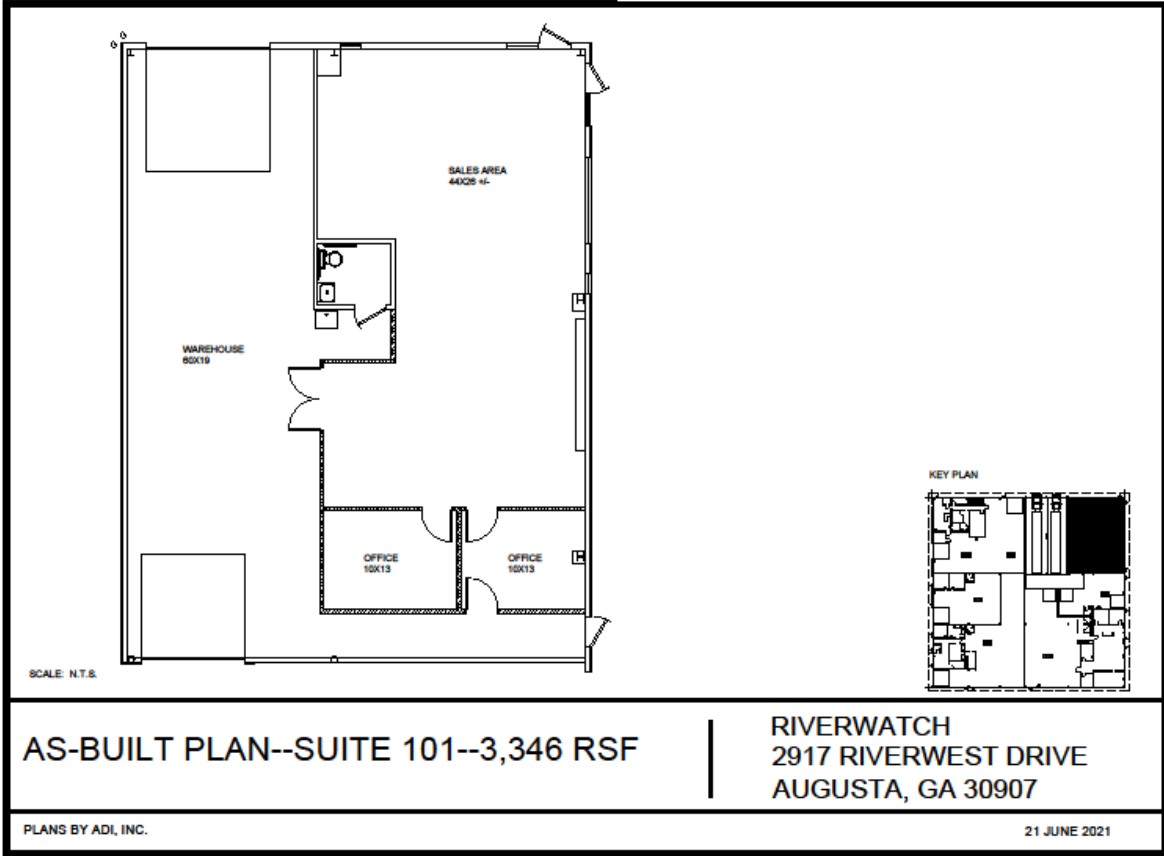
PROPERTY OVERVIEW

2917 Riverwest Drive is located conveniently $\frac{1}{4}$ mile west of the I-20 ramp at Riverwatch Parkway and minutes from downtown Augusta and Evans, GA. The building offers the flexibility to lease a smaller suite of 1,745 SF. Great location and floorplans for office/showroom, light distribution or service needs.

LOCATION OVERVIEW

DIRECTIONS: From I-20 coming from Atlanta, take exit 200 and turn onto Riverwatch Parkway. From I-20 coming from Columbia, take exit 200 and turn right onto Riverwatch Parkway.





2917 Riverwest Drive

