

Lafayette Plaza Atrium

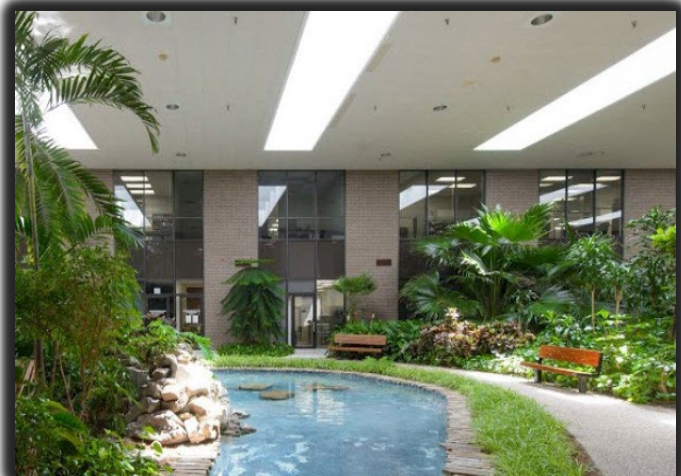
LAFAYETTE LOUISIANA



Located on the corner of Ambassador Caffery Parkway and Dover Boulevard, this 2 story full service office building consists of 104,601 square feet and is offering flexible lease terms which includes short term leases, competitive rates, tenant improvements and concessions. This property features a serene atmosphere in its large tropical atrium which includes a pond with waterfall and bench seating throughout the atrium. This property features accommodations for small and large tenants, 24 hour access, abundant parking, lighted monument signage and easy access onto Dover Boulevard with a convenient traffic light. Fiber optics available. Minutes from abundant shopping, restaurants and medical.

BUILDING HIGHLIGHTS

- ◆ Full-service leases
- ◆ Professional management team committed to service
- ◆ Beautifully landscaped atrium with interior office views
- ◆ Abundant parking
- ◆ Security system, card access
- ◆ Exterior tenant signage
- ◆ Telecommunications, data wiring, and fiber optics throughout building
- ◆ Convenient location surrounded by retail, dining, and business complexes
- ◆ Traffic light accessible

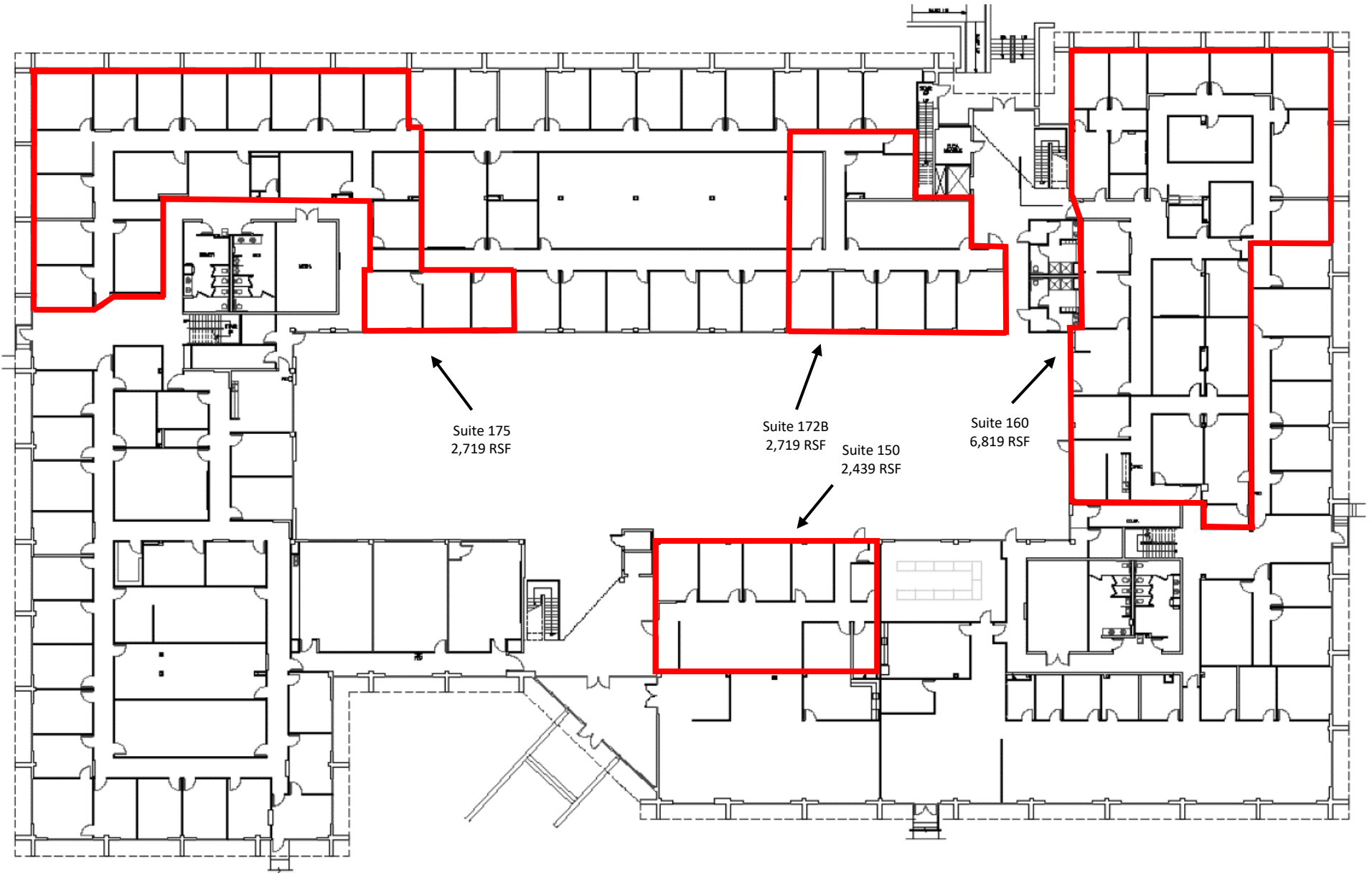


CONTACT INFORMATION

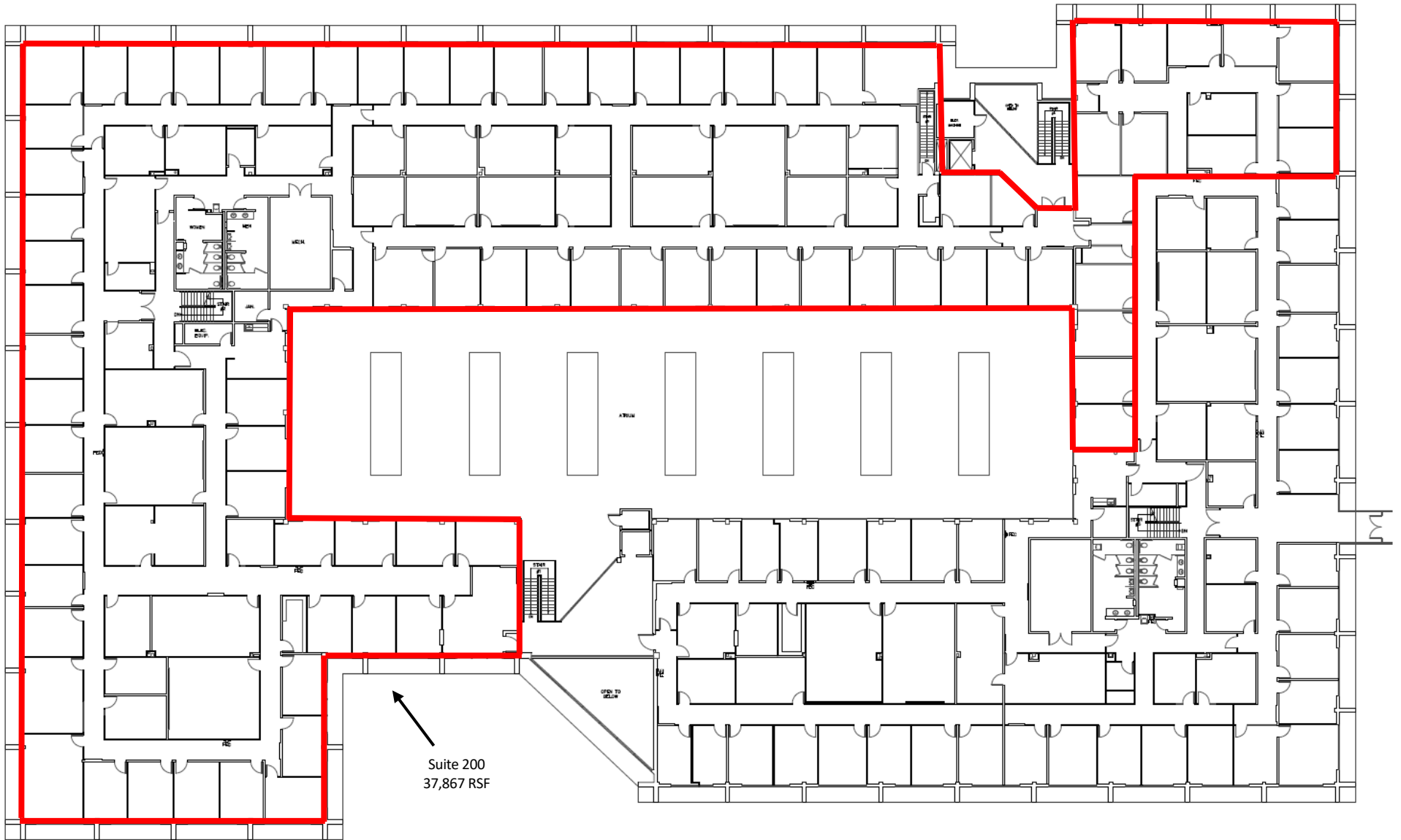
Michael L. Matherne / 337-258-6107 mobile / mmatherne@championllc.com

100 Rue Iberville, Suite 200 • Lafayette, LA 70508 • 337-593-0444 (PH) www.championllc.com

The information contained herein was obtained from sources deemed reliable; however, Champion Real Estate Services, LLC makes no guaranties, warranties or representations to the completeness or accuracy thereof. The presentation of this real estate information is subject to errors; omissions; change of price; prior sale or lease; or withdrawal without notice. *Certain terms and conditions apply to commissions offered.



LAFAYETTE PLAZA ATRIUM - FIRST FLOOR



LAFAYETTE PLAZA ATRIUM – SECOND FLOOR