

# CEDAR CITY 1.25 ACRES

FOR SALE, LEASE, OR BUILD TO SUIT



**MOUNTAIN WEST**  
COMMERCIAL REAL ESTATE

## TROY SCHEEL

tscheel@mwcre.com  
direct 435.256.8774  
[View Profile](#)

## DOUG SCHEEL

dscheel@mwcre.com  
direct 435.256.8773  
[View Profile](#)

## KELLY SHIOTANI

kshiotani@mwcre.com  
direct 801.456.8855  
[View Profile](#)

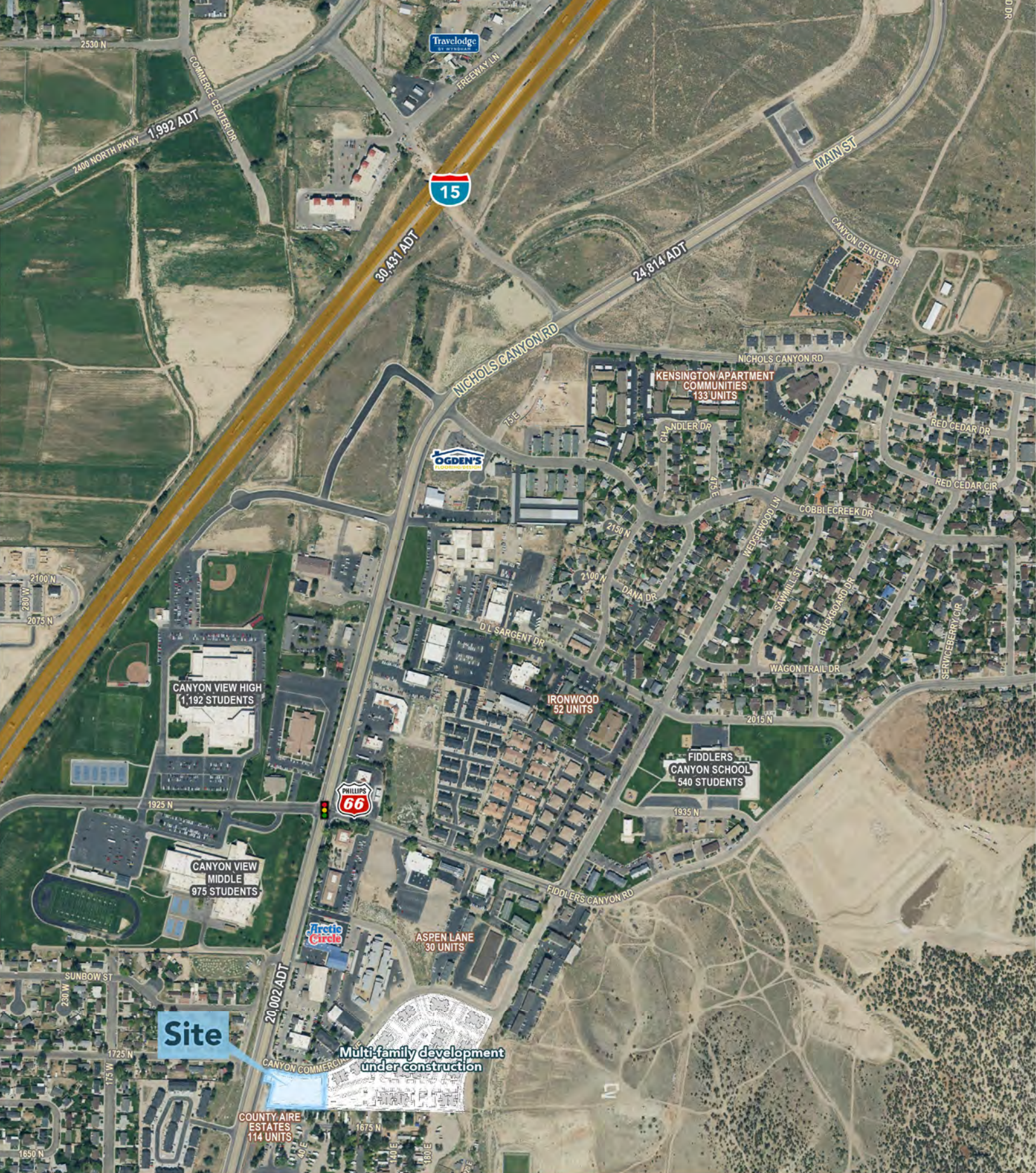
## PROPERTY DETAILS

1700 EAST CANYON COMMERCIAL AVENUE, CEDAR CITY, UT 84721

- 1.25 Acres
- Drive thrus available
- Anticipated Delivery Date Q4 2024
- Zoning - CC Central Commercial
- \$18 per SF

**FULL SERVICE  
COMMERCIAL REAL ESTATE**

312 East South Temple  
Salt Lake City, Utah 84111  
Office 801.456.8800  
[www.mtnwest.com](http://www.mtnwest.com)



**MOUNTAIN WEST**  
COMMERCIAL REAL ESTATE

**TROY SCHEEL**

tscheel@mwcre.com  
direct 435.256.8774  
[View Profile](#)

**DOUG SCHEEL**

dscheel@mwcre.com  
direct 435.256.8773  
[View Profile](#)

**KELLY SHOTANI**

kshotani@mwcre.com  
direct 801.456.8855  
[View Profile](#)

**FULL SERVICE  
COMMERCIAL REAL ESTATE**

312 East South Temple  
Salt Lake City, Utah 84111  
Office 801.456.8800  
[www.mtnwest.com](http://www.mtnwest.com)