

# NEW DEVELOPMENT

21725 PONTIAC TRAIL, SOUTH LYON, MI 48377

1,400 - 3,100 SF AVAILABLE

FOR LEASE



**MATTHEW BERKE**

248.406.7111  
mberke@keystonecres.com

**KATHLEEN SIMOS**

248.406.1761  
ksimos@keystonecres.com



# 21725 PONTIAC TRAIL

21725 PONTIAC TRAIL, SOUTH LYON, MI 48377

## PROPERTY DESCRIPTION



## PROPERTY DESCRIPTION

New development! Drive-thru available and good visibility!

## LOCATION DESCRIPTION

New development! Drive-thru available and good visibility!

**MATTHEW BERKE**

248.406.7111  
mberke@keystonecres.com

**KATHLEEN SIMOS**

248.406.1761  
ksimos@keystonecres.com

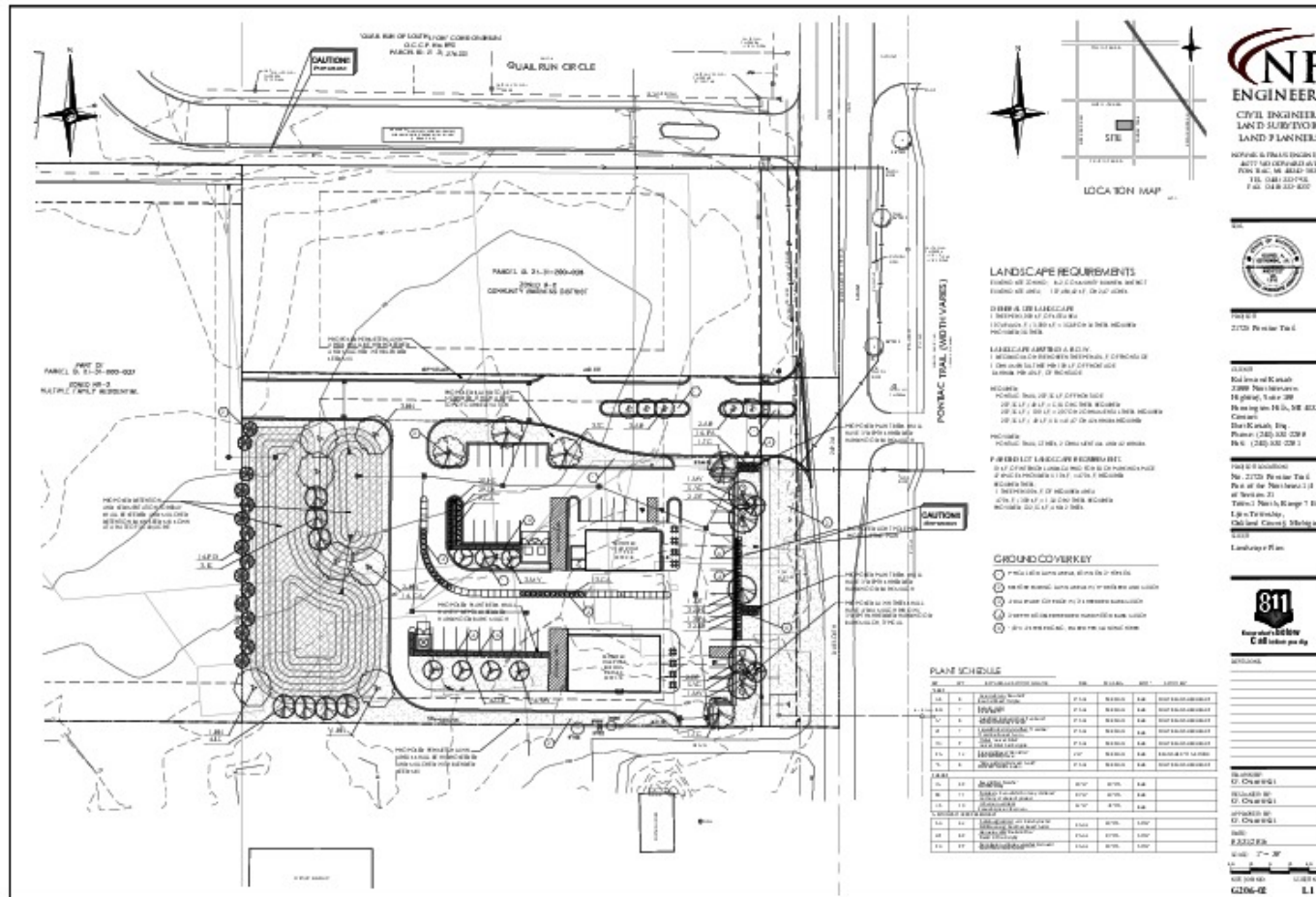




# 21725 PONTIAC TRAIL

21725 PONTIAC TRAIL, SOUTH LYON, MI 48377

## SITE PLAN



MATTHEW BERKE

248.406.7111  
mberke@keystonecres.com

KATHLEEN SIMOS

248.406.1761  
ksimos@keystonecres.com





# 21725 PONTIAC TRAIL

21725 PONTIAC TRAIL, SOUTH LYON, MI 48377

TRADE AERIAL



Map data ©2024 Imagery ©2024 CNES / Airbus, Maxar Technologies, U.S. Geological Survey, USDA/FPAC/GEO

**MATTHEW BERKE**

248.406.7111  
mberke@keystonecres.com

**KATHLEEN SIMOS**

248.406.1761  
ksimos@keystonecres.com



# 21725 PONTIAC TRAIL

21725 PONTIAC TRAIL, SOUTH LYON, MI 48377

## DEMOGRAPHICS

POPULATION	1 MILE	3 MILES	5 MILES
Total Population	4,301	27,773	51,646
Average age	39	41	41
Average age (Male)	39	40	40
Average age (Female)	40	42	42

HOUSEHOLDS & INCOME	1 MILE	3 MILES	5 MILES
Total households	1,693	10,706	19,533
# of persons per HH	2.5	2.6	2.6
Average HH income	\$136,721	\$153,988	\$156,634
Average house value	\$378,122	\$390,094	\$430,184

ETHNICITY (%)	1 MILE	3 MILES	5 MILES
Hispanic	3.1%	3.5%	3.6%

RACE	1 MILE	3 MILES	5 MILES
Total Population - White	3,816	24,268	44,331
Total Population - Black	59	512	828
Total Population - Asian	112	752	2,036
Total Population - Hawaiian	0	0	0
Total Population - American Indian	1	33	54
Total Population - Other	41	161	355

\* Demographic data derived from 2020 ACS - US Census

**MATTHEW BERKE**

248.406.7111  
mberke@keystonecres.com

**KATHLEEN SIMOS**

248.406.1761  
ksimos@keystonecres.com



# 21725 PONTIAC TRAIL

21725 PONTIAC TRAIL, SOUTH LYON, MI 48377

## BROKERS



**MATTHEW BERKE**

Principal

248.406.7111

mberke@keystonecres.com



**KATHLEEN SIMOS**

Senior Advisor

248.406.1761

ksimos@keystonecres.com

**MATTHEW BERKE**

248.406.7111

mberke@keystonecres.com

**KATHLEEN SIMOS**

248.406.1761

ksimos@keystonecres.com

