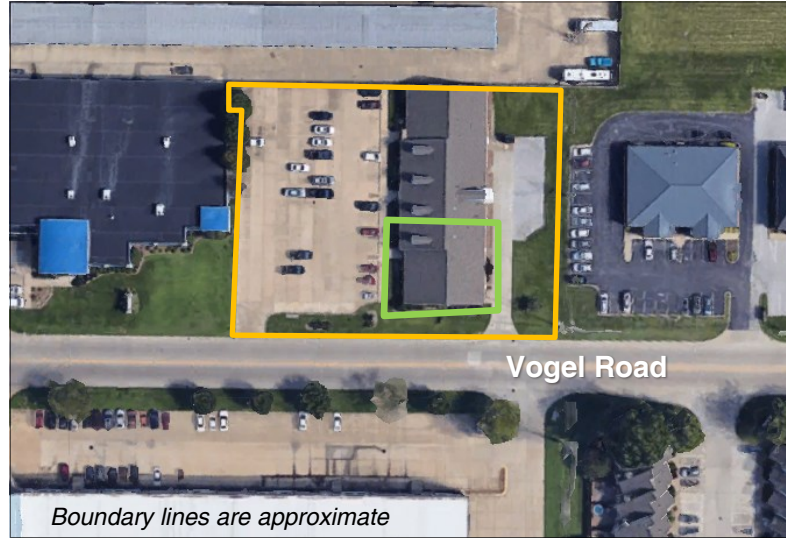




F.C. Tucker Commercial

AVAILABLE

5130 Vogel Road EVANSVILLE, IN 47715



- **Lease Price:** \$15 / SF + 38% of Total Utilities
- **Available SF:** 4,464 SF
 - Unit A: 1,757 SF
 - Unit B: 2,707 SF
- **Year Built:** 1986
- **Zoning:** C-4
- **Ceiling Height:** 9' - 10'
- **Roof:** Shingle - 2012 with Warranty
- **Floor:** Carpet/Tile

- **# of Restrooms:** 4
- **Water/Sewer:** City
- **# of Parking Spaces:** 56 Shared
- **Ext. Construction:** Brick
- **Current Use:** Multi-Tenant Office
- **Showing:** Contact Listing Agent
24 Hour Notice
- **Location:** Between Green River Rd and Burkhardt Rd on north side of Vogel

Multi-Purpose office space on Evansville's Eastside. The space has been opened up and features multiple offices, large open areas for cubicles or other work spaces, a kitchen area and 4 bathrooms. The space could be split into 2 smaller office areas if necessary. There is ample shared parking and a small fenced area behind the building available for an outdoor space.

For More Information, Contact:

Kyle Bernhardt

Direct: 812.455.7577

Office: 812.473.6677

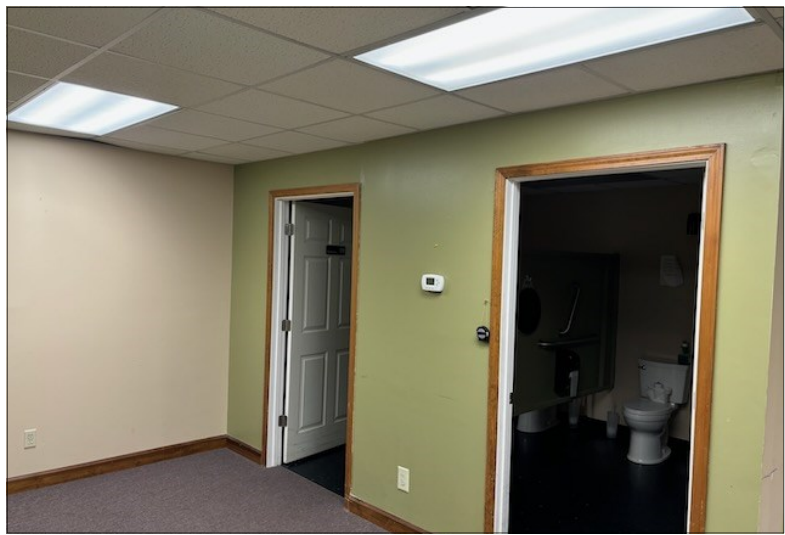
kylebernhardt@fctuckercommercial.com



7820 Eagle Crest Blvd. Suite 200
 Evansville, IN • 47715
 812-473-6677 • Fax: 812-473-6684



FCTuckerCommercial.com



For More Information, Contact:

Kyle Bernhardt

Direct: 812.455.7577

Office: 812.473.6677

kylebernhardt@fctuckercommercial.com



7820 Eagle Crest Blvd. Suite 200

Evansville, IN • 47715

812-473-6677 • Fax: 812-473-6684



FCTuckerCommercial.com

The information contained herein was obtained from sources we consider reliable. We cannot be responsible, however, for errors, omissions, prior sale, and withdrawal from the market or change in price.



For More Information, Contact:

Kyle Bernhardt

Direct: 812.455.7577

Office: 812.473.6677

kylebernhardt@fctuckercommercial.com



7820 Eagle Crest Blvd. Suite 200

Evansville, IN • 47715

812-473-6677 • Fax: 812-473-6684



FCTuckerCommercial.com

The information contained herein was obtained from sources we consider reliable. We cannot be responsible, however, for errors, omissions, prior sale, and withdrawal from the market or change in price.



**F.C. Tucker
Commercial**

AVAILABLE

5130 Vogel Road
EVANSVILLE, IN 47715



For More Information, Contact:

Kyle Bernhardt

Direct: 812.455.7577

Office: 812.473.6677

kylebernhardt@fctuckercommercial.com



7820 Eagle Crest Blvd. Suite 200

Evansville, IN • 47715

812-473-6677 • Fax: 812-473-6684



FCTuckerCommercial.com

The information contained herein was obtained from sources we consider reliable. We cannot be responsible, however, for errors, omissions, prior sale, and withdrawal from the market or change in price.