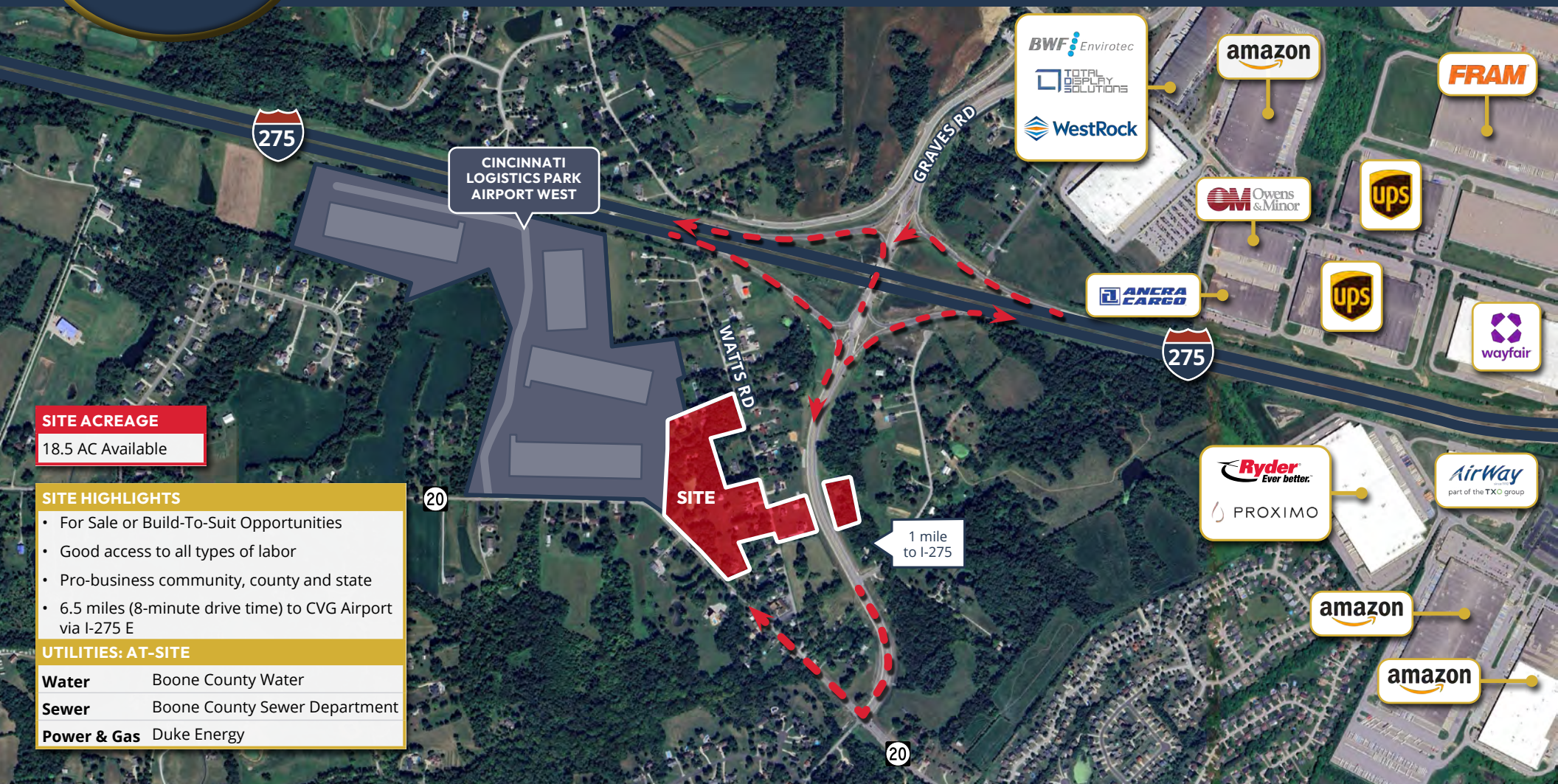


PRICE SUBJECT  
TO OFFER

## GRAVES ROAD BUSINESS PARK DEVELOPMENT

PETERSBURG RD, HEBRON, KY 41048

UP TO 18.5 ACRES AVAILABLE



### SITE ACREAGE

18.5 AC Available

### SITE HIGHLIGHTS

- For Sale or Build-To-Suit Opportunities
- Good access to all types of labor
- Pro-business community, county and state
- 6.5 miles (8-minute drive time) to CVG Airport via I-275 E

### UTILITIES: AT-SITE

Water	Boone County Water
Sewer	Boone County Sewer Department
Power & Gas	Duke Energy