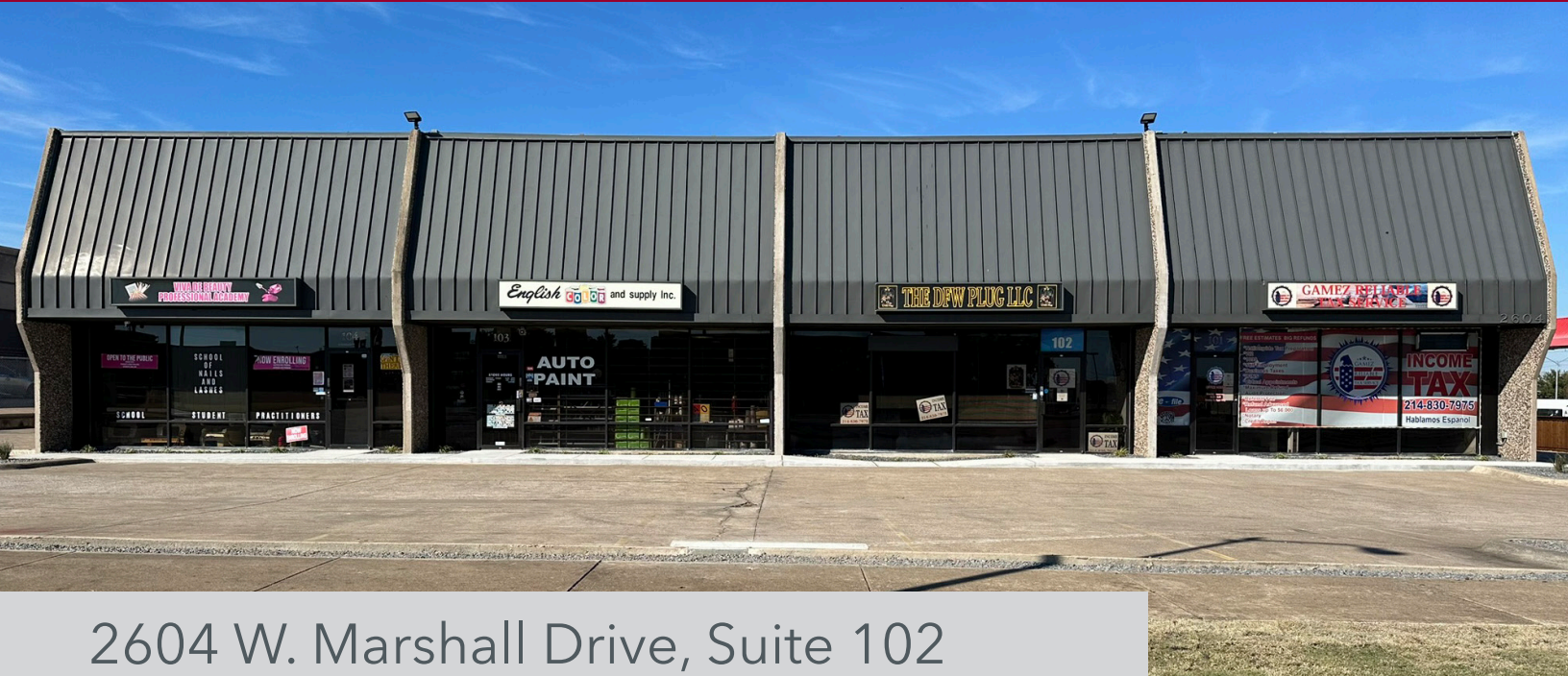


FOR LEASE

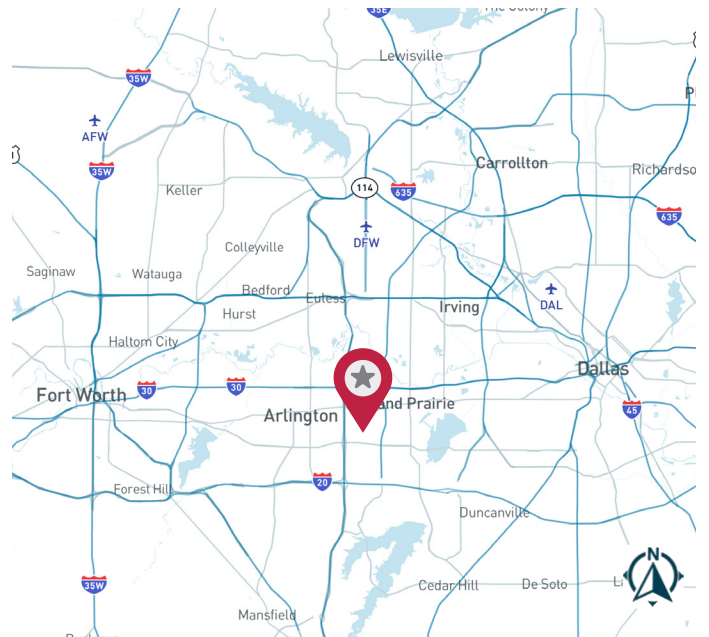
2604 W. Marshall Drive, Suite 102 | Grand Prairie, TX 75051



2604 W. Marshall Drive, Suite 102
2,847 SF

AVAILABILITY HIGHLIGHTS

- 779 SF First Floor Office Space
- 1,301 SF Warehouse
- 767 SF Mezzanine Office
- 16' Clear Height
- One (1) - 16' x 14' Grade Level Door
- Shared Parking on all Sides of the Building
- Easy Access to I-30, SH 360 and SH 161



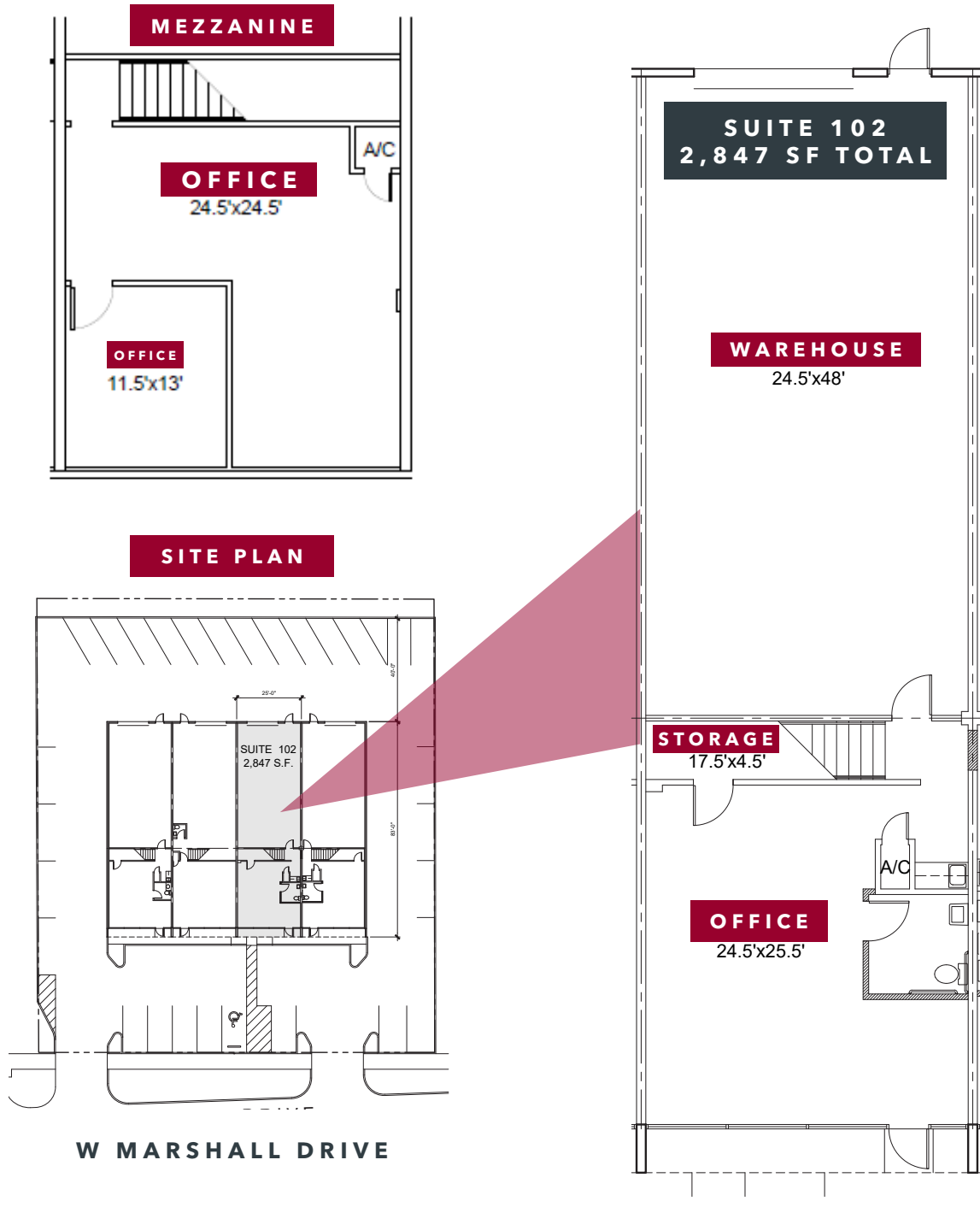
FOR MORE INFORMATION:

Reed A. Parker, SIOR
Principal

rparker@lee-associates.com
214.558.5558

LEE & ASSOCIATES
COMMERCIAL REAL ESTATE SERVICES
leadallas.com

SITE PLAN



All information furnished regarding property for sale, rental or financing is from sources deemed reliable, but no warranty or representation is made to the accuracy thereof and same is submitted to errors, omissions, change of price, rental or other conditions prior to sale, lease or financing or withdrawal without notice. No liability of any kind is to be imposed on the broker herein.

FOR MORE INFORMATION:

Reed A. Parker, SIOR
Principal
rparker@lee-associates.com
214.558.5558

2024 EXTERIOR BUILDING IMPROVEMENTS

- Electrical Repairs/Improvements
- New LED Exterior Lighting
- Roof Repairs
- Tilt-Wall Panel Re-Caulking, Concrete Tilt-Wall Panel Repairs, Window Waterproofing, etc.
- New Front Sidewalk, New Concrete In Rear Of Building
- New Wheels Stops
- New Landscaping
- New Fence
- Parking Lot Re-Striping

BRAND NEW MAKE-READY | SUITE 102 (INCLUDED IN QUOTED RENTAL RATE)

- New LVT Flooring
- HVAC Repairs
- New LVT on Stairs
- New HVAC Supply Grates
- Second Look Ceiling Tiles
- New HVAC Return Grates
- Paint Ceiling Grid
- New White Switches & Plugs
- LED Lighting On Motion
- Service/Repair Overhead Door
- Whitebox Warehouse Walls
- Repair Roof Deck Insulation
- New Texture, Paint & Base
- New Upper and Lower Cabinetry
- New Restroom Fixtures
- Good Working Order



FOR MORE INFORMATION:

Reed A. Parker, SIOR
Principal

r.parker@lee-associates.com
214.558.5558



For more information please contact:



REED A. PARKER, SIOR

rparker@lee-associates.com

214.558.5558