



335,000 SF

Cold storage for lease



Treasure Coast Cold Logistics

2300 N Old Dixie Highway
Fort Pierce, FL 34946

Location

- Less than 6 miles to I-95
- High visibility to Old Dixie Highway

Advantages and amenities

- Situated on 20.9 acres
- Class A new construction
- IL Zoning
- Located between US 1 and Old Dixie Highway

Property Specifications

- 335,000 SF +/- available
- 250,000 SF +/- freezer/cooler convertible storage
- Two office welfare 10,000 SF +/- per (20,000)
- Cold truck dock 50,000 SF +/- 35°F
- Battery charging & 11,000 SF +/-
- Fire riser huts 1,000 SF +/-
- Fire pump bld. 1,600 SF +/-
- 65' dock apron
- 150' truck maneuvering
- 150 truck spaces
- 150 auto parking spaces
- 50' clear height in cooler/freezer
- 30' clear height in dock
- LED throughout
- Rytec doors
- Empty pallet storage above dock doors
- Pallet count 56,000 (+/- 2 deep 7 high)
- Dock doors 33 +/-
- Quell fire protection system

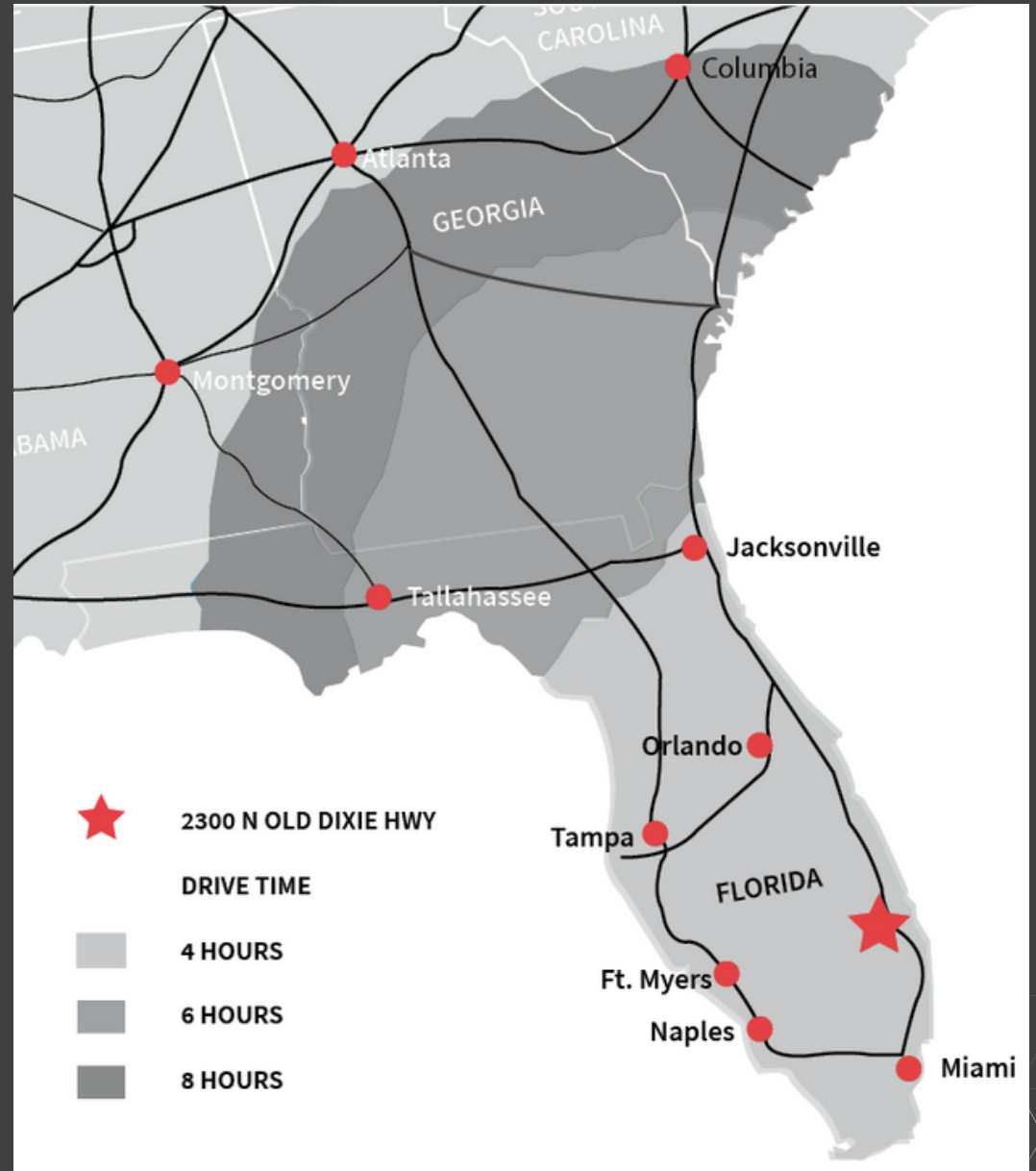
335,000 SF

Cold storage for lease



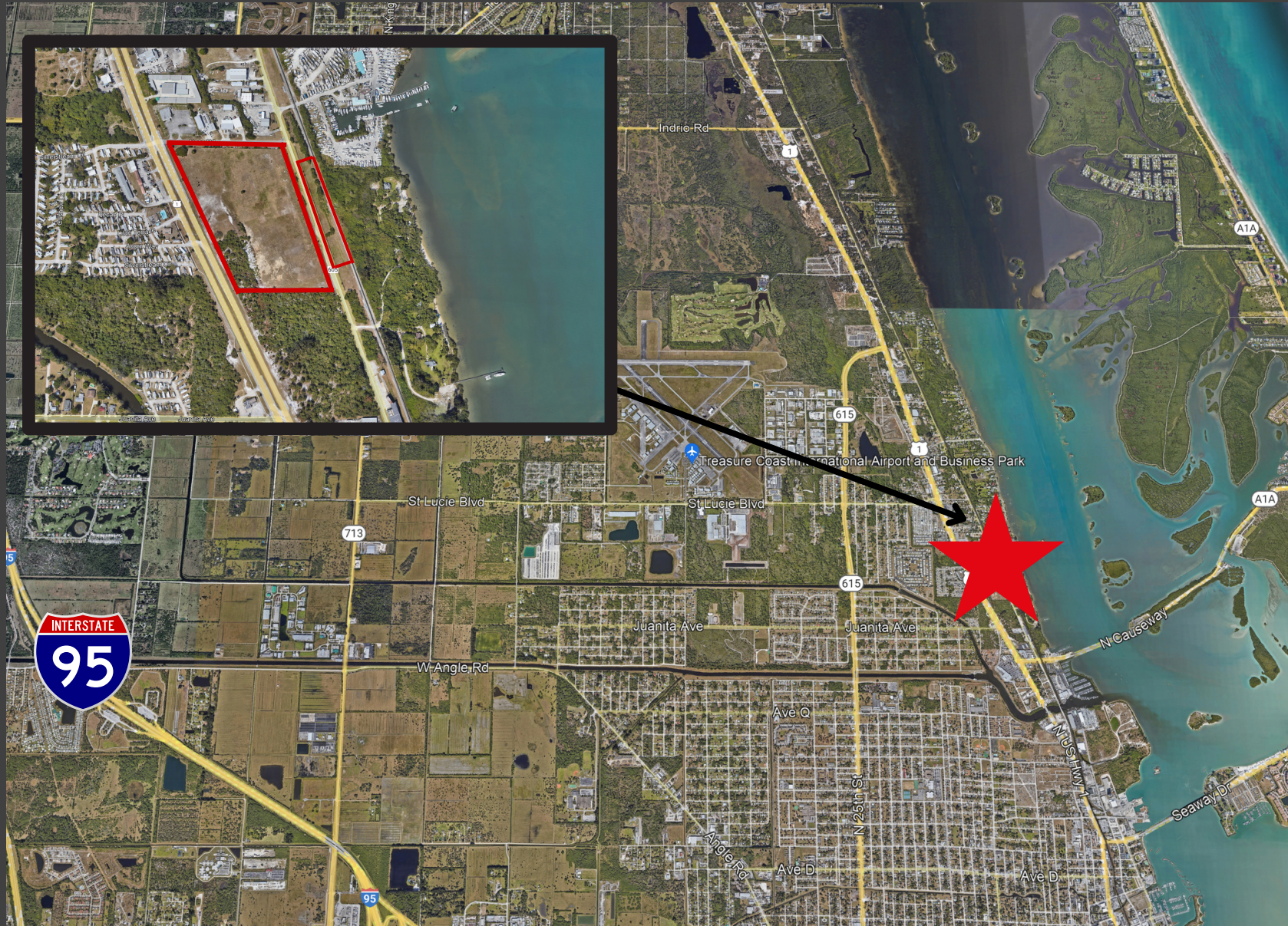
Distance to intermodal facilities

Terminal	Miles	Terminal	Miles
FEC - Ft. Pierce	3.1 miles	FEC - Titusville	88 miles
FEC - West Palm Beach	64 miles	CSX - Winter Haven	98 miles
FEC - Ft. Lauderdale	114 miles	CSX - 62nd Street	149 miles
FEC - Miami	128 miles	FEC - Jacksonville	218 miles
CSX - Miami	131 miles	NS - Edgewood Drive	236 miles
NS - Miami	131 miles	CSX - Sportsman	236 miles



335,000 SF

Cold storage for lease



335,000 SF

Cold storage for lease



Proposed Site Plan



Sky Groden

Executive Managing Director
954.817.0188
sky.groden@jll.com

Kevin Griffiths

Senior Vice President
610.955.7502
kevin.griffiths@jll.com

Although information has been obtained from sources deemed reliable, neither Owner nor JLL makes any guarantees, warranties or representations, express or implied, as to the completeness or accuracy as to the information contained herein. Any projections, opinions, assumptions or estimates used are for example only. There may be differences between projected and actual results, and those differences may be material. The Property may be withdrawn without notice. Neither Owner nor JLL accepts any liability for any loss or damage suffered by any party resulting from reliance on this information. If the recipient of this information has signed a confidentiality agreement regarding this matter, this information is subject to the terms of that agreement. © 2023 Jones Lang LaSalle IP, Inc. All rights reserved.