



WYNWOOD PORTFOLIO

BLANCA

GOLDMAN PROPERTIES

CONTENTS

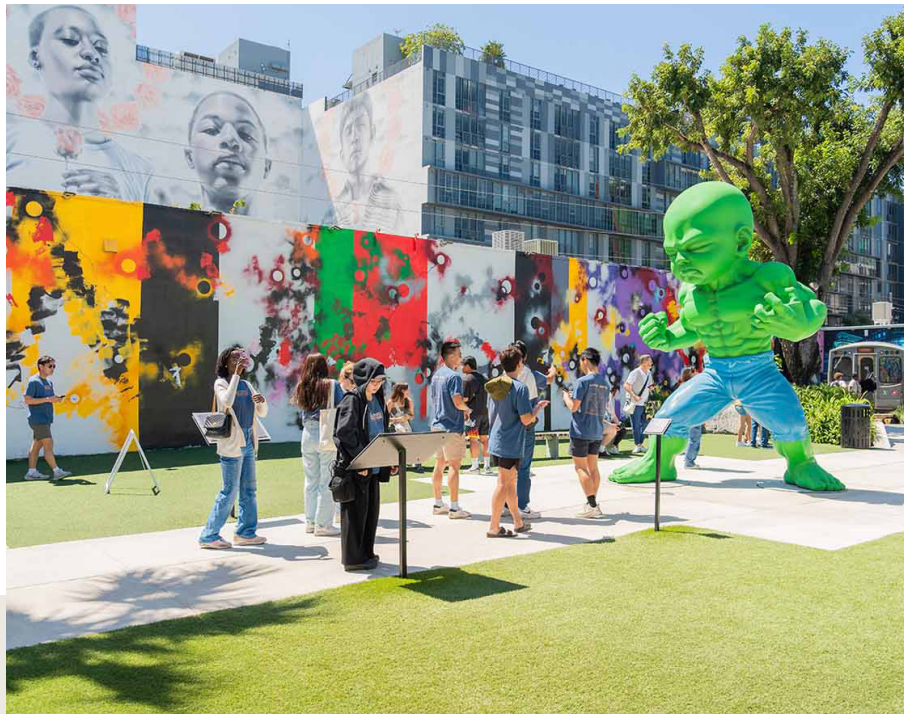
Evolution of Wynwood	3
Wynwood by the numbers	4
Location map and drive times	5
Wynwood amenities	6
The LAB Miami	7
Parking at the Wynwood Garage	8
Wynwood in the press	9
Our Wynwood tenants	10
Availabilities	11
Leasing contacts	19




EVOLUTION OF WYNWOOD

From 2004 to 2006, **Goldman Properties**, led by Tony Goldman, acquired more than 25 properties in the central warehouse district of Wynwood in Midtown Miami. At the time, it was a low-density warehouse district with a wonderful emerging arts community. Tony recognized its great potential for an exciting, natural evolution and oversaw a master plan to create an artistically driven, tasteful and architecturally dynamic pedestrian community.

Ignited by the launch of Wynwood Walls, Wynwood Kitchen and Bar, and Joey's Restaurant, the thriving community of Wynwood boasts numerous shops, restaurants and bars, and countless walls painted by artists from across the globe. Since its inception, Wynwood has grown exponentially and welcomes millions of visitors each year.



LOCATION



WYNWOOD BY THE NUMBERS

1.7M SF

CURRENT OFFICE

1.4M SF

CURRENT RETAIL

1.2M SF

OFFICE PROPOSED & UNDER
CONSTRUCTION

480K SF

RETAIL PROPOSED & UNDER
CONSTRUCTION

5,761 UNITS

APARTMENTS EXISTING

400+

BUSINESSES

4,900 UNITS

APARTMENTS PROPOSED
& UNDER CONSTRUCTION

15M+

ANNUAL VISITORS

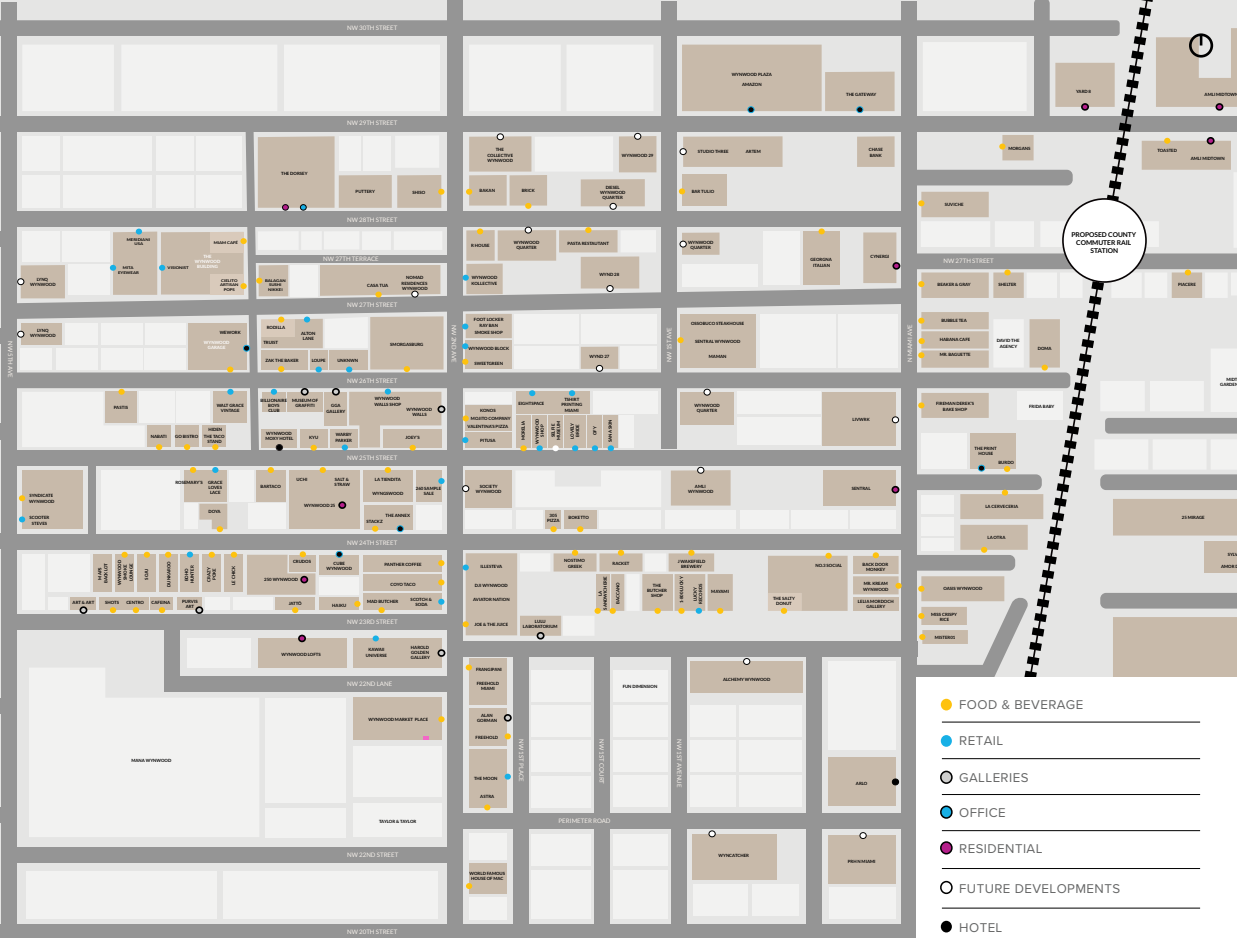
*Information based off of Wynwood-Design District Submarket

LOCATION MAP & DRIVE TIMES

Wynwood's prime location places it at the heart of Miami, just minutes from Downtown, Brickell, and other key neighborhoods, with seamless access to major highways—making it one of the city's most sought-after office destinations.



2001/2002

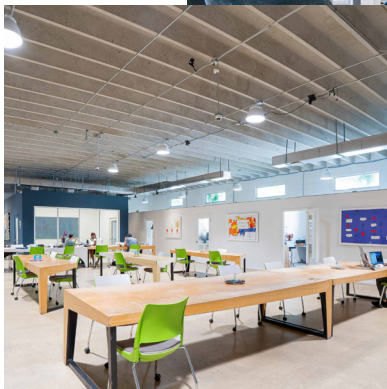


THE LAB MIAMI

Originally founded as one of Miami's first coworking spaces, The LAB emerged as a hub for entrepreneurs, creatives, and innovators inspired by the city's potential as a future innovation center. Rooted in the visionary spirit of **Goldman Properties**, the pioneering force behind Wynwood's transformation, The LAB continues to connect Miami's growing tech community.

*AS PART OF GOLDMAN'S PORTFOLIO, TENANTS CAN ENJOY ACCESS TO THE LAB'S COWORKING, CONFERENCE, AND EVENT SPACES, FOSTERING COLLABORATION AND COMMUNITY ENGAGEMENT.

*SUBJECT TO ADDITIONAL FEES



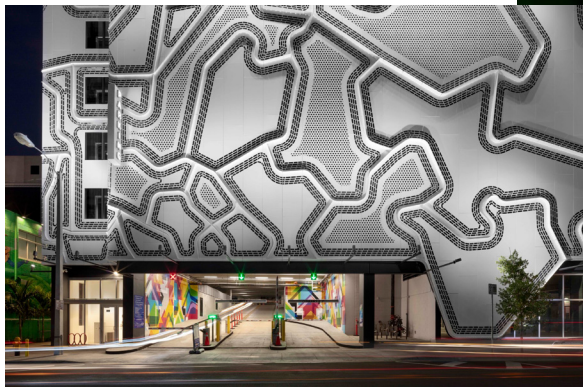
THE LAB MIAMI

PARKING AT THE WYNWOOD GARAGE

Goldman Properties Owned

Over 400 Parking Spaces

Within 1 Block of Available Units



PARKING

WYNWOOD IN THE PRESS

"In Miami, Wynwood Walls and Street Art Continue to Evolve"
THE NEW YORK TIMES

"Miami's colorful arts district still has a lot to offer, including hidden gems and quirky old favorites"
TIME OUT

"One Place to Visit in Miami: Wynwood, the city's colorful, cultural hotspot"
NORTHEASTERN GLOBAL NEWS

"Wynwood's street art paints a pretty picture in Florida"
THE GUARDIAN



GOLDMAN PROPERTIES' WYNWOOD TENANTS

*NOT AN EXHAUSTIVE LIST



LUXURY BRAND PARTNERS



YANN COUVREUR
PÂTISSERIE
PARIS



CHOEFF LEVY FISCHMAN

Steelcase



MEJURI



THE LAB MIAMI

WILHELMINA

wework

BARRY'S

MKDA



WARBY PARKER





**WYNWOOD
BUILDING ANNEX**
444-448 NW 28TH STREET

WYNWOOD BUILDING
2750 NW 3RD AVENUE

NE 29TH STREET

WYNWOOD HOUSE
331 NW 26TH STREET

TWO BUILDINGS
401, 405 & 425 NW 26TH STREET



WYNWOOD GARAGE
AMPLE PARKING JUST A FEW STEPS AWAY



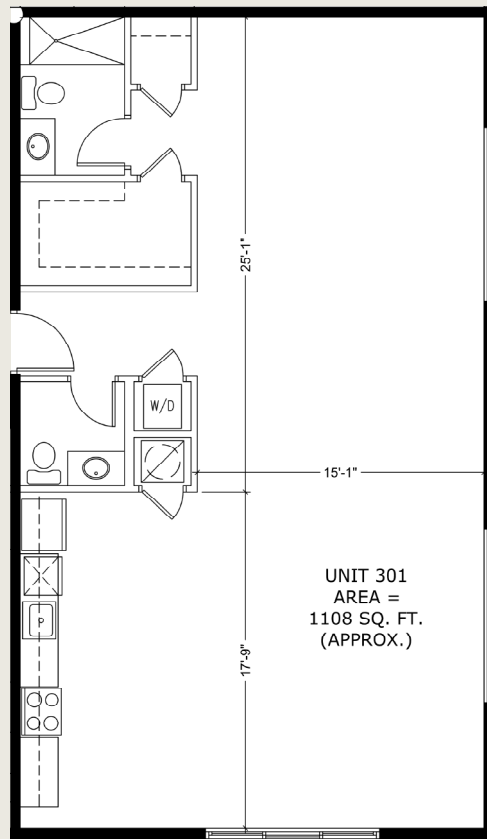
NW 20TH STREET

WYNWOOD HOUSE

331 NW 26TH STREET

Suite 301

1,108 SF — available immediately



WYNWOOD BUILDING ANNEX

444-448 NW 28TH STREET

Suite 448

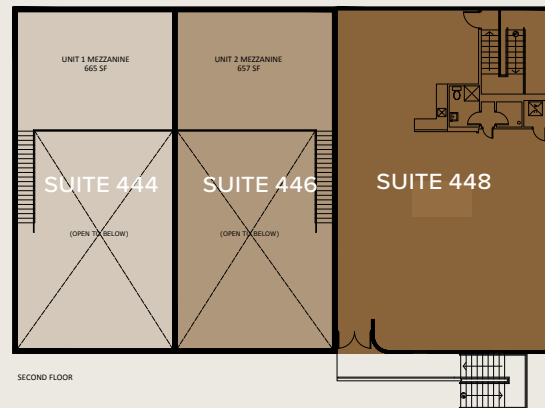
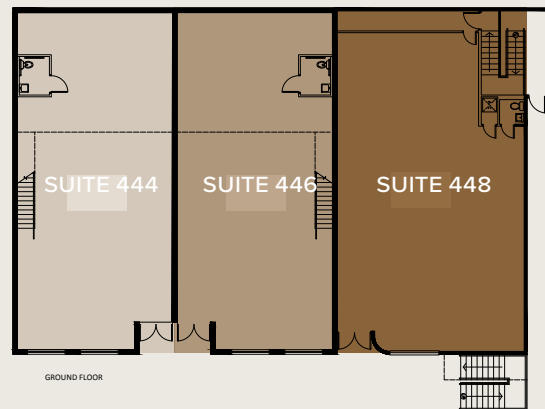
1,915 SF – available immediately

Suite 446

2,487 SF – available in 1 month

Suite 444

2,487 SF – available in 1 month



TWO BUILDINGS

401, 405 AND 425 NW 26TH STREET

Suite 401

2,175 SF – available immediately

Suite 405 (Future Spec Suite)

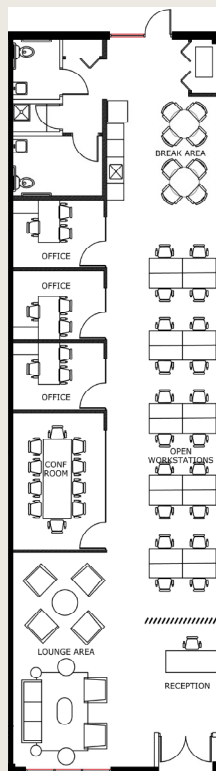
2,175 SF – available in 3 months

Suite 425

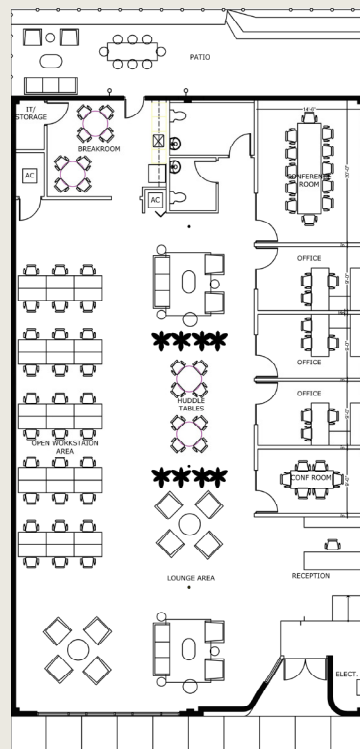
4,350 SF – available immediately



Suite 401



Suite 425

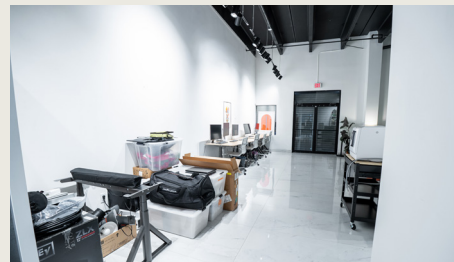
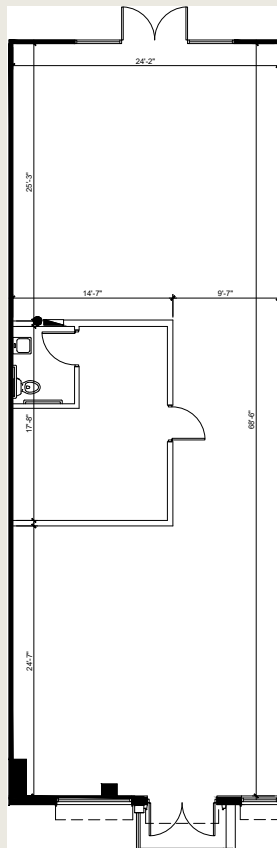


WYNWOOD BUILDING

2750 NW 3RD AVENUE

Suite 22

1,650 SF – available immediately



WYNWOOD BUILDING

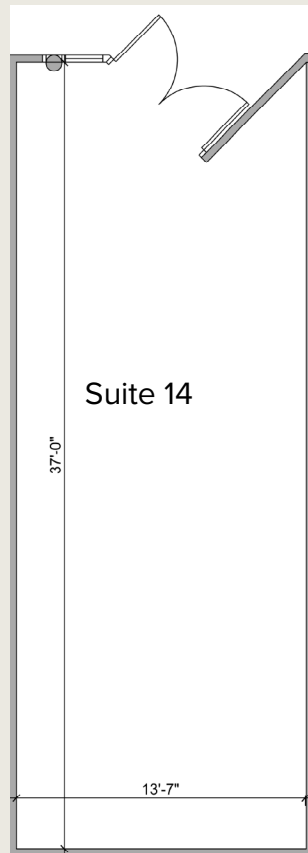
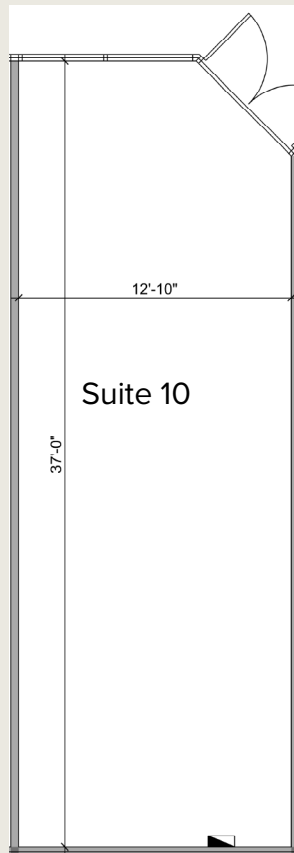
2750 NW 3RD AVENUE

Suite 10

484 SF – available immediately

Suite 14

500 SF – available immediately



WYNWOOD BUILDING

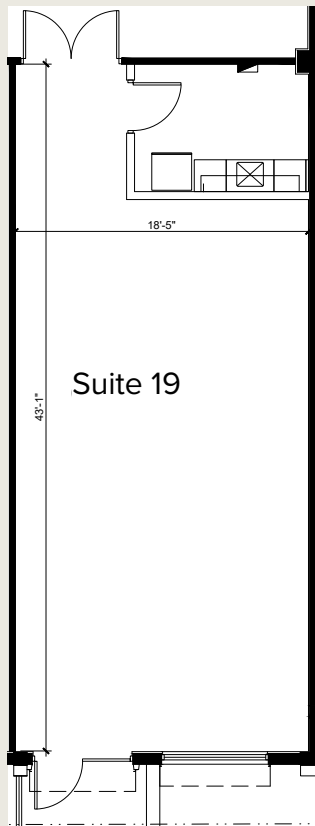
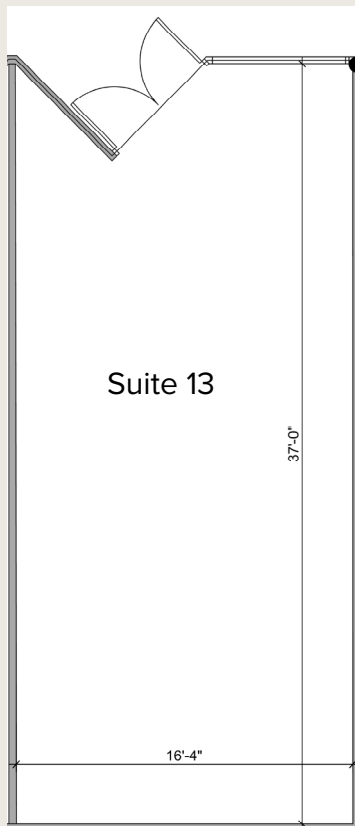
2750 NW 3RD AVENUE

Suite 13

600 SF – available in 1 month

Suite 19

793 SF – available immediately



LEASING CONTACTS

Nicole Kaiser

305 913 0772

nicole.kaiser@blancacre.com

Juan Ruiz

305 577 0251

juan.ruiz@blancacre.com



BLANCA COMMERCIAL REAL ESTATE, INC.
LICENSED REAL ESTATE BROKER
BLANCACRE.COM

No warranty of representation, expressed or implied, is made as to the accuracy of the information contained herein, and same is submitted subject to errors, omissions, change of price rental or other conditions, withdrawal without notice, and to any special conditions imposed by our clients.

