

6500 HOLLISTER AVE.

GOLETA
CALIFORNIA
93117

SUBLEASE

Sleek 2nd Floor Creative/Office
Space Located in Goleta's booming
engineering & tech corridor

SUITE 210 · ±16,867 SF
SUITE 220 · ±12,505 SF
TOGETHER ±29,372 SF

Fast access to US 101 Freeway
& Santa Barbara Airport

Bonus amenities include common gym
w/ showers plus game room, kitchen

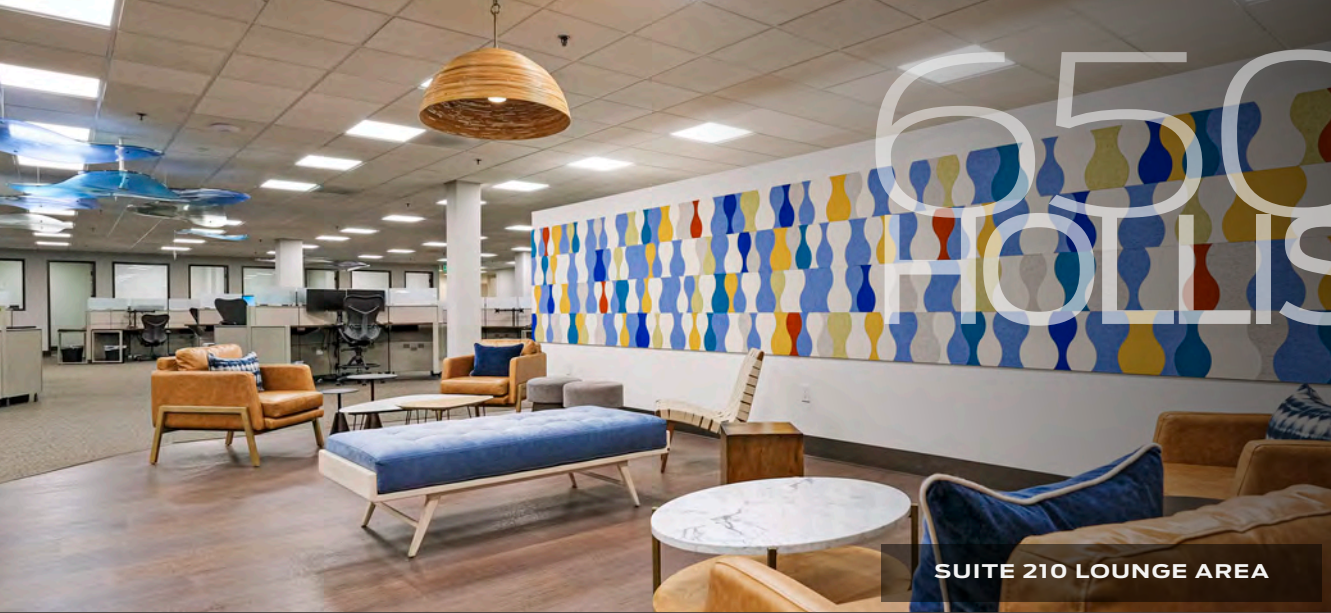
SUITE 210 SOUND ABATEMENT

PRESENTED BY

GENE DEERING
805.879.9623
gdeering@radiusgroup.com

CA LIC. 01450943





SUITE 210 LOUNGE AREA

6500 HOLLISTER AVE.

GOLETA
CALIFORNIA
93117

Well equipped creative suites available separately or together, based in one of the South Coast's premier commercial properties at the heart of Goleta's tech and engineering corridor. Includes full access to a common gym with showers, spacious common kitchen and common outdoor dining area. Bonus storage area (±338 SF) also available. Quick access to US 101 Freeway, Santa Barbara Airport & UCSB campus.

Sublease Rate
\$1.30/SF NNN (\$0.90)

2nd Floor Space Sizes
SUITE 210 · ±16,867 SF
SUITE 220 · ±12,505 SF
TOTAL · ±29,372 SF

Available
Immediately

Term
Through 6/30/2027

Parking
2.9/1,000

HVAC
VAV system

Restrooms
Private set

Zoning
M-RP

Bonus Highlights
Furniture potentially available.
Common gym w/showers, game room.
Common areas recently updated.
Private & common kitchen.
Elevator served.



The information provided here has been obtained from the owner of the property or from other sources deemed reliable. We have no reason to doubt its accuracy, but we do not guarantee it.

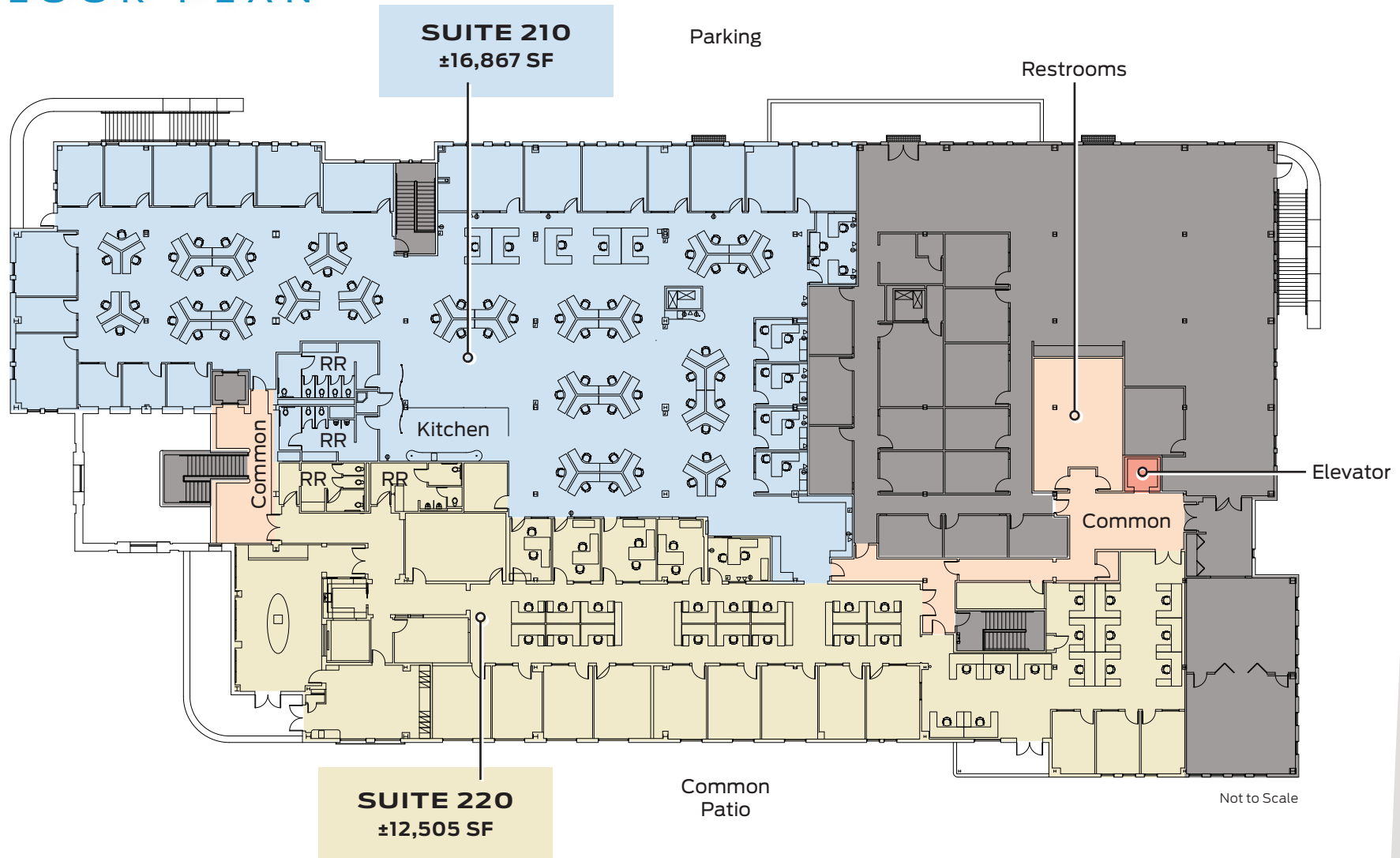
PRESENTED BY

GENE DEERING
805.879.9623
gdeering@radiusgroup.com
CA LIC. 01450943



Class A Creative/Office Space Positioned in the South Coast's Robust Engineering & Tech Corridor

FLOOR PLAN



HOLLISTER AVENUE

LOS CARNEROS WAY

PRESENTED BY

GENE DEERING
805.879.9623
gdeering@radiusgroup.com
CA LIC. 01450943



6500 HOLLISTER AVE.

GOLETA CALIFORNIA 93117

SUBLEASE

Class A Creative/Office Space Positioned in the South Coast's Robust Engineering & Tech Corridor



SUITE 210 CONFERENCE RM



SUITE 210 KITCHENETTE



SUITE 220 CONFERENCE RM



SUITE 220 PRIVATE OFFICE



SUITE 220 MEETING ROOM



SUITE 220 PRIVATE OFFICES



COMMON KITCHEN



COMMON LOBBY



COMMON OUTDOOR DINING

PRESENTED BY

GENE DEERING
805.879.9623
gdeering@radiusgroup.com
CA LIC. 01450943



6500 HOLLISTER AVE.

GOLETA
CALIFORNIA
93117

SUBLEASE

Class A Creative/Office Space Positioned in the South Coast's Robust Engineering & Tech Corridor



PRESENTED BY

GENE DEERING
805.879.9623
gdeering@radiusgroup.com

CA LIC. 01450943



6500
HOLLISTER AVE.
GOLETA
CALIFORNIA
93117

SUBLEASE

Class A Creative/Office Space Positioned in the South Coast's Robust Engineering & Tech Corridor

SELECT
NEARBY
AMENITIES
&
BUSINESSES

ELLWOOD MESA OPEN SPACE
& SPERLING PRESERVE

CAMINO REAL MARKETPLACE



HOLLISTER VILLAGE PLAZA



GLEN ANNIE
GOLF CLUB

SOUTH COAST
TECH CORRIDOR



CABRILLO BUSINESS PARK



HOLLISTER
VILLAGE
RESIDENTIAL
DEVELOPMENT

6500
HOLLISTER AVE

UCSB CAMPUS

GOLETA
BEACH PARK



PRESENTED BY

GENE DEERING
805.879.9623
gdeering@radiusgroup.com
CA LIC. 01450943





GOLETA #2 CALIFORNIA STARTUP CITY OUTSIDE BAY AREA

A recent study by MIT scientists ranked Goleta #2 for cities outside the Bay Area and significantly higher in entrepreneurial quality, well above the 95th percentile—on par with cities like Cupertino and Santa Clara, and far higher than all the cities in the LA Basin.

Goleta has a long history of business with a high-tech focus, growing its reputation over the past decade as one of the best places for entrepreneurs and small businesses. Burgeoning start-ups and more established companies have called Goleta home and honed in on the area due in particular to its high quality of living and world-class educational institutions, including the acclaimed University of California, Santa Barbara with its world-renowned engineering program.

The City's fast growing technology base is populated by firms in the high-tech, defense, and medical product industries. Major tech companies who have established a strong presence in the area include **Google, Microsoft, Raytheon, Sonos, Yardi, AppFolio, Lockheed Martin, Northrop Grumman, Flir, Ergomotion,** and many more.

With the presence of UC Santa Barbara and proliferation of top tech companies, the South Coast region of Goleta, Santa Barbara and Carpinteria continues to attract talented professionals and industry leaders to the region.

#5 Forbes

UCSB ranked #5 among all public colleges by Forbes Magazine (2023)



UCSB

University of California, Santa Barbara

The acclaimed University of California, Santa Barbara is the City of Goleta's largest employer and boasts a sprawling campus situated along the pristine California coastline about 100 miles northwest of Los Angeles. *Forbes Magazine* ranks UCSB #5 among all public colleges in its 2023 "America's Top Colleges" guide, while *Newsweek* has named UCSB one of the country's "hottest colleges" twice in the past decade. The university offers over 200 majors, degrees and credentials and remains one of the toughest 4-year institutions to get into with a stringent 26% acceptance rate versus the 68% national acceptance rate. UCSB boasts 6 Nobel Laureates, with three from the university's esteemed engineering program, which has been ranked among the top two public universities in the world for engineering and computer science research for the past 13 years (2011-2023).



“THE GOOD LAND”

The city of Goleta rests a few minutes north of Santa Barbara in the South Coast region of Santa Barbara County, roughly 330 miles south of San Francisco and 90 miles north of Los Angeles. Goleta and the Gaviota Coast to the north make up 12 picturesque miles of the Santa Barbara coastline. In fact the area is known as The Good Land for its sprawling ranches, fertile farms, lemon orchards and sustainable gardens that supply local restaurants and farmers markets year round. From the Goleta pier to Point Arguello, the area is a recreational paradise. Whether fishing off the pier, hiking the bluffs, surfing Campus Point or getting up close and personal with wildlife while kayaking in the Goleta Slough, there is something for everyone.

The South Coast region's central location, year-round mild climate, proximity to the University of California, Santa Barbara (UCSB), high quality of living, bustling technology industry and wealth of outdoor amenities are but a few of the reasons Goleta and Santa Barbara are regularly selected among the best places to live and work by numerous sources including [livability.com](#), Money Magazine and Sunset Magazine.



Ellwood Mesa Sperling Preserve & Santa Barbara Shores Park

This 230-acre preserve is the largest publicly-owned coastal open space on Santa Barbara County's South Coast. Popular with runners, surfers, bikers and equestrians, the Ellwood Mesa Coastal Trail meanders through natural habitats and provides beach access via the Ellwood Mesa bluffs. The Monarch Butterfly Grove lies just north and spans 78 acres of eucalyptus groves giving safe shelter to the butterflies who bear its name from late autumn through winter.

