

FOR SALE/LEASE

# FORMER ART VAN/LOVES FURNITURE

29905 7 MILE RD, LIVONIA, MI 48152



## PROPERTY DETAILS

<b>LOCATION:</b>	29905 7 Mile Rd Livonia, MI 48152
<b>PROPERTY TYPE:</b>	Freestanding
<b>DATE AVAILABLE:</b>	Immediately
<b>PROPERTY TAXES:</b>	\$105,156.95
<b>BUILDING SIZE:</b>	61,732 SF
<b>LOT SIZE:</b>	3.42 AC
<b>AVAILABLE SPACE:</b>	61,732 SF
<b>ZONING:</b>	C-1
<b>GLA:</b>	61,732 SF
<b>TRAFFIC COUNT:</b>	7 Mile Rd (22,561 CPD) Middlebelt Rd (28,100 CPD)

### EXCLUSIVELY LISTED BY:



**MATTHEW D.  
SWANTKO**

Principal  
[mswantko@landmarkcres.com](mailto:mswantko@landmarkcres.com)  
248 488 2620



**MAX J.  
GOLDMAN**

Senior Director  
[mgoldman@landmarkcres.com](mailto:mgoldman@landmarkcres.com)  
248 488 2620



**RICHARD A.  
SHLOM**

Managing Director  
[rshlom@landmarkcres.com](mailto:rshlom@landmarkcres.com)  
248 488 2620



**ANDREW C.  
LUCKOFF**

Director  
[aluckoff@landmarkcres.com](mailto:aluckoff@landmarkcres.com)  
248 488 2620

3.42 AC

**LOT SIZE**

61,732 SF

**BLDG SIZE**

### DESCRIPTION

Freestanding building adjacent to LA Fitness and across from Kohl's and Super Walmart. Well located in the heart of Livonia, near the 7 Mile Road & Middlebelt Road intersection. Building is ideal for retail, storage, or other box uses.

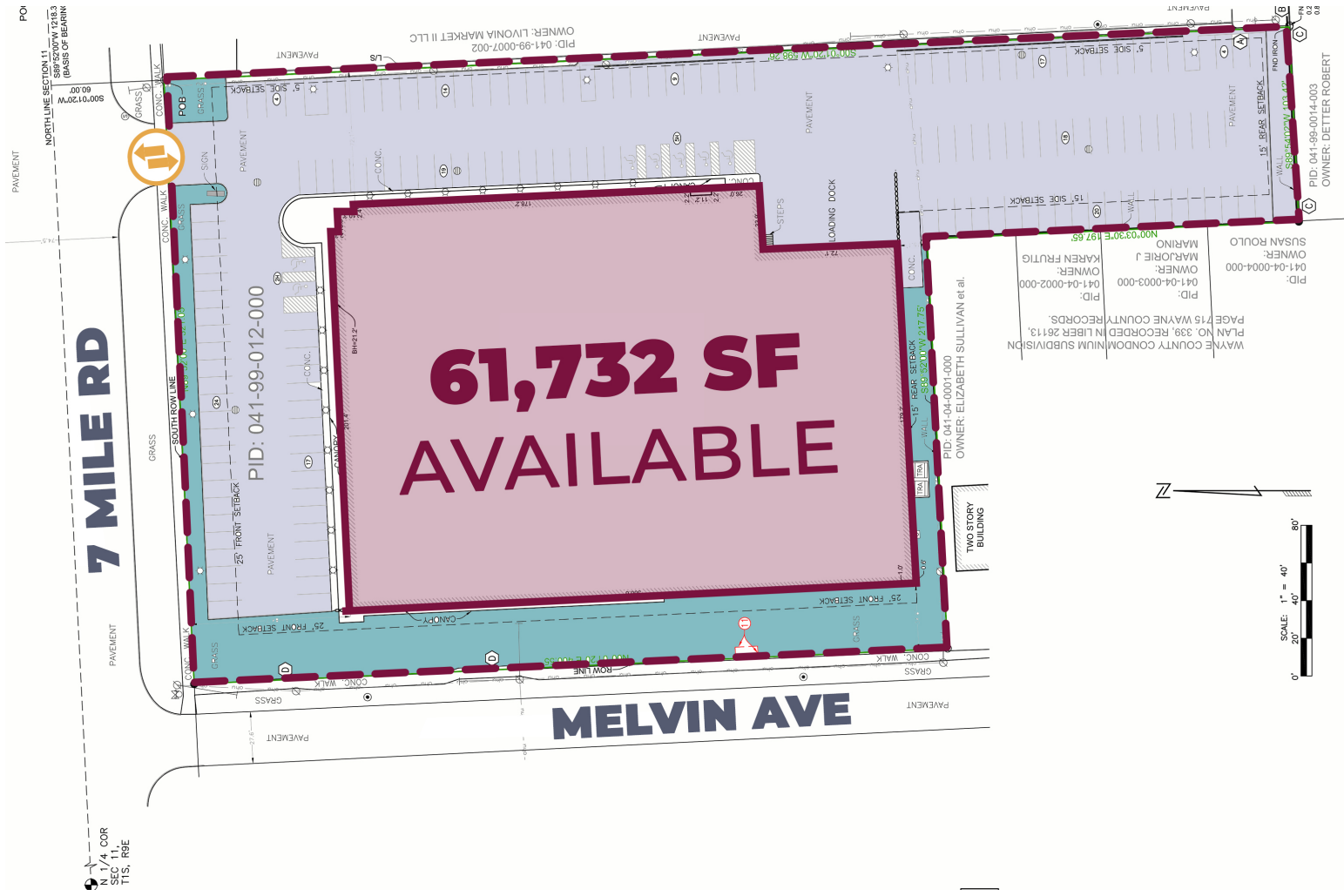
# MICRO AERIAL



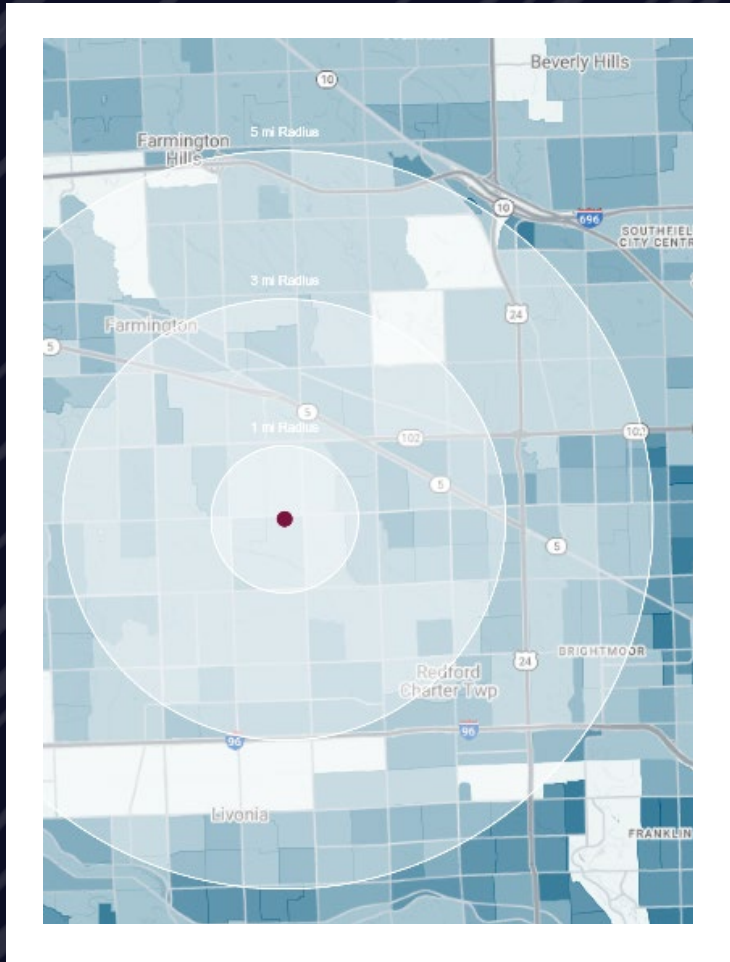
# MACRO AERIAL



# SURVEY



# DEMOGRAPHICS



## FORMER ART VAN/LOVES FURNITURE

29905 7 Mile Rd, Livonia, MI 48152

# DEMOGRAPHICS

<b>POPULATION</b>	<b>1 MILE</b>	<b>3 MILE</b>	<b>5 MILE</b>
2022 Estimated Population	9,356	93,314	233,379
2027 Projected Population	9,165	92,326	231,765
2020 Census Population	9,445	94,246	235,631
2010 Census Population	9,512	92,903	233,241
Projected Annual Growth 2022 to 2027	-0.4%	-0.2%	-0.1%
Historical Annual Growth 2010 to 2022	-0.1%	-	-
<b>HOUSEHOLDS</b>			
2022 Estimated Households	4,016	38,928	98,707
2027 Projected Households	3,966	38,843	98,907
2020 Census Households	4,047	39,272	99,606
2010 Census Households	3,969	37,864	96,000
Projected Annual Growth 2022 to 2027	-0.2%	-	-
Historical Annual Growth 2010 to 2022	-	-	-
<b>RACE</b>			
2022 Est. White	75.0%	67.8%	56.0%
2022 Est. Black	12.2%	19.8%	30.4%
2022 Est. Asian or Pacific Islander	4.9%	4.1%	6.3%
2022 Est. American Indian or Alaska Native	0.3%	0.3%	0.3%
2022 Est. Other Races	7.6%	8.1%	7.1%
<b>INCOME</b>			
2022 Est. Average Household Income	\$85,445	\$82,435	\$87,007
2022 Est. Median Household Income	\$71,537	\$70,853	\$72,237
2022 Est. Per Capita Income	\$36,779	\$34,532	\$36,917
<b>BUSINESS</b>			
2022 Est. Total Businesses	358	3,584	10,796
2022 Est. Total Employees	2,894	29,696	142,095

## CONTACT US

**MS**

**MATTHEW D.  
SWANTKO**

*Principal*

[mswantko@landmarkcres.com](mailto:mswantko@landmarkcres.com)  
248 488 2620

**MG**

**MAX J.  
GOLDMAN**

*Senior Director*

[mgoldman@landmarkcres.com](mailto:mgoldman@landmarkcres.com)  
248 488 2620

**RS**

**RICHARD A.  
SHLOM**

*Managing Director*

[rshlom@landmarkcres.com](mailto:rshlom@landmarkcres.com)  
248 488 2620

**AL**

**ANDREW C.  
LUCKOFF**

*Director*

[aluckoff@landmarkcres.com](mailto:aluckoff@landmarkcres.com)  
248 488 2620

**LANDMARK**  
COMMERCIAL ▲ REAL ESTATE ▲ SERVICES

30500 Northwestern Hwy, Suite 200  
Farmington Hills, MI 48334  
248.488.2620  
[landmarkcres.com](http://landmarkcres.com)

LANDMARK COMMERCIAL REAL ESTATE SERVICES – Licensed Real Estate Brokers. The information above has been obtained from sources believed reliable. While we do not doubt its accuracy, we have not verified it and make no guarantee, warranty or representation about it. It is your responsibility to independently confirm its accuracy and completeness. Any projections, opinions, assumptions or estimates are used for example only and do not represent the current or future performance of the property. The value of this transaction to you depends on tax and other factors which should be evaluated by your tax, financial and legal advisors. You and your advisors should conduct a careful, independent investigation of the property to determine to your satisfaction, the suitability of the property for your needs.