

# FOR LEASE

Fully Finished Office Space | Chilliwack Family Centre

## 9123 MARY STREET

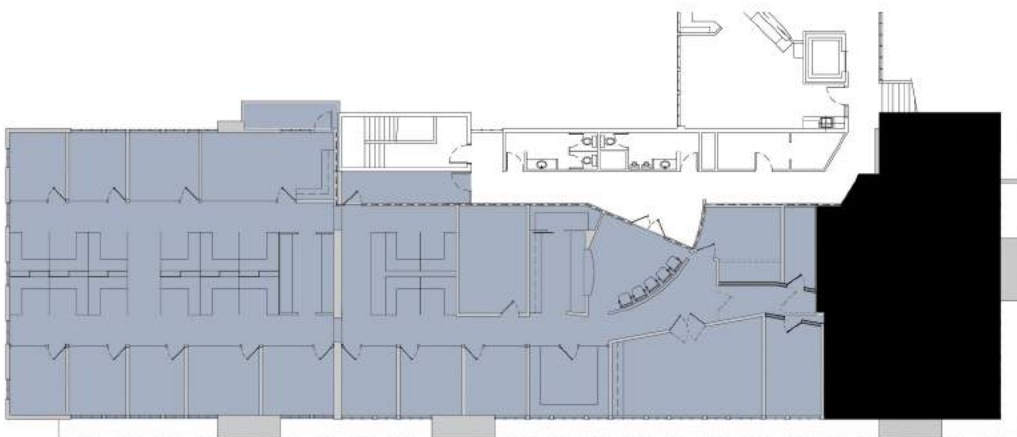
CHILLIWACK, BC





# THE OPPORTUNITY

Opportunity to lease fully finished office space in a high quality professional building located within the heart of Chilliwack 1 block from Chilliwack General Hospital



## THE OPPORTUNITY

Premier professional office space located on the west side of Mary Street in downtown Chilliwack, one block from Chilliwack General Hospital. Ideal for doctors, medical services, practitioners, educational institutions & related services as well as other office or retail uses such as insurance brokers, real estate offices, etc. 72 onsite parking stalls and 2 hour parking along Brett Avenue and Mary Street. This is second floor space serviced by an elevator, currently finished as an office w/ reception area, private executive offices, board/conference room, Bullpen & lunch room. Quality professional space in a sought after location. Call for your personal tour.

<b>SIZE</b>	5,513 SQ.FT.
<b>RENT</b>	Contact Listing Agent
<b>ZONING</b>	C2
<b>FLOOR</b>	2
<b>AVAILABILITY</b>	JANUARY 2025

## PROPERTY HIGHLIGHTS

- 2 Storey 27,813 SQ.FT. Professional office building.
- Constructed in 1987 with additions in 1990s.
- Serviced by one (1) well-maintained elevator.
- 72 surface level parking stalls.
- Common areas extensively renovated in 2002.

## LOCATION

The property is located on the west side of Mary street in downtown Chilliwack, one block from Chilliwack General Hospital. Nearby amenities include Safeway, Shoppers Drug Mart, Starbucks, Save-on-Foods, Tim Hortons, A&W and McDonalds.



