



For Sale

6.5 Acres of Prime Infill Mixed Use Development

Orlando, FL 32805

Nate Eissler
Executive Vice President
nathan.eissler@jll.com
+1 407 342 7494

Tucker Brooks
Director
tucker.brooks@jll.com
+1 303 521 2157



6.5 Acres | 283,140 SF
Land Size

Orlando CBD
Location

I-G/T/PH
Zoning

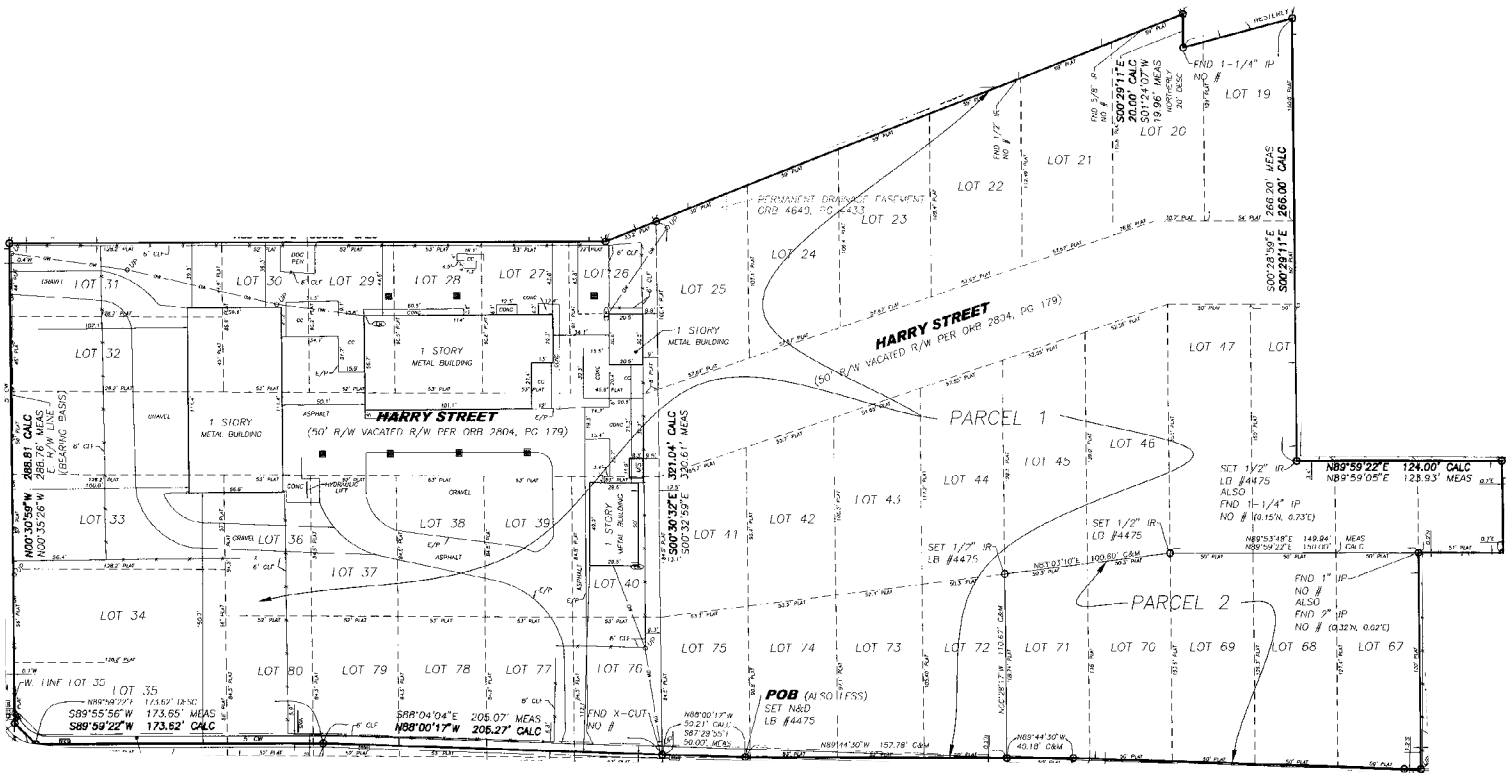
16,000 SF
Existing Building

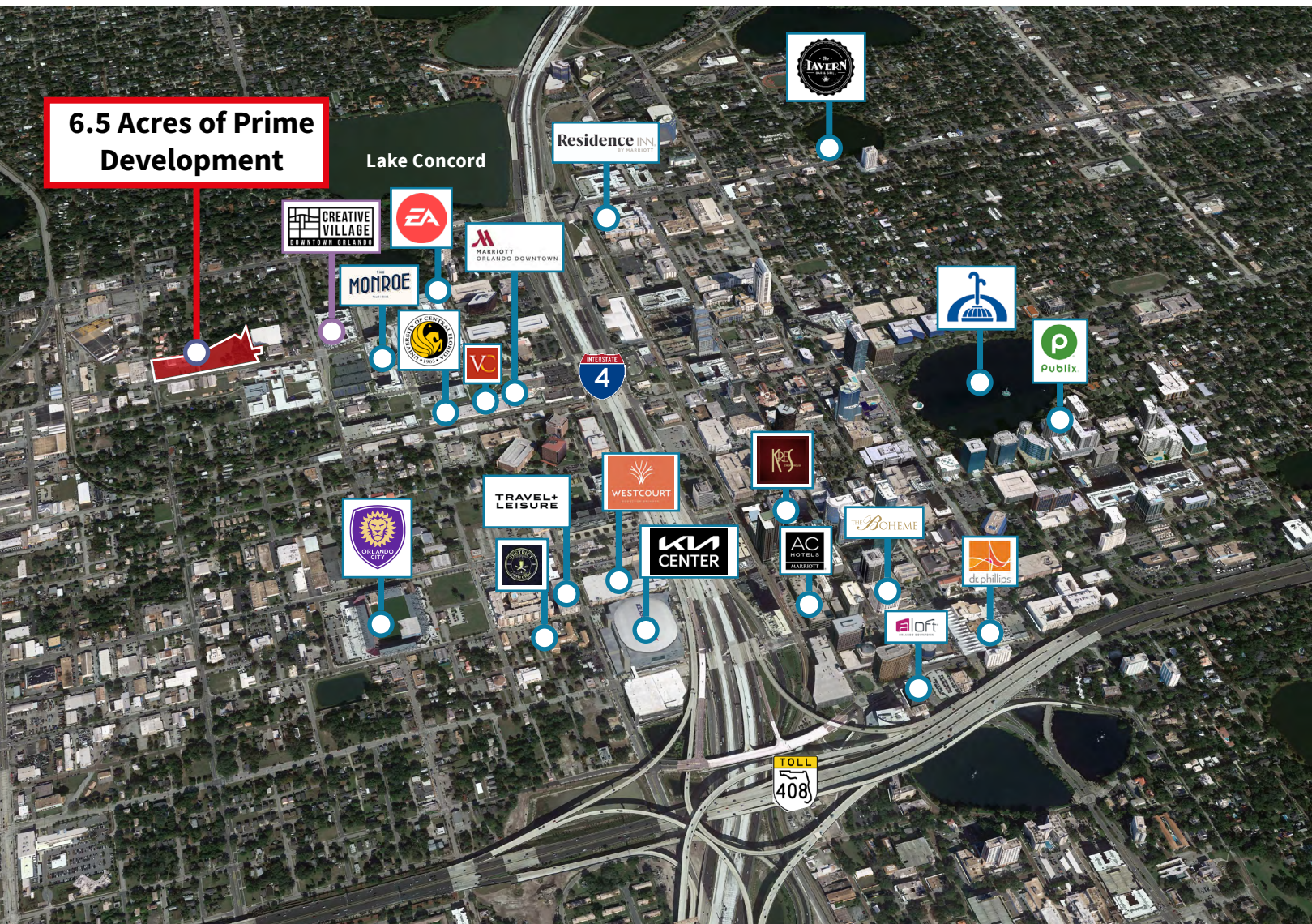
1954
Year Built

Inquire with Broker
Sale Price

09/26/2026
Existing Lease Expiration Date

Site Survey





Less than a
5 Minute
 walk from



September
 2022



For more information, please contact:

Nate Eissler
Executive Vice President
nathan.eissler@jll.com
+1 407 342 7494

Tucker Brooks
Director
tucker.brooks@jll.com
+1 303 521 2157