

# FOR LEASE

1075 Bandy Parkway, Locust Grove, GA 30248

## ***Locust Grove Medical Office Building***



### PROPERTY DETAILS

- 32,000 +/- SF Medical Office Building
- +/- 2,500 to 6,000 SF Shell Condition Space Available
- Lead Tenant is Takle Eye Group's New ASC & Clinical Office
- Generous Tenant Improvement Allowances
- 5:1 parking ratio
- Newly Constructed and Open for Business
- Located near I-75 Exit 212, near Bill Gardner Parkway and Strong Rock Parkway

**Office: 770-631-0499**

**Web: [stcom.us](http://stcom.us)**

*This information has been secured from sources we deem reliable, but we make no representations or warranties, expressed or implied as to the accuracy of the information.*



**SOUTHTREE**  
C O M M E R C I A L

**REAL ESTATE**

**Barry Garner**  
Commercial Agent  
770-294-4027  
[bgarner@stcom.us](mailto:bgarner@stcom.us)

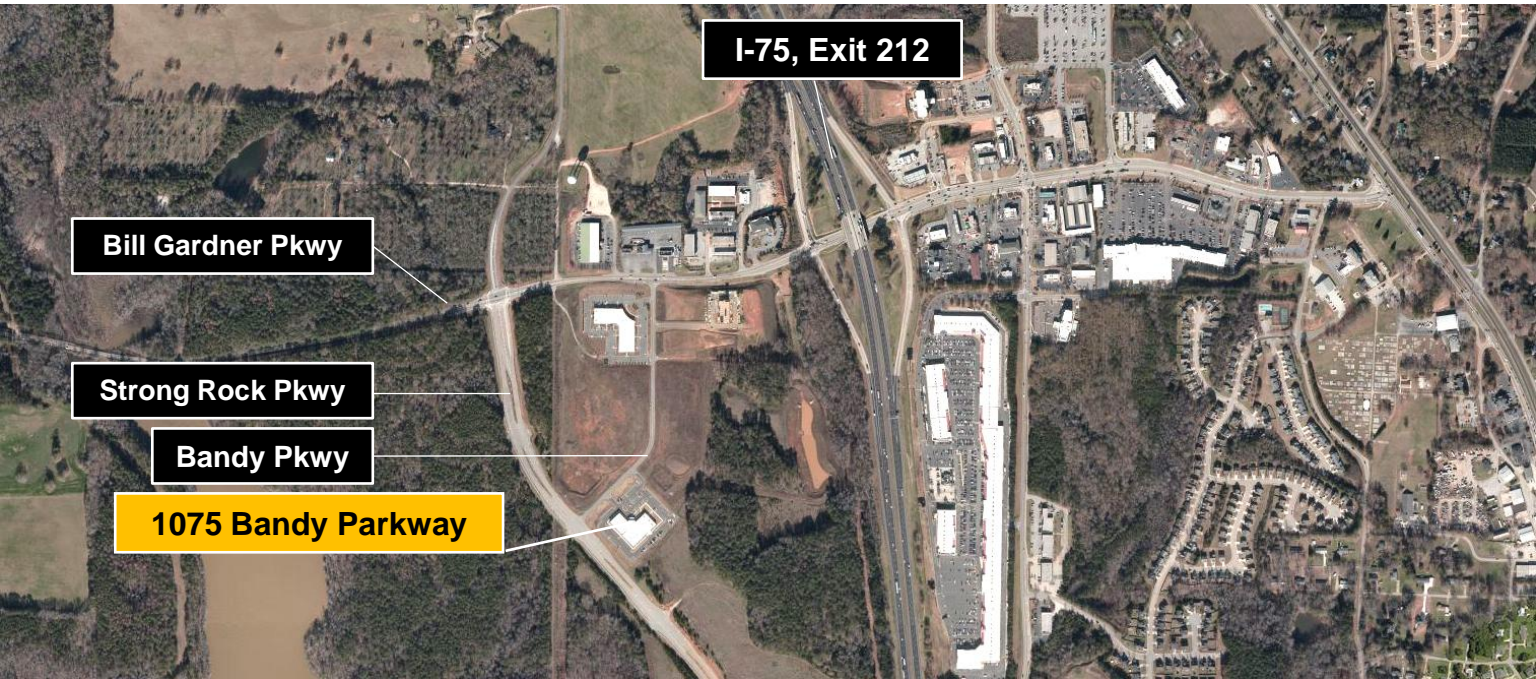
**Paul Schwinne, CCIM**  
Broker  
678-296-1588  
[pschwinne@stcom.us](mailto:pschwinne@stcom.us)

**201 Prospect Park, Suite A, Peachtree City, GA 30269**



# AERIAL VIEWS

1075 Bandy Parkway, Locust Grove, GA 30248



**Office: 770-631-0499**

**Web: stcom.us**

*This information has been secured from sources we deem reliable, but we make no representations or warranties, expressed or implied as to the accuracy of the information.*



**SOUTHTREE**  
C O M M E R C I A L

**REAL ESTATE**

**Barry Garner**  
Commercial Agent  
770-294-4027  
bgarner@stcom.us

**Paul Schwinne, CCIM**  
Broker  
678-296-1588  
pschwinne@stcom.us

**201 Prospect Park, Suite A, Peachtree City, GA 30269**