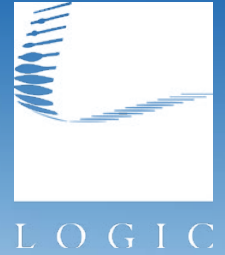


For Sale

Double R Blvd. & Professional Cir.




[Click for a Virtual Tour](#) 


10593 Double R Blvd.
Reno, NV 89521


Michael Keating, SIOR
Partner
775.386.9727
mkeating@logicCRE.com
S.0174942

Michael Dorn
Senior Associate
775.453.4436
mdorn@logicCRE.com
S.0189635

Listing Snapshot

 **\$1,600,000**
Sale Price

 **± 3,506 SF**
Total Square Footage

 **\$456 PSF**
Price Per Square Foot

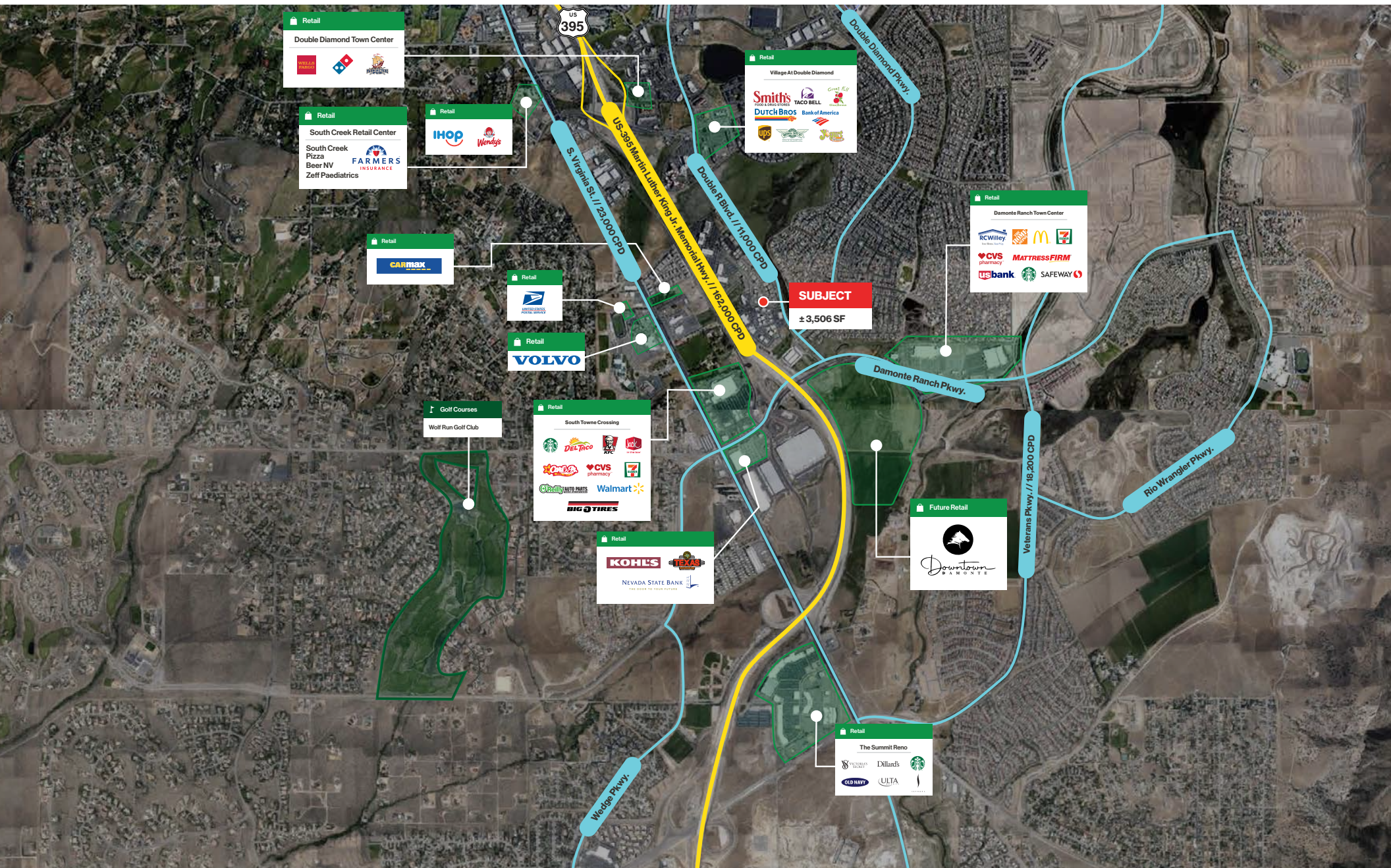
Property Overview

- Owner-User office in South Reno
- Double R Blvd. frontage
- Convenient access to I-580 & South Meadows Pkwy.
- Four (4) private offices
- Two (2) private restrooms
- Two (2) large open bullpens
- Recent interior renovations

Demographics

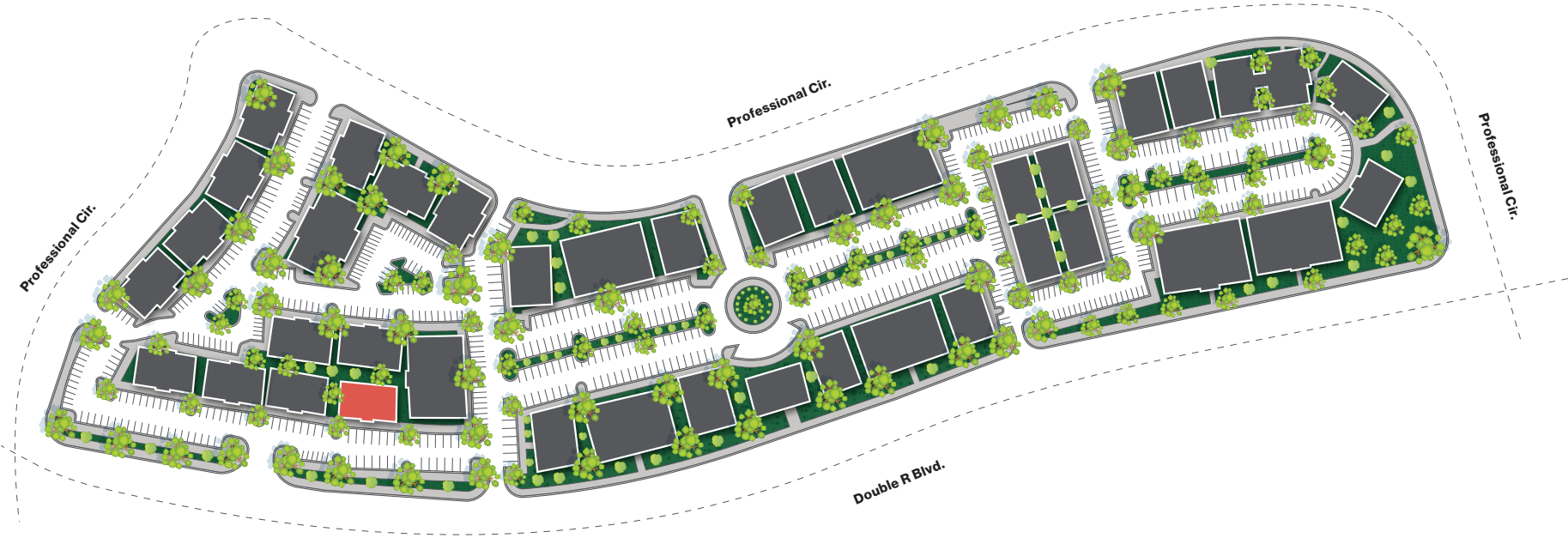
	1-mile	3-mile	5-mile
2025 Population	10,119	62,449	104,498
2025 Average Household Income	\$158,557	\$165,545	\$152,286
2025 Total Households	4,487	25,528	43,095



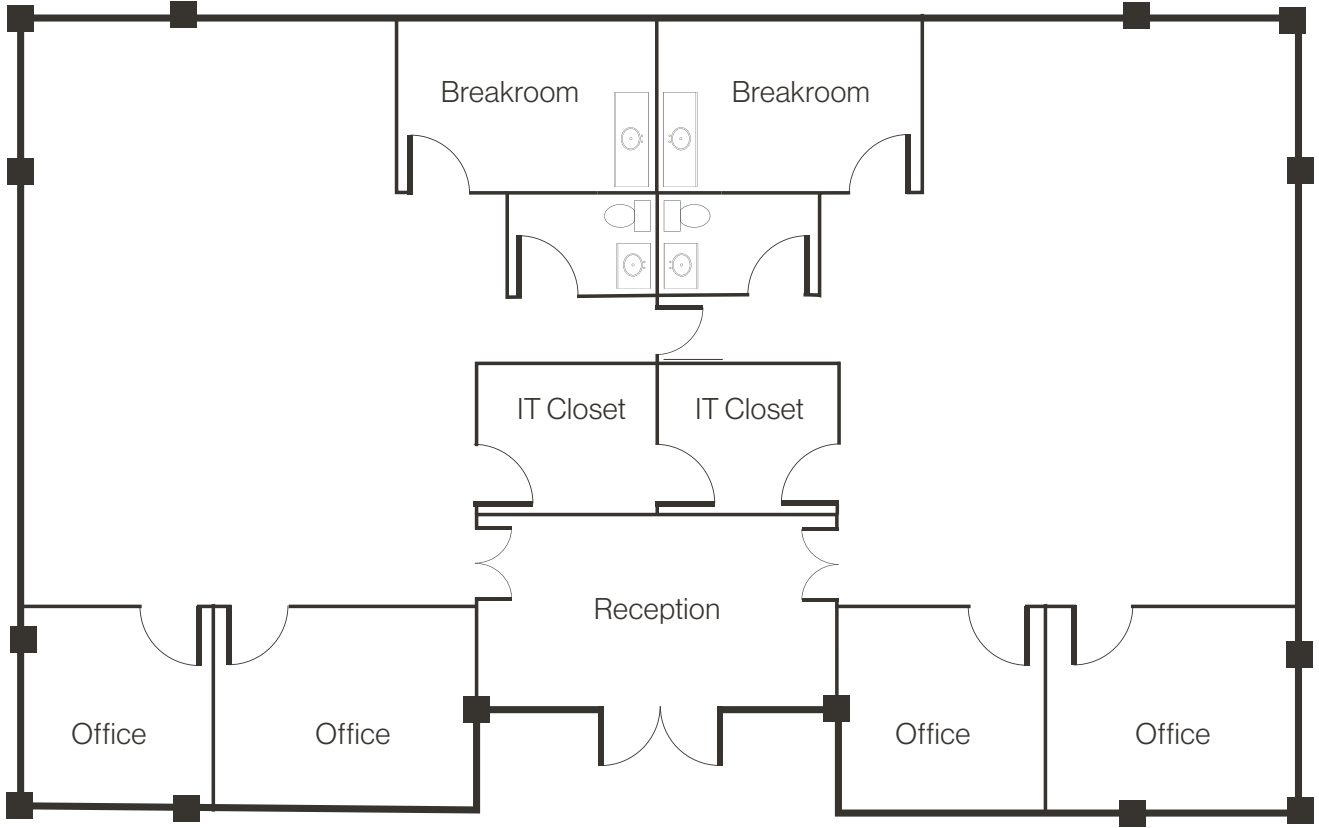


Site Plan

Subject NAP



Floor Plan



[Click for a Virtual Tour](#) 

Interior Photos



Property Photos



Property Photos



LOGIC Commercial Real Estate

Specializing in Brokerage and Receivership Services



Join our email list and
connect with us on LinkedIn

The information herein was obtained from sources deemed reliable; however LOGIC Commercial Real Estate makes no guarantees, warranties or representation as to the completeness or accuracy thereof.

For inquiries please reach out to our team.

Michael Keating, SIOR

Partner
775.386.9727
mkeating@logicCRE.com
S.0174942

Michael Dorn

Senior Associate
775.453.4436
mdorn@logicCRE.com
S.0189635