



**MODERN WORKPLACE. SOUTHPARK STYLE.**

**FOR LEASE**

**PRIVATE OUTDOOR SEATING AREA - RENDERING**

**TRAVIS HART**

Leasing Agent

704.390.9956 | [travis.hart@childressklein.com](mailto:travis.hart@childressklein.com)







# New Spec Suite Opportunity at 2115 Rexford

Imagine working in a space that not only meets your professional needs, but also inspires creativity and efficiency. Our innovative approach to office design ensures that every detail is crafted with your success in mind.

## KEY FEATURES:

- **Floor-to-Ceiling Glass Windows:** Extensive window line provides abundant natural light and stunning views.
- **Private Outdoor Seating Area Available:** Overlooking treelined Rexford Road, perfect for relaxation or informal meetings.
- **First Floor Location:** Direct suite entry from the building lobby for convenience and accessibility.
- **Availability Date:** ASAP



BUILDING LOBBY



BUILDING RESTROOMS



BUILDING CONFERENCE CENTER



# SPEC SUITE OPTION

## TENANT 1 (SUITE 110) | 3,158 RSF (AVAILABLE NOW)

### Workspace/Focus

- 5 Private Offices
- 8 Workstation (6'x8')

### Meeting Space

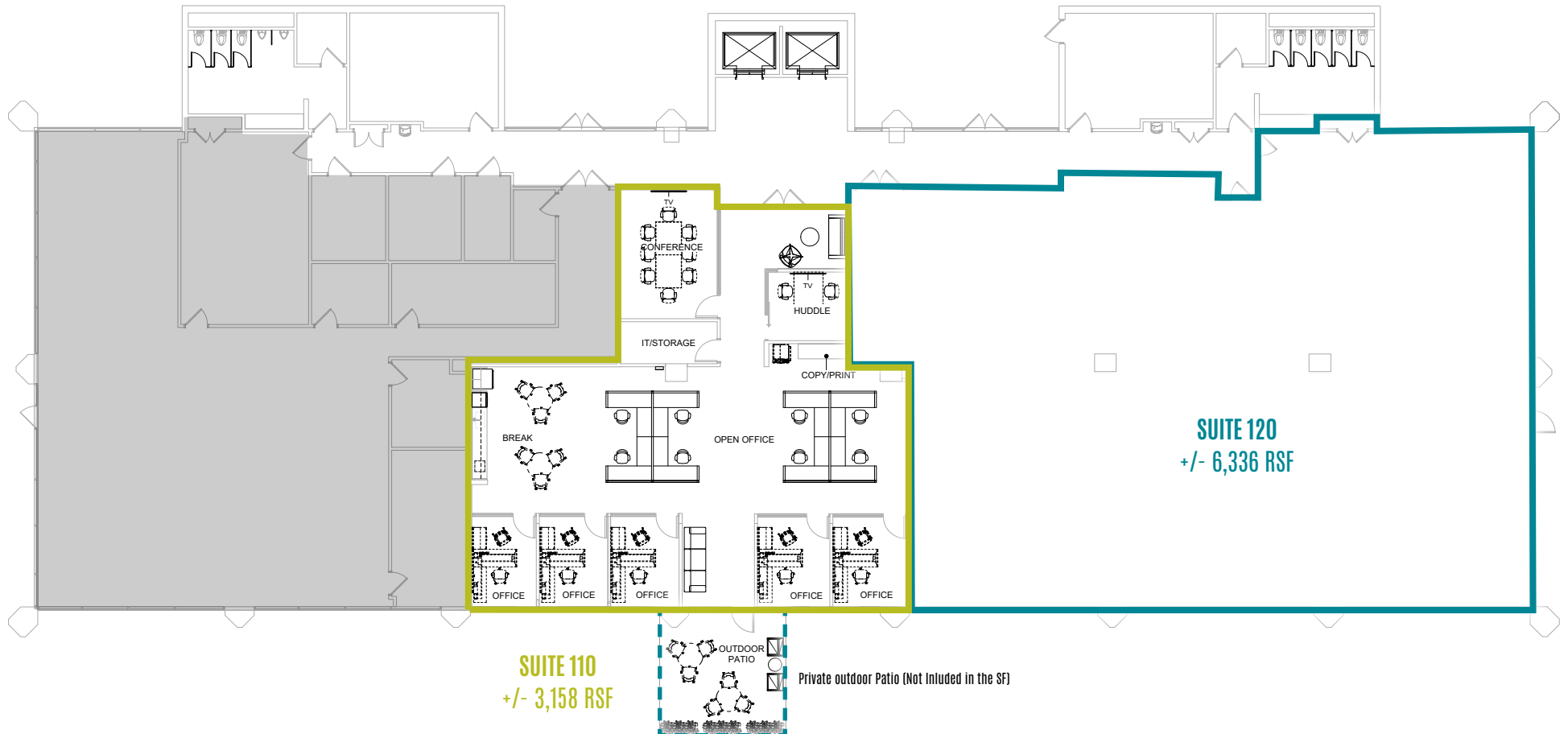
- 1 Huddle Rooms (2 Seats)
- 1 Conference (8 Seats)

### Shared Space

- 1 Break Room (200 SF)
- 1 Lobby (185 SF)
- 1 Outdoor Patio (275 SF)
- 1 Copy/Work Area
- 1 IT/Storage Room (80 SF)

## TENANT 2 (SUITE 120) | 6,336

(Shell Condition - Demisable Starting at 2,500 RSF)







# 3,158 RSF SPEC SUITE AVAILABLE NOW





# TEST FIT OPTION | SPACE IS DEMISABLE STARTING AT 2,500 RSF

## TENANT 2 | 6,336 RSF

### Workspace/Focus

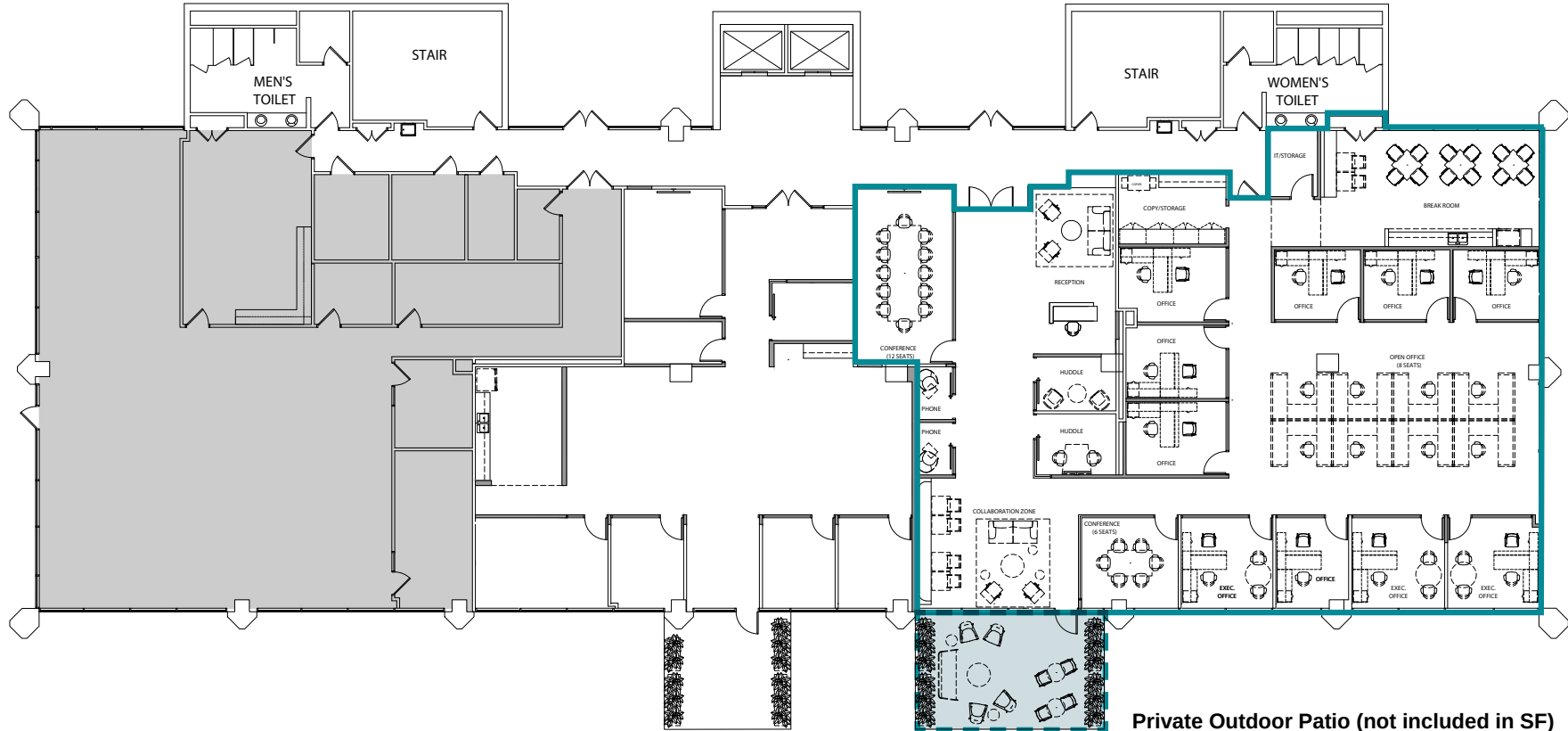
- 10 Private Offices
- 8 Workstation (6'x8')
- 2 Phone Rooms

### Meeting Space

- 2 Huddle Rooms (2 Seats)
- 1 Medium Conference (4-6 Seats)
- 1 Large Conference (12 Seats)

### Shared Space

- 1 Break Room (465 SF)
- 1 Lobby (300 SF)
- 1 Outdoor Patio (410 SF)
- 1 Copy / Work Area
- 1 IT/Storage Room (60 SF)





# OFFICE LEASING

**TRAVIS HART**

Leasing Agent

704.343.4319

[travis.hart@childressklein.com](mailto:travis.hart@childressklein.com)

