

welltower

MEDICAL OFFICE SPACE

FOR LEASE

Click or Scan Below



For Information:

MATT YOUNG

Regional Director, Leasing

469.822.7743

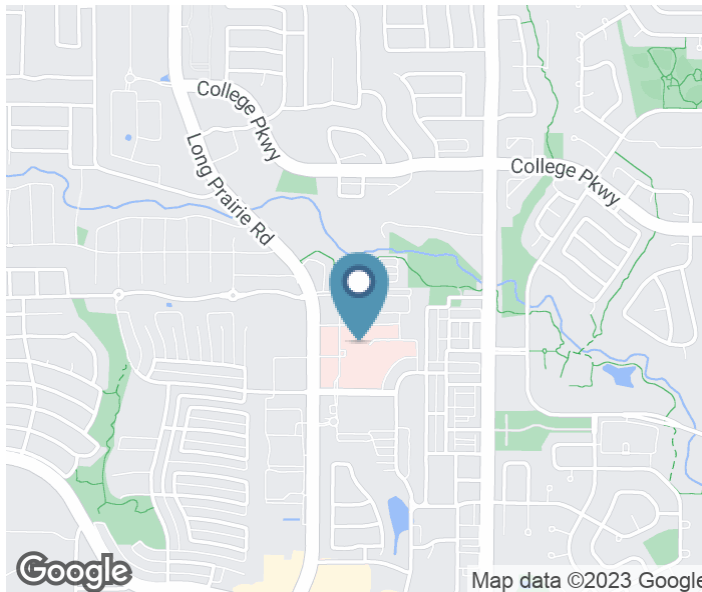
myoung@welltower.com

River Walk Medical Park III

4370 MEDICAL ARTS DRIVE | FLOWER MOUND, TX

medicaloffice.welltower.com

EXECUTIVE SUMMARY



Location Description

River Walk III is attached to the Texas Health Presbyterian Hospital in Flower Mound, Texas located on Medical Arts Drive, just Northeast of the intersection of Long Prairie Rd (2499) and Windsor Dr./ Central Park Ave.

Property Highlights

- 83,000 square foot, Class A medical office building located in the new River Walk Professional Park
- Directly attached to the new Texas Health Presbyterian Hospital Flower Mound
- Anchored by Texas Oncology
- Medical office suites ready to be designed to your specifications

FLOOR PLANS

welltower

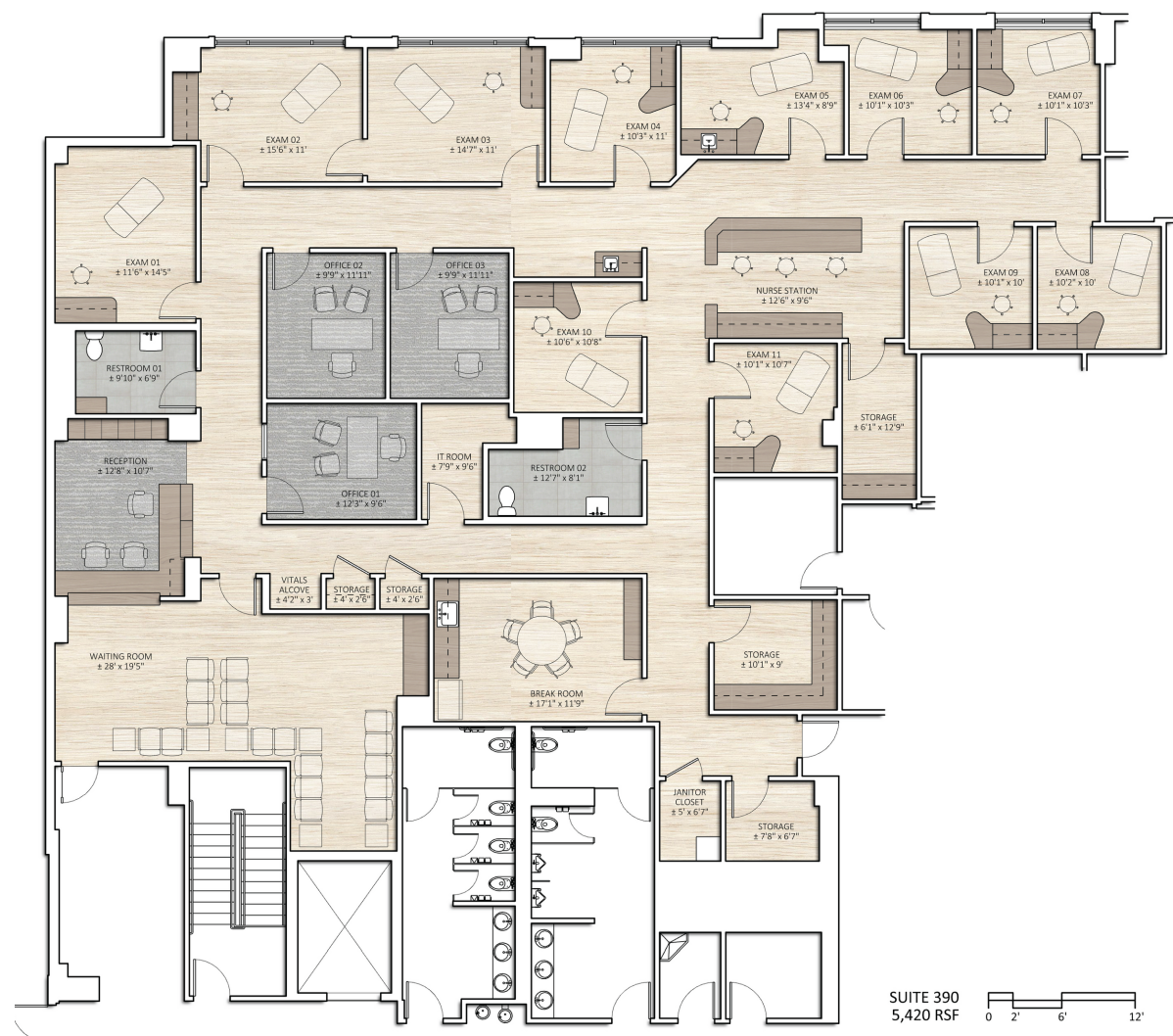


310

2,697 RSF

MATT YOUNG
Regional Director, Leasing
469.822.7743
myoung@welltower.com

FLOOR PLANS



390

5,420 RSF

MATT YOUNG
Regional Director, Leasing
469.822.7743
myoung@welltower.com