

22500 W. SEVEN MILE ROAD
DETROIT, MICHIGAN



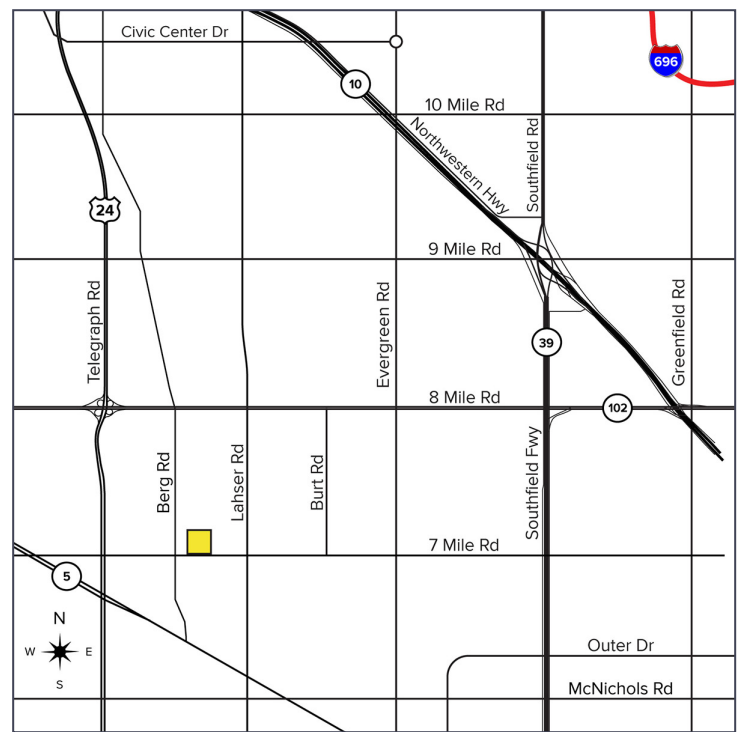
**SIGNATURE
ASSOCIATES**
KNOW SIGNATURE | KNOW RESULTS

RETAIL FOR SALE
1,812 Square Feet Available



PROPERTY FEATURES

- 1,812 square feet available
- Zoned B4
- (3) Overhead doors
- Fenced and paved yard
- Excellent contractor yard or auto repair
- Sale Price: \$165,000 (\$91.06/sq.ft.)



For more information, please contact:

JOE STACK
(248) 359 0615
jstack@signatureassociates.com

MARVIN PETROUS
(248) 359 0647
mpetrous@signatureassociates.com

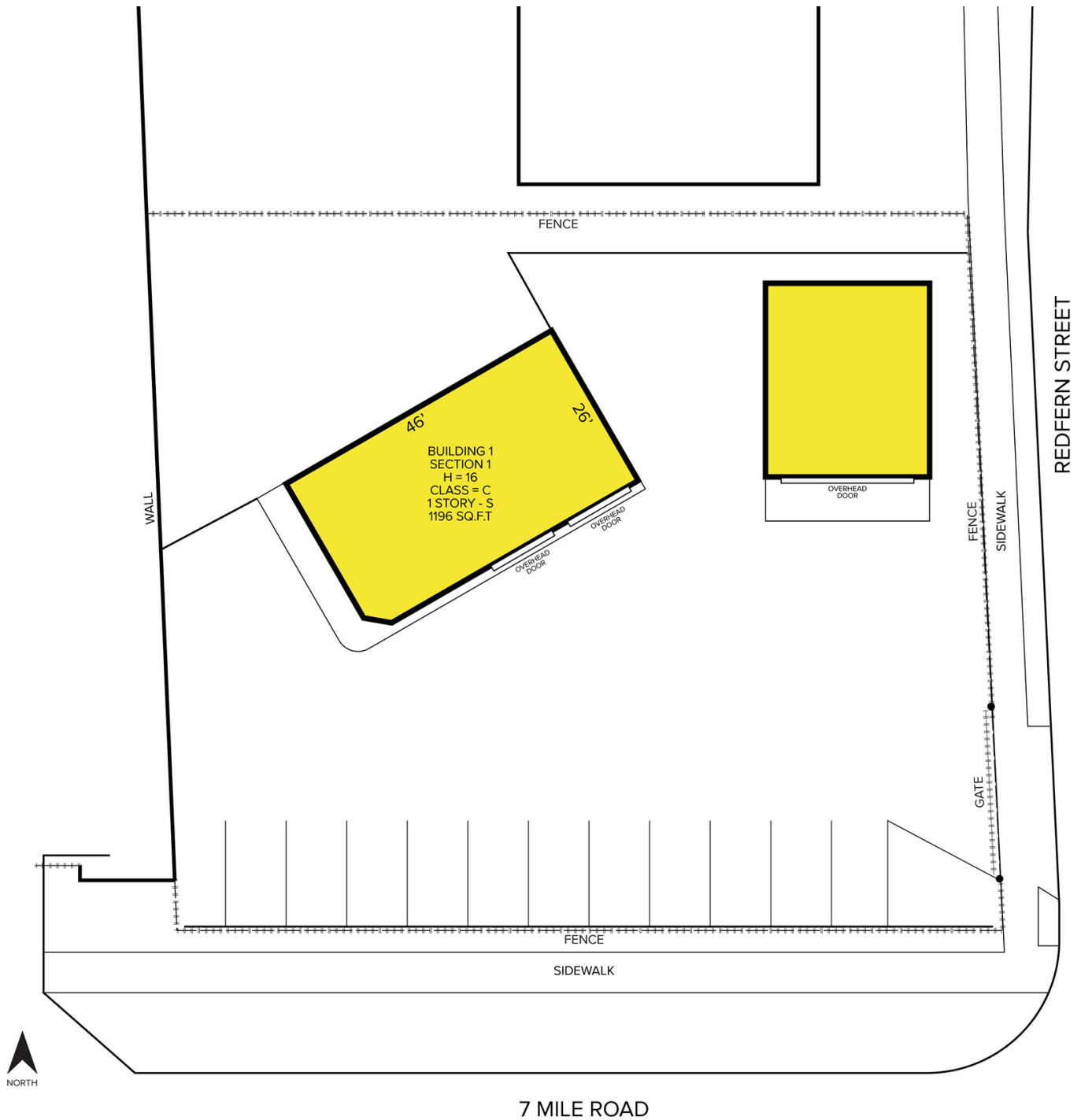
SIGNATURE ASSOCIATES
One Towne Square, Suite 1200
Southfield, MI 48076
www.signatureassociates.com

22500 W. Seven Mile Road – Detroit, Michigan

Retail For Sale

1,812
Square Feet
AVAILABLE

Site Plan



For more information, please contact:

JOE STACK
(248) 359 0615
jstack@signatureassociates.com

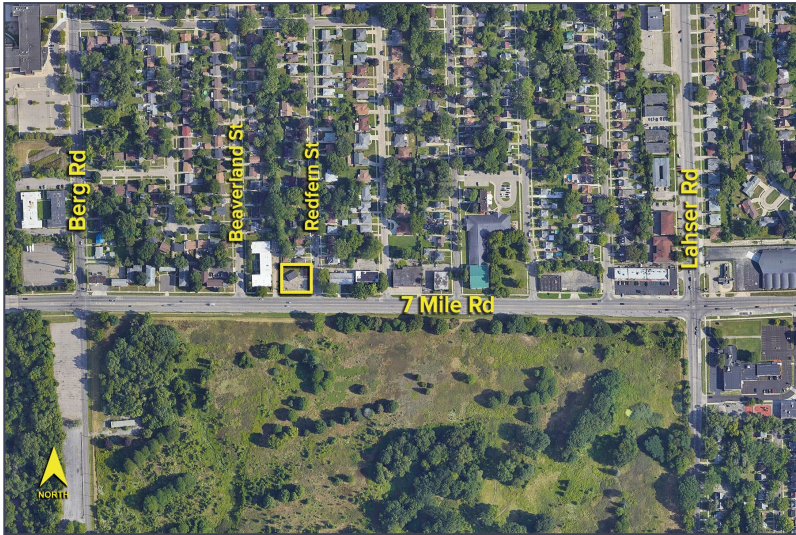
MARVIN PETROUS
(248) 359 0647
mpetrous@signatureassociates.com

SIGNATURE ASSOCIATES
One Towne Square, Suite 1200
Southfield, MI 48076
www.signatureassociates.com

22500 W. Seven Mile Road – Detroit, Michigan

Retail For Sale

1,812
Square Feet
AVAILABLE

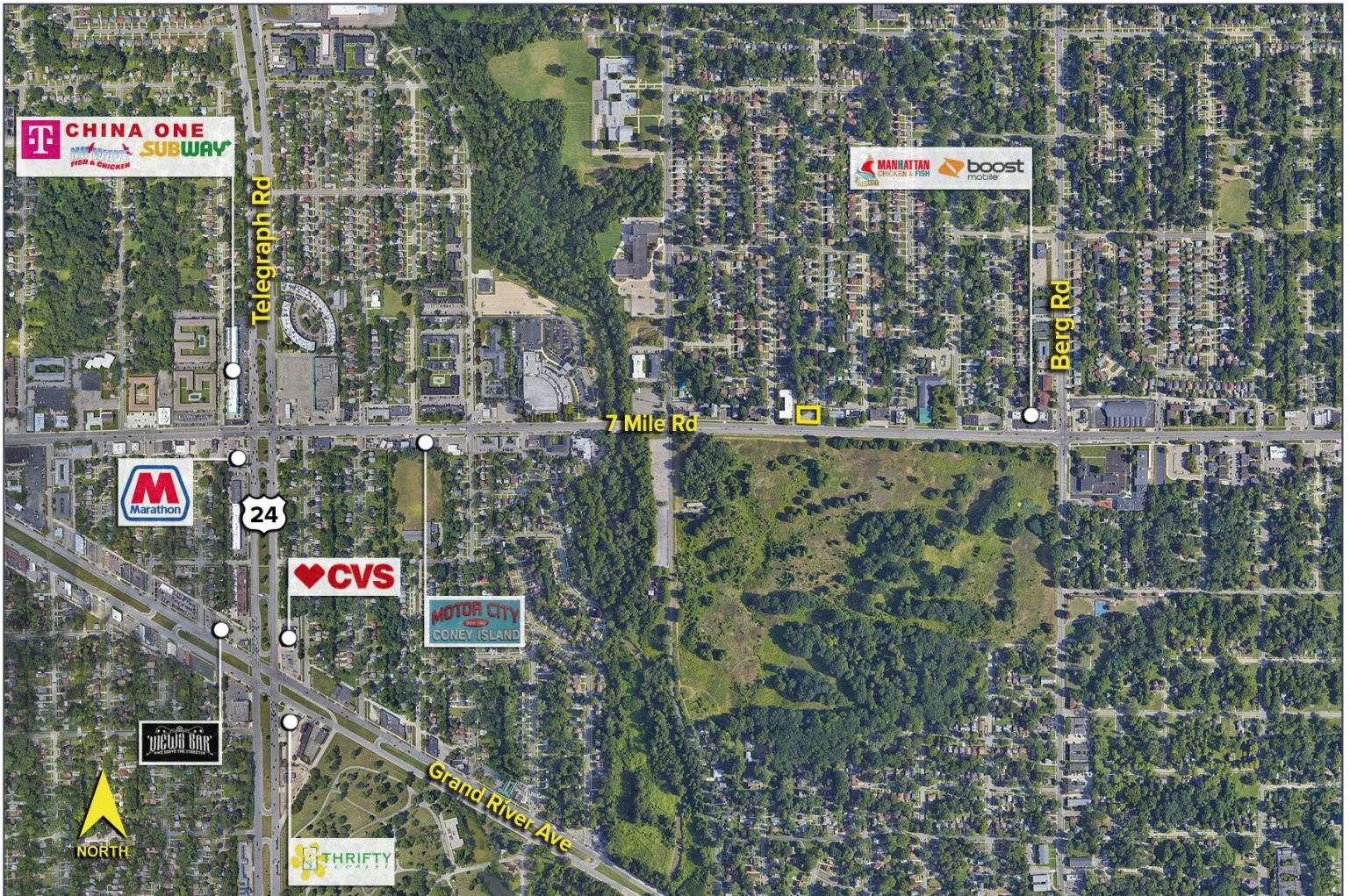


DEMOGRAPHICS

	POPULATION	MED. HH INCOME
1 MILE	15,198	\$45,278
3 MILE	112,952	\$53,551
5 MILE	312,596	\$59,953

TRAFFIC COUNTS

16,345	7 Mile W. of Lahser Rd.
16,155	7 Mile E. of Lahser Rd.
10,392	Lasher Road. S. of 7 Mile
12,582	Lasher Road. N. of 7 Mile



For more information, please contact:

JOE STACK
(248) 359 0615
jstack@signatureassociates.com

MARVIN PETROUS
(248) 359 0647
mpetrous@signatureassociates.com

SIGNATURE ASSOCIATES
One Towne Square, Suite 1200
Southfield, MI 48076
www.signatureassociates.com