



NoHo Flats Phase 2 Street Retail Available

505 N. Rome Avenue
Tampa, FL 33606

Jaclyn Langholz

Executive Vice President

Retail Services

+1 813 228 9834

jaclyn.langholz@colliers.com

Colliers

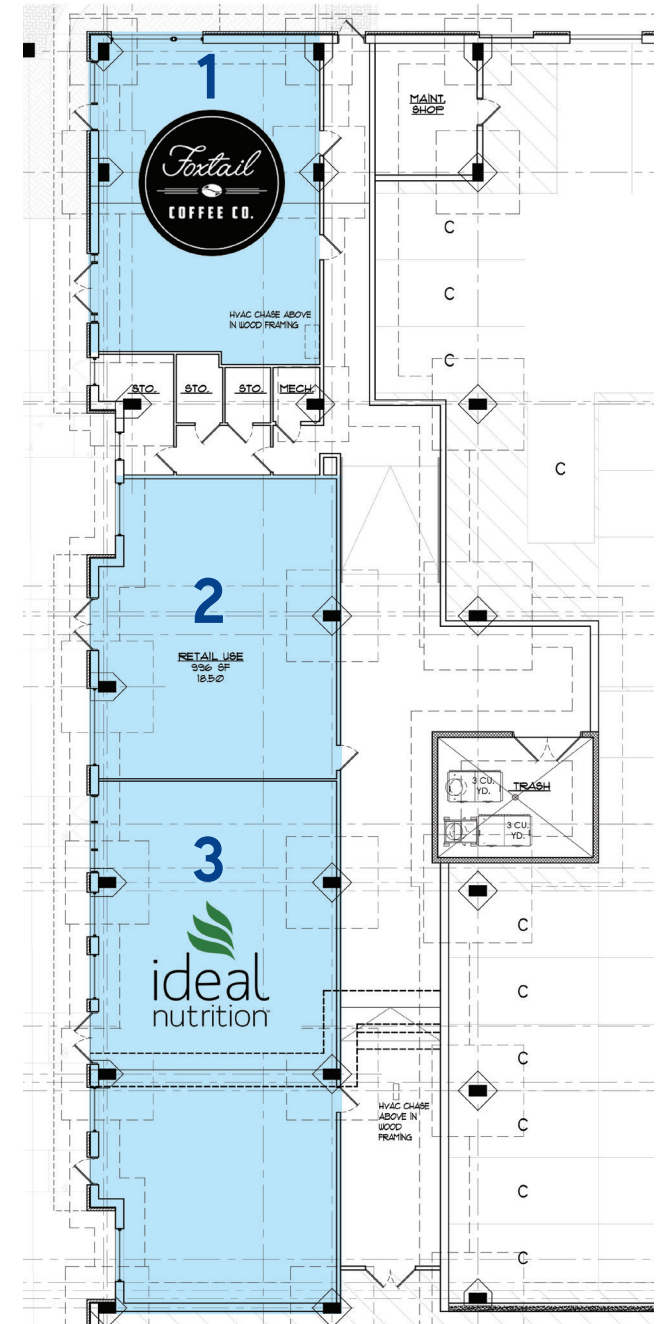
NoHo Flats Phase 2

- Total of 3,746 SF of new construction, retail space in the highly desirable North Hyde Park area
- 996 SF available
- Attached to a 387 unit residential development
- High daytime population over 242,000
- Under construction and scheduled to deliver by end of 2026
- Total population of 134,111 within 3 miles with an average household income of \$141,296

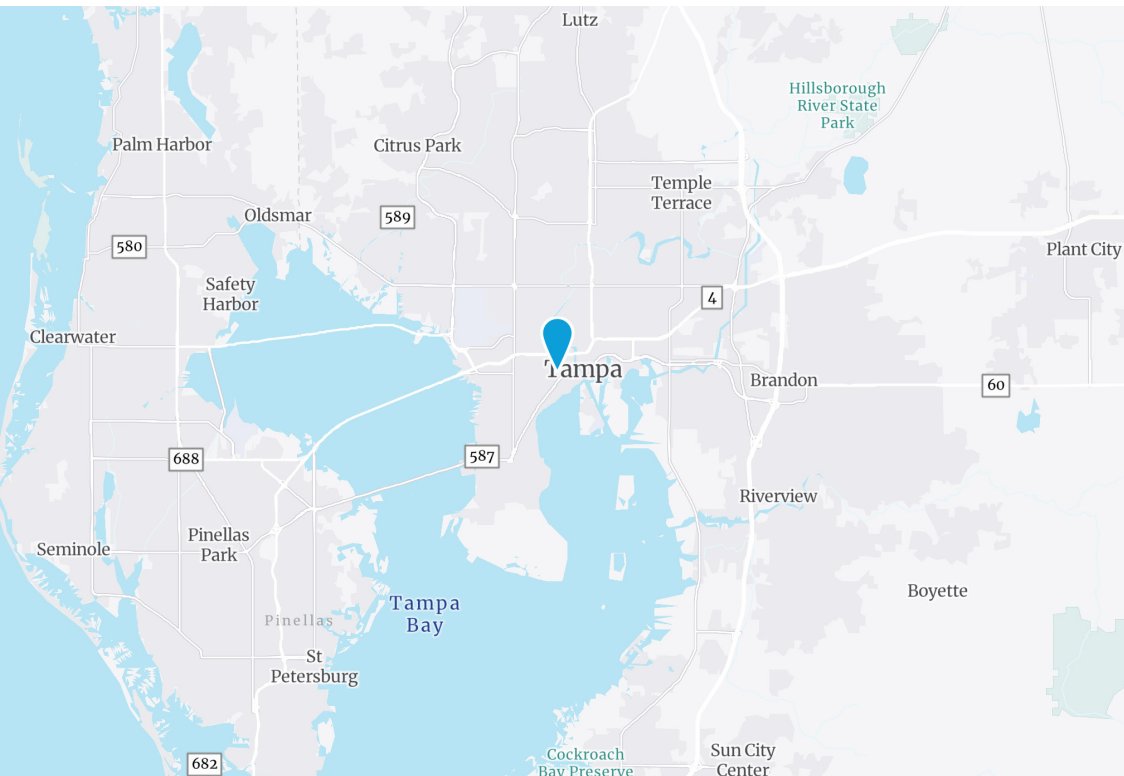


Suite	Tenant	SF
1	Foxtail Coffee Co	1,000 SF
2	Available	996 SF
3	Ideal Nutrition	1,750 SF

Retail Site Plan



View Online
colliers.com



Area Demographics

	1-Mile	3-Mile	5-Mile
Total Population	25,985	134,111	256,084
Daytime Population	39,748	242,720	397,293
Average Household Income	\$133,043	\$141,296	\$130,354
Median Age	29.9	37.2	38.4

