

FOR LEASE

554 SAN ANTONIO RD, MOUNTAIN VIEW, CA

±6,193 - 12,386 SQ. FT. OFFICE / RETAIL / MEDICAL



**PREMIER
PROPERTIES**
COMMERCIAL
REAL ESTATE

BRAD EHIKIAN
Partner
dre license #01736391
| 650.618.3001
| brad.ehikian@prprop.com

JON GOLDMAN
Partner
dre license #01295503
| 650.618.3003
| jon.goldman@prprop.com

JESSE EBNER
Vice President
dre license #02055989
| 650.618.3017
| jesse.ebner@prprop.com

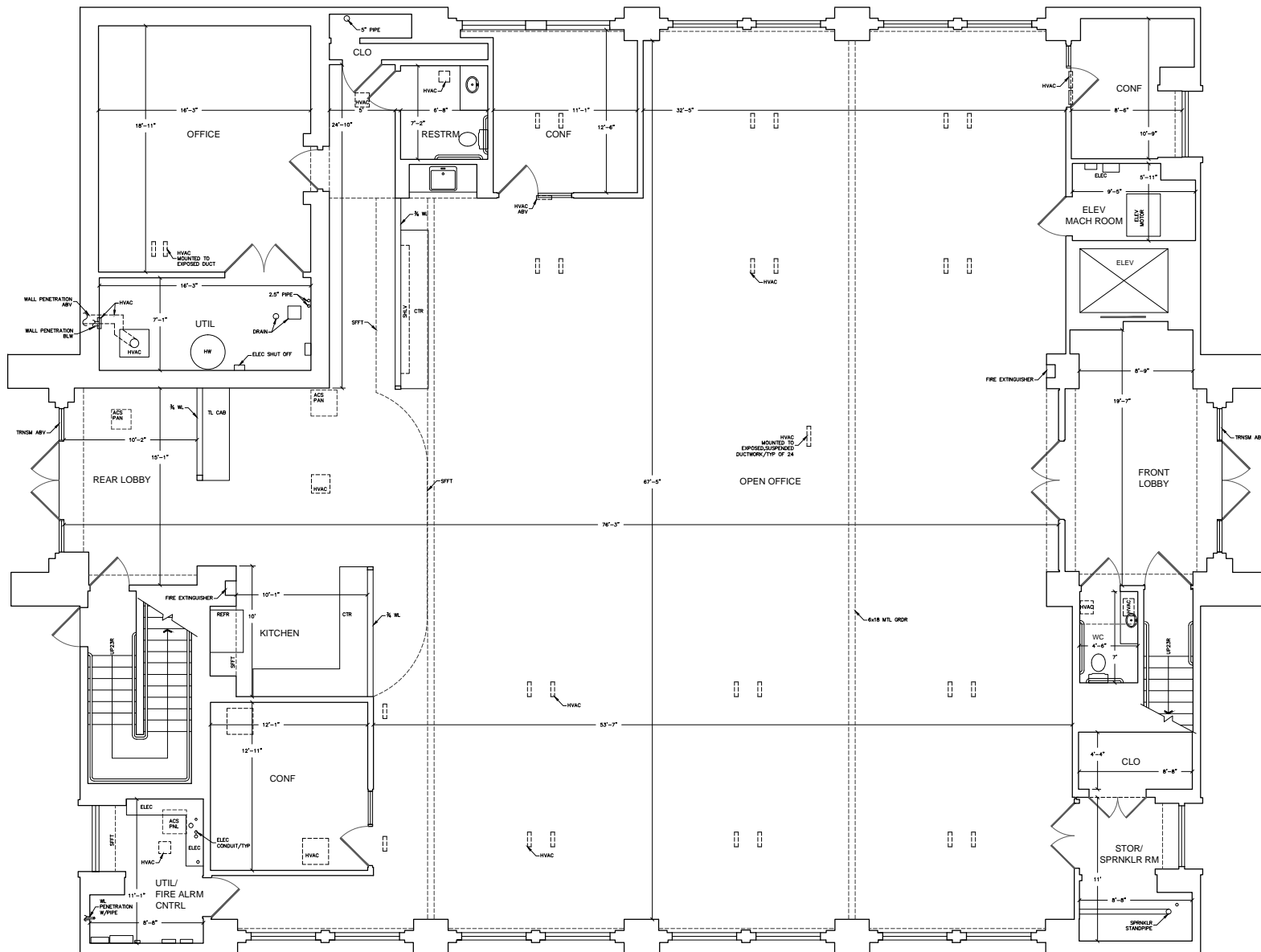
PROPERTY HIGHLIGHTS

- ▀ ±12,386 Sq. Ft. Building Divisible to ±6,193 Sq. Ft. on Each Floor
- ▀ Suitable for Office, Retail, or Medical Tenants
- ▀ Can Be Leased to One Tenant or Divided by Floor
- ▀ Expansive On-Site Parking Lot
- ▀ Abundant Natural Light
- ▀ Elevator Served
- ▀ Open Layout and Exposed Ceiling on Ground Floor
- ▀ Mix of Open Work Space and Meeting Rooms on Second Floor
- ▀ Kitchenette Areas & Restrooms on Both Floors
- ▀ Shower Room on Second Floor
- ▀ Excellent Signage Opportunities
- ▀ 3.00/1000 Parking Ratio
- ▀ Across the Street from the Village at San Antonio
- ▀ Walking Distance to Countless Restaurants & Amenities
- ▀ 0.5 Mi from CalTrain Station

554 SAN ANTONIO RD, MOUNTAIN VIEW, GA

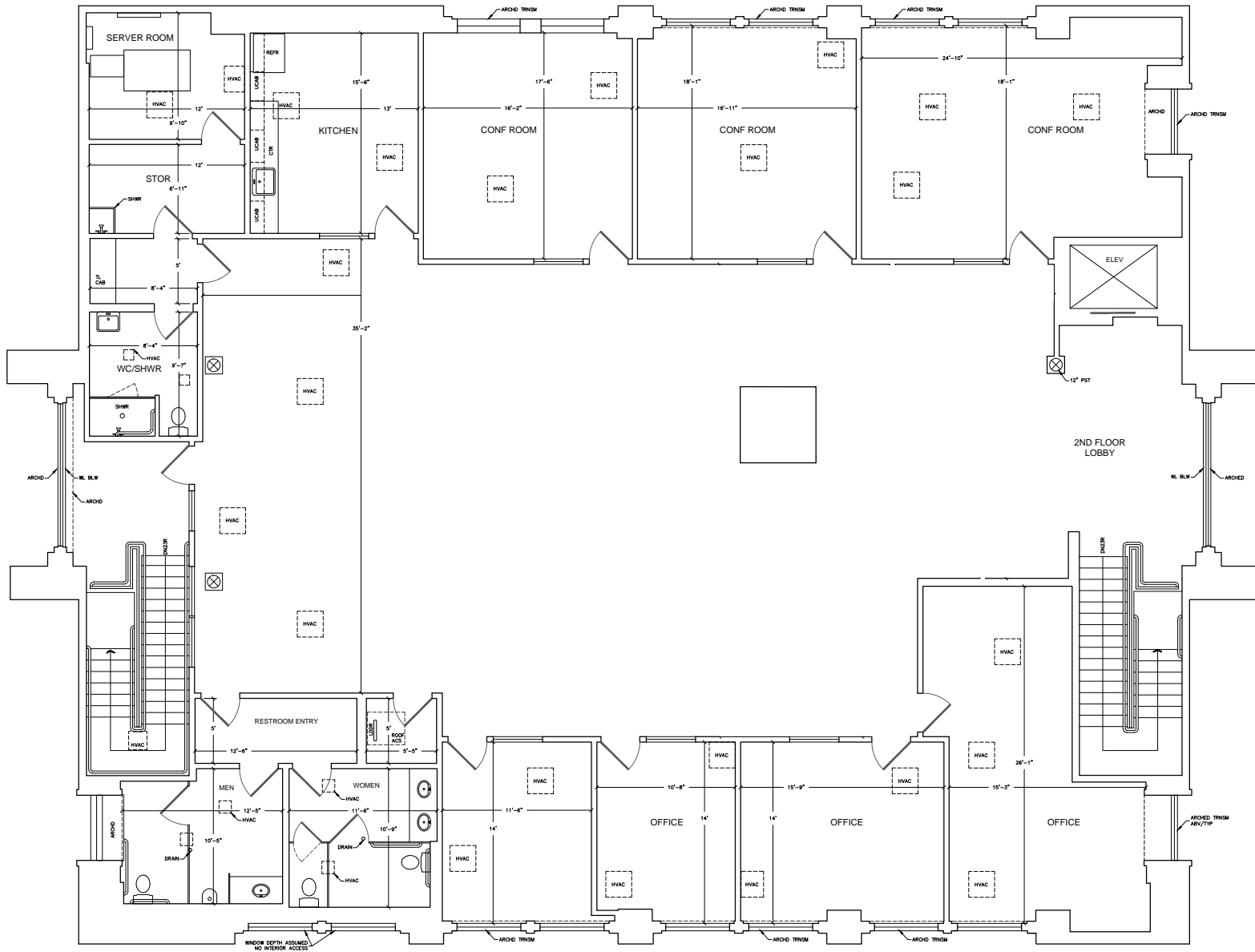
FIRST FLOOR PLAN

554 SAN ANTONIO RD, MOUNTAIN VIEW, GA



SECOND FLOOR PLAN

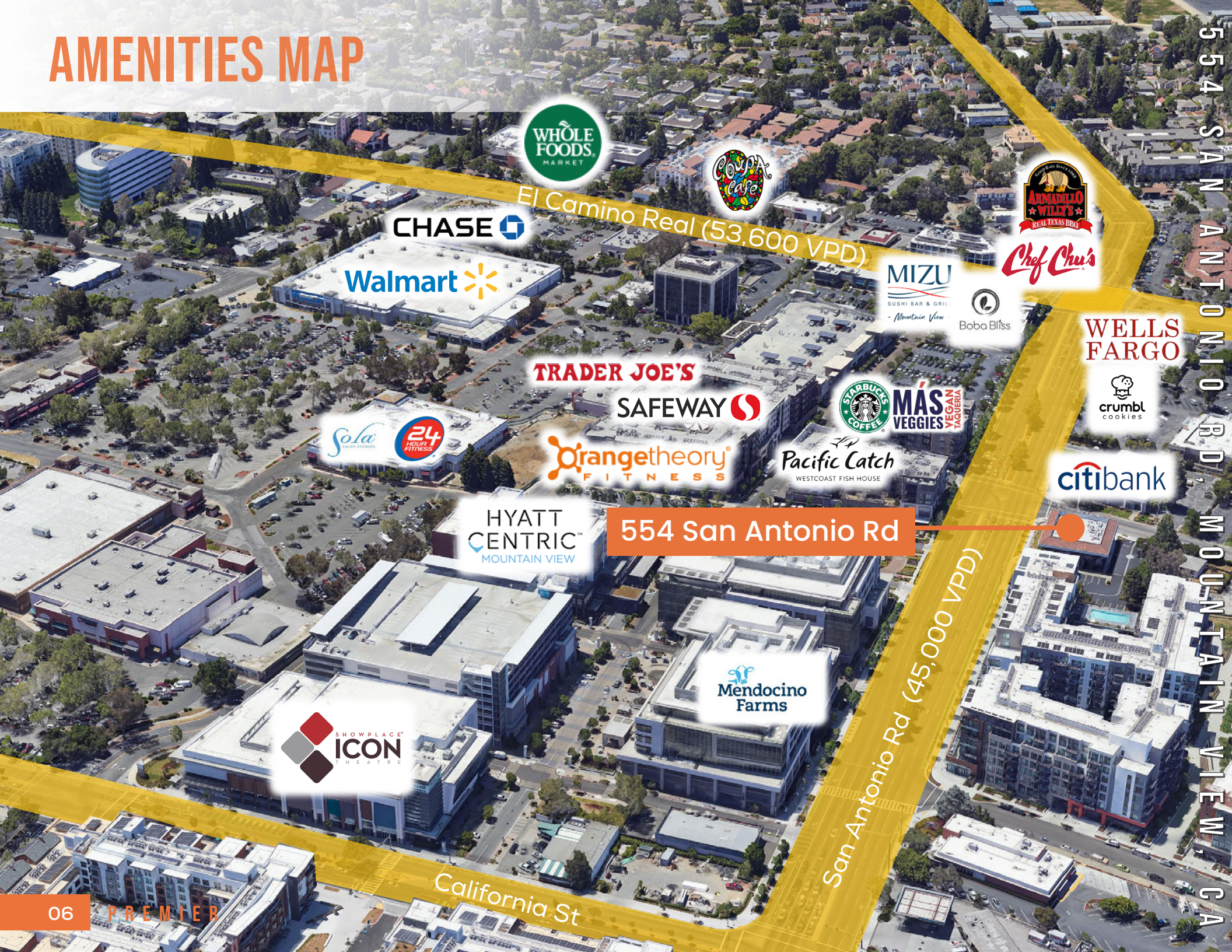
554 SAN ANTONIO RD, MOUNTAIN VIEW, GA





554 SAN ANTONIO RD,
MOUNTAIN VIEW,
GA

AMENITIES MAP



554 SAN ANTONIO RD, MOUNTAIN VIEW, CA



El Camino Real (53,600 VPD)



554 San Antonio Rd



San Antonio Rd (45,000 VPD)

California St

TRANSPORTATION MAP



✈️ PLANES

SJC - 12.6 miles
SFO - 23 miles
OAK - 39 miles

🚆 TRAINS

Milbrae - 55 min
San Jose - 59 min
San Francisco - 1 h 22 min

🚗 AUTOMOBILES

Downtown San Jose - 14.9 miles
Downtown Oakland - 37.6 miles
San Francisco - 54 miles

DEMOGRAPHICS



ONE-MILE POPULATION: 35,251

MEDIAN AGE

38.6

AVERAGE HOUSEHOLD SIZE



FAMILIES



FAMILIES

8,366



Average Household Income

\$218,313

Average Household Size: **2.4** | Owner Occupied Housing Units: **5,541** | Renter Occupied Housing Units: **9,334** | Median Household Income: **\$162,904** | Average Household Income: **\$218,313**

MAJOR EMPLOYERS:

Data for all businesses in area	1 mile
Total Businesses:	1,434
Total Employees:	13,912
Total Residential Population:	15,497
Per Capita Income	\$91,958

FOR LEASE

554 SAN ANTONIO RD, MOUNTAIN VIEW, CA

±6,193 - 12,386 SQ. FT. OFFICE / RETAIL / MEDICAL



**PREMIER
PROPERTIES**
COMMERCIAL
REAL ESTATE

BRAD EHIKIAN
Partner
dre license #01736391
| 650.618.3001
| brad.ehikian@prprop.com

JON GOLDMAN
Partner
dre license #01295503
| 650.618.3003
| jon.goldman@prprop.com

JESSE EBNER
Vice President
dre license #02055989
| 650.618.3017
| jesse.ebner@prprop.com