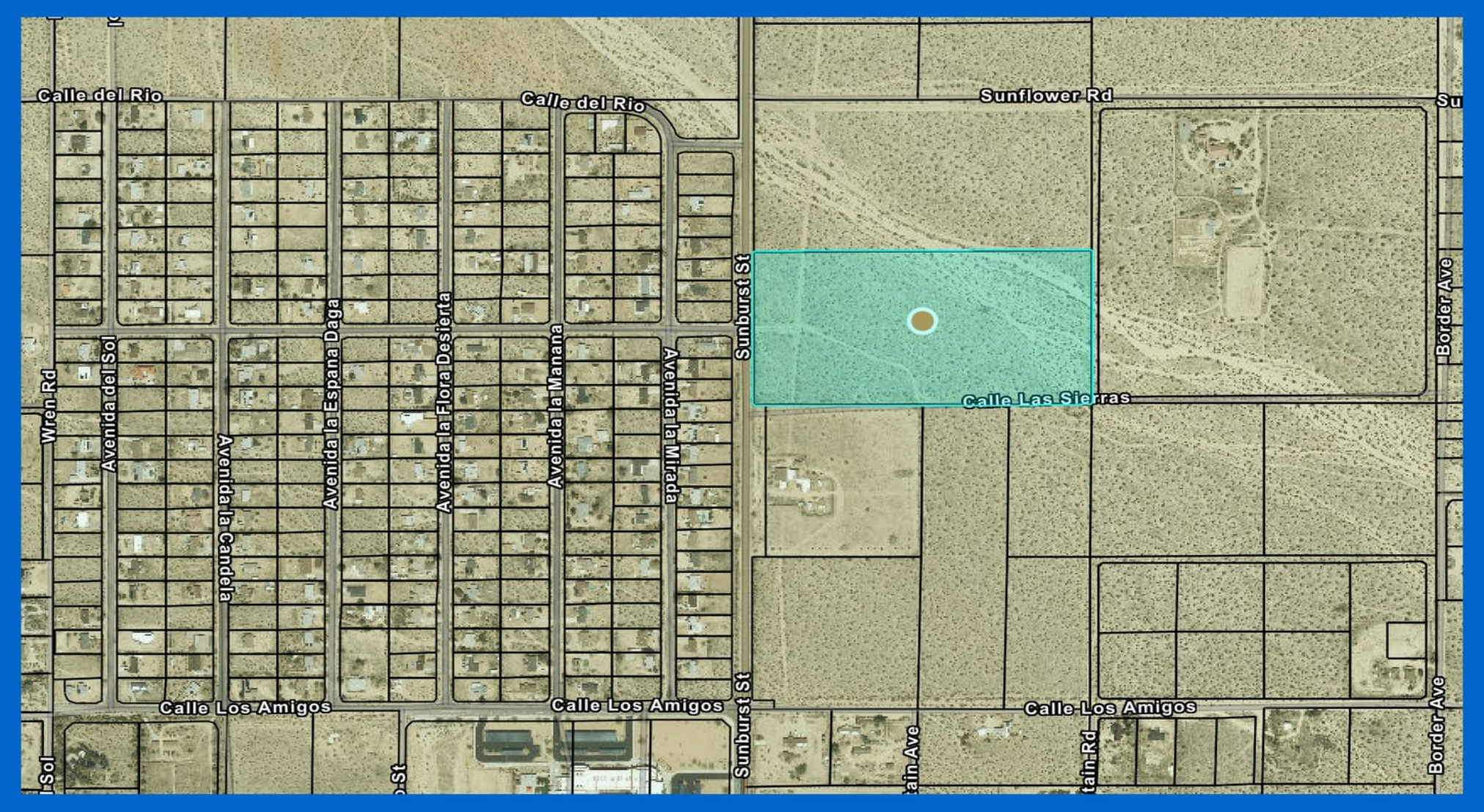


4649 Sunburst Street, Joshua Tree

±19.55 acres of vacant residential land

Presented By:
WESTMAC Commercial Brokerage Company

WESTMAC
Commercial Brokerage Company



4649 Sunburst Street, Joshua Tree, CA 92252

±19.55 acres of vacant residential land

Property Details

Utility records indicate water is shown on the parcel (buyer to verify) and electricity is located along Sunburst Street (buyer to verify service and distance). The location offers convenient access to local amenities, schools, and approx. 3 miles north of Hwy 62, Joshua Tree's primary commercial corridor.

Shops • Cafés • the Visitor Center • Gas Stations • Small Markets • the Weekly Farmers' Market

- ±19.55 acres of vacant land
- Parcel borders Sunburst Street
- Water indicated on the parcel (buyer to verify)
- Electricity along Sunburst Street (buyer to verify)
- Adjacent to established residential neighborhood

Location & Nearby Amenities

- Approx. 3 miles to Downtown Joshua Tree (Visitor Center / Park Blvd & Hwy 62)
- Approx. 5 miles to the Joshua Tree National Park West Entrance
- Approx. 3 miles to shops, restaurants, cafés, galleries, and the weekly farmers' market
- Approx. 3.5 miles to the Joshua Tree Post Office
- Approx. 2 miles to convenience stores and fuel stations on 29 Palms Hwy
- Approx. 4 miles to hardware/home-improvement stores (Yucca Valley area)
- Approx. 7–10 miles to full-service supermarkets (Stater Bros., Vons)
- Quick access to Hwy 62

Buyer to Do Their Own Due Diligence

Buyer to verify:

- Water availability
- Electrical service provider and connection options
- Zoning, permitted uses, and development requirements
- Septic feasibility
- Survey boundaries and legal description
- All San Bernardino County building, planning, and environmental requirements

[Price: \\$199,500.00](#)

Price:	\$199,500
Property Type:	Land
Property Subtype:	Residential
Proposed Use:	
Sale Type:	Investment or Owner User
Total Lot Size:	19.55 AC
No. Lots:	1
Zoning Description:	JT/RL
APN / Parcel ID:	0600-131-45

4649 Sunburst Street, Joshua Tree, CA 92252

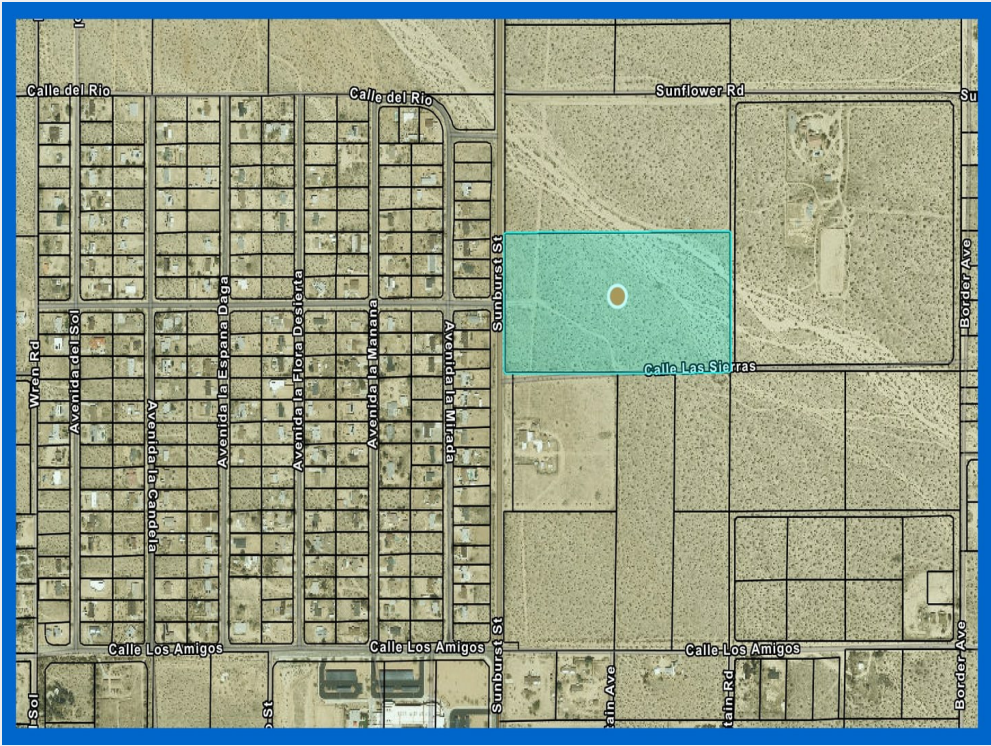
±19.55 acres of vacant residential land

Sunburst Street St & Calle Las Sierras South



4649 Sunburst Street, Joshua Tree, CA 92252

±19.55 acres of vacant residential land



APN: 0600-131-45-0000

M. SIGAL ASHLEY
Associate
ashley@westmac.com
310.966.4382
DRE #02114806

TOBIN M. MCANDREWS
Senior Vice President
mcandrews@westmac.com
310.966.4386
DRE #01416801

WESTMAC
Commercial Brokerage Company

©2025 WESTMAC Commercial Brokerage Company. All Rights Reserved. WESTMAC Commercial Brokerage fully supports the principles of the Equal Opportunity Act. WESTMAC Commercial Brokerage Company and the WESTMAC Commercial Brokerage Company logo are registered service marks owned by WESTMAC Commercial Brokerage Company and may not be reproduced by any means or in any form whatsoever without written permission.