

Office/Warehouse
+/- 1,125 Square Feet



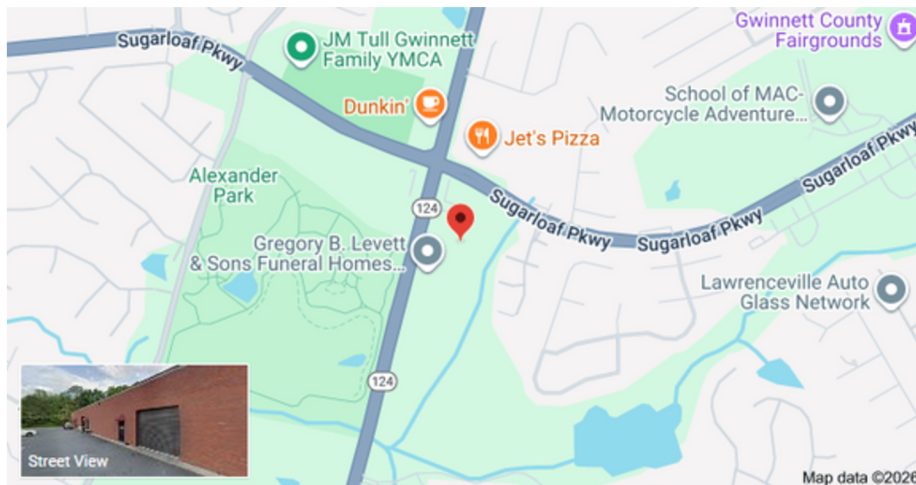
2784 SUGARLOAF PKWY, STE 103 | LAWRENCEVILLE, GA

Property Highlights:

- ±1,125 Sq Ft Office/Warehouse
- Two Private Offices
- One Restroom
- 12' x 12' Roll-Up Door
- Excellent signage and visibility with a strong daily traffic count
- Convenient access to Hwy 316, Hwy 78 & I-85
- Intersection of Sugarloaf Pkwy & Scenic Hwy
- Strong Surrounding Retail & Services
- 1 Mile from Gwinnett Fair Grounds

**FOR
LEASE!**

**\$1600/ MO.
RENT + CAM**



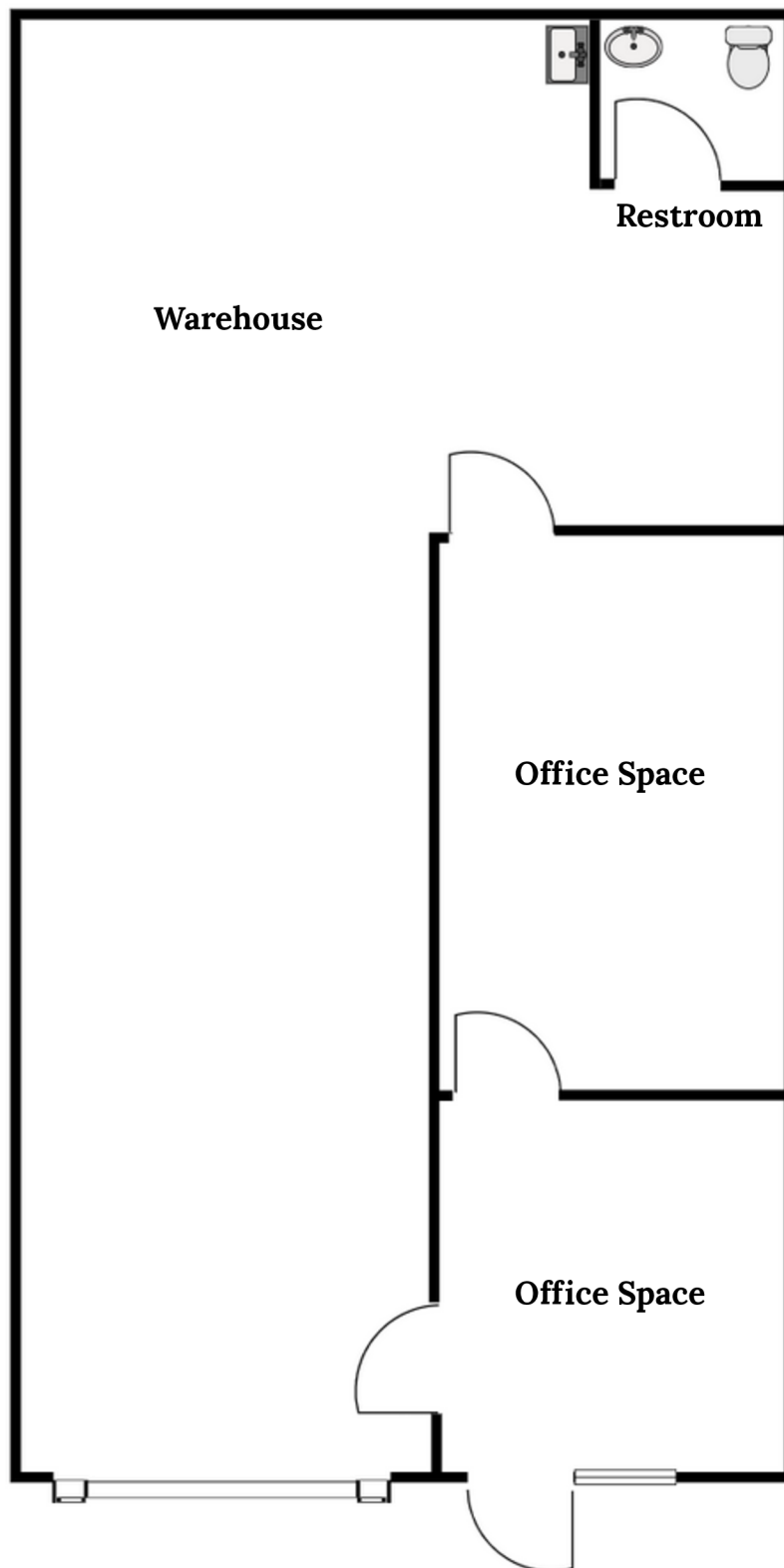
Schedule a Tour or Request Details Today:

Rebecca Davis, Summit Real Estate

rdavis@summitgeorgia.com

770-633-4370

Office/Warehouse
+/- 1,125 Square Feet



Floor plan is for illustrative purposes only and may not reflect actual conditions. All dimensions and details should be independently verified.



Schedule a Tour or Request Details Today:

Rebecca Davis, Summit Real Estate

rdavis@summitgeorgia.com

770-633-4370

Information is believed to be accurate at the time of publication and may change without notice.

Office/Warehouse
+/- 1,125 Square Feet



Floor plan and photos are for illustrative purposes only and may not reflect actual conditions. All details should be independently verified.



Schedule a Tour or Request Details Today:

Rebecca Davis, Summit Real Estate

rdavis@summitgeorgia.com

770-633-4370

Information is believed to be accurate at the time of publication and may change without notice.