

# 1430 MASSACHUSETTS AVENUE

HARVARD SQUARE | CAMBRIDGE, MA | OFFICE SPACE FOR LEASE



**1430 Massachusetts Avenue** – Located in the heart of Harvard Square, this historic building is uniquely positioned amongst the densest concentration of intellectual capital and largest biotech/laboratory organizations in the world. The building offers users a rare opportunity to position themselves amongst a wealth of local amenities and attractions while importantly taking advantage of a premier corner office space with an above-standard “Street to the Suite” experience.



4 UNIVERSITIES

**25,762** UNDERGRADUATES



**PROFESSIONALLY**  
MANAGED AND OWNED



NEW BUILDING ENTRY, LOBBY &  
**UPDATED ELEVATOR**



**CLOSE PROXIMITY**  
TO 6 PUBLIC PARKING LOTS/GARAGES  
& 497 STREET PARKING SPACES



**STEPS TO**  
MBTA'S RED LINE & BUS CONNECTIONS



**68 HOTELS**  
WITHIN A 3 MILE RADIUS



## WALKING DISTANCES

**1** min  
HARVARD SQUARE

**2** min  
71 & 73  
BUS STOP

**20** min  
CENTRAL SQUARE  
STATION

## DRIVING DISTANCES

**15** min  
LOGAN AIRPORT

**17** min  
STORROW  
DRIVE

**17** min  
I-93

**8** min  
I-90

WALKER'S PARADISE



98

BIKER'S PARADISE



98

EXCELLENT TRANSIT



99



## AVAILABILITY

3<sup>RD</sup> FLOOR  
2,037 SF

 LEASE TERM 1-5+ YEARS

 LEASE RATE NEGOTIABLE

 TIMING AVAILABLE IMMEDIATELY

## SPACE DETAILS/HIGHLIGHTS

---

 ABUNDANCE OF  
NATURAL LIGHT  
(3 SIDES OF WINDOWS)

 COLLABORATIVE  
LAYOUT WITH A  
MIX OF PRIVATE &  
OPEN ROOMS

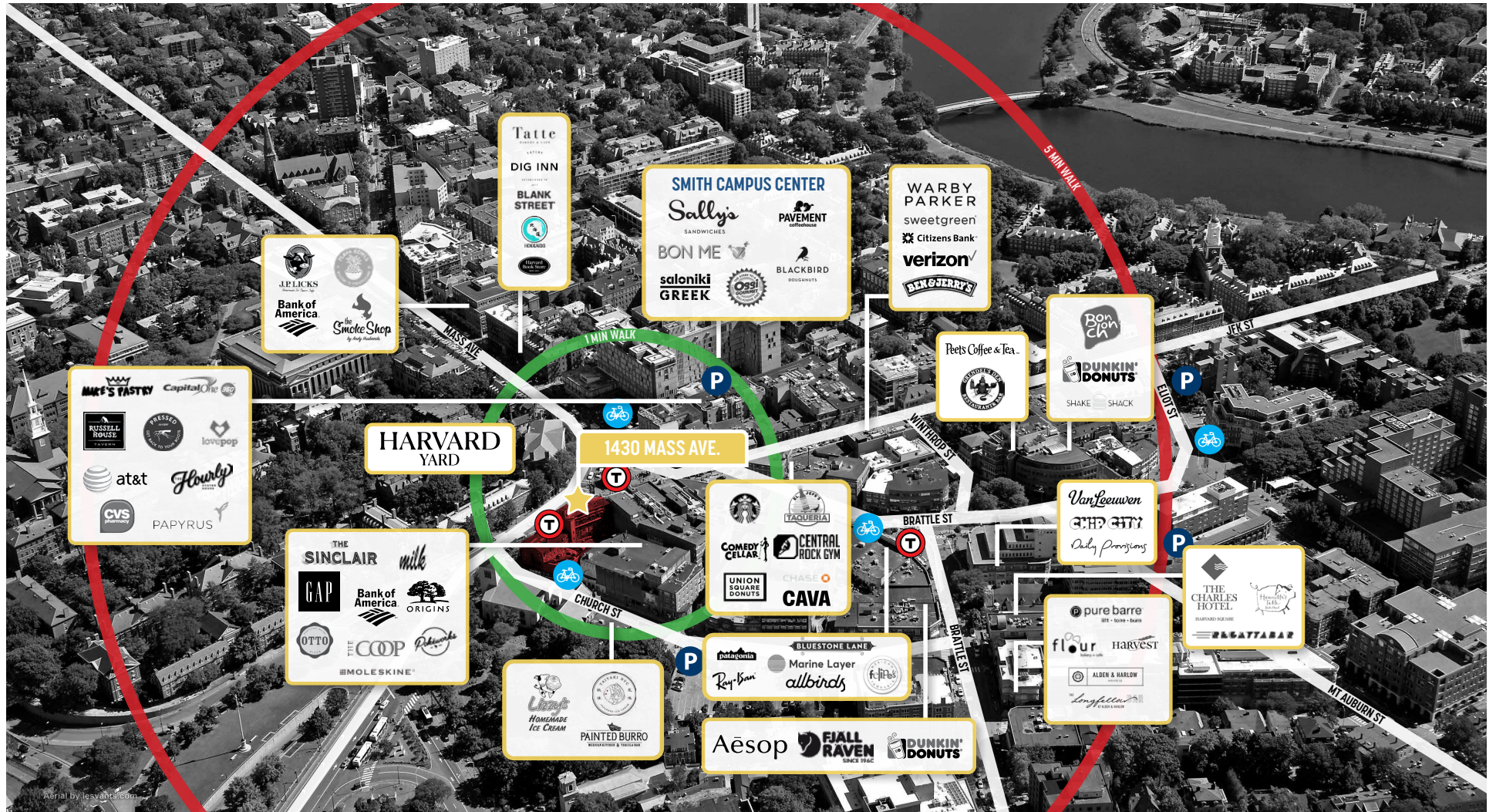
 JOIN INSTITUTIONAL  
QUALITY TENANTS,  
SUCH AS HARVARD

 UNOBSTRUCTED  
VIEWS  
OVERLOOKING  
HARVARD SQUARE

 24/7 ACCESS &  
HANDICAP  
ACCESSIBLE

 FLOOR TO CEILING  
EXPOSED BRICK

# NEIGHBORHOOD OVERVIEW

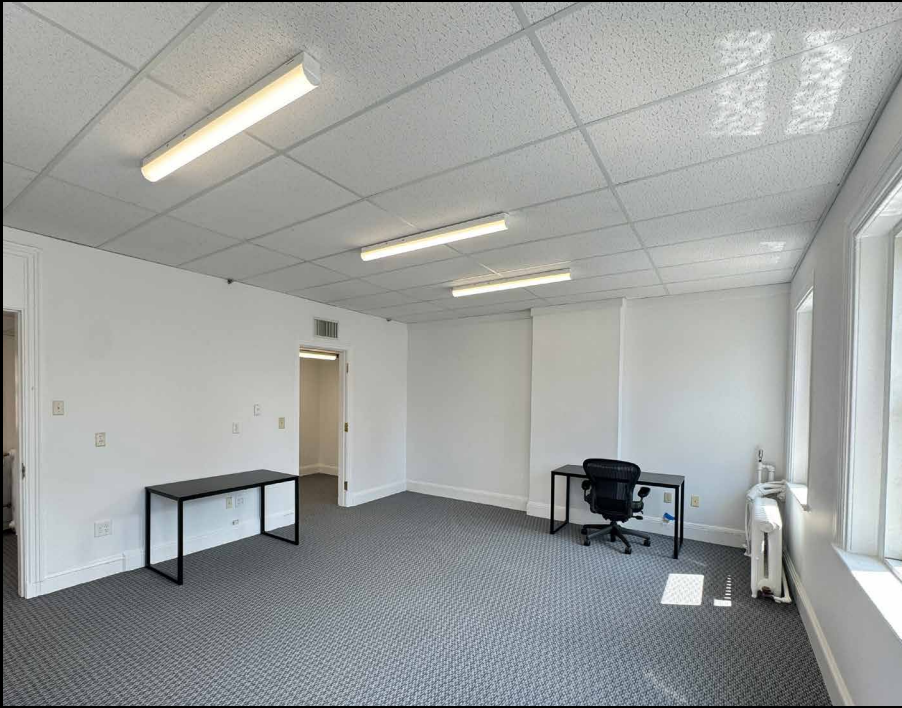


# HARVARD SQUARE



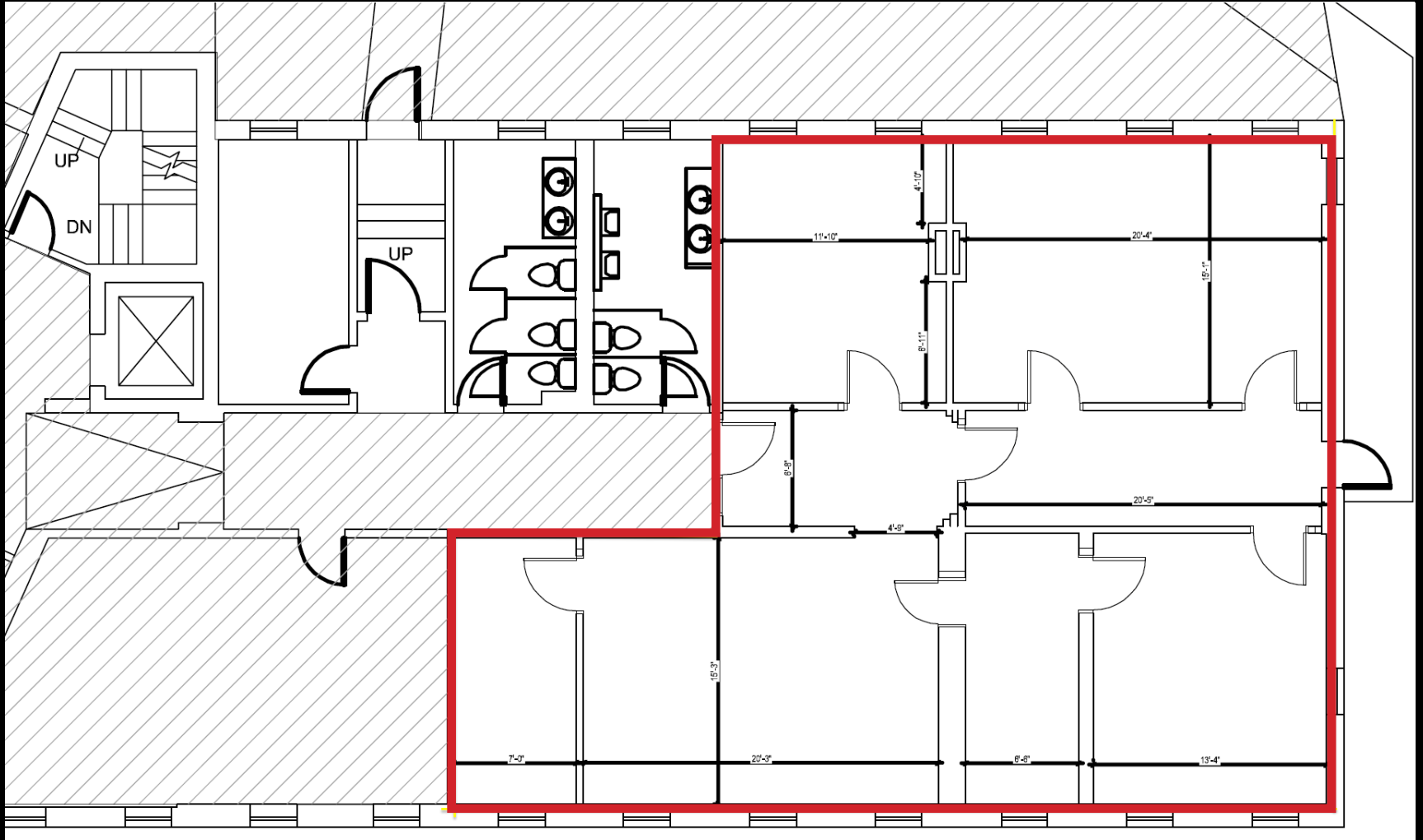
# 3RD FLOOR







# FLOOR PLAN

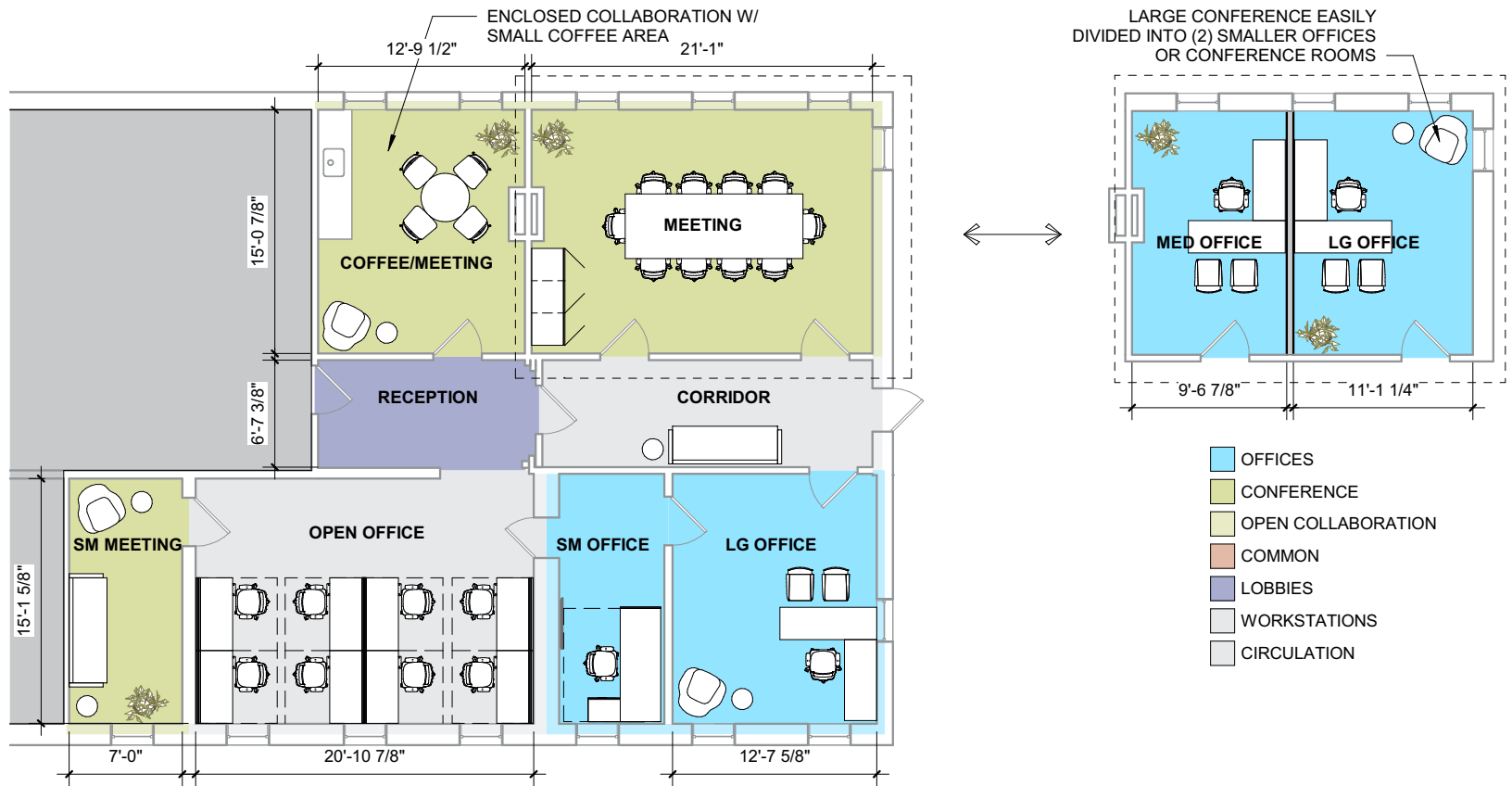


1430 MASSACHUSETTS AVE.

**THIRD FLOOR**

2,037 RSF

# CONCEPT FIT PLAN



1430 MASSACHUSETTS AVE.

**THIRD FLOOR**

2,037 RSF

# 1430 MASSACHUSETTS AVENUE

**JUSTIN D. HARLOW**

*Managing Director*

617.850.9613

[jharlow@bradvisors.com](mailto:jharlow@bradvisors.com)

**ROBERT F. LECLAIR**

*Managing Director & Partner*

617.850.9614

[rleclair@bradvisors.com](mailto:rleclair@bradvisors.com)



Boston Realty Advisors



136 Newbury Street | Boston, MA 02116 | 617.375.7900 | [BRAdvisors.com](http://BRAdvisors.com)

© Copyright Boston Realty Advisors. All rights reserved. The information contained here has been obtained through sources deemed reliable but cannot be guaranteed as to its accuracy. Any information of special interest should be obtained through independent verification.