

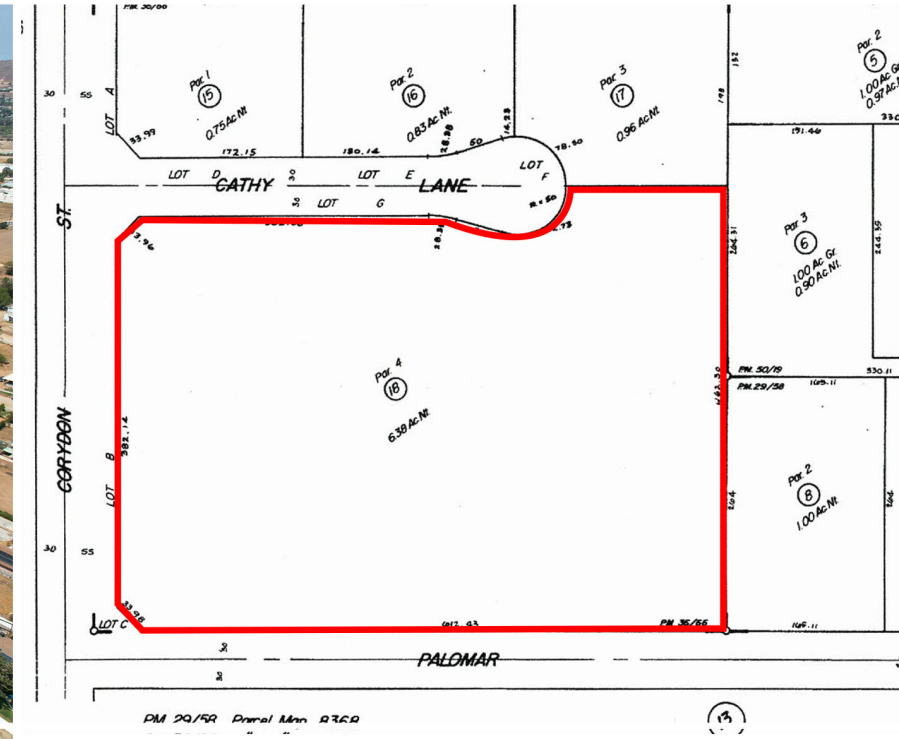
FOR SALE

NE CORNER CORYDON AND PALOMAR, WILDOMAR

6.38 Acres / 0 Corydon Wildomar, CA 92595

corcoran

GLOBAL LIVING



Approximately 6.38 acres located at the signalized intersection of Corydon Road and Palomar Street in the City of Wildomar. C-1/C-P Zoning and Business Park General Plan designation provides a wide range of options for development. The surrounding property has residential development and a city park. The I15 Freeway is approximately 2.5 miles. Corydon Road is the east/west corridor at the south end of Lake Elsinore. Traffic count is approximately 12,000 per day. (Costar data)

HIGHLIGHTS | PRICE: \$1,350,000

- 23472 Perry Street (AKA 4210 Patterson Ave)
- Electricity, Water, Sewer and Natural Gas Available
- C-1/C-P Zoning and Business Park / General Plan
- Lot Size 6.38 +/- Acre
- APN# 370-320-018

Information deemed reliable but not verified by broker. LIC# 01389481

Chris Johnson
REALTOR®

(951) 704-5020 cfj40305@gmail.com

© 2022 Corcoran Global Living. All rights reserved. Corcoran® and the Corcoran Logo are registered service marks owned by Corcoran Group LLC. Each franchise is independently owned and operated. Any services or products provided by independently owned and operated franchisees are not provided by, affiliated with or related to Corcoran Group LLC nor any of its affiliated companies. Corcoran Global Living fully supports the principles of the Fair Housing Act and the Equal Opportunity Act.