

# LAND FOR SALE

**1090 S HENRY STREET**  
Williamsburg, VA 23188



## PROPERTY DESCRIPTION

33+/- Acres of Land in the City of Williamsburg zoned RS-1, located along College Creek. Development possibility for residential use, and possible low impact commercial. One of the last large undeveloped parcels in The City of Williamsburg. Excellent for estate lots or high-end cluster residential community. Easy access to Route 199 and I64.

## PROPERTY HIGHLIGHTS

**- LARGE ACREAGE IN THE CITY OF WILLIAMSBURG**

## OFFERING SUMMARY

Sale Price:	\$1,800,000
Lot Size:	33 Acres

DEMOGRAPHICS	0.25 MILES	0.5 MILES	1 MILE
Total Households	137	440	1,470
Total Population	282	898	2,972
Average HH Income	\$156,681	\$145,218	\$139,680

**John Wilson**  
(757) 880-9085

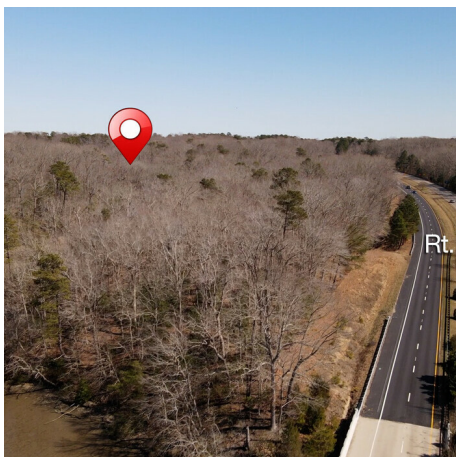
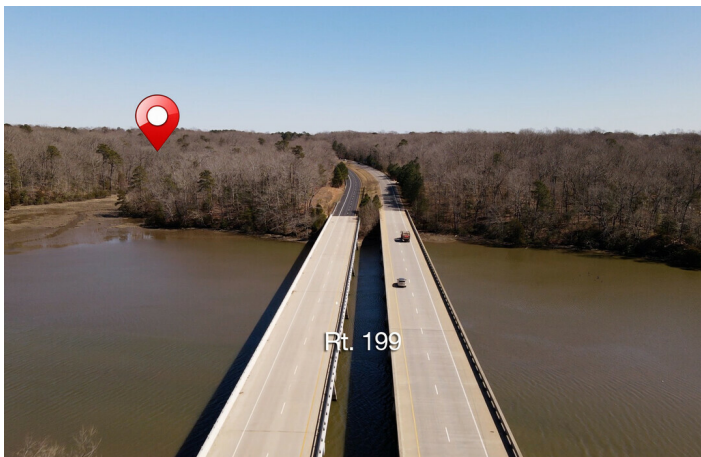
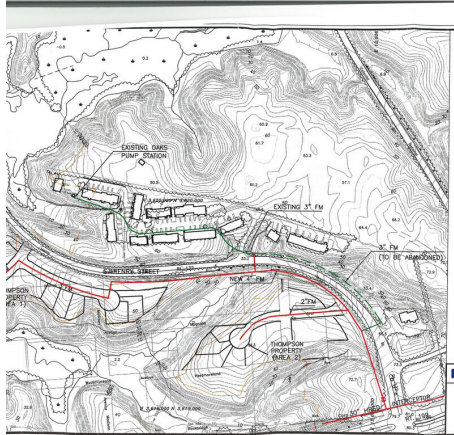
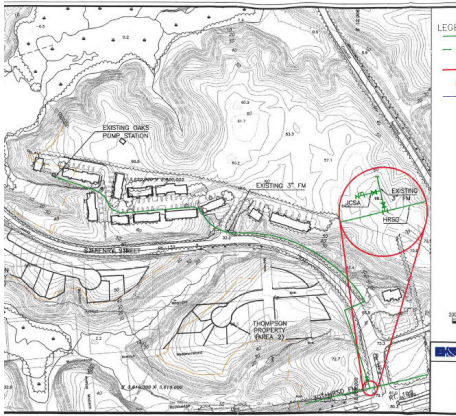


**COLDWELL BANKER  
COMMERCIAL**  
BROOKS REAL ESTATE



# LAND FOR SALE

1090 S HENRY STREET  
Williamsburg, VA 23188



**John Wilson**  
(757) 880-9085



**COLDWELL BANKER  
COMMERCIAL**  
BROOKS REAL ESTATE

# LAND FOR SALE

1090 S HENRY STREET

Williamsburg, VA 23188



**John Wilson**  
(757) 880-9085



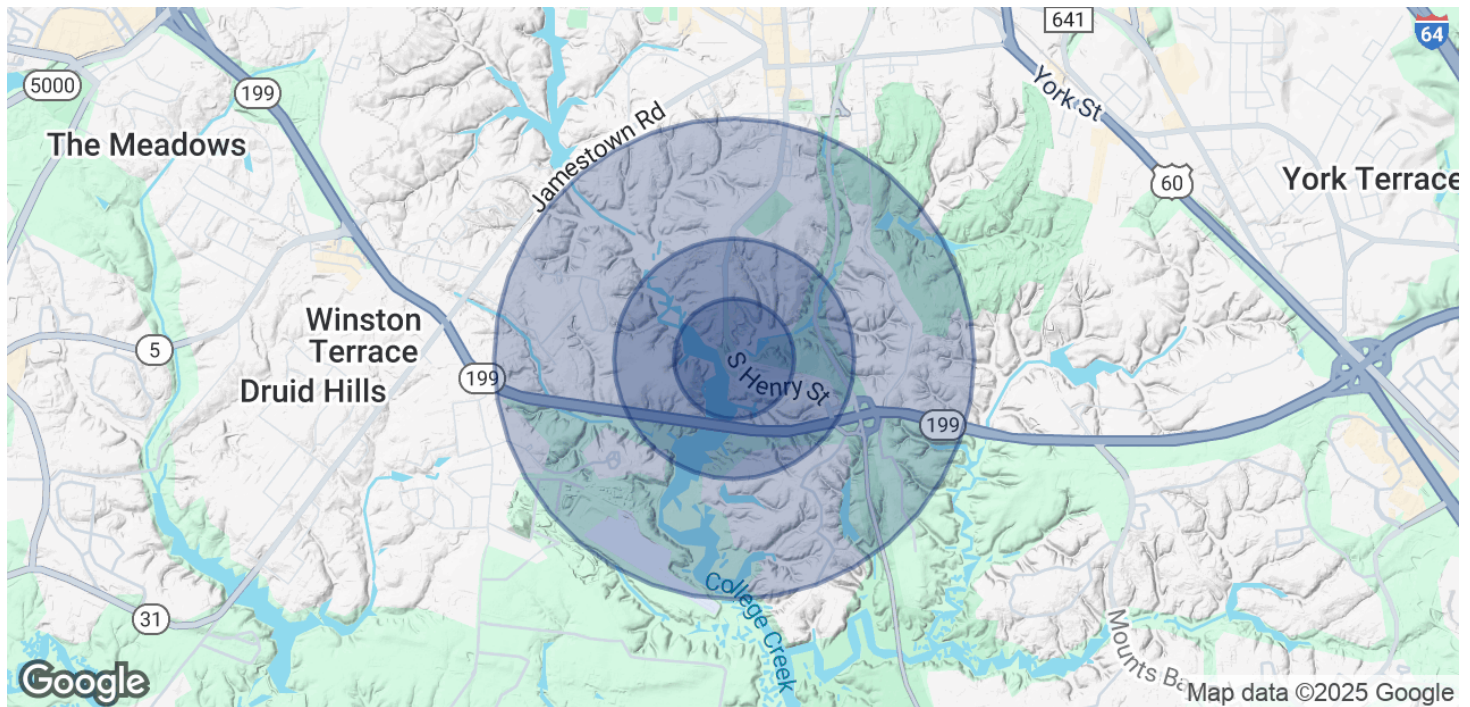
**COLDWELL BANKER**  
**COMMERCIAL**  
BROOKS REAL ESTATE



# LAND FOR SALE

1090 S HENRY STREET

Williamsburg, VA 23188



## POPULATION

	0.25 MILES	0.5 MILES	1 MILE
Total Population	282	898	2,972
Average Age	43.6	45.8	48

## HOUSEHOLDS & INCOME

	0.25 MILES	0.5 MILES	1 MILE
Total Households	137	440	1,470
# of Persons per HH	2.1	2	2
Average HH Income	\$156,681	\$145,218	\$139,680
Average House Value	\$515,552	\$495,676	\$492,432

2020 American Community Survey (ACS)

**John Wilson**  
(757) 880-9085



**COLDWELL BANKER  
COMMERCIAL**  
BROOKS REAL ESTATE