

3900-3950 CIVIC CENTER DRIVE

CLASS A OFFICE SPACE FOR LEASE



BRIAN FOSTER

+1 415 451 2437

brian.foster@cushwake.com

LIC #01393059

TREVOR BUCK

+1 415 451 2436

trevor.buck@cushwake.com

LIC #01255462



**CUSHMAN &
WAKEFIELD**

3900-3950 CIVIC CENTER DRIVE SAN RAFAEL, CA

Civic Center Plaza is a three story class “A” office building totaling approximately 93,296 square feet. Part of a two-building office plaza fronting Highway 101. The property offers convenient freeway access and numerous amenities nearby in the Terra Linda area and Northgate Shopping Mall.

AVAILABILITIES:

3950 CIVIC CENTER:

- Suite 230: $\pm 2,809$ SF
- Suite 310: $\pm 3,104$ SF
- Suite 320: $\pm 3,430$ SF

3900 CIVIC CENTER:

- Entire building available: $\pm 47,653$ SF
- 1st Floor: $\pm 15,601$ SF
- 2nd Floor: $\pm 15,668$ SF
- 3rd Floor: $\pm 16,384$ SF
- Move in ready with furniture in place
- Open ceiling, highly creative office space

PROPERTY DETAILS:

- Three-story Class “A” office building
- Parking: 3.4/1,000 SF
- \$3.50 PSF full service
- LEED Silver
- Across the street from SMART train
- Freeway visible signage available
- Highly improved creative office space
- Back up power generator





NORTHGATE ONE

Big 5 Sporting Goods
Walgreens
FedEx
Starbucks
Pet Food Express
Safeway
Round Table Pizza

Four Points by
Shearaton



Aarons Brothers
Michaels
CVS

NORTHGATE DR

NORTHGATE SHOPPING MALL

Restoration Hardware Outlet	Panda Express
Century Northgate	BJ's Restaurant
HomeGoods	Macy's
Kohl's	Chipotle
Panera Bread	Rite Aid



CIVIC CENTER DR

3900-3950
CIVIC CENTER



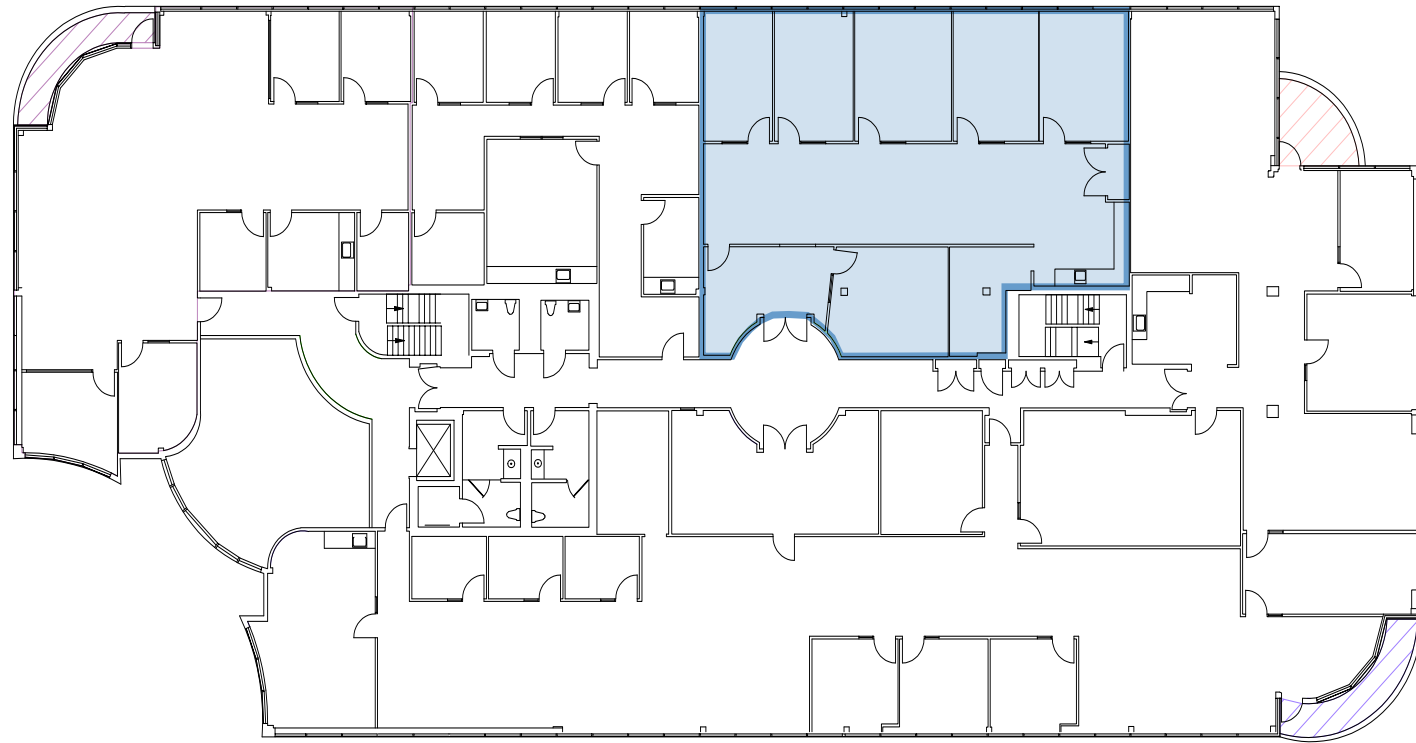
NEARBY AMENITIES

SUITE 230 ±2,809 SF

HIGHLIGHTS

- Mix of private offices and open area
- 5 private offices
- Conference room
- Kitchen
- Can be combined with suite 220 for a total of ±4,604 SF

2ND FLOOR



3950 CIVIC CENTER

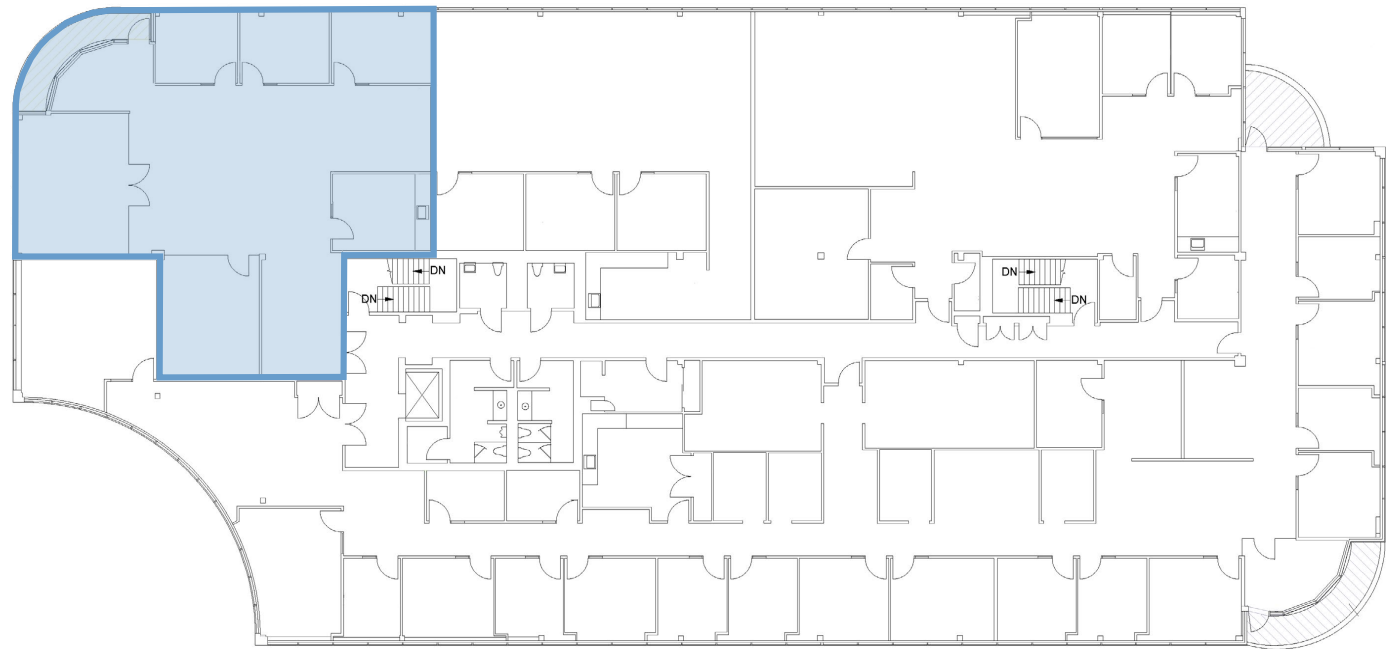
SUITE 310

±3,104 SF

HIGHLIGHTS

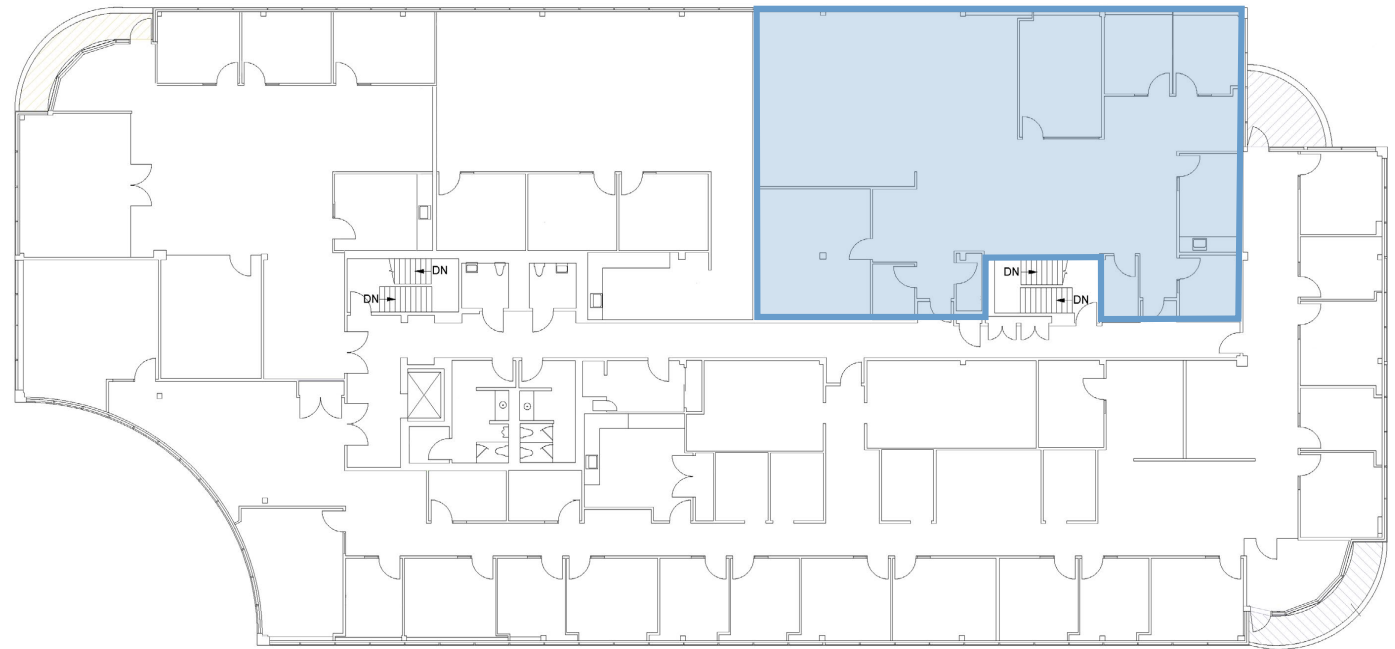
- 2 large glass conference rooms
- 3 private offices
- Open area for workstations
- Kitchen break area
- Deck

3RD FLOOR



3950 CIVIC CENTER

3RD FLOOR



SUITE 320
±3,430 SF

HIGHLIGHTS

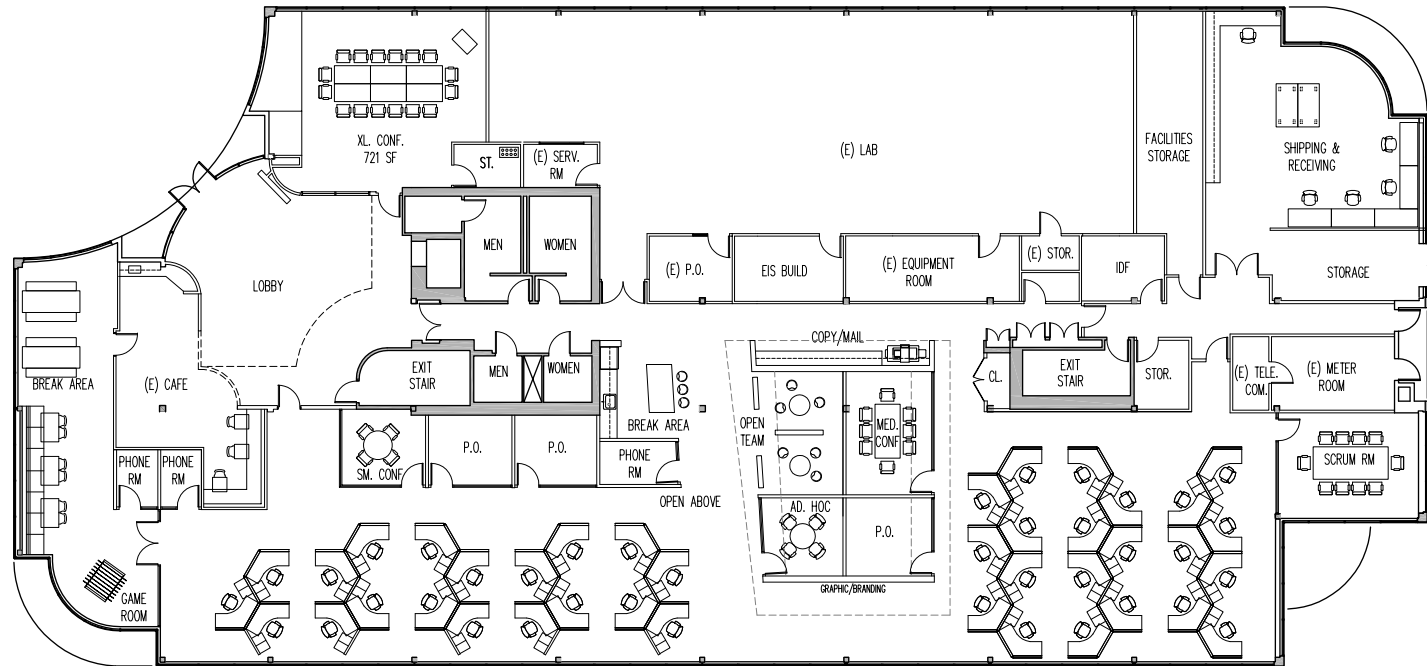
- Furniture in place
- Move-In ready

3950 CIVIC CENTER

1st FLOOR ±15,601 SF

HIGHLIGHTS

- Highly improved creative office space
- Open ceilings
- LED lights
- Polished concrete floors
- Back up generator

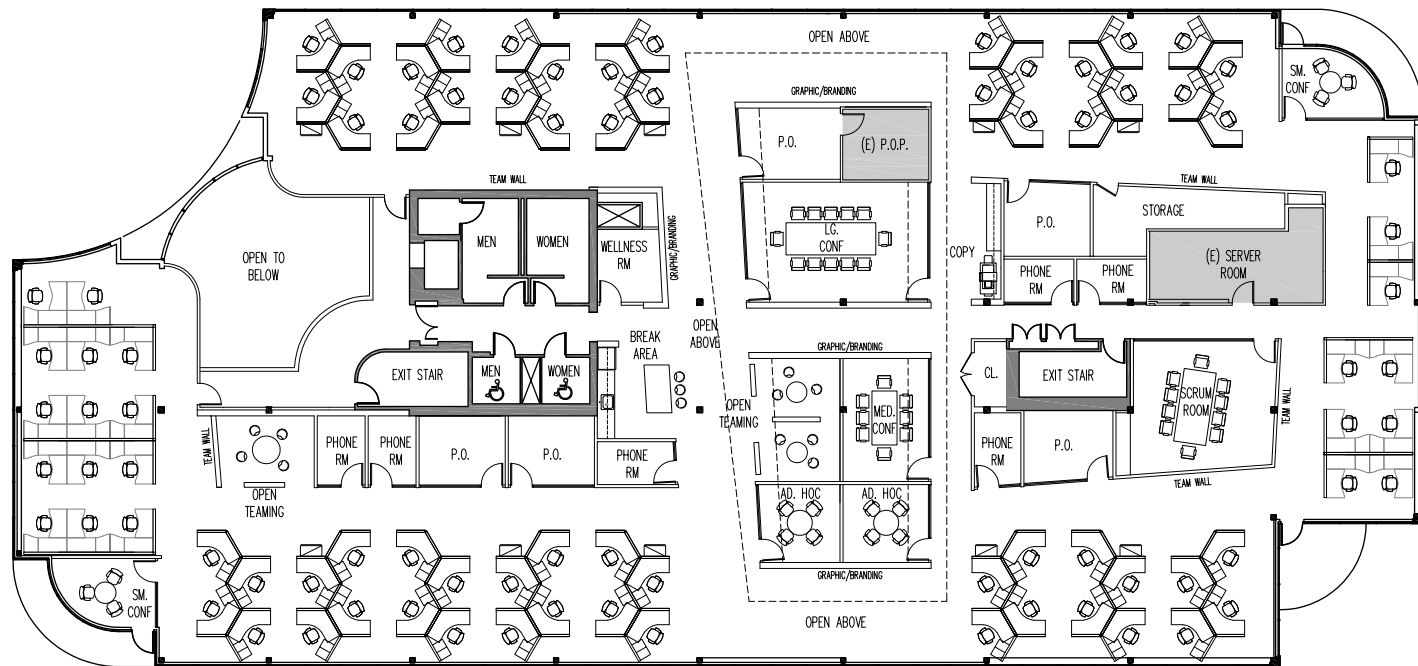


3900 CIVIC CENTER

2nd FLOOR ±15,668 SF (DIVISIBLE)

HIGHLIGHTS

- Highly improved creative office space
- Open ceilings
- LED lights
- Polished concrete floors
- Back up generator

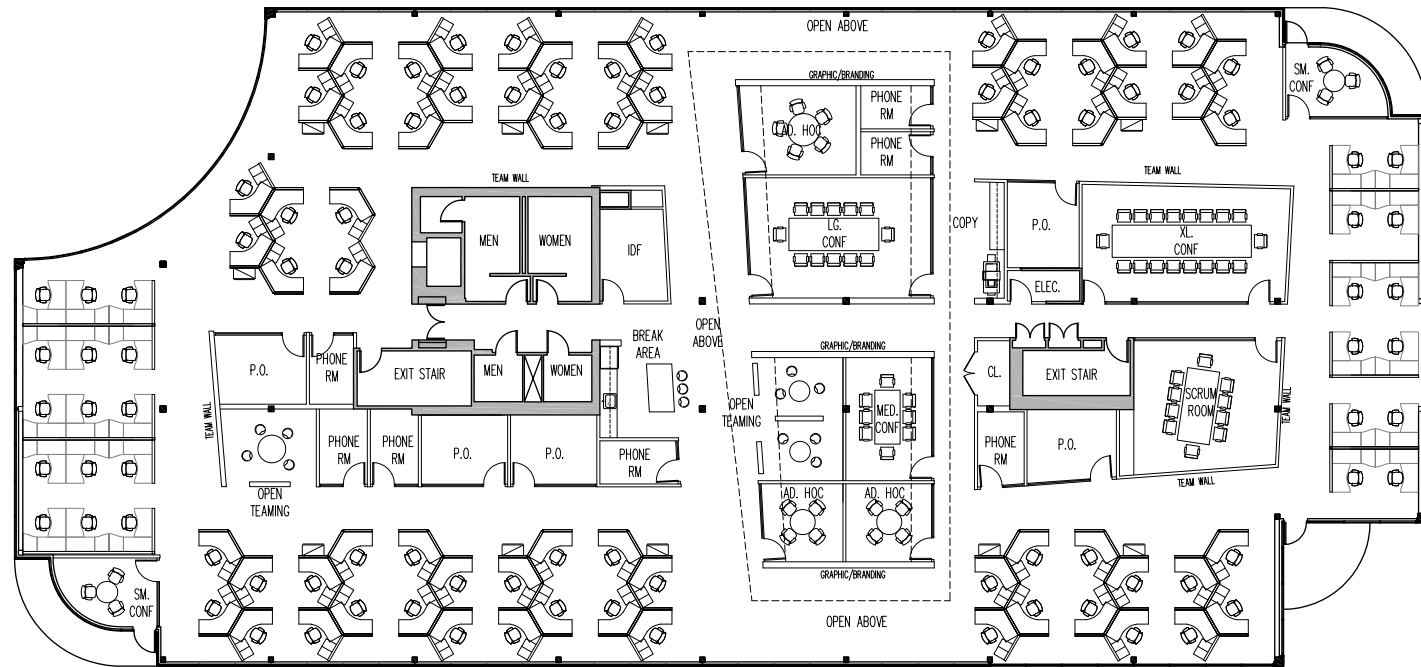


3900 CIVIC CENTER

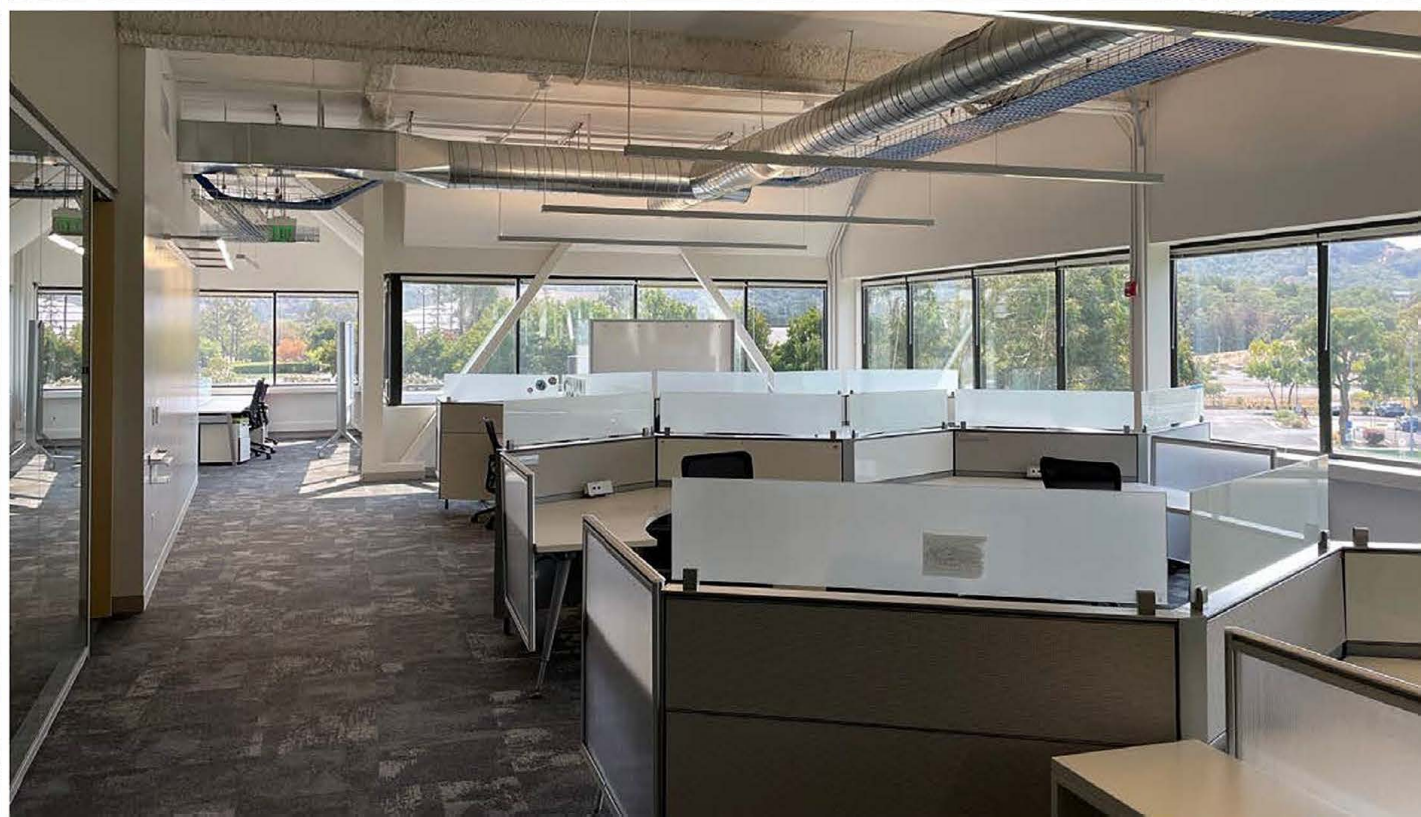
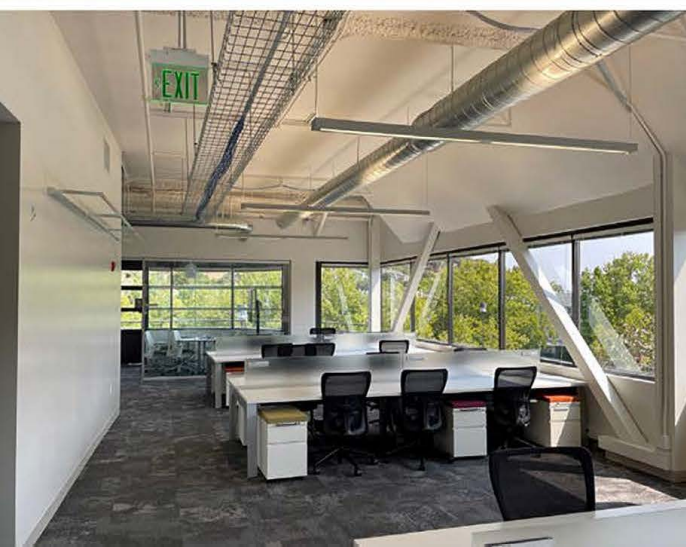
3RD FLOOR ±16,384 SF (DIVISIBLE)

HIGHLIGHTS

- Highly improved creative office space
- Open ceilings
- LED lights
- Polished concrete floors
- Back up generator



3900 CIVIC CENTER



3900-3950 CIVIC CENTER DRIVE

SAN RAFAEL, CA

BRIAN FOSTER

+1 415 451 2437

brian.foster@cushwake.com

LIC #01393059

TREVOR BUCK

+1 415 451 2436

trevor.buck@cushwake.com

LIC #01255462



**CUSHMAN &
WAKEFIELD**

©2025 Cushman & Wakefield. All rights reserved. The information contained in this communication is strictly confidential. This information has been obtained from sources believed to be reliable but has not been verified. NO WARRANTY OR REPRESENTATION, EXPRESS OR IMPLIED, IS MADE AS TO THE CONDITION OF THE PROPERTY (OR PROPERTIES) REFERENCED HEREIN OR AS TO THE ACCURACY OR COMPLETENESS OF THE INFORMATION CONTAINED HEREIN, AND SAME IS SUBMITTED SUBJECT TO ERRORS, OMISSIONS, CHANGE OF PRICE, RENTAL OR OTHER CONDITIONS, WITHDRAWAL WITHOUT NOTICE, AND TO ANY SPECIAL LISTING CONDITIONS IMPOSED BY THE PROPERTY OWNER(S). ANY PROJECTIONS, OPINIONS OR ESTIMATES ARE SUBJECT TO UNCERTAINTY AND DO NOT SIGNIFY CURRENT OR FUTURE PROPERTY PERFORMANCE. COE-PM-West-12.16.2021