

# 49700-49730 WOODWARD AVE

PONTIAC, MI

7,000 - 9,070 - 19,000 SF  
TWO BUILDING PORTFOLIO  
FOR LEASE

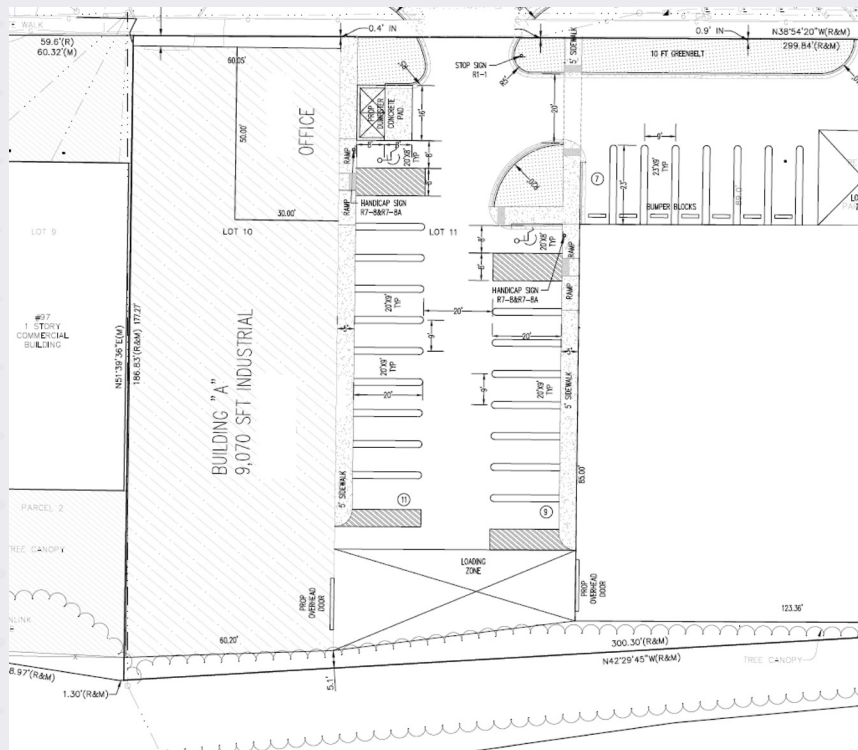
**MATT OSIECKI**  
First Vice President

+1 248 351 2079  
matt.osiecki@cbre.com

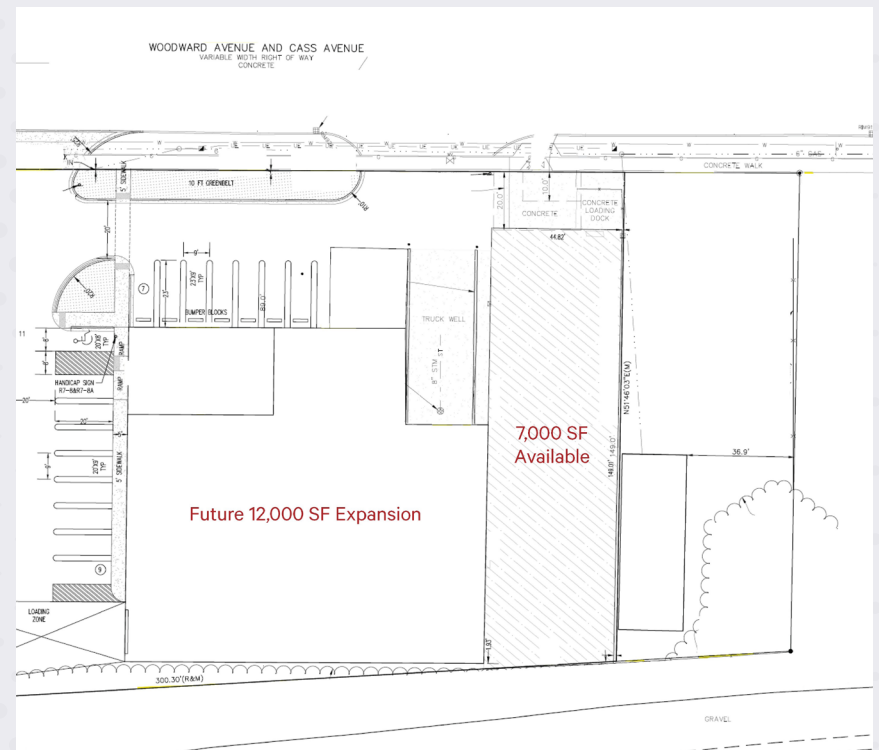
**JOE KEMP**  
Vice President

+1 248 936 6892  
joe.kemp@cbre.com

**CBRE**



49700 WOODWARD AVE



49730 WOODWARD AVE

## PROPERTY OVERVIEW

## 49700 - 49730 Woodward Ave

New construction on Woodward Ave in Downtown Pontiac. Two commercial spaces available for lease in 2026.

Join Oakland County and their 700 employees coming to Pontiac. The zoning allows for a variety of uses including industrial and commercial.

Modern amenities such as LED lights, large overhead doors, and high ceilings.

## NEW CONSTRUCTION WITH 300' OF WOODWARD AVE FRONTAGE

**EXPANDABLE UP  
TO 28,000 SF**

# BUILDING SPECIFICATIONS

- + New Construction
- + Main Road Visibility
- + Rental Rate is for Base Building with Standard Finishes
- + Clear Span Warehouse

## 49700 WOODWARD AVE

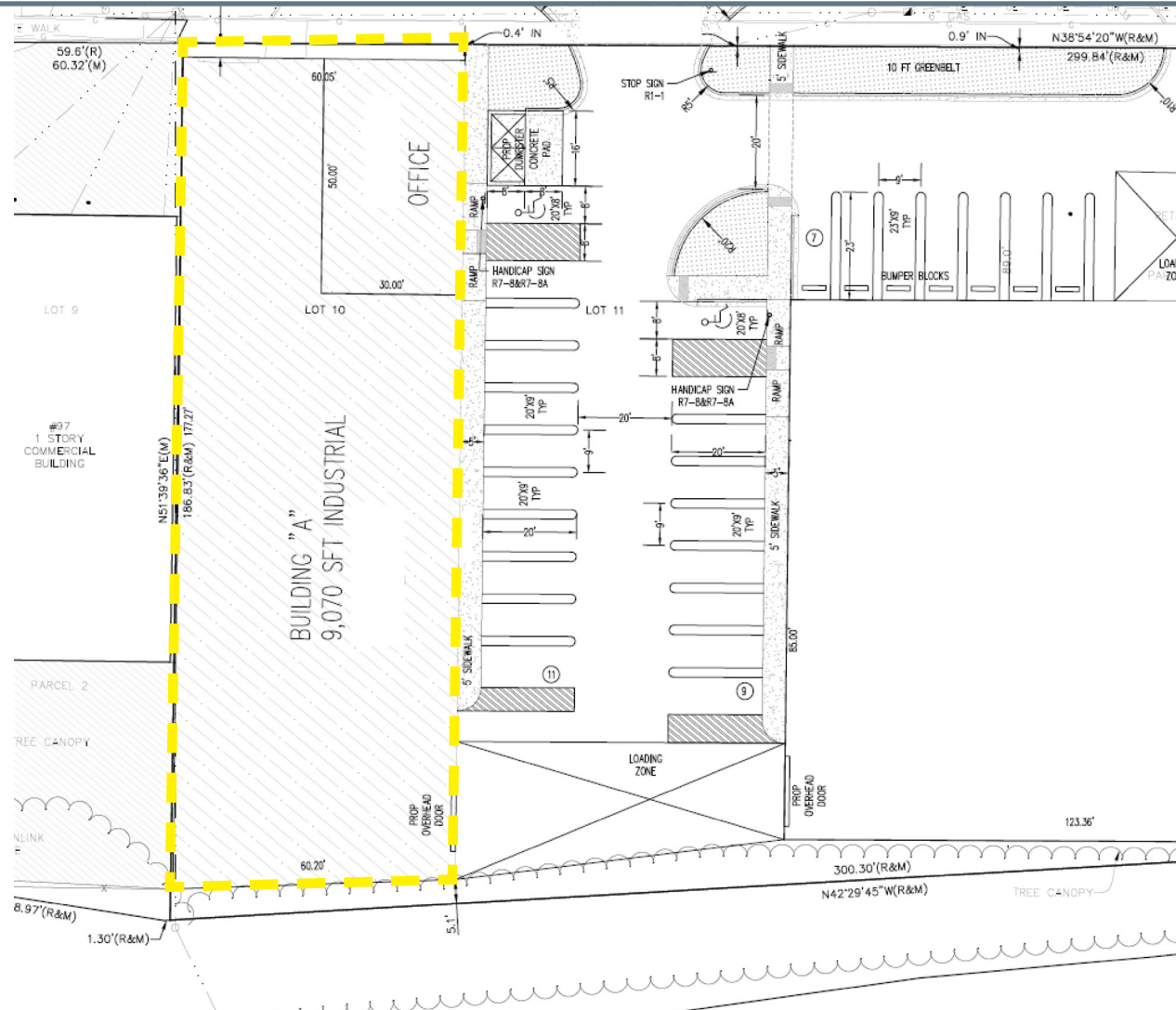
Spec Type	Spec Details
SF Available:	9,070 SF
Office SF:	To Suit
Grade Level Doors:	Three (3) One (1) 18' 6" x 14' One (1) 14' 6" x 14' One (1) 14' x 12'
Clear Height:	18'
Zoning:	C-3 Corridor Commercial Allows Light Industrial
Parking:	20+ Spaces
Lighting:	LED
Power:	1,000 amps
Availability:	Q1 2026
Lease Rate:	\$9.95/SF NNN

## 49730 WOODWARD AVE

Spec Type	Spec Details
SF Available:	7,000 SF Expansion up to 19,000 SF
Office SF:	To Suit
Grade Level Doors:	One (1)
Truckwells:	Two (2) Exterior
Clear Height:	18'
Zoning:	C-3 Corridor Commercial Allows Light Industrial
Parking:	20+ Spaces
Lighting:	LED
Power:	800 amps
Availability:	Q1 2026
Lease Rate:	\$9.95/SF NNN



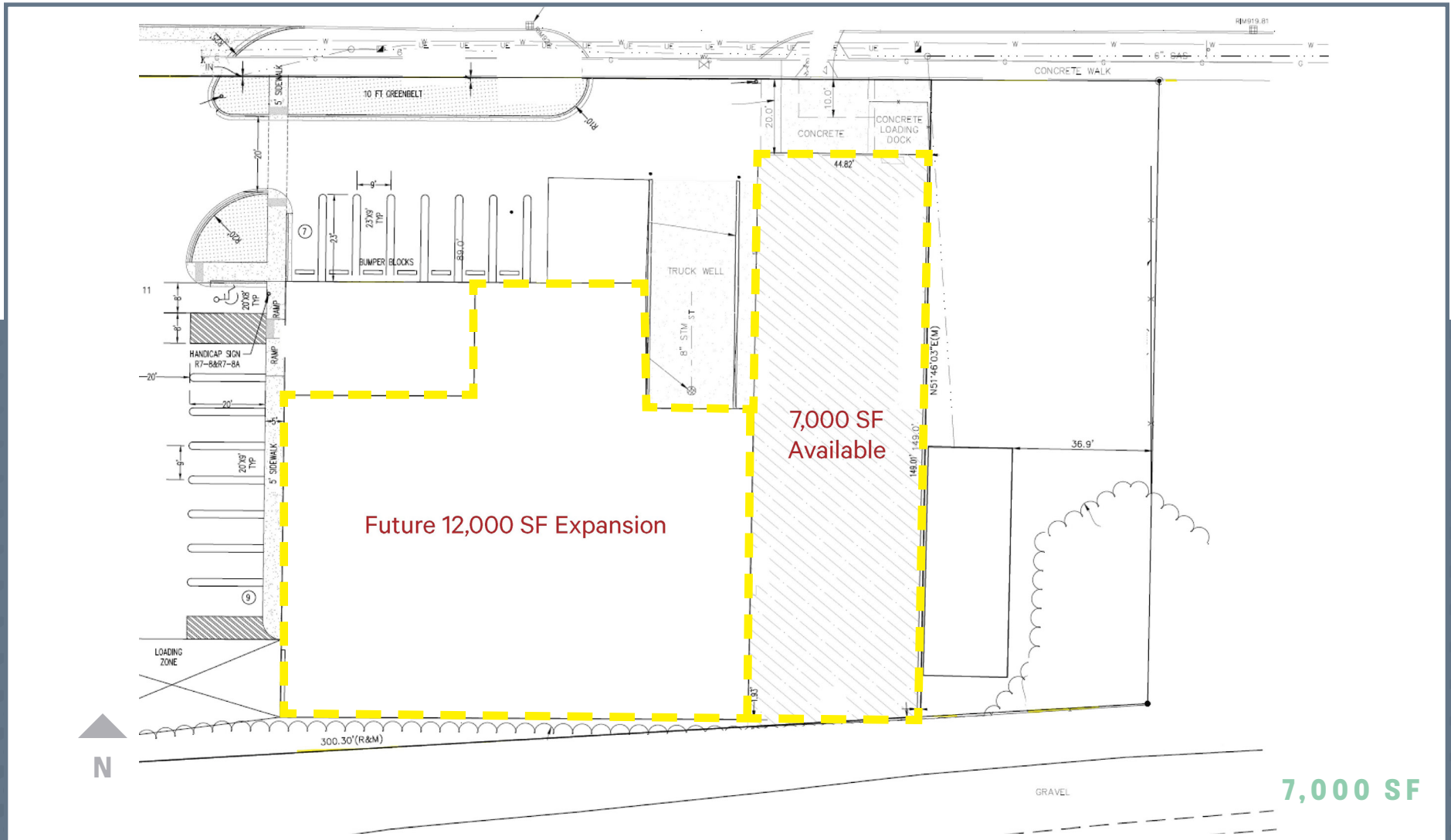
# 49700 Woodward Ave



9,070 SF

# FLOOR PLAN

49730 Woodward Ave





# AERIAL MAP



5,526 VPD



560 VPD



25,154 VPD



15,262 VPD



24,845 VPD

Norton St

Woodward Ave

Feneley Ct

Carter St

Woodward Ave

Norton St

Porter St

State St

W Huron St

N



**7,000 SF - 9,070 - 19,000 SF**  
**TWO BUILDING PORTFOLIO**  
**FOR LEASE**

# **49700-49730**

## **WOODWARD AVE**

**PONTIAC, MI**

---

**MATT OSIECKI**  
First Vice President

+1 248 351 2079  
[matt.osiecki@cbre.com](mailto:matt.osiecki@cbre.com)

**JOE KEMP**  
Vice President

+1 248 936 6892  
[joe.kemp@cbre.com](mailto:joe.kemp@cbre.com)

**CBRE**

© 2025 CBRE, Inc. All rights reserved. This information has been obtained from sources believed reliable but has not been verified for accuracy or completeness. CBRE, Inc. makes no guarantee, representation or warranty and accepts no responsibility or liability as to the accuracy, completeness, or reliability of the information contained herein. You should conduct a careful, independent investigation of the property and verify all information. Any reliance on this information is solely at your own risk. CBRE and the CBRE logo are service marks of CBRE, Inc. All other marks displayed on this document are the property of their respective owners, and the use of such marks does not imply any affiliation with or endorsement of CBRE. Photos herein are the property of their respective owners. Use of these images without the express written consent of the owner is prohibited.