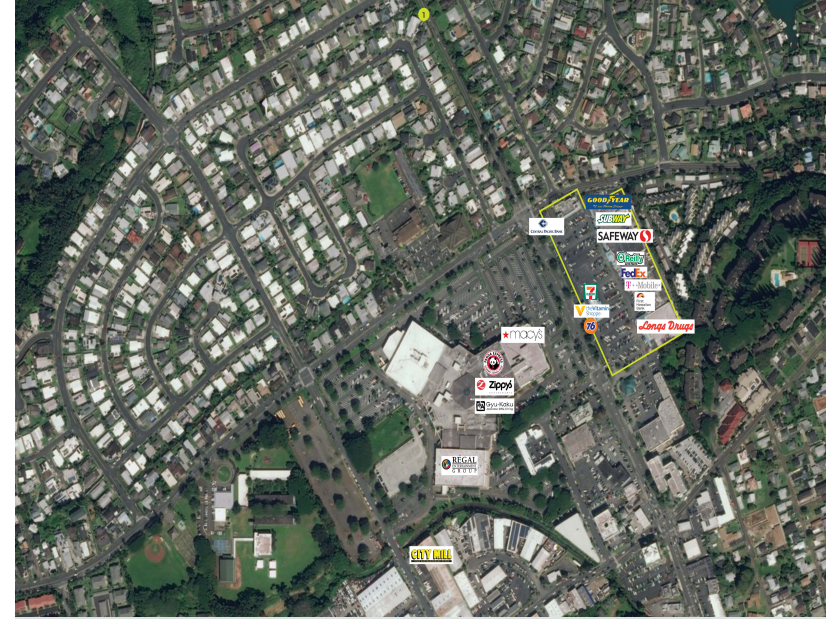


# KANEOHE BAY SHOPPING CENTER

46-O47 Kamehameha Highway, Kaneohe, HI, 96744



## PROPERTY

Grocery/drug anchored neighborhood shopping center located on Oahu's windward side. Anchored by Safeway and Longs, this friendly open-air neighborhood center is easily accessible for frequent area residents. Located just across from Windward Mall, the only enclosed regional mall on the windward side.

## CENTER SIZE

125,400 SF

## 2018 DEMOGRAPHICS

	1-Mile	3-Mile	5-Mile
Estimated Population	18,121	51,629	96,598
2021 Projected Population	18,121	51,629	96,598
Total Households	5,887	16,106	29,359
Average Household Income	\$108,664	\$120,027	\$121,385
Daytime Population	14,900	35,717	76,351
Median Age	41	43	38
Bachelor Degree or Higher	34%	38%	40%



ALEXANDER & BALDWIN

822 Bishop Street, Honolulu, HI 96813 | [www.alexanderbaldwin.com](http://www.alexanderbaldwin.com)

Leasing: **Aja M. S. Shimamura (S)** (808) 525-6662 | [ashimamura@abhi.com](mailto:ashimamura@abhi.com)



# KANEOHE BAY SHOPPING CENTER

46-O47 Kamehameha Highway, Kaneohe, HI, 96744



Kamehameha Highway



ALEXANDER & BALDWIN

822 Bishop Street, Honolulu, HI 96813 | www.alexanderbaldwin.com

Leasing: Aja M. S. Shimamura (S) (808) 525-6662 | ashimamura@abhi.com



# KANEOHE BAY SHOPPING CENTER

46-O47 Kamehameha Highway, Kaneohe, HI, 96744

## AVAILABLE SPACES

SPACE	SF
No Availabilities	

All information is subject to change without notice. Dimensions, configurations, and frontages are approximate and any measurements are estimates. No promise is made that the spaces, common areas, amenities, landscaping, or features depicted are or will be built, or if built will be as shown. Landlord makes no representations about specific tenants or where they may operate. Unless Landlord signs a binding lease for a specific space, you do not have a right to lease any space. No content from these pages may be copied, republished, or distributed in any way without Landlord's written consent. Despite Landlord's efforts to provide accurate information, it is not possible to ensure it is always up to date, and Landlord assumes no responsibility for any actions taken in reliance on this information.

