



SITE

Industrial For Sale

Asking Price:
\$990,000 each
(\$137.50/SF)

Contact:

Don L. Enlow, SIOR
Executive Vice President
+1 801 947 8388
don.enlow@colliers.com

Howard Layton, CCIM, MAI
Principal Broker
+1 801 947 8346
howard.layton@colliers.com

Marcy Pitman
Associate Broker
+1 801 947 8330
marcy.pitman@colliers.com

Colliers
6440 S. Millrock Dr., Suite 500
Salt Lake City, UT 84121
Main: +1 801 947 8300
colliers.com

Hangar Buildings

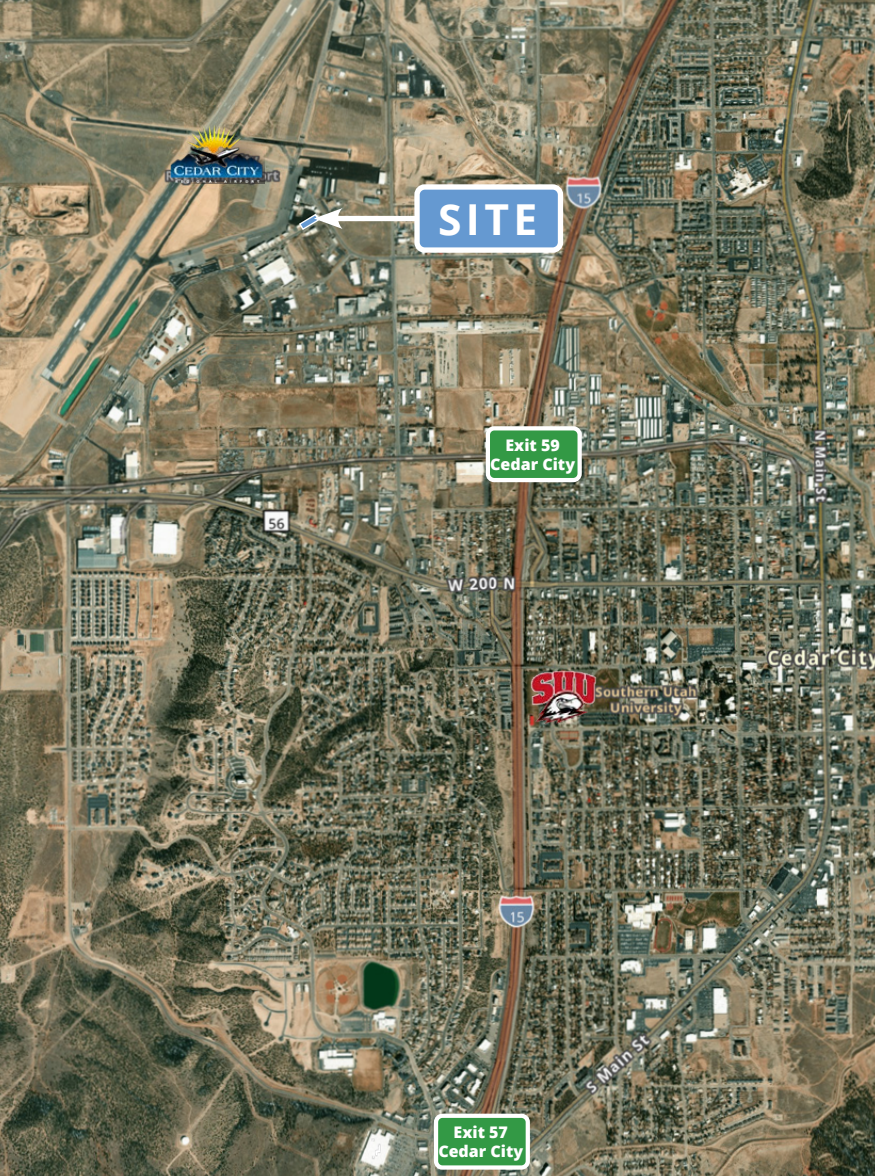
2280 & 2260 Aviation Way
Cedar City, UT

Two-building airplane hangar with direct runway access, located at Cedar City Regional Airport

Property Highlights

- 13,068 SF Total
 - 2260, Building 1 - ± 6,904 SF
 - 2280, Building 2 - ± 7,098 SF
- Office and small restroom in each
- 480 Volt / 3-Phase
- 18' Clear height
- 56' x 17' Bi-fold hangar doors
- I & M-1 Zoning
- Excellent access to I-15
- Many recent runway and terminal improvements

Properties may be sold separately



Contact us:

Don L. Enlow, SIOR
Executive Vice President
+1 801 947 8388
don.enlow@colliers.com

Howard Layton, CCIM, MAI
Principal Broker
+1 801 947 8346
howard.layton@colliers.com

Marcy Pitman
Associate Broker
+1 801 947 8330
marcy.pitman@colliers.com

This document has been prepared by Colliers International for advertising and general information only. Colliers International makes no guarantees, representations or warranties of any kind, expressed or implied, regarding the information including, but not limited to, warranties of content, accuracy and reliability. Any interested party should undertake their own inquiries as to the accuracy of the information. Colliers International excludes unequivocally all inferred or implied terms, conditions and warranties arising out of this document and excludes all liability for loss and damages arising there from. This publication is the copyrighted property of Colliers International and/or its licensor(s). ©2024. All rights reserved.

Colliers
6440 S. Millrock Dr., Suite 500
Salt Lake City, UT 84121
Main: +1 801 947 8300
colliers.com

