

## LAND FOR SALE



### LAND HIGHLIGHTS

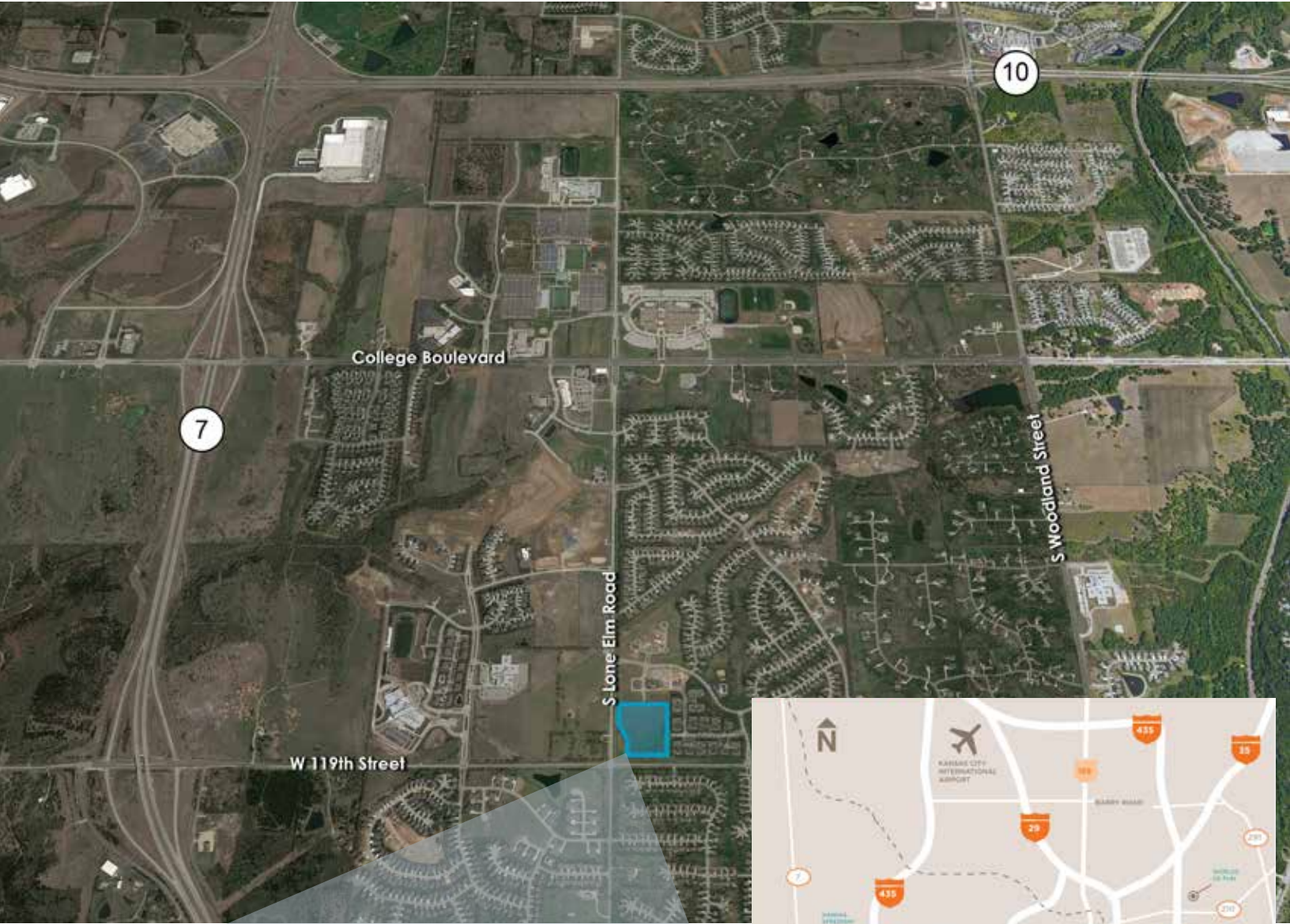
- 7.8 Acres Available
- Located in rapidly growing market
- Excellent access to Kansas 7 Highway
- Utilities on site
- Excellent location for education, daycare, church, multifamily, medical or neighborhood office and retail
- Sale Price: Contact Broker

### CONTACT

**MOLLY CRAWFORD MUNNINGHOFF**  
P (816) 701-5013  
[mcrawford@copaken-brooks.com](mailto:mcrawford@copaken-brooks.com)



# OLATHE, KANSAS



## OLATHE KEY FACTS

140,545

Population

30.82

Median Age



2.85

Average Household Size

\$85,318

Median Household Income

## OLATHE INCOME



\$85,318

Median Household Income



\$35,771

Per Capita Income



\$85,318

Median Net Worth

## WORKFORCE HIGHLIGHTS

- Access to over 1.25 million workers in an 20-county laborshed
- 44% of the population over 25 has a Bachelor's Degree or higher (Olathe, KS)
- Kansas City MSA unemployment rate of 6.0% (9/14)
- One of the fastest growing major job markets in the Midwest (KC MSA)
- Realitively lower cost of living than most major metros

## MAJOR EMPLOYERS

Garmin International  
 Honeywell  
 Olathe Medical Center  
 Johnson County Government  
 FAA/Air Route Traffic Control Center  
 Pepsi Beverages Company

MidAmerica Nazarene University  
 Sysco Food Services of Kansas City  
 TransAm Trucking Inc.  
 Tyson Foods  
 Farmers Insurance  
 & many more

## DEMOGRAPHIC HIGHLIGHTS

	1 mile	3 miles	5 miles
<b>2020 Population</b>	7,891	58,354	126,911
<b>2020 Avg HH Income</b>	\$133,938	\$106,322	\$105,305
<b>2020 Med HH Income</b>	\$116,346	\$88,966	\$85,068



# LAND FOR SALE



## CONTACT

**MOLLY CRAWFORD MUNNINGHOFF**

P (816) 701-5013

[mcrawford@copaken-brooks.com](mailto:mcrawford@copaken-brooks.com)

All information furnished regarding property for sale or lease is from sources deemed reliable, but no warranty or representation is made as to the accuracy thereof and the same is subject to errors, omissions, changes of prices, rental or other conditions, prior sale or lease, or withdrawal without notice.