



REECE
COMMERCIAL REAL ESTATE
a Berkshire Hathaway Affiliate

for more information contact:

RYAN SCHULTEIS

913.945.3741

ryans@reececommercial.com



TOWNE PLACE SUITES - 1,757 SF RETAIL SPACE
LAWRENCE, KS 66044



900 NEW HAMPSHIRE, LAWRENCE, KS 66044

1,757

SQUARE FEET

OPEN FLOORPLAN
RETAIL SPACE



PRICE/SF/YEAR

\$22.50 NNN

BUILDING CLASS

A

YEAR BUILT

2014

BUILDING TYPE

MIXED USE

LOCATION DESCRIPTION

Southeast corner of 9th and New Hampshire

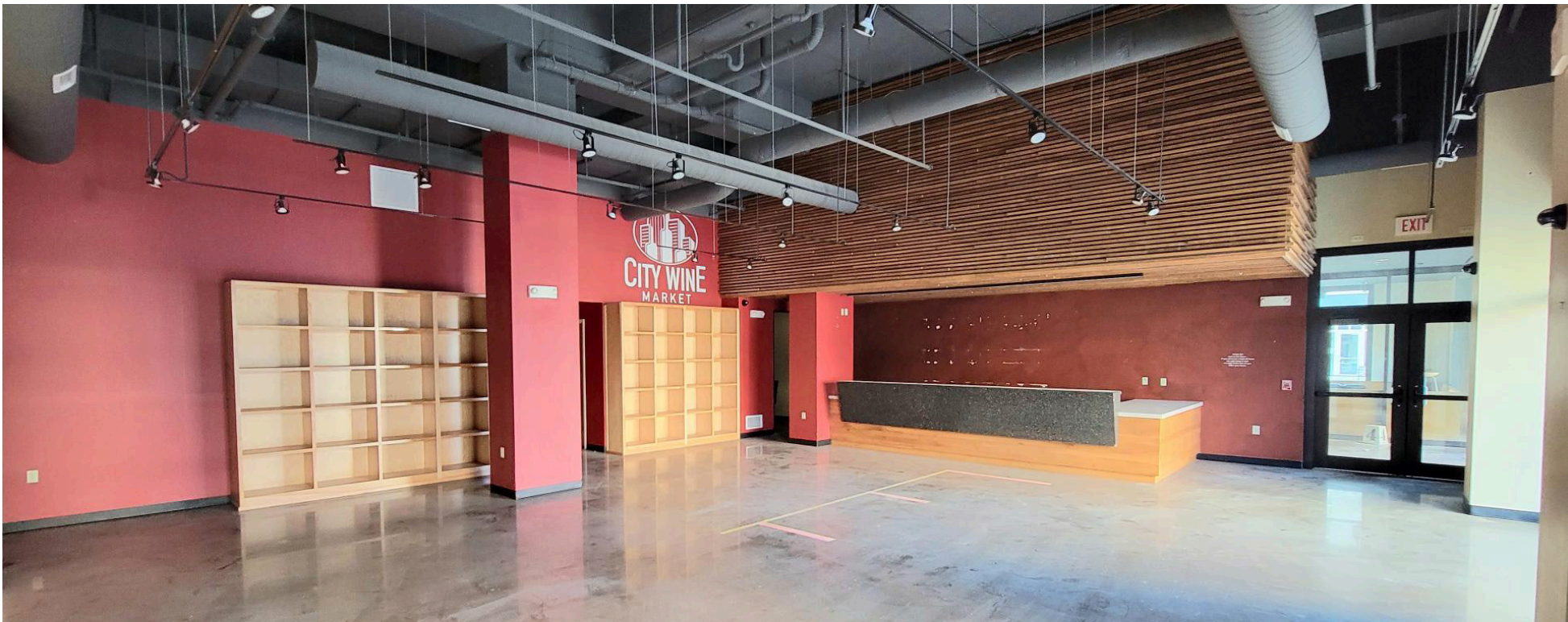
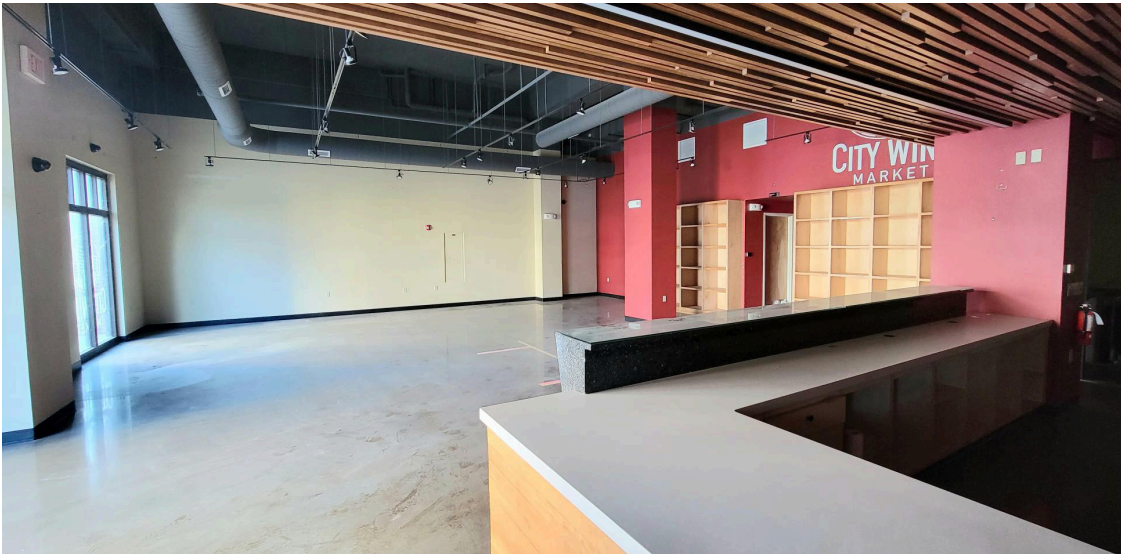
HIGHLIGHTS

- Open floorplan retail space
- Restaurant space next-door leased to successful local restaurant
- Perfect space for coffee shop, convenience store, liquor store, market.
- Located in Downtown Lawrence
- Three minutes to KU campus



900 NEW HAMPSHIRE, LAWRENCE, KS 66044

PHOTOS





900 NEW HAMPSHIRE, LAWRENCE, KS 66044

RETAIL SPACE

900 New Hampshire Lawrence, KS - Retail A

Restaurant Interior - 5,075 SF (incl. vestibule allocation)

475 SF Patio Seating

