

22750 HOOVER ROAD
WARREN, MICHIGAN

INDUSTRIAL FOR SALE
23,580 Square Feet Available



**SIGNATURE
ASSOCIATES**
KNOW SIGNATURE | KNOW RESULTS



PROPERTY FEATURES

- 23,580 square feet available
- 680 square feet office
- 15' – 23' clear height
- (1) 14' x 19' grade level door
- (1) truckwell
- Below market value
- Qualifies for cannabis use
- Up to 50' clear span
- Sale Price: \$995,000 (\$42.20/sq. ft.)



For more information, please contact:

PAUL SAAD
(248) 359 0652
psaad@signatureassociates.com

BEN WILKIEMEYER
(248) 359 0624
bwilkiemeyer@signatureassociates.com

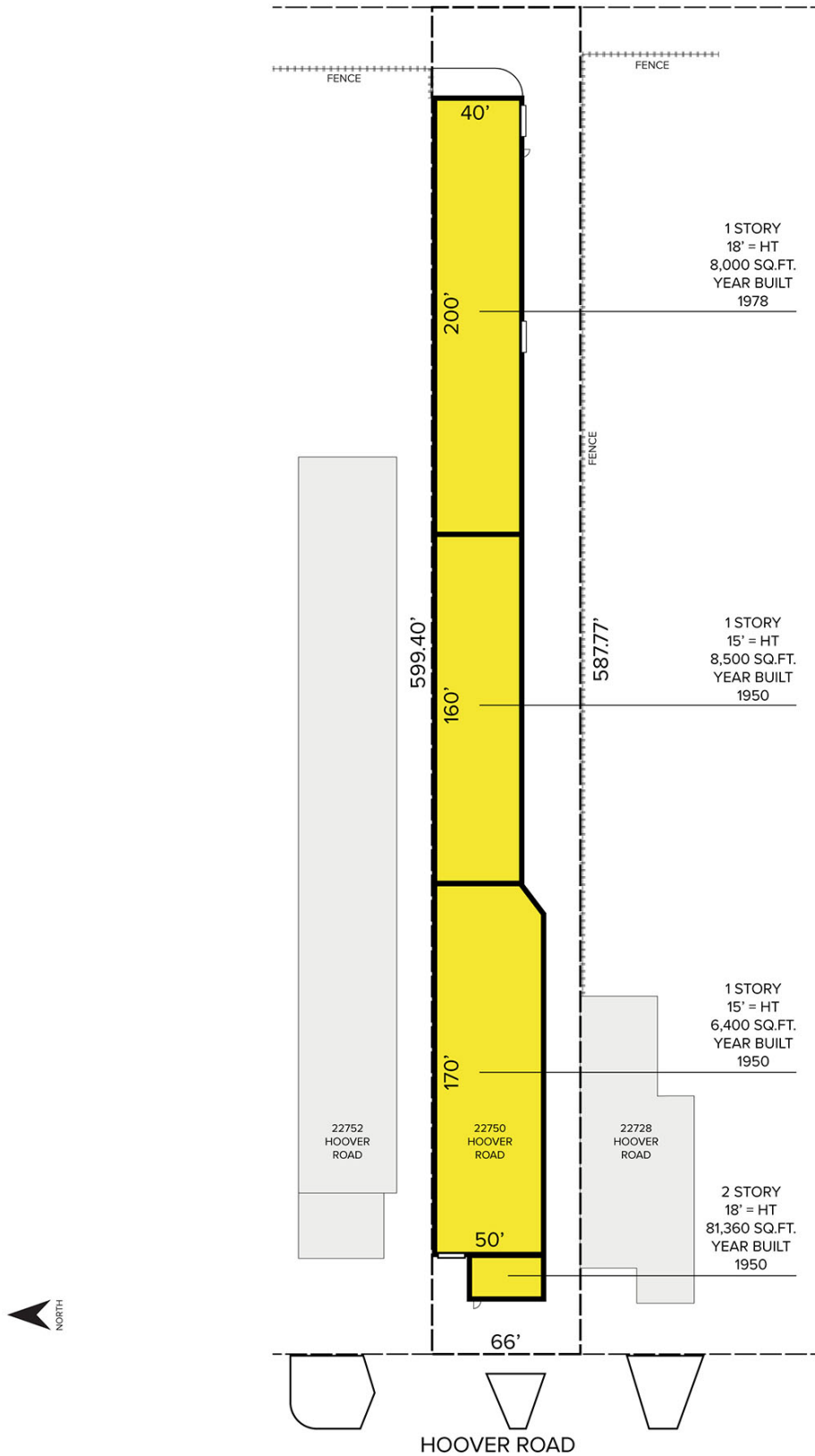
SIGNATURE ASSOCIATES
One Towne Square, Suite 1200
Southfield, MI 48076
www.signatureassociates.com

22750 Hoover Road – Warren, Michigan

Industrial For Sale

23,580
Square Feet
AVAILABLE

Site Plan



For more information, please contact:

PAUL SAAD
(248) 359 0652
psaad@signatureassociates.com

BEN WILKIEMEYER
(248) 359 0624
bwilkiemeyer@signatureassociates.com

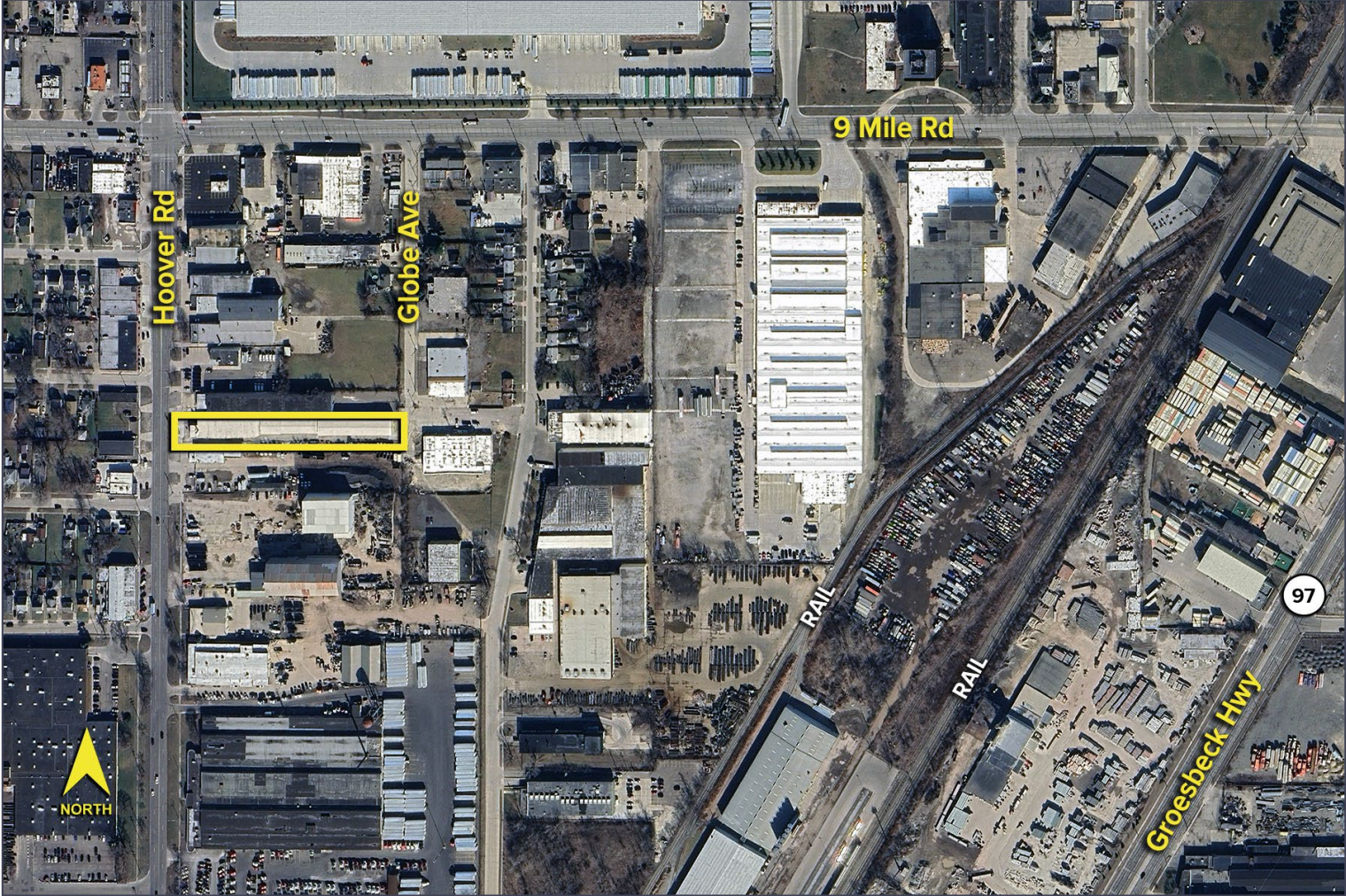
SIGNATURE ASSOCIATES
One Towne Square, Suite 1200
Southfield, MI 48076
www.signatureassociates.com

22750 Hoover Road – Warren, Michigan

Industrial For Sale

23,580
Square Feet
AVAILABLE

Aerial



For more information, please contact:

PAUL SAAD
(248) 359 0652
psaad@signatureassociates.com

BEN WILKIEMEYER
(248) 359 0624
bwilkiemeyer@signatureassociates.com

SIGNATURE ASSOCIATES
One Towne Square, Suite 1200
Southfield, MI 48076
www.signatureassociates.com

Information is subject to verification and no liability for errors or omissions is assumed. Price is subject to change and listing withdrawal.