



**FINEBERG & ASSOCIATES**  
 COMMERCIAL REAL ESTATE  
 104 S Main Street Bentonville, AR 72712

[ARKREALESTATE.COM](http://ARKREALESTATE.COM)



Map data ©2025 Google Imagery ©2025 Airbus

# TRACTS A-D CR 207 - EUREKA SPRINGS, AR

## OFFERING SUMMARY

Tract A:	10.33 AC   \$65,000
Tract B:	Sold
Tract C:	10.44 AC   \$65,000
Tract D:	10.01 AC   \$65,000
Tracts C & D:	20.45 AC   \$120,000

## PROPERTY HIGHLIGHTS

- Secluded tracts of land with exceptional views along a paved road
- Electric at street, well/septic needed
- Boundary survey & covenants available upon request
- Over 600 acres of land for sale surrounding these tracts

## PROPERTY OVERVIEW

Choice tracts of land within the newly platted Pine Creek Subdivision! 15 minutes from Downtown Eureka Springs, and within an hour from Northwest Arkansas & Branson, MO.



**BRENNAN SHARPE**  
 (479)530-3774  
[brennan@arkrealestate.com](mailto:brennan@arkrealestate.com)





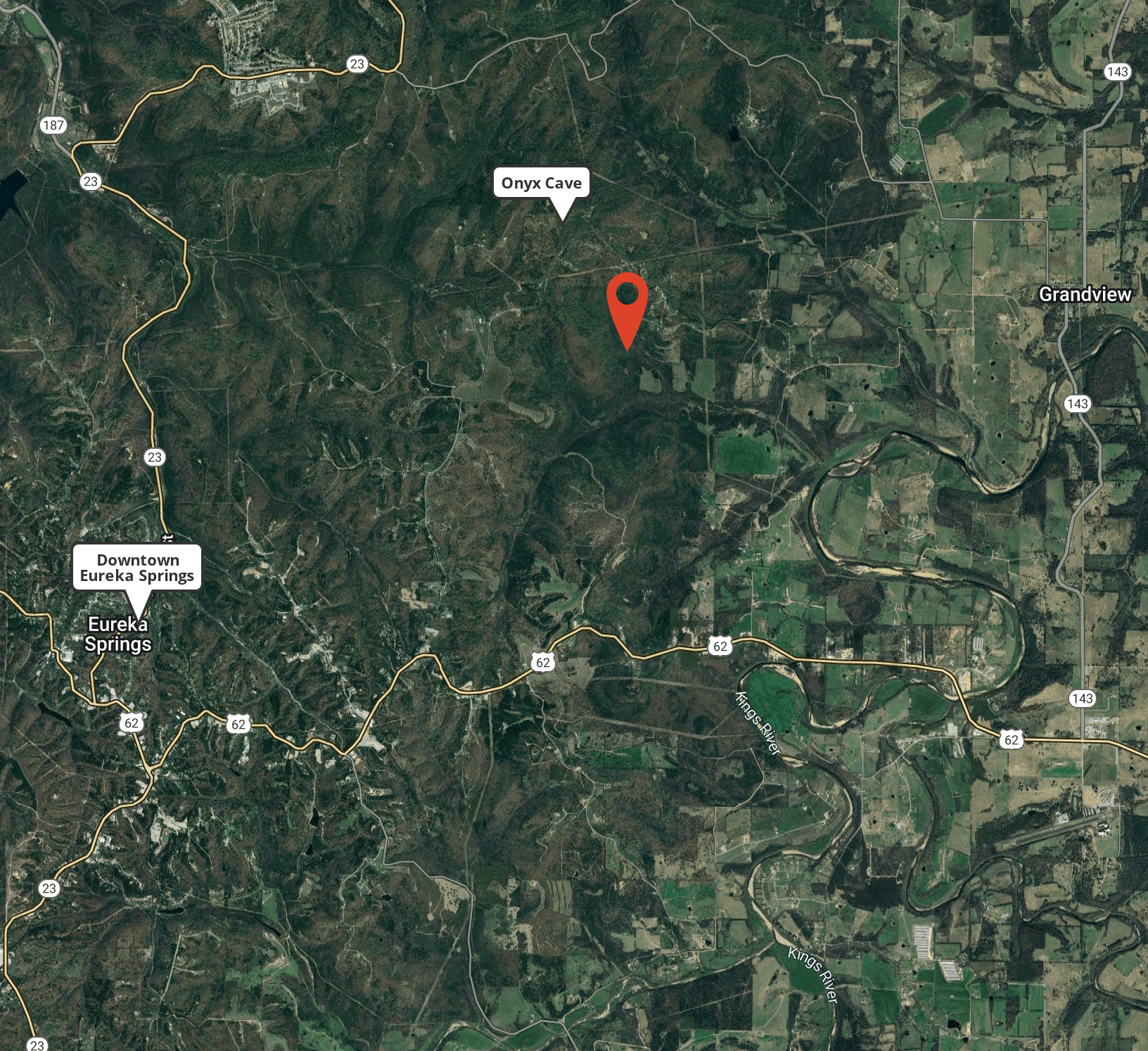
# FINEBERG & ASSOCIATES

COMMERCIAL REAL ESTATE

(479) 271-4161

104 S Main Street Bentonville, AR 72712

ARKREALSTATE.COM



Map data ©2025 Google Imagery ©2025 Airbus, Landsat / Copernicus, Maxar Technologies

**BRENNAN SHARPE**  
(479)530-3774  
brennan@arkrealestate.com

