



INFINITY
VIEWS

809 EAST EIGHTH STREET

A NEW LIGHT ON THE HORIZON



STREAM

809 East Eighth Street

INFINITY VIEWS:
A NEW LIGHT ON THE HORIZON



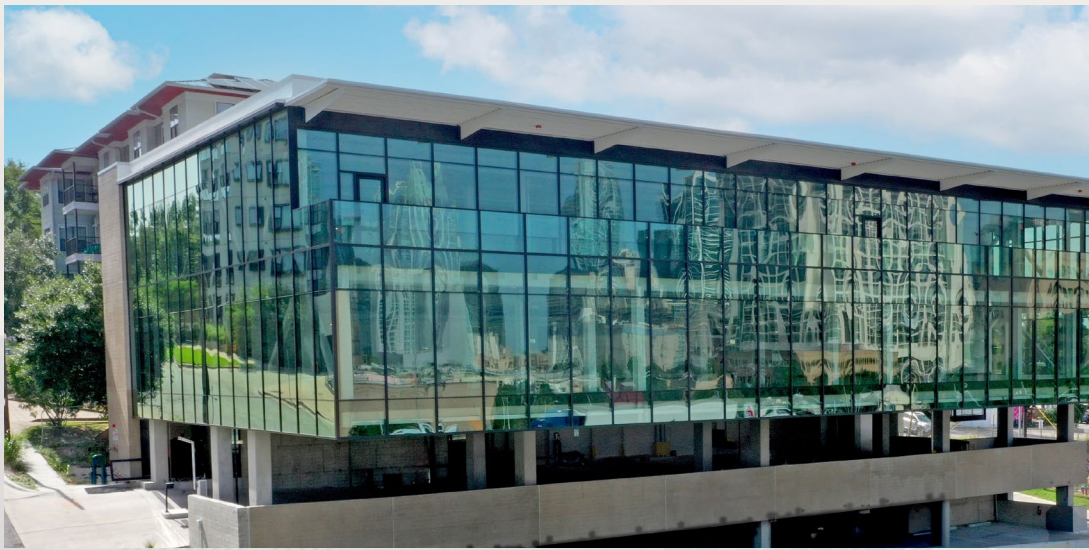
VIEW VIDEO



Priceless views with endless opportunities - Inf1nity Views is the premier office destination with quick and convenient access to IH-35. Just minutes to the Central Business District, Texas State Capitol, Austin Convention Center, 6th Street Entertainment District, and numerous other retail, hotels, and restaurants. This Class A office building is the perfect solution for a work, play, live environment.

4,640 - 12,050

SQUARE FEET AVAILABLE



Spec Suites

AVAILABLE



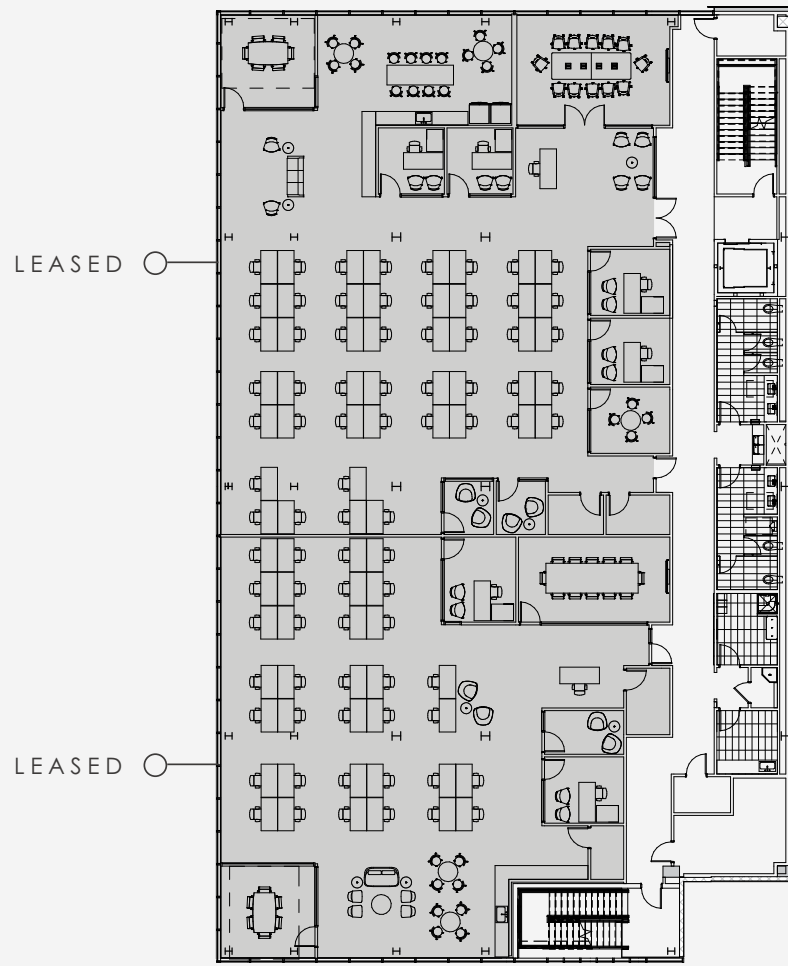






Floor 1

Fully Leased | 12,566 SF



Floor 2

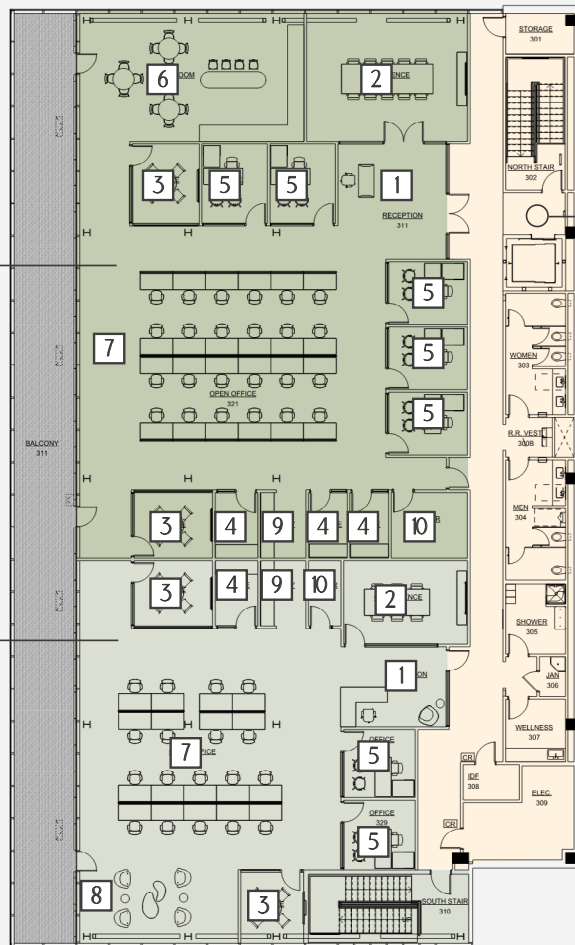
Suite 200 & 210 | Full Floor Available - 12,050 SF

Suite
200

7,410 SF

Suite
210

4,640 SF



Common Area

- 1** RECEPTION
- 2** CONFERENCE ROOM
- 3** HUDDLE
- 4** PHONE ROOM
- 5** OFFICE
- 6** BREAK ROOM
- 7** OPEN OFFICE
- 8** LOUNGE
- 9** COPY ROOM
- 10** IT/STORAGE

Floor 2

Spec Suite 200 & 210 Renders







69 Million

CARS PASS BY 809 EAST EIGHTH - ANNUALLY.

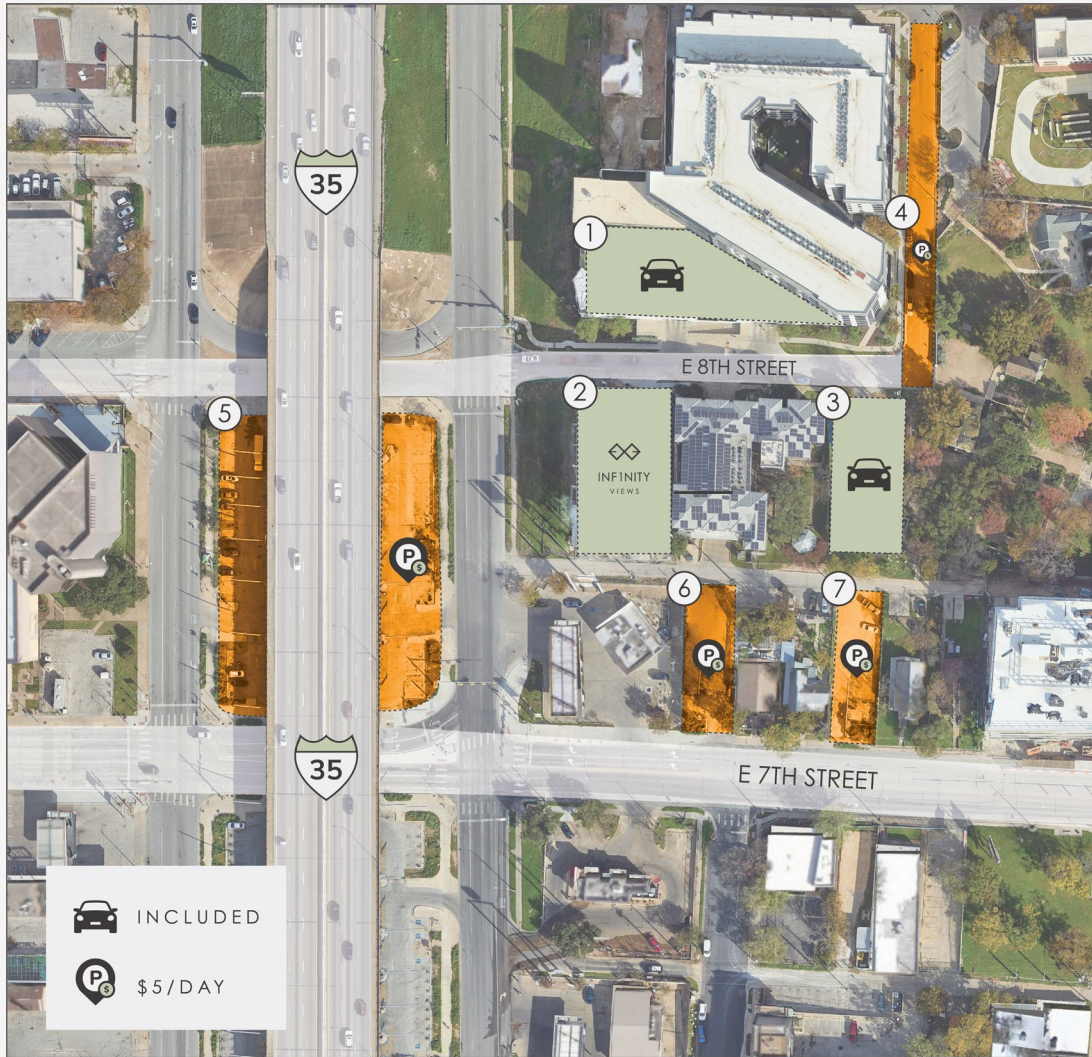


Signage Speaks

A MAJOR OPPORTUNITY YOU CAN'T PASS - BECAUSE THEY WILL. MONUMENTAL ADVERTISING ALL DAY, EVERY DAY.



Parking Options



210

TOTAL SPACES

① 15 SPACES

② 35 SPACES

③ 20 SPACES

④ 20 SPACES

④ 20 SPACES

⑤ 100 SPACES

⑥ 10 SPACES

⑦ 10 SPACES

⑧ 140 SPACES

Browse Interactive Map

CLICK TO OPEN LINK

0.7 Mi

FROM DOWNTOWN &
THE TEXAS CAPITAL

2.0 Mi

FROM THE UNIVERSITY
OF TEXAS AT AUSTIN

11.5 Mi

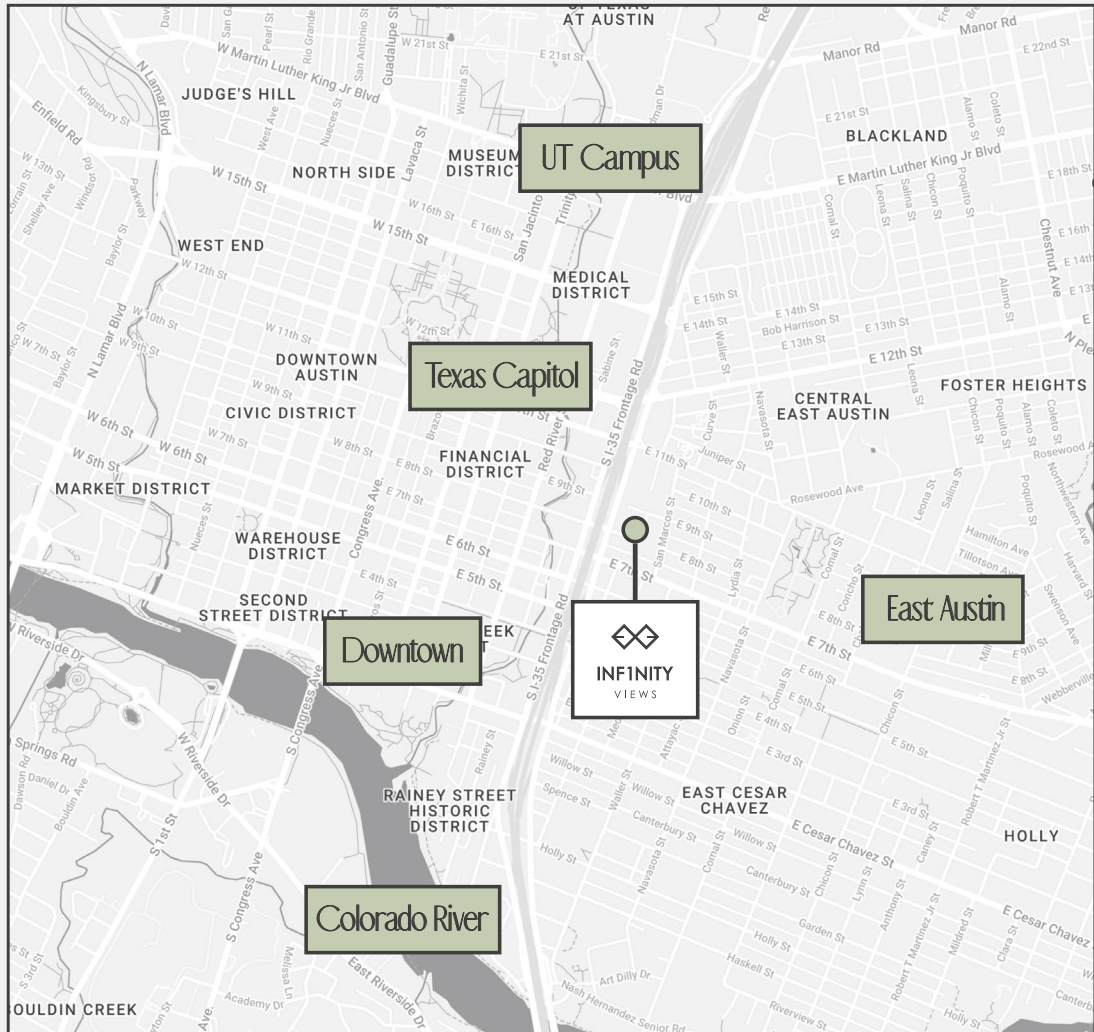
FROM THE DOMAIN
SHOPPING CENTER

3.5 Mi

FROM ZILKER PARK &
THE COLORADO RIVER

Go Beyond The Horizon

Located steps from all the Eastside has to offer - 0.7mi from Downtown and 5 minutes to the UT Campus with direct access to IH-35.



Shop

TRADER JOE'S
TARGET
AUSTIN ROCKS

LULULEMON
WEST ELM
WHOLE FOODS

ROYAL BLUE GROCERY
OFFICE DEPOT
MILK+HONEY SPA

Eat and Drink

FRANKLIN BBQ
MOONSHINE PATIO
SPARTAN PIZZA
OLD THOUSAND
JO'S COFFEE
STUBB'S BBQ

THE IRON CACTUS
OLD THOUSAND
HOBOKEN PIE
BLIND PIG PUB
LAMBERTS
GABRIELA'S

CONTAINER BAR
GUS'S FRIED CHICKEN
JIMMY JOHN'S
BLIND PIG PUB
THE IRON CACTUS
STARBUCKS

Do and See

ACL LIVE
ALAMO DRAFTHOUSE
ANTONE'S
AUSTIN LIBRARY
ESTHER'S FOLLIES
LADY BIRD LAKE

PARAMOUNT THEATRE
SOULCYCLE
PALM PARK
RAINEY DISTRICT
COLORADO RIVER
ZILKER BREWING CO.

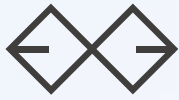
YMCA
BLACK SWAN YOGA
THE COMTEMPORARY
ZILKER BREWING CO
VIOLET CROWN CINEMA
RIDE INDOOR CYCLING

Stay

EAST AUSTIN HOTEL
HILTON GARDEN INN
HYATT HOUSE
HOTEL INDIGO
OMNI AUSTIN
HOLIDAY INN

MARRIOTT HOTELS
SHERATON AUSTIN
THE DRISKILL
JW MARRIOTT
FAIRMONT AUSTIN
LA QUINTA INN

THE LINE AUSTIN
FOUR SEASONS HOTEL
ALOFT DOWNTOWN
COURTYARD MARRIOTT
SONDER EAST ELEVENTH



INFINITY VIEWS



STREAM

BRAD PHILP | 512.481.3018
BPHILP@STREAMREALTY.COM

BRITA HOVDE | 608-259-6309
BRITA.HOVDE@STREAMREALTY.COM