



For lease

Shackleford Corporate Center - Flex Space

4201-4217 S Shackleford Rd, Little Rock, AR

Location

Shackleford Corporate Center is a five building complex located in west Little Rock with great access to I-430.

Total Site Size

- 177,550 SF
- +/- 12.46 acres

Zoning

- I-1 - Industrial Park District

Year Built / Expanded

- 1992

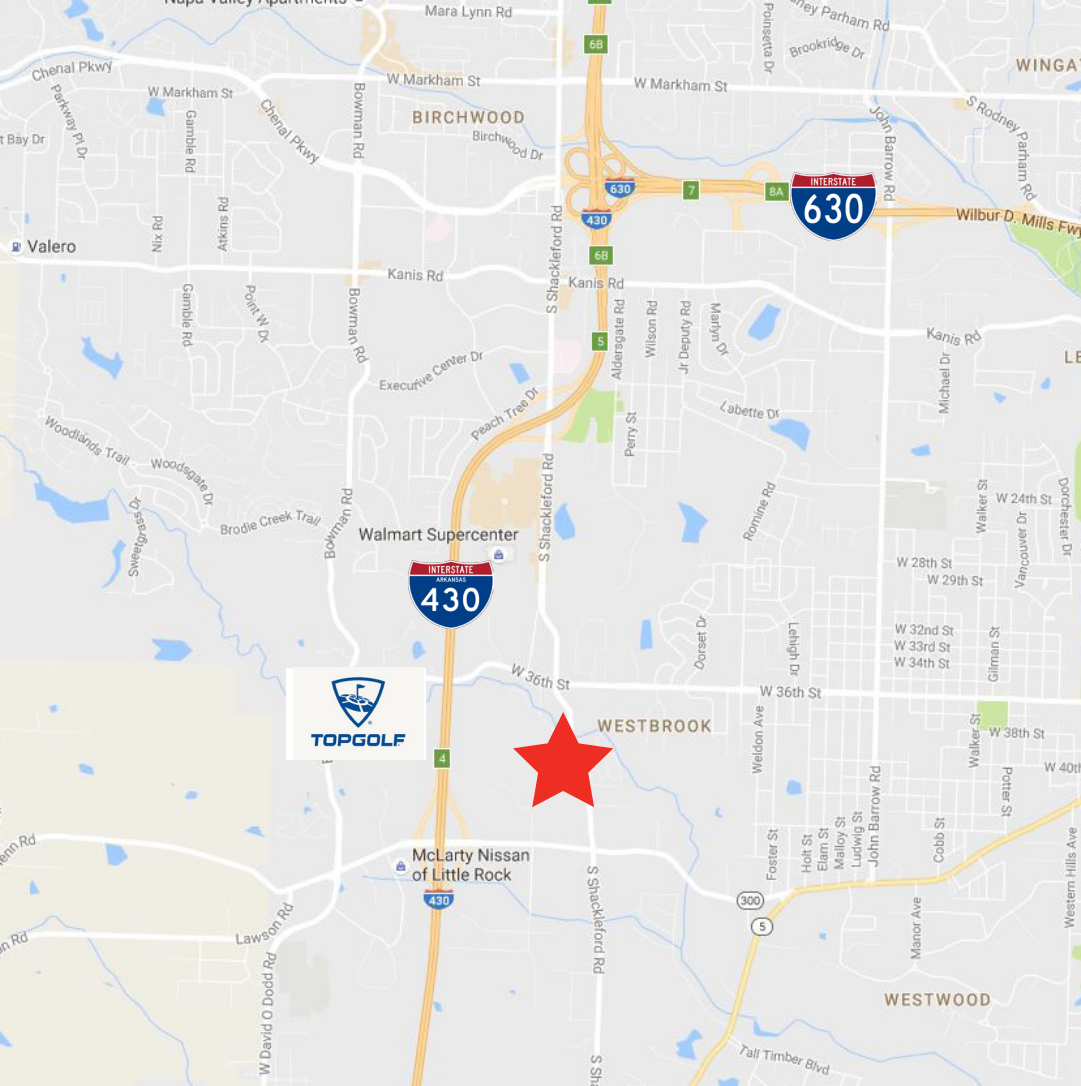
Building Features

- 18' clear height
- Located near intersection of Colonel Glenn Rd and S Shackleford Rd
- Dock-high overhead doors

Available Suites & Rates

Suite 2B	5,000 SF (warehouse/storage)	\$4.50/SF
----------	---------------------------------	-----------

- CAM: \$1.50/SF



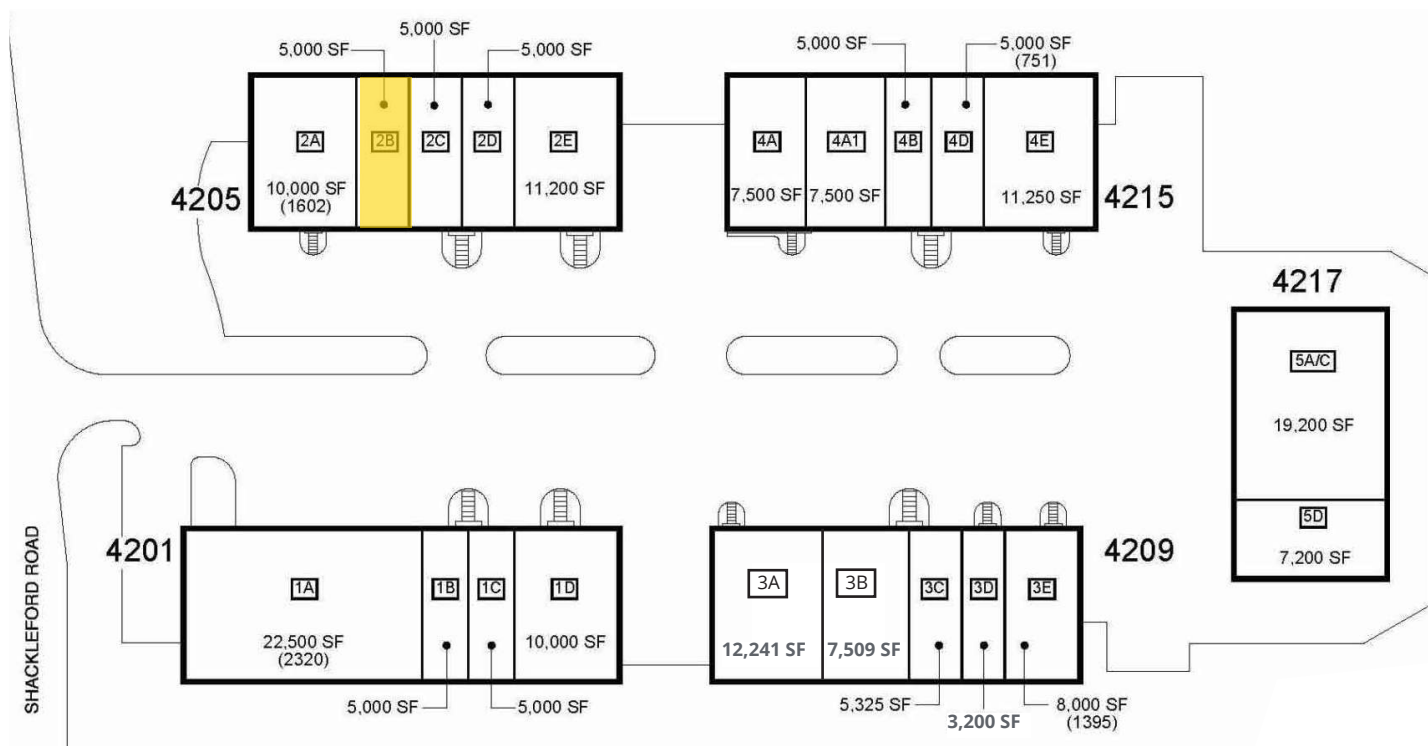
Contact Us

Casi Runnells, CCIM, RPA
 501 372 6161 | 713
 casi.runnells@colliers.com

Drew Holbert, CCIM, SIOR
 501 372 6161 | 756
 drew.holbert@colliers.com

Colliers | Arkansas
 1 Allied Dr, Suite 1500
 Little Rock, AR 72202
 +1 501 372 6161
 www.colliers.com/arkansas

Site Plan

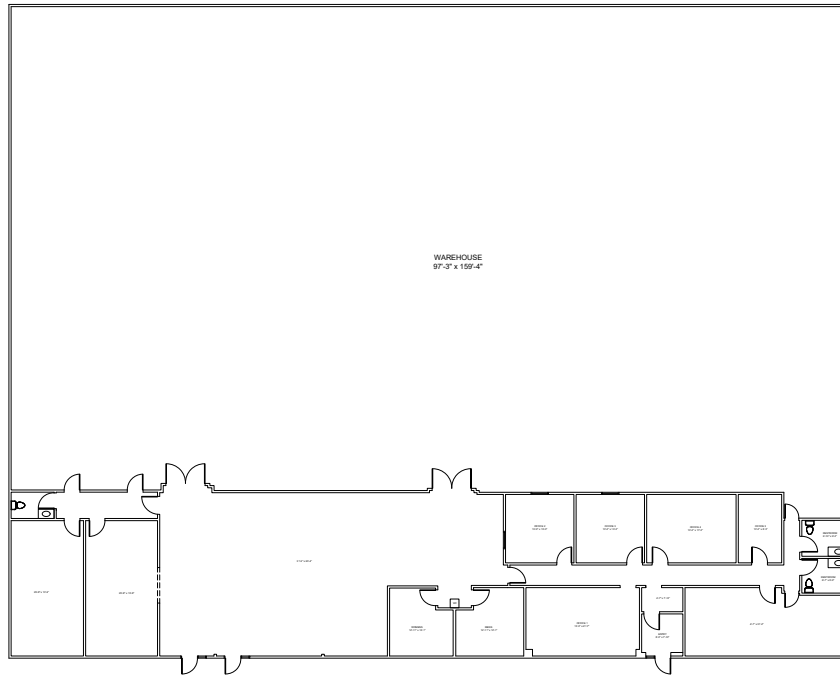


Shackleford Corporate Center - Flex Space

4201-4217 S Shackleford Rd, Little Rock, AR

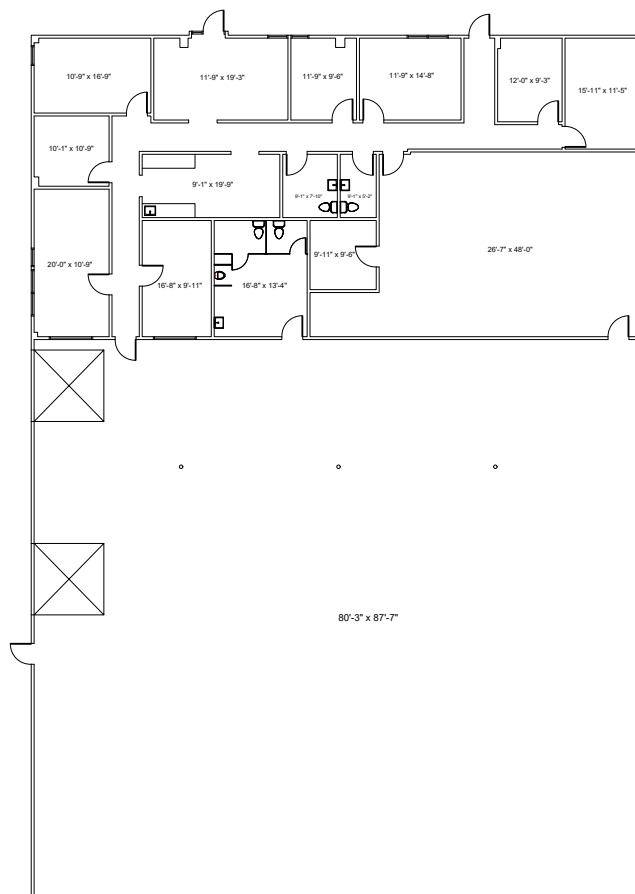
Suite 5A-C

- 19,200 SF



Suite 4E

- 11,250 SF



Shackleford Corporate Center - Flex Space

4201-4217 S Shackleford Rd, Little Rock, AR



Copyright © 2024 Colliers International.

Information herein has been obtained from sources deemed reliable, however its accuracy cannot be guaranteed. The user is required to conduct their own due diligence and verification.