

BYRD
REAL ESTATE
GROUP



FOR LEASE

Storage Yard
\$.03 psf mo NNN

Site Size +/- 46.7 acres

Heavy Industrial Zone

2425 E MAGNESIUM

Parcel # 36215.9011

+/- 22 ACRES

CONTACT

US NOW



Doug Byrd 509.216.6575



Doug@ByrdRealEstateGroup.com



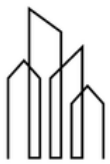
1912 N Division, Ste 201
Spokane WA 99207

- *DEMISABLE TO +/- 1 ACRE
- *EASY ACCESS TO MAJOR ARTERIALS
- *MOSTLY FENCED
- *ADDITIONAL ACREAGE COULD BE AVAILABLE

www.ByrdRealEstateGroup.com

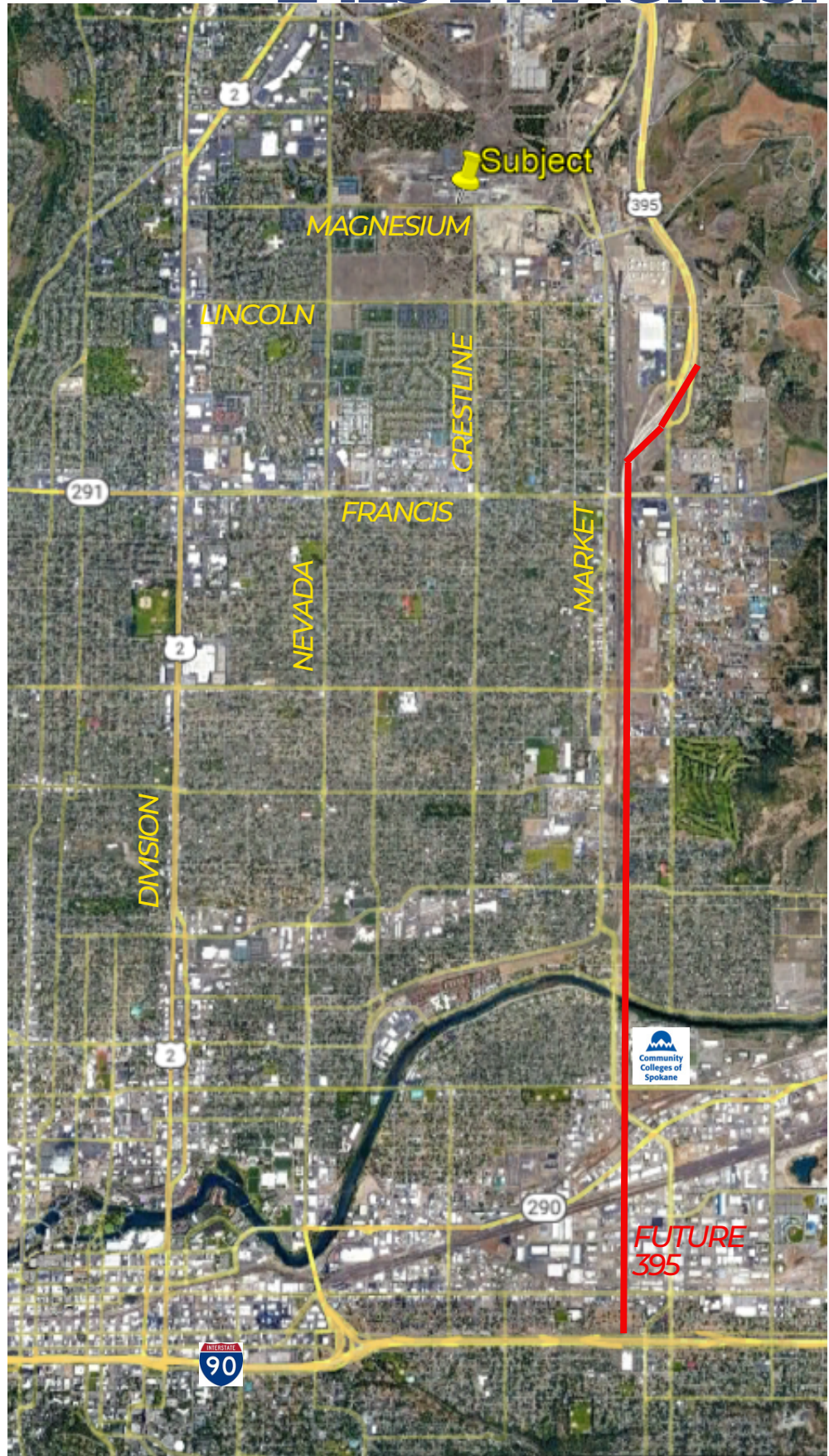
PRODUCING PROPERTY SOLUTIONS

All information is furnished by the Owner &/or Broker and believed to be complete and correct. The Owner &/or Broker cannot be responsible for changes, errors, omissions or withdrawals of this offering. The above information is from sources deemed reliable but should be verified by parties that could be adversely affected by any statements or information. This is not an offering of sub-agency, with commission splits to be determined.



BYRD
REAL ESTATE
GROUP

2425 E MAGNESIUM



CONTACT

US NOW



509.216.6575
Doug Byrd



Doug@ByrdRealEstateGroup.com



1912 N Division, Ste 201
Spokane WA 99207

www.ByrdRealEstateGroup.com

PRODUCING PROPERTY SOLUTIONS

All information is furnished by the Owner &/or Broker and believed to be complete and correct. The Owner &/or Broker cannot be responsible for changes, errors, omissions or withdrawals of this offering. The above information is from sources deemed reliable but should be verified by parties that could be adversely affected by any statements or information. This is not an offering of sub-agency, with commission splits to be determined.