

Shelby Hwy

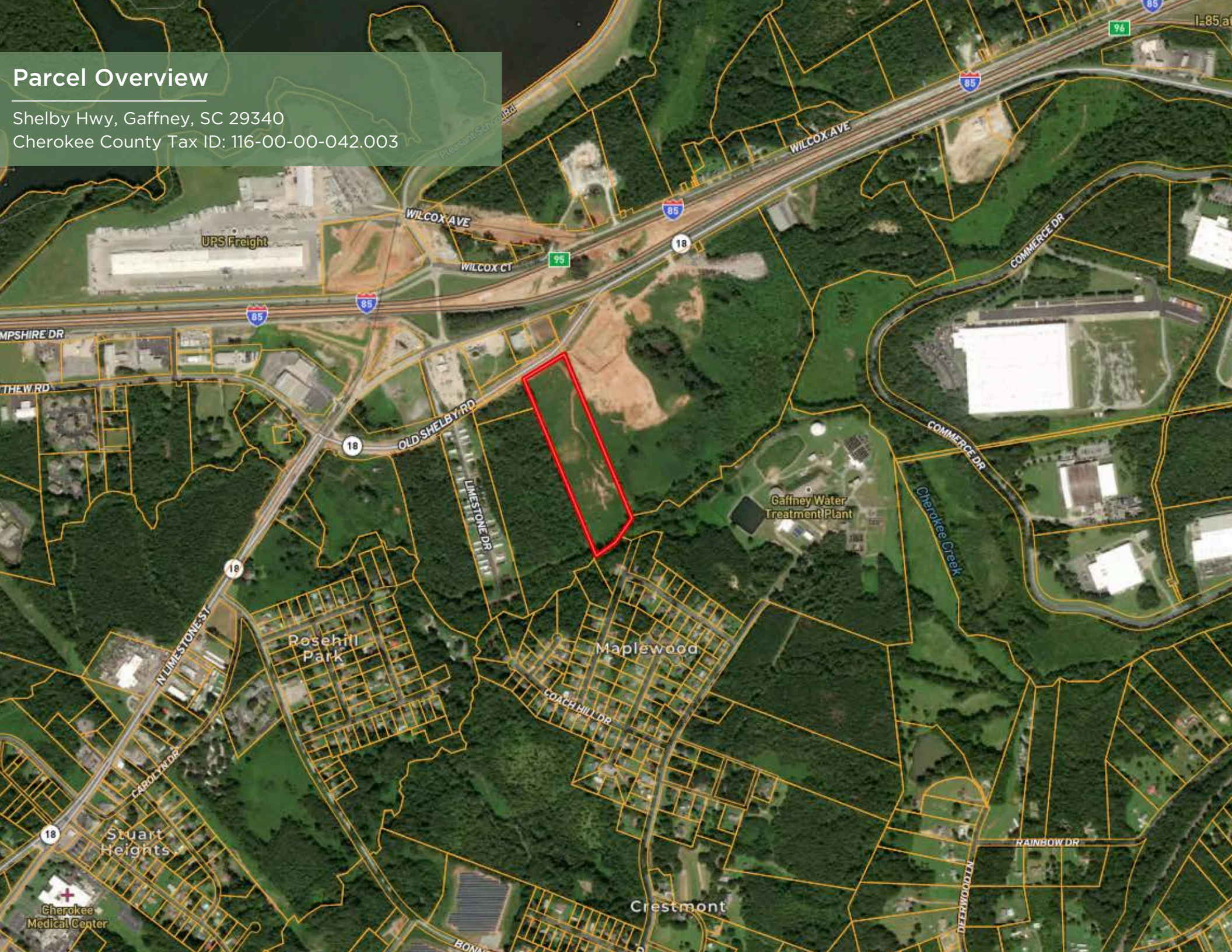
±12.51 Acre Industrial Site



REEDY
LAND CO.

Parcel Overview

Shelby Hwy, Gaffney, SC 29340
Cherokee County Tax ID: 116-00-00-042.003



Executive Summary

Shelby Hwy | Gaffney, SC 29340

Property Summary

Positioned just off of Interstate 85, this 12.5 acre tract is ready for development in one of Cherokee County's fastest-growing logistics and industrial corridors. With industrial-grade water and sewer already in place, the property delivers immediate development efficiency and reduced upfront infrastructure costs; ideal for industrial, flex, commercial, or high-density residential concepts.

Property Highlights

- ± 50 minutes from Charlotte
- ± 50 minutes from Greenville
- Located right off exit 95 on I-85
- Great topography
- Industrial water and sewer ready
- 375 ft of road frontage along Shelby Hwy

Offering Summary

Lot Size: ±12.51 Acres

Sale Price: \$1,245,000

Acres, taxes, utilities, and lot dimensions to be verified by Buyer and/or Buyer's agent

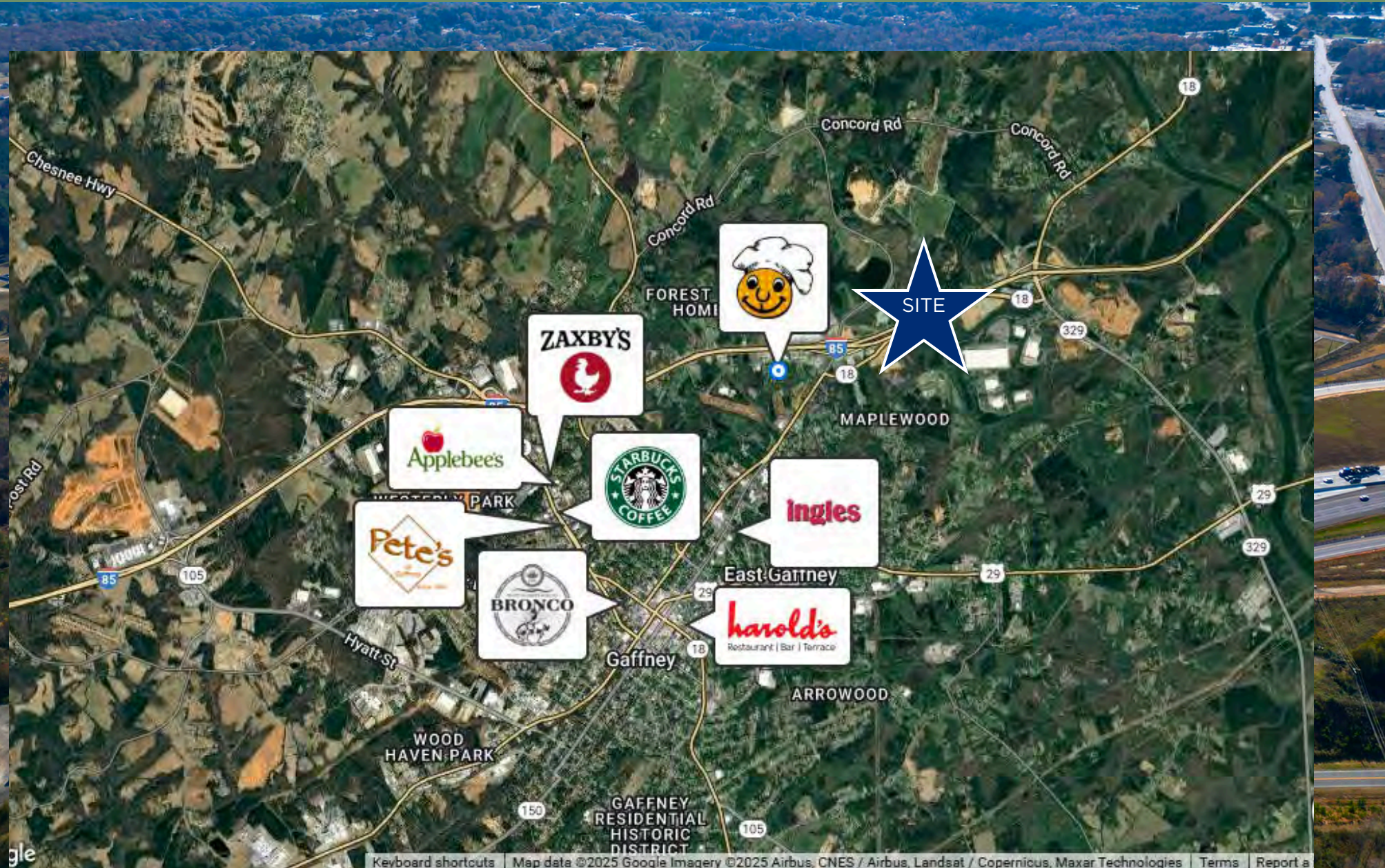


Property Photos



Retail Map

Walhalla, SC



gle

Contact Info

Reedy Land Co.

REEDY



Knox Duncan

Senior Associate

864-608-0029

kduncan@reedypg.com



Gabe Grammer

Senior Associate

803-205-3260

ggrammer@reedypg.com



Jonathan Monts

Associate

864-389-0299

jmonts@reedypg.com



Denton Warlick

Associate

864-238-7740

dwarlick@reedypg.com