



## Plainview Center – 10401 Linn Station Road, Louisville, KY

NTS is pleased to present Plainview Center, an exciting leasing opportunity at 10401 Linn Station Road in the heart of the thriving Jeffersontown corridor. Built in 1983, Plainview Center features approximately 100,000 square feet of first class office space. Please see the information below for more details:

### FOR LEASE

- Class B+ Corporate Office With Comprehensive Lobby & Common Area Renovation Planned
- Building Signage & Naming Rights Available
- Excellent Location Near I-64/I-264 & Hurstbourne & Shelbyville
- Ample Free Surface Parking (~4 per 1,000 s.f.)
- 24-hour On-Call Maintenance Services
- Minutes From the Louisville International Airport
- Managed and Leased by NTS Development Company

**For more information or to schedule a tour, please contact:**

**Tony Fluhr, SIOR, CCIM**

Managing Director  
502.429.9820  
tfluhr@ntsdevco.com

**Mark Meredith, CCIM**

Director of Commercial Leasing  
502.429.9827  
mmeredith@ntsdevco.com

[www.ntsdevelopment.com](http://www.ntsdevelopment.com)

# BUILDING OVERVIEW

## SPECIFICATIONS

**Type:** Class B+ Office Building

**SF:** 100,000

**Stories:** 3

**Typical Floor:** 34,000 SF

**Year Built:** 1983

**Elevators:** 2

**HVAC:** Roof Top Units & Perimeter Zone-Line Units

**Parking:** Surface, ~4 per 1,000 SF

## HIGHLIGHTS & AMENITIES



Excellent Location Near I-64/I-264 & Hurstbourne/Shelbyville



Minutes from the Louisville International Airport



24-hour on Call Maintenance Services

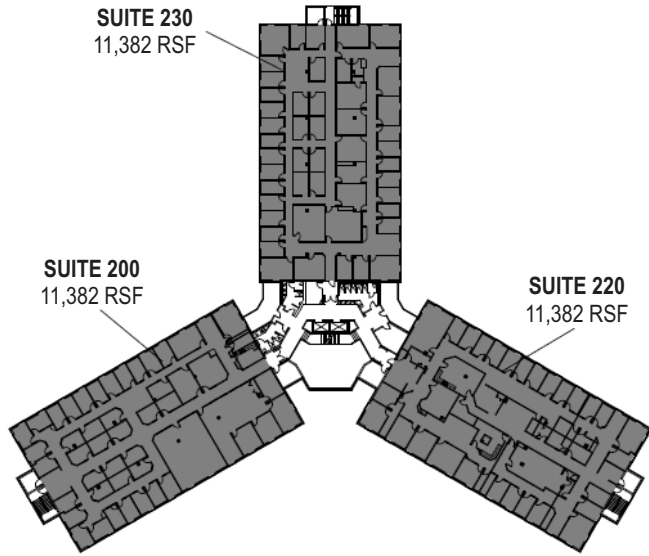


Managed and Leased by NTS Development Company

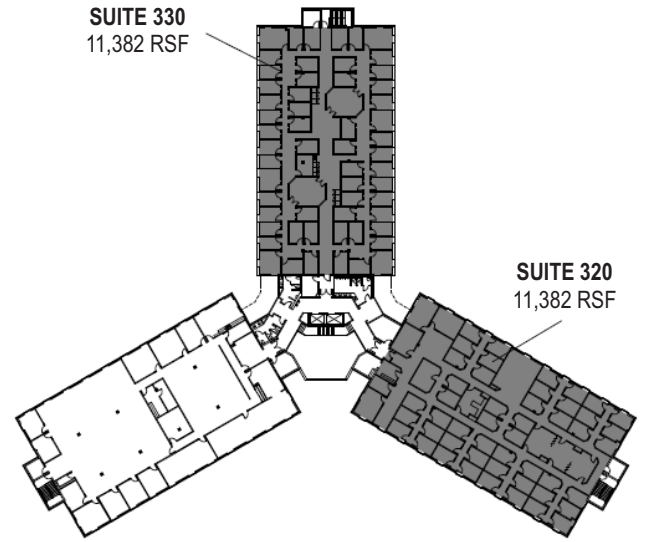


Although all information furnished regarding the property for sale, rental, or financing is from sources deemed reliable, such information has not been verified and no express representation is made nor is any to be implied as to the accuracy thereof and it is submitted subject to errors, omissions, change of price, rental or other changes or conditions, prior sale, lease financing, or withdrawal without notice and to any special conditions imposed by our principal.

# AVAILABLE FLOOR PLANS



**Second Floor | 34,145 RSF**



**Third Floor | 22,764 RSF**



Although all information furnished regarding the property for sale, rental, or financing is from sources deemed reliable, such information has not been verified and no express representation is made nor is any to be implied as to the accuracy thereof and it is submitted subject to errors, omissions, change of price, rental or other changes or conditions, prior sale, lease financing, or withdrawal without notice and to any special conditions imposed by our principal.