

# 5716 NW 135th St

5716 NW 135th St, Oklahoma City, OK 73142



Presented by  
Salt Commercial Real Estate

**Price: \$1,275,000**



# 5716 NW 135th St

5716 NW 135th St, Oklahoma City, OK 73142



This 5,932 sq. ft. custom-built office building was thoughtfully designed to accommodate two separate tenants or professional practices while maintaining a polished, cohesive presence. Each side enjoys its own private entrance and address, with shared access to a central boardroom, making the layout ideal for owner-occupants, investors, or co-tenancy operations.

## Layout & Features

Each of the two office suites—nearly 3,000 sq. ft. each—includes:

- A spacious reception and waiting area

- 6-8 large private offices per side, ideal for executives or professional teams

- 2 restrooms per side

- A full kitchen and conference room

- Separate utilities, ensuring independence and flexibility for each tenant

- The shared boardroom offers a professional common space for larger meetings, presentations, or collaborative gatherings.

## Location Highlights

Situated in the heart of Northwest Oklahoma City, this property offers both prestige and convenience.



## Robert Williams

[Robert@Okclnvestments.com](mailto:Robert@Okclnvestments.com)

(405) 822-2877

## Salt Commercial Real Estate

1508 W Edmond Rd  
Edmond, OK 73003

**Salt**  
COMMERCIAL  
REAL ESTATE

Walkable amenities: Over 20 restaurants and cafes within a few minutes' walk

Lifestyle proximity: Gaillardia Country Club less than half a mile north

Connectivity: Just one block south of the Kilpatrick Turnpike, providing fast access to I-35, I-40, I-44, and I-235 for easy citywide and regional travel

#### Investment Appeal

Flexible dual-tenant design supports owner-occupancy with supplemental rental income or full investment leasing

Ample parking and easy access for clients and staff

Upscale construction with attention to detail, comfort, and efficient space planning

Located in a high-growth professional corridor surrounded by offices, retail, dining, and executive housing

#### Summary

This is an exceptional opportunity to acquire a turnkey, high-quality office property with unmatched flexibility, strong location dynamics, and excellent accessibility. Ideal for law, medical, financial, or professional service users seeking a premium address in Northwest Oklahoma City.

Located at Memorial Rd and N MacArthur Blvd

Modern design with large offices



# 5716 NW 135th St

5716 NW 135th St, Oklahoma City, OK 73142

## Property Photos



2025-10-08\_12-58-22



IMG\_0817

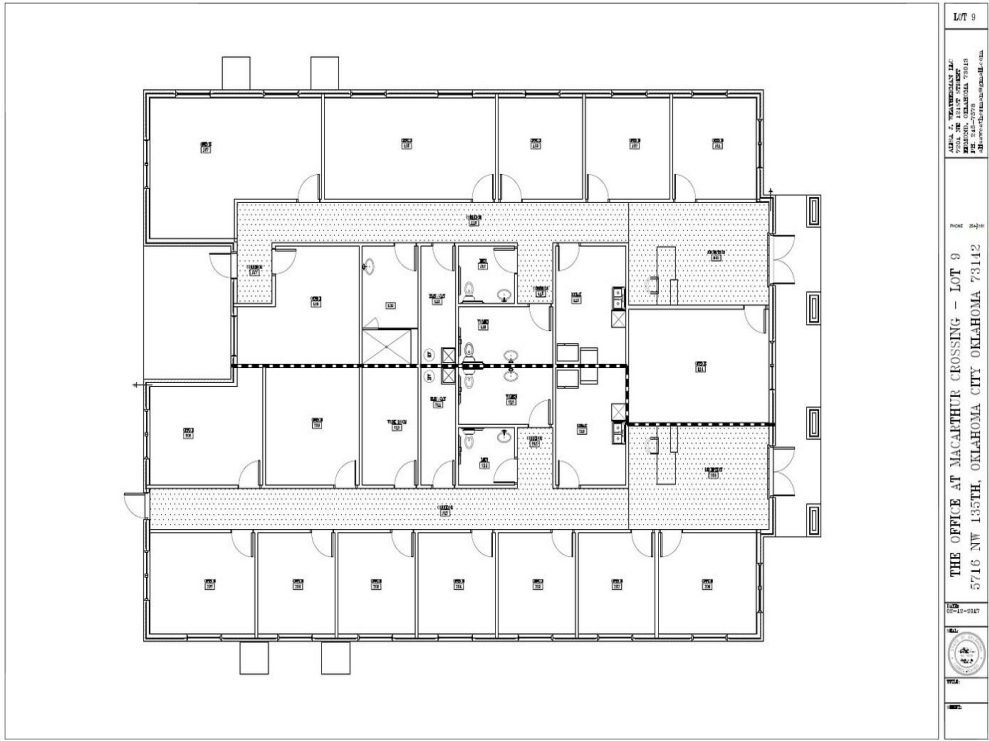
# 5716 NW 135th St

5716 NW 135th St, Oklahoma City, OK 73142

## Property Photos



IMG\_0815



5716 Floorplan



# 5716 NW 135th St

5716 NW 135th St, Oklahoma City, OK 73142

## Property Photos



IMG\_0788



IMG\_7323

# 5716 NW 135th St

5716 NW 135th St, Oklahoma City, OK 73142

## Property Photos



IMG\_0790



IMG\_7315



# 5716 NW 135th St

5716 NW 135th St, Oklahoma City, OK 73142

## Property Photos



IMG\_7320



IMG\_7316



# 5716 NW 135th St

5716 NW 135th St, Oklahoma City, OK 73142

## Property Photos



IMG\_7319



IMG\_7321

# 5716 NW 135th St

5716 NW 135th St, Oklahoma City, OK 73142

## Property Photos



IMG\_7318



# 5716 NW 135th St

5716 NW 135th St, Oklahoma City, OK 73142

## Location

