

Long Term Sublease Available

841 PRUDENTIAL DRIVE, JACKSONVILLE, FL 32207

SPACE PROFILE

66,169 SF

Total Available Space



41,754 SF - 7th Floor 24,415 SF - 8th Floor

Immediate

Availability

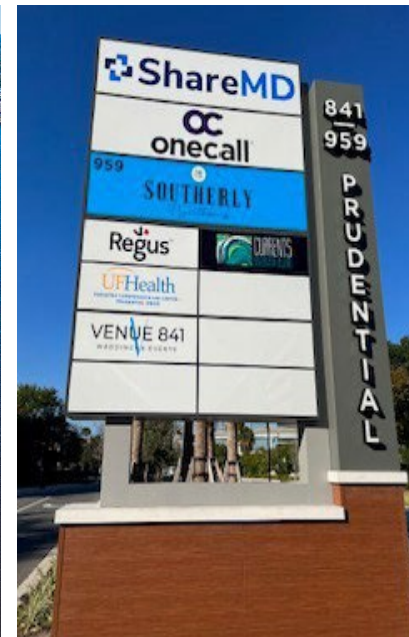
Inquire for Rate

KEY HIGHLIGHTS

- Large floorplan that can be subdivided
- Furniture available
- Recently renovated spaces
- 24/7 Security & on-site management

AMENITIES

- Bank ATM
- Full-service fitness center
- Cafe
- Meeting & Banquet spaces



AERIAL



AERIAL



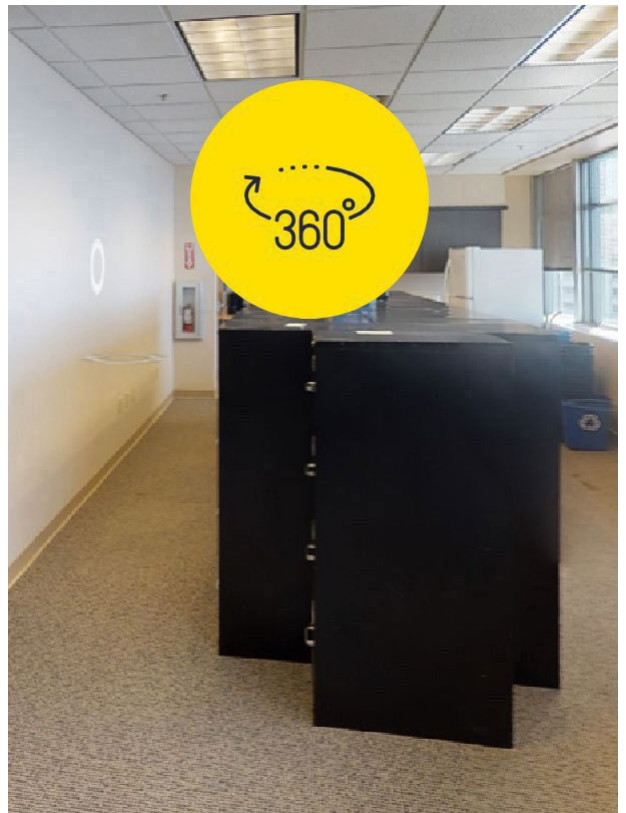
AERIAL

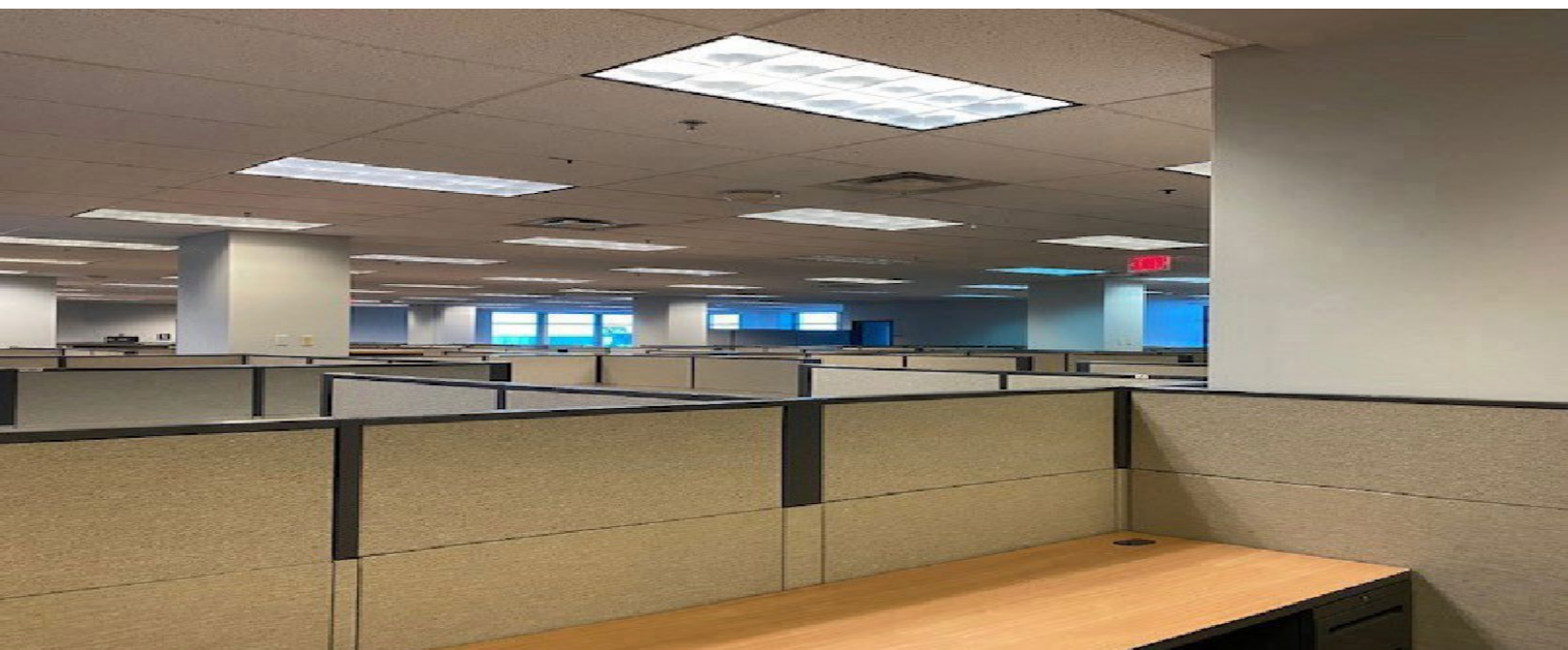
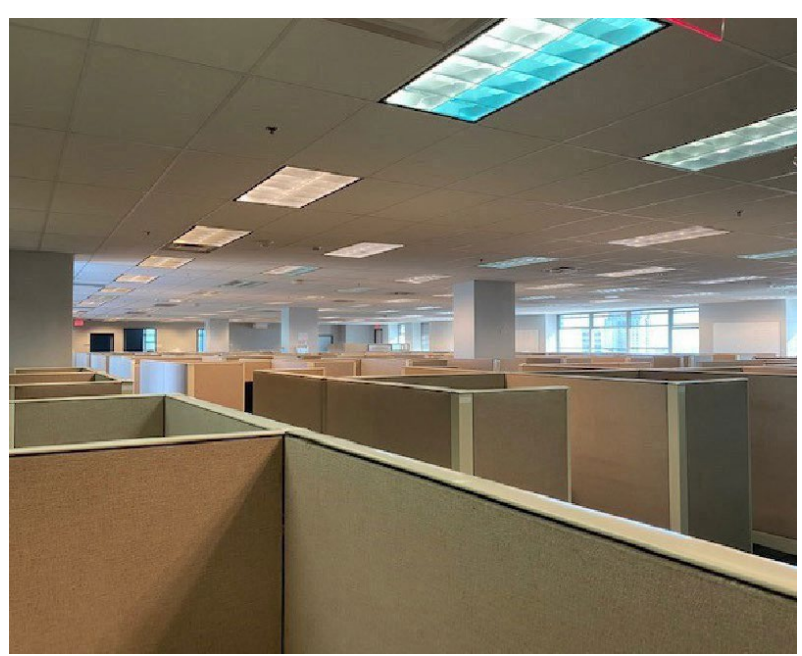


FLOOR PLANS

7th Floor

41,754 RSF
354 Cubicles
24 Offices

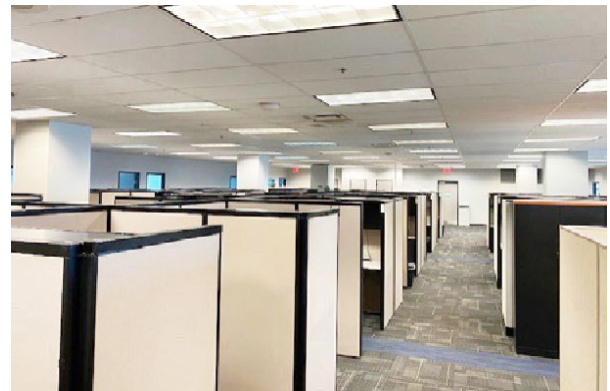




FLOOR PLANS

8th Floor

24,415 RSF
211 Cubicles
10 Offices



ACCESS MAP



Addison Commercial Real Estate, Inc.
Duke Addison
7899 Baymeadows Way Suite 100
Jacksonville, FL 32256
904-354-1789 Ext 212

The information contained in this communication has been obtained from a variety of sources believed to be reliable but has not been verified. NO WARRANTY OR REPRESENTATION, EXPRESS OR IMPLIED, IS MADE AS TO THE CONDITION OF THE PROPERTY OR ACCURACY OR COMPLETENESS OF THE INFORMATION CONTAINED HEREIN AND SAME IS SUBMITTED SUBJECT TO ERRORS, OMISSIONS, CHANGE OF PRICE, RENTAL OR OTHER CONDITIONS, WITHDRAWAL WITHOUT NOTICE AND TO ANY SPECIFIC CONDITIONS IMPOSED BY THE PROPERTY OWNER OR LESSOR.