

623 Centre St

RE/MAX Presented By:
RE/MAX Partners

623 Centre St, Brockton, MA 02302



623 Centre St

623 Centre St, Brockton, MA 02302

Property Details

Prime 10,000 SF office space available, offering exceptional visibility and monument signage on a high-traffic corridor. Strategically located near Signature Healthcare Brockton Hospital, this office property is ideal for medical, professional, or corporate use. The building features private offices, conference rooms, and ample parking, providing both functionality and convenience. A rare opportunity to establish your business in a high-demand location with easy access to major roadways and public transportation.

Price: Upon Request

- Monument Signage
- Exceptional Visibility
- Strategically Location
- High Traffic Corridor

View the full listing here: <https://www.loopnet.com/Listing/623-Centre-St-Brockton-MA/31642303/>

Rental Rate:	Upon Request
Property Type:	Office
Building Class:	B
Rentable Building Area	10,000 SF
:	
Year Built:	1976
Walk Score ®:	65 (Somewhat Walkable)
Transit Score ®:	34 (Some Transit)
Rental Rate Mo:	Upon Request

623 Centre St

623 Centre St, Brockton, MA 02302

Listing space

1st Floor Ste 1

Space Available:	10,000 SF
Rental Rate:	Upon Request
Date Available:	May 01, 2025
Service Type:	TBD
Space Type:	New
Space Use:	Office
Lease Term:	Negotiable

623 Centre St

623 Centre St, Brockton, MA 02302

Location



623 Centre St

623 Centre St, Brockton, MA 02302

Property Photos



IMG_7739



IMG_7729

623 Centre St

623 Centre St, Brockton, MA 02302

Property Photos



IMG_7730



IMG_7731

623 Centre St

623 Centre St, Brockton, MA 02302

Property Photos



IMG_7732



IMG_7733

623 Centre St

623 Centre St, Brockton, MA 02302

Property Photos



IMG_7735

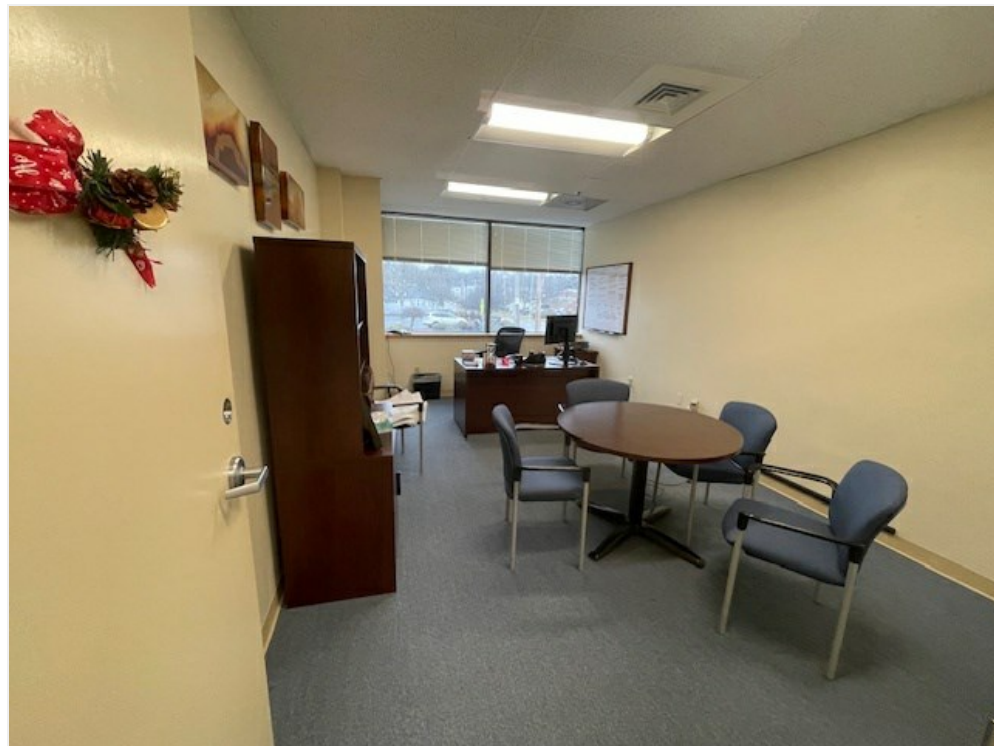


IMG_7737

623 Centre St

623 Centre St, Brockton, MA 02302

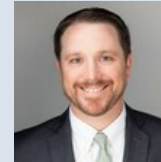
Property Photos



IMG_7738

623 Centre St

623 Centre St, Brockton, MA 02302



Brian Phillips

bphillips@relocationnewengland.com

(781) 974-8134

RE/MAX Partners

44 Park St

Andover, MA 01810



RE/MAX[®]