



# For Sublease

527 N Maple Street  
Murfreesboro, TN

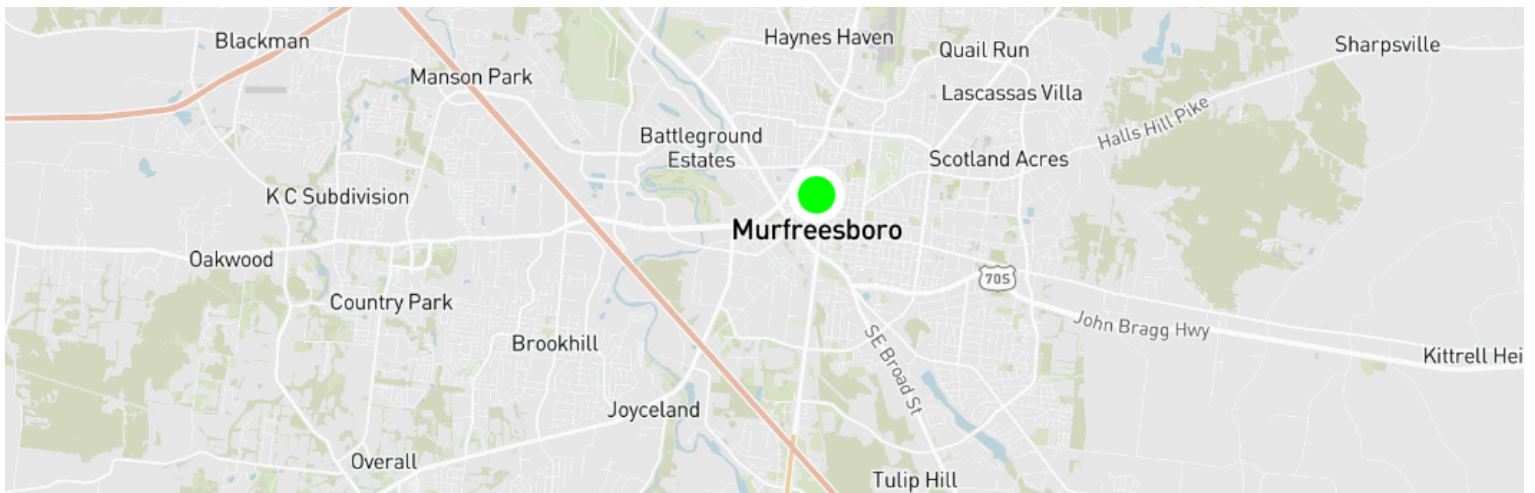
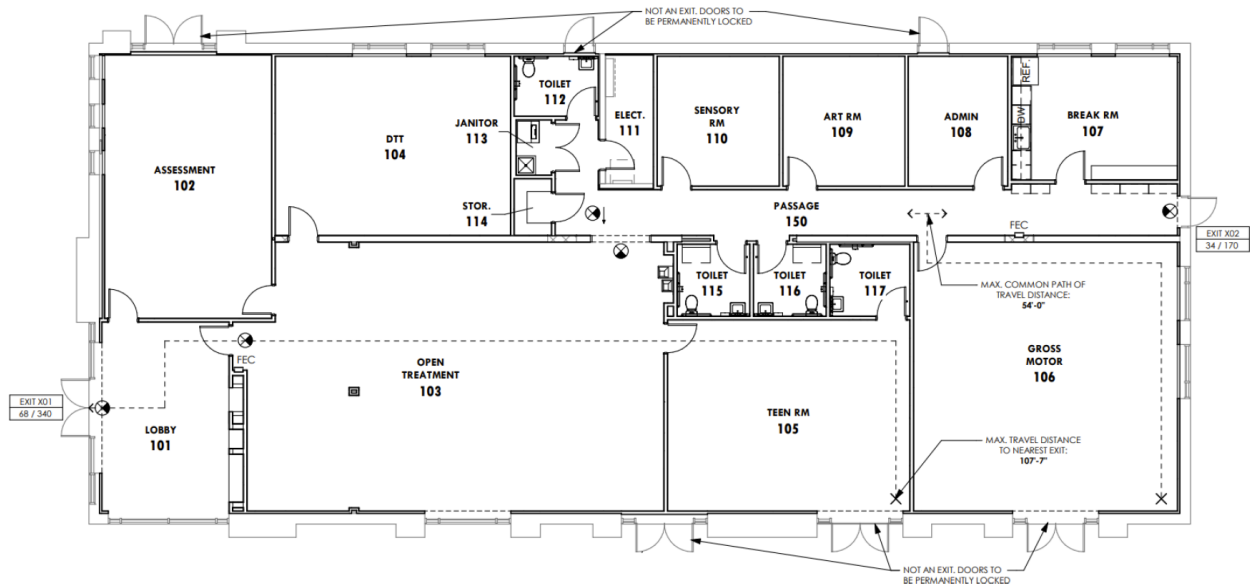
5,784 RSF



## Building Highlights

- Located in the heart of downtown Murfreesboro
- Stand-alone single tenant building
- Close proximity to MTSU and major thoroughfares (Broad St. and Hwy 96)
- Multiple points of ingress/egress
- Clean, fresh exterior aesthetic
- Former kids' autism therapy space
- LXD: 5/31/2030

## Floorplan





# Pictures



Jimmy Armistead  
Vice President  
615.491.1571  
[jimmy.armistead@jll.com](mailto:jimmy.armistead@jll.com)