

4275
S BURNHAM AVE
LAS VEGAS, NV 89119

**DESERT SPRINGS
MEDICAL PLAZA II
MEDICAL OFFICE
FOR LEASE**

**SUITES RANGING FROM
294 SF - 6,213 SF**

 **SUITE 230 TOUR**

 **SUITE 330 TOUR**



MIKE TYMCZYN

VICE PRESIDENT
702.216.2371 **DIRECT**
miket@dcghealthcare.com
BS.0147041



HEALTHCARE



PROPERTY HIGHLIGHTS

- Turnkey suites available
- Tenant improvement allowances available
- Located in the Flamingo office corridor
- Current specialties include: **Cardiology - Outpatient Surgery Center - Laboratory - Internal Medicine**



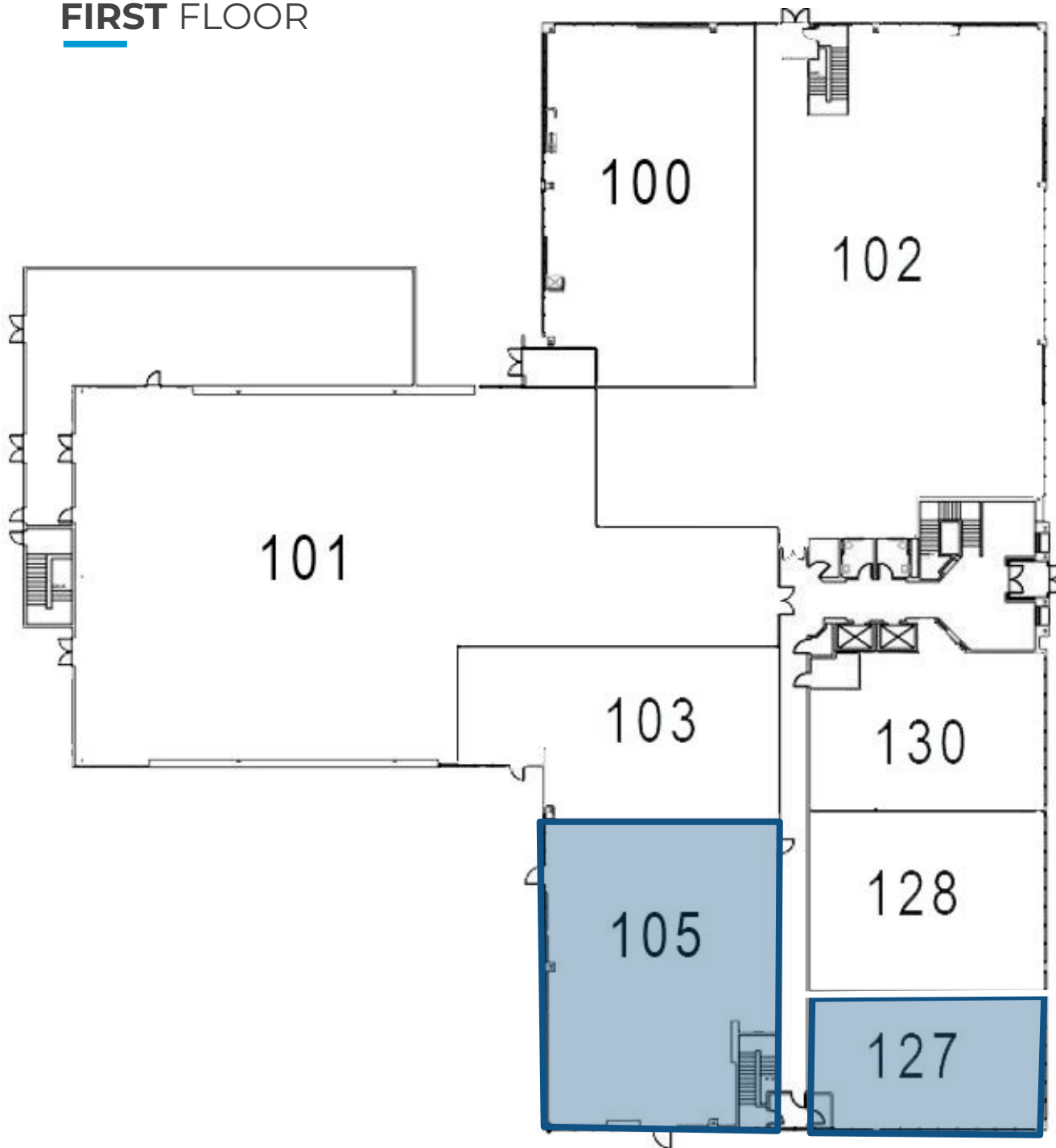
BURNHAM AVE



DESERT SPRINGS MEDICAL PLAZA II



FIRST FLOOR



AVAILABLE SUITES

SUITE 105	3,762 SF
SUITE 127	1,935 SF

DESERT SPRINGS MEDICAL PLAZA II

SUITE 105

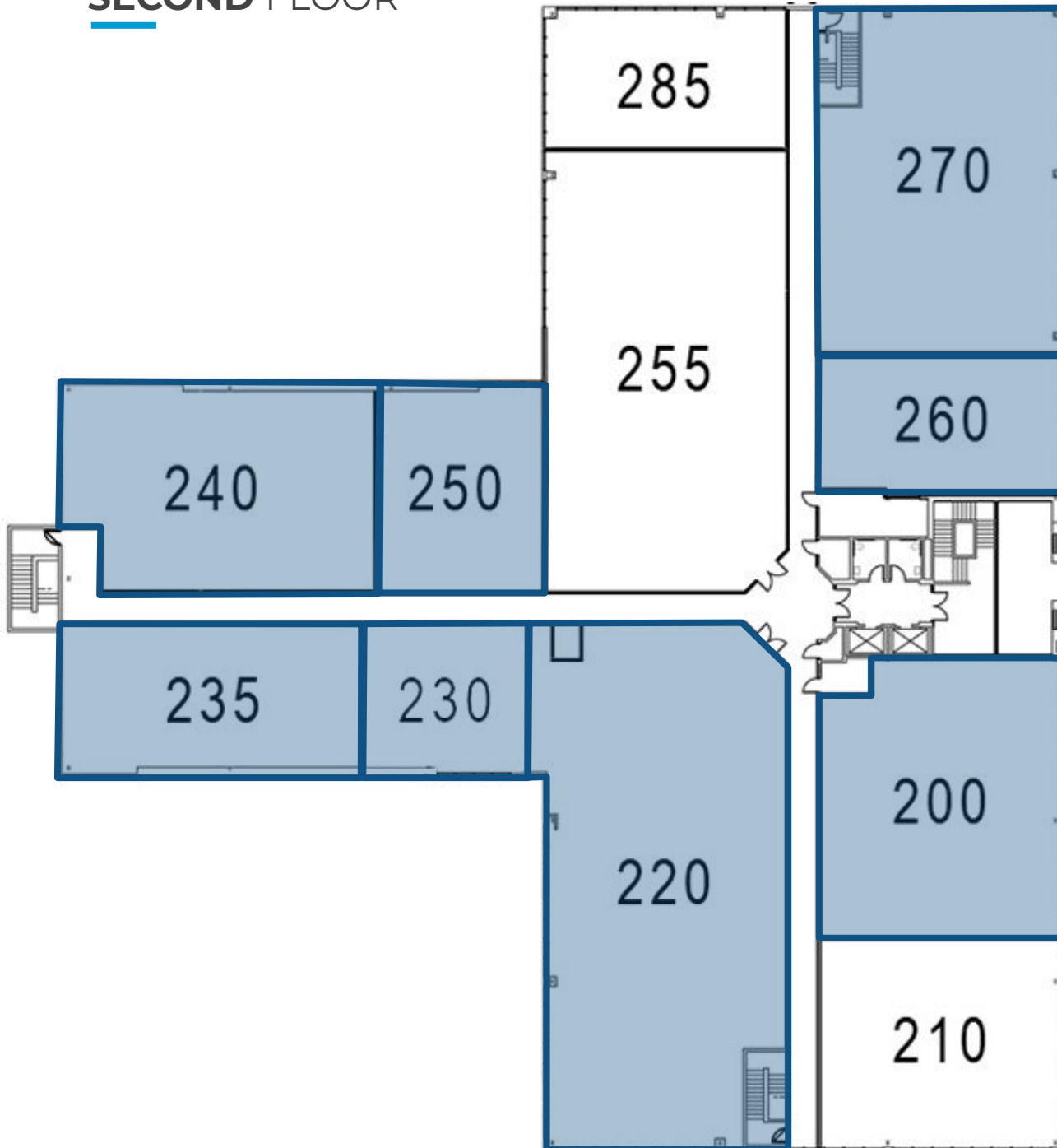


DESERT SPRINGS MEDICAL PLAZA II

SUITE 128



SECOND FLOOR

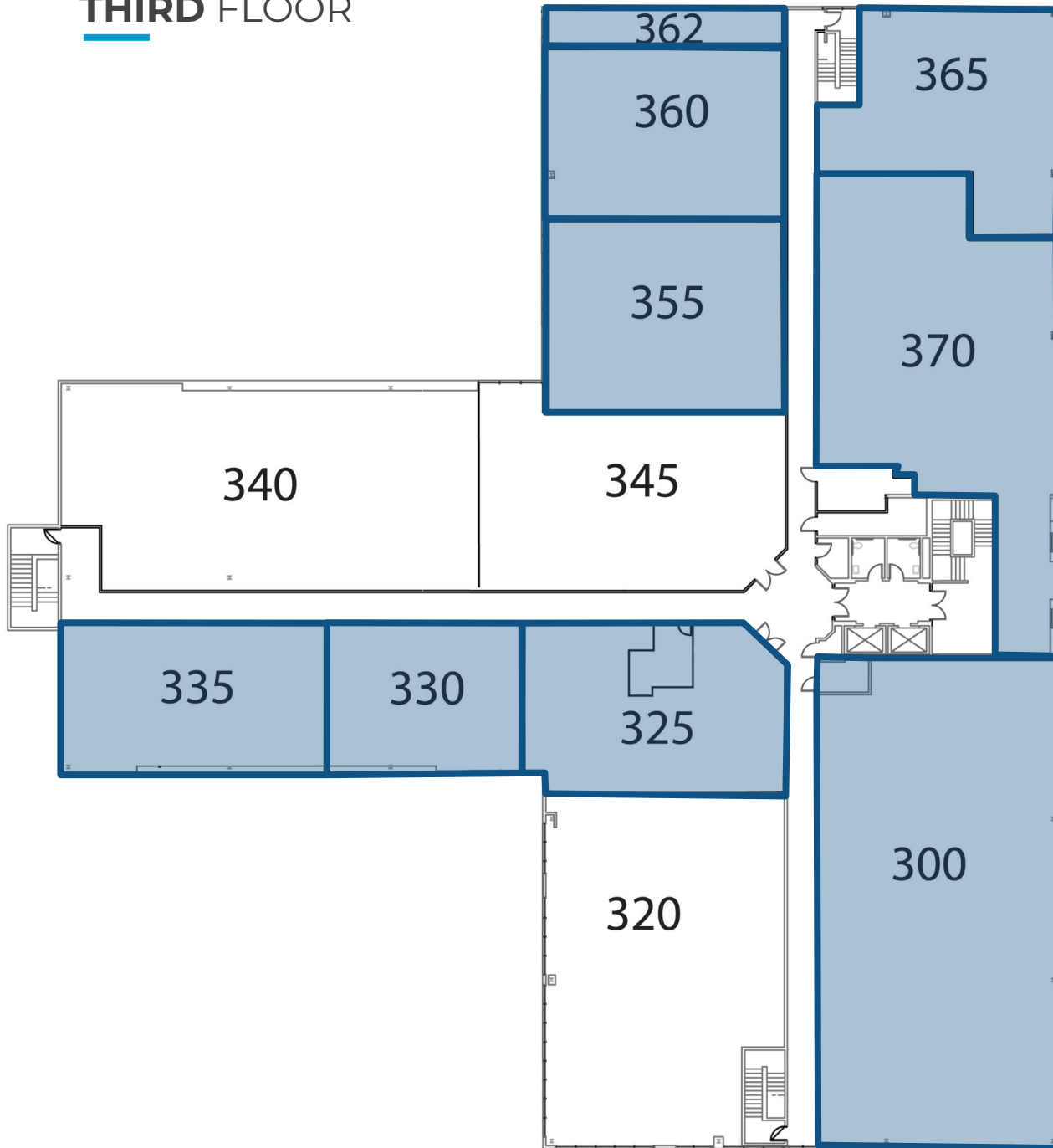


AVAILABLE SUITES

SUITE 200	2,675 SF
SUITE 220	6,213 SF
SUITE 230	1,375 SF
SUITE 235	2,162 SF
SUITE 240	3,097 SF
SUITE 250	1,902 SF
SUITE 260	1,907SF
SUITE 270	3,839 SF

 [SUITE 230 TOUR](#)

THIRD FLOOR



AVAILABLE SUITES

SUITE 300	5,994 SF
SUITE 325	1,998 SF
SUITE 330	1,518 SF
SUITE 335	2,032 SF
SUITE 355	2,053 SF
SUITE 360	2,390 SF
SUITE 362	294 SF
SUITE 365	1,989 SF
SUITE 370	4,031 SF

 [SUITE 330 TOUR](#)