

FOR SALE OR LEASE

1,800 SF Office/Warehouse with Outdoor Storage

**1040 N LINDBERGH BLVD
ST. LOUIS, MO 63132**



CONTACT US

Dan Lesinski

Senior Vice President
+1 314 412 4345
dan.lesinski@colliers.com

Billy Spence

Associate
+1 636 278 0565
billy.spence@colliers.com

Colliers

101 South Hanley Road
Suite 1400
St. Louis, MO 63105
+1 314 863 4447
colliers.com/stlouis

Listing Overview

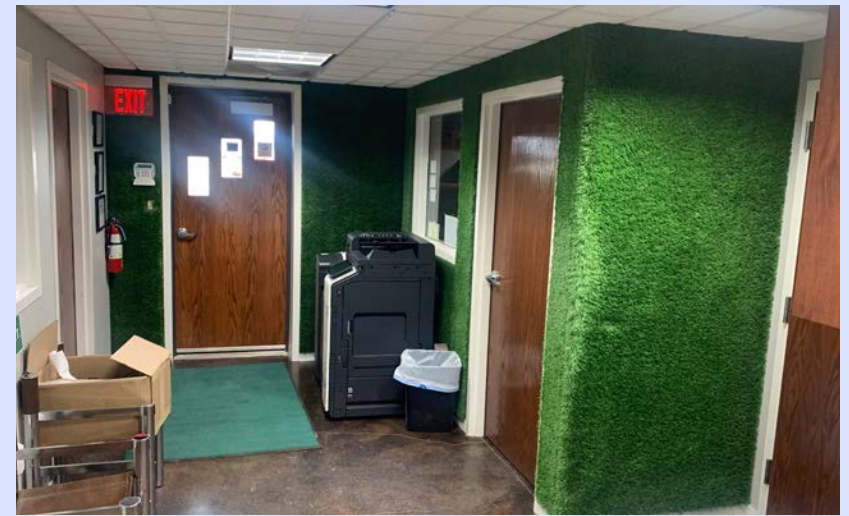
Property Address	1040 N Lindbergh Blvd St. Louis, MO 63132
Total Building SF	1,800 SF
Office SF	900 SF
Warehouse SF	900 SF
Loading	One (1) drive-in
Lot Size	0.85 acres
Year Built	1958
Zoning	Commercial
Roof	Replaced 9/2021

SALE PRICE

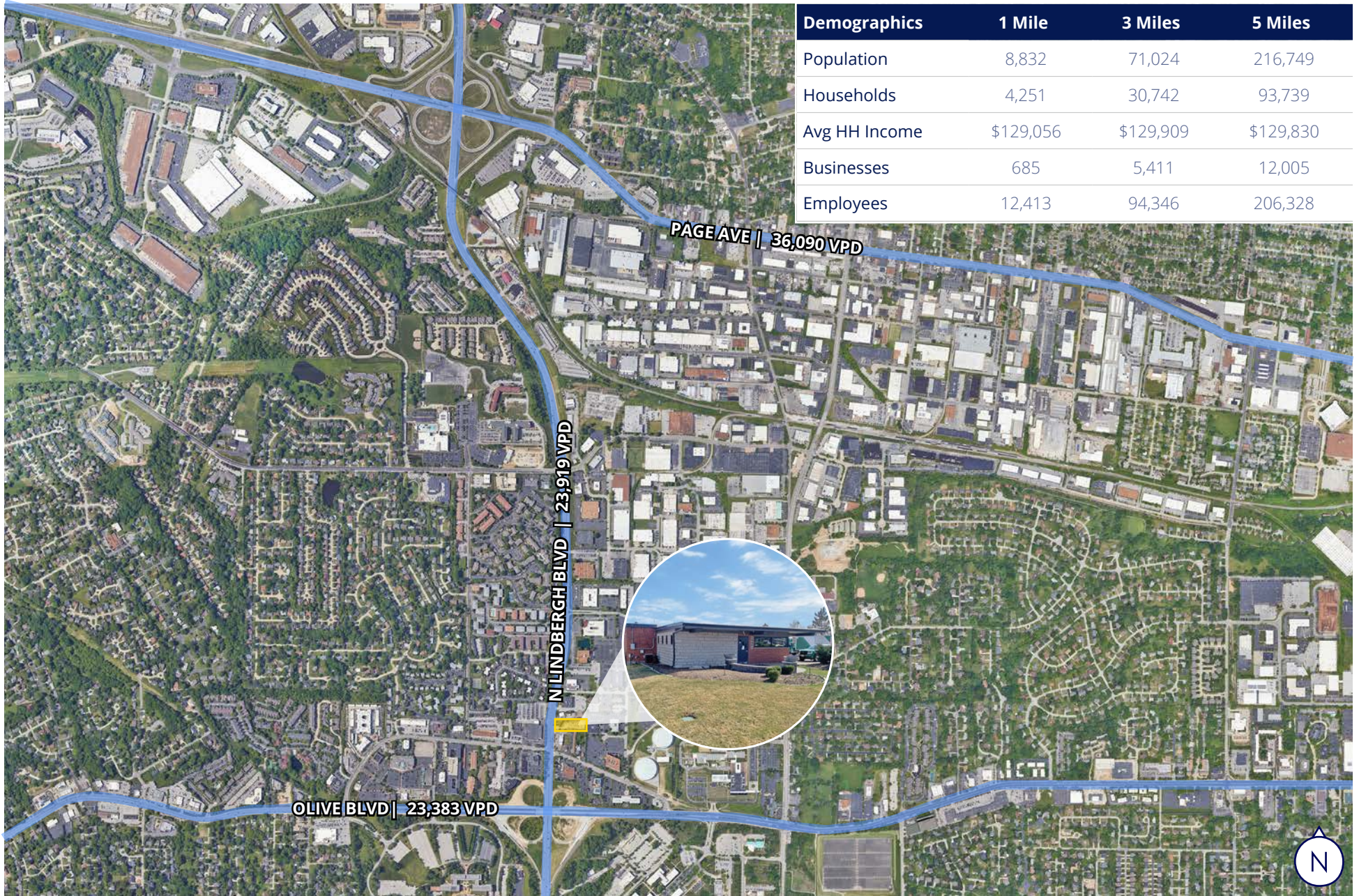
Contact Brokers

LEASE RATE

\$4,500 Per Month, NNN



Location Aerial





CONTACT US

Dan Lesinski
Senior Vice President
+1 314 412 4345
dan.lesinski@colliers.com

Billy Spence
Associate
+1 636 278 0565
billy.spence@colliers.com

Colliers
101 South Hanley Road
Suite 1400
St. Louis, MO 63105
+1 314 863 4447
colliers.com/stlouis