

# OFFICE SPACE FOR LEASE

## NORTH JOHNSON COUNTY OFFICE BUILDING



- Prairie Village 75<sup>th</sup> Street east of Mission Road
- 3500 West 75th Street
- Up to 10,283 square feet available
- Suites in good condition
- Local landlord on-site for property management
- Close proximity to Prairie Village Shopping Center and Corinth
- Signage available
- 2026 Full Service lease rate: \$25.00/RSF



Covered Parking

WINDSOR OFFICE BUILDING  
3500 WEST 75TH STREET  
PRAIRIE VILLAGE, KS 66208



**Lauren Cattanach**  
Cell: (913) 579-8179  
[lauren.cattanach@waterfordproperty.net](mailto:lauren.cattanach@waterfordproperty.net)

**Bob Cattanach**  
Cell: (913) 219-2109  
[bob.cattanach@waterfordproperty.net](mailto:bob.cattanach@waterfordproperty.net)

# AVAILABLE SPACE

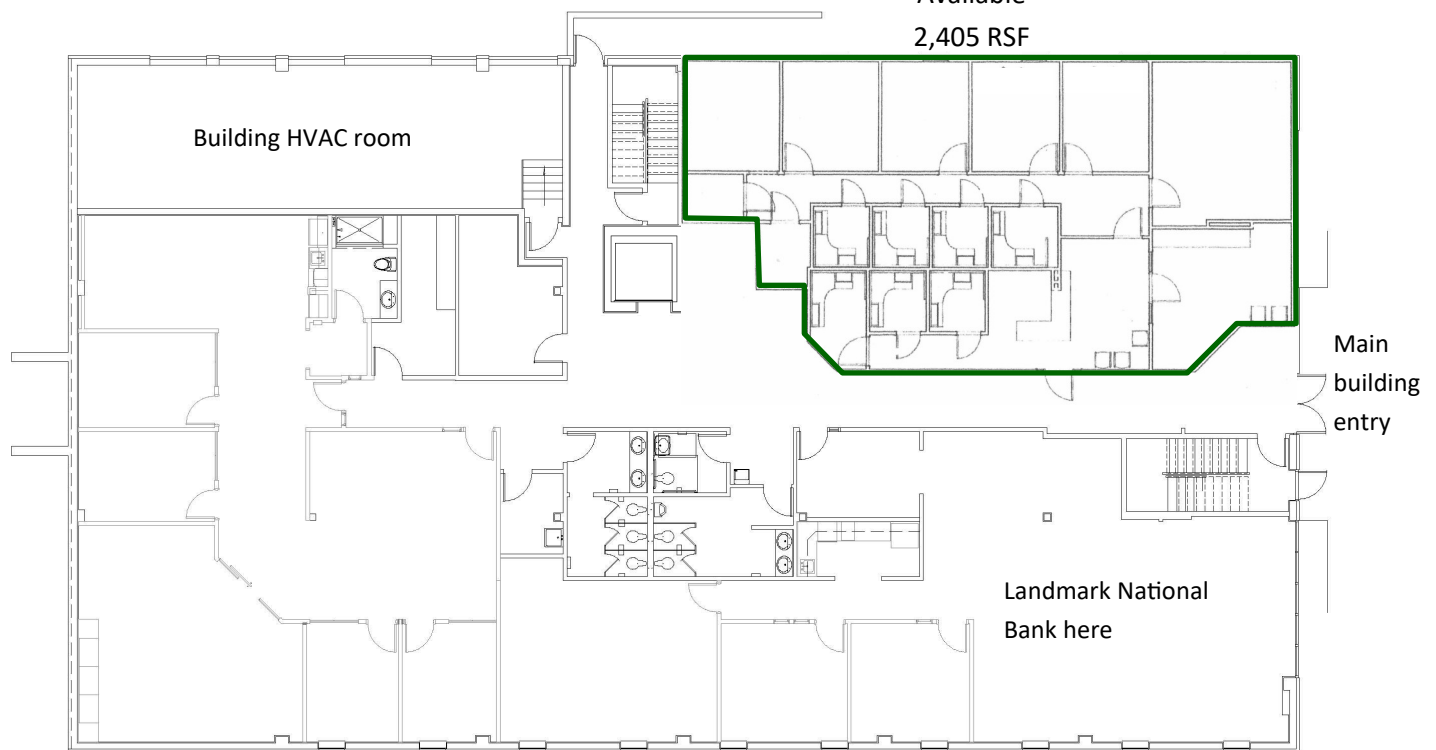
## 1st Floor



Suite 100

Available

2,405 RSF



**WINDSOR OFFICE BUILDING**  
**3500 WEST 75TH STREET**  
**PRAIRIE VILLAGE, KS 66208**



**Lauren Cattanch**  
Cell: (913) 579-8179  
[lauren.cattanch@waterfordproperty.net](mailto:lauren.cattanch@waterfordproperty.net)

**Bob Cattanch**  
Cell: (913) 219-2109

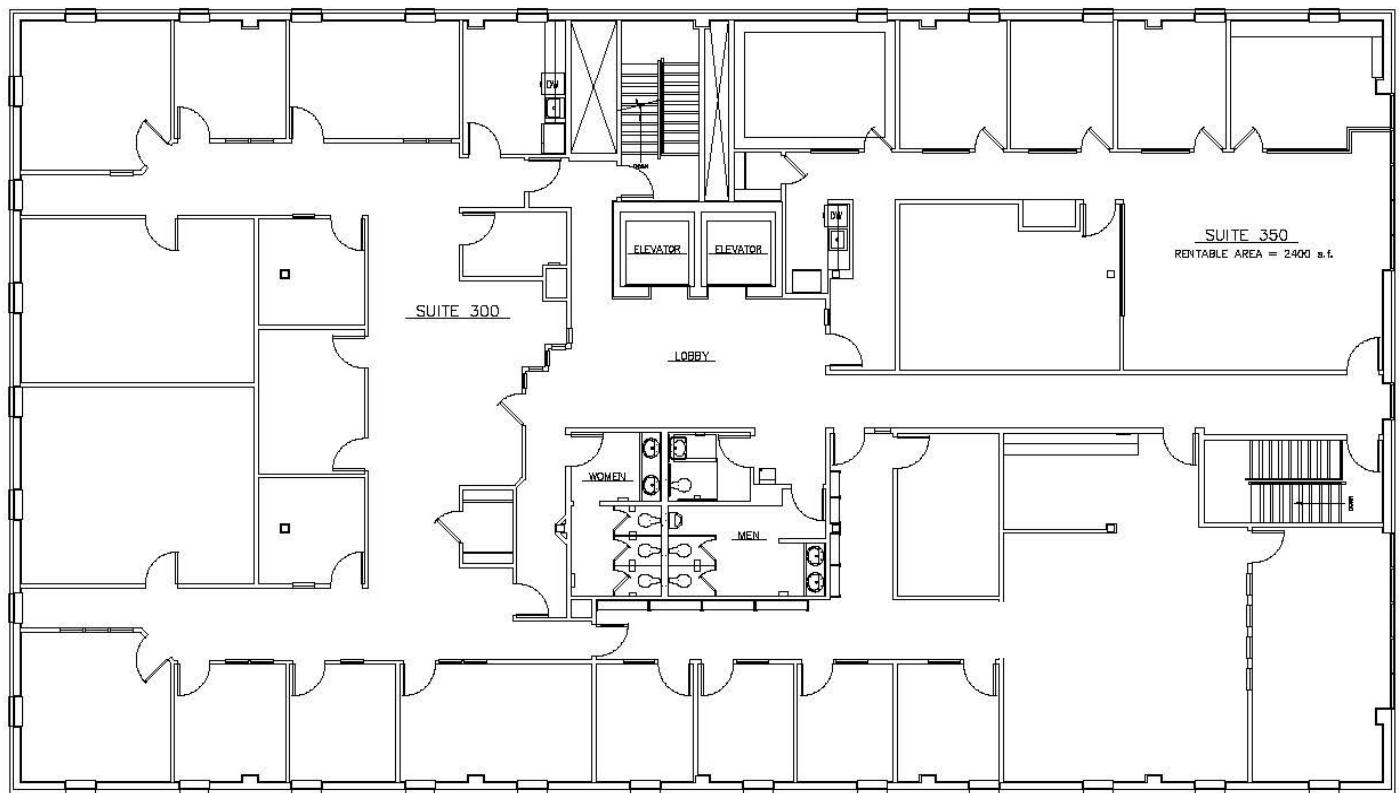
Information furnished regarding property is from sources deemed reliable but no warranty or representation is made as to the accuracy thereof and same is submitted subject to errors, omissions, prior sale or lease or withdrawal, without notice.

# AVAILABLE SPACE

## 3rd Floor

10,283 square feet

- Can be divided
- Good condition
- New windows
- Signage available



WINDSOR OFFICE BUILDING  
3500 WEST 75TH STREET  
PRAIRIE VILLAGE, KS 66208



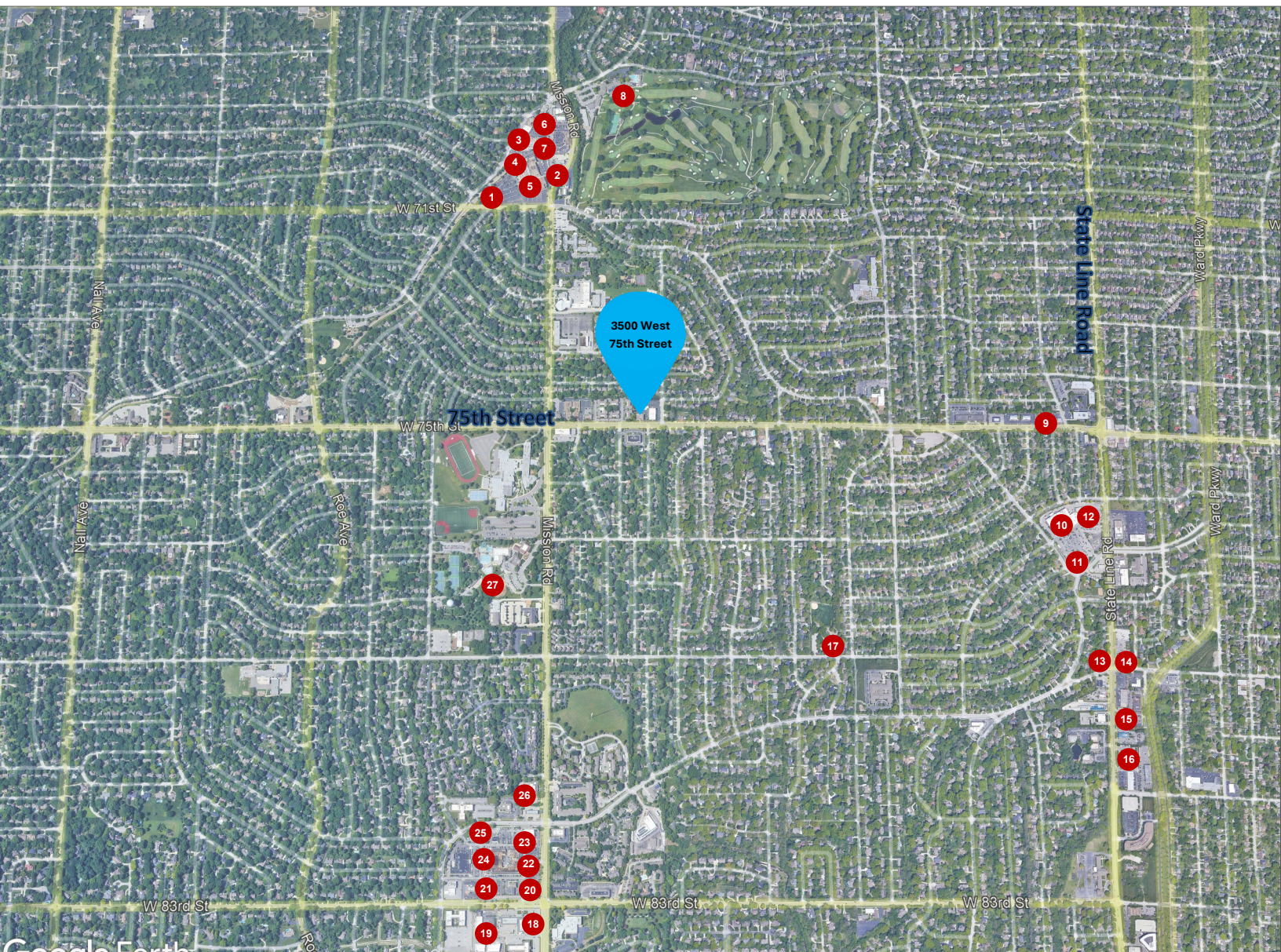
**Lauren Cattnach**  
Cell: (913) 579-8179  
[lauren.cattnach@waterfordproperty.net](mailto:lauren.cattnach@waterfordproperty.net)

**Bob Cattnach**  
Cell: (913) 219-2109

Information furnished regarding property is from sources deemed reliable but no warranty or representation is made as to the accuracy thereof and same is submitted subject to errors, omissions, prior sale or lease or withdrawal, without notice.



# AERIAL MAP & AMENITIES



- |                                |                                     |
|--------------------------------|-------------------------------------|
| 1 BOK Financial                | 15 Culver's                         |
| 2 Caffetteria Modern Café      | 16 QuikTrip                         |
| 3 French Market                | 17 Taliaferro Park                  |
| 4 Goodcents                    | 18 Panera Bread                     |
| 5 Café Provence                | 19 First Watch                      |
| 6 Tavern in the Village        | 20 Johnny's Tavern                  |
| 7 Hen House                    | 21 Taco Republic                    |
| 8 Indian Hills Country Club    | 22 Salty Iguana                     |
| 9 Laura Little's Candy Kitchen | 23 Spin! Pizza                      |
| 10 Hy-Vee                      | 24 BRGR Kitchen + Bar               |
| 11 Jun's                       | 25 Hattie's Fine Coffee             |
| 12 Noodles & Company           | 26 Johnson County Library - Corinth |
| 13 Wellness Aerial Yoga        | 27 Harmon Park & Disc Golf Course   |
| 14 McDonald's                  |                                     |