

Fully Entitled | Land for Sale

16175 Jacqueline Ct  
Morgan Hill, CA

±2.18 Acres

- Rare Morgan Hill Zoning – General Industrial (IG)
- General Plan – Industrial
- APN # 817-32-058
- Fully Entitled for 35,384 SF Industrial/Manufacturing Building
- Sale Price: \$2,850,000



Colliers

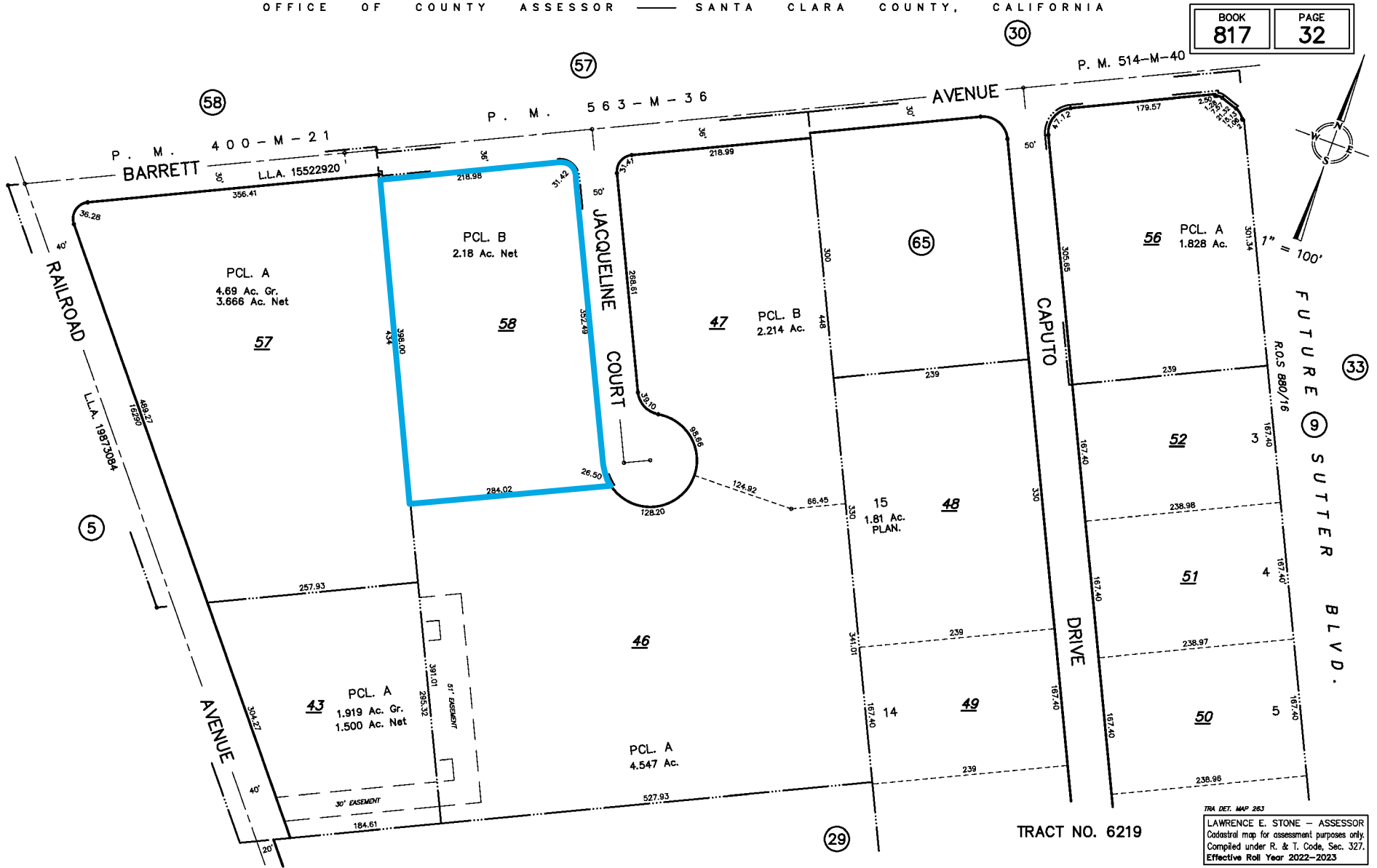
Accelerating success.



# Parcel Map

OFFICE OF COUNTY ASSESSOR — SANTA CLARA COUNTY, CALIFORNIA

BOOK <b>817</b>	PAGE <b>32</b>
--------------------	-------------------



TRACT NO. 6219

TRA DET. MAP 263  
LAWRENCE E. STONE - ASSESSOR  
Cadastral map for assessment purposes only.  
Compiled under R. & T. Code, Sec. 327.  
Effective Roll Year 2022-2023







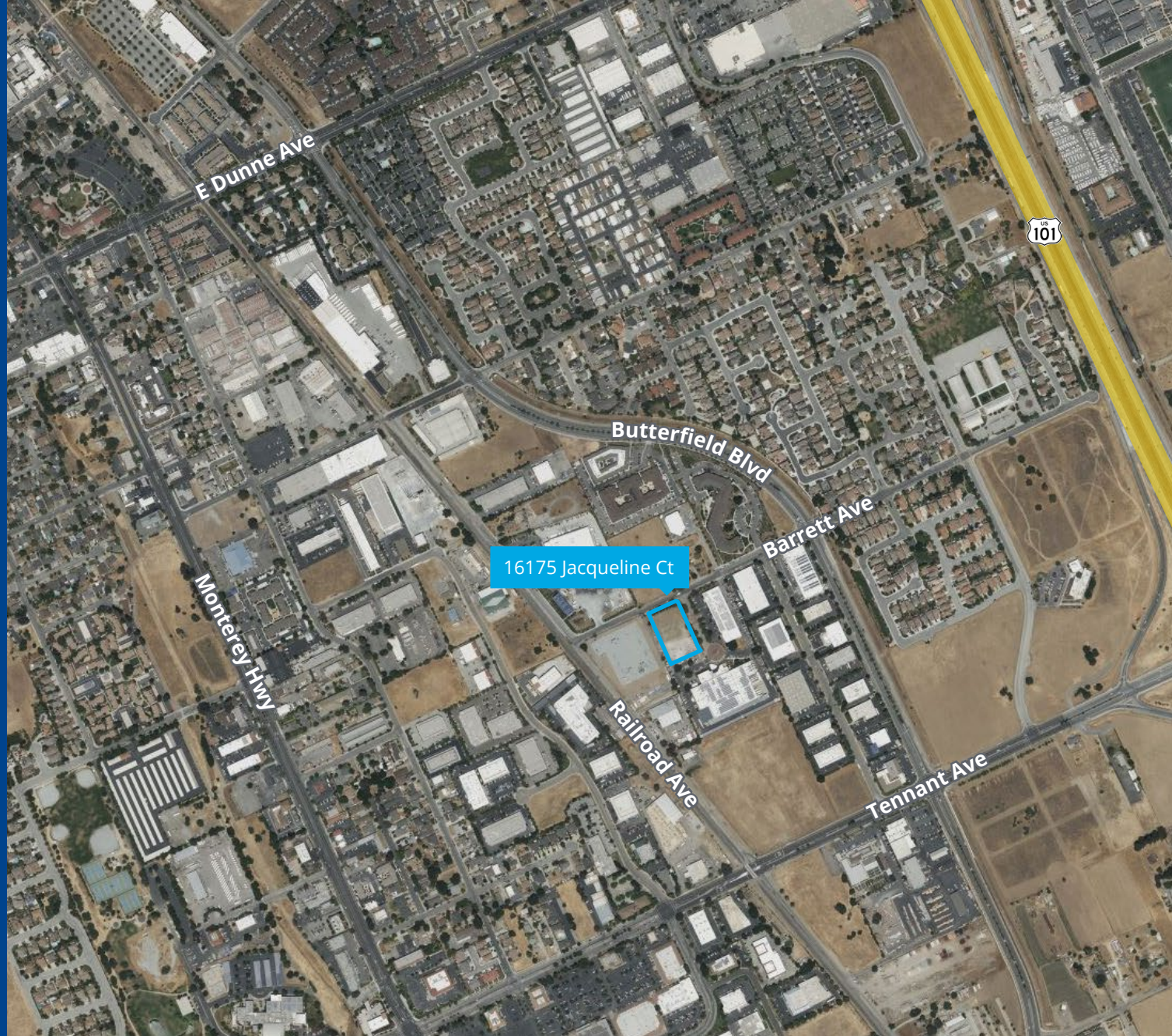
8070 Santa Teresa Blvd  
Suite 220  
Gilroy, CA 95020  
P: +1 408 282 3800  
F: +1 408 282 3855  
colliers.com/siliconvalley

**Jeff Barnes**

Executive Vice President  
+1 408 218 3366  
jeff.barnes@colliers.com  
CA Lic. 00883278

**Matt vanKeulen**

Senior Vice President  
+1 408 930 9236  
matt.vankeulen@colliers.com  
CA Lic. 01899003



This document has been prepared by Colliers International for advertising and general information only. Colliers International makes no guarantees, representations or warranties of any kind, expressed or implied, regarding the information including, but not limited to, warranties of content, accuracy and reliability. Any interested party should undertake their own inquiries as to the accuracy of the information. Colliers International excludes unequivocally all inferred or implied terms, conditions and warranties arising out of this document and excludes all liability for loss and damages arising there from. This publication is the copyrighted property of Colliers International and/or its licensor(s). ©2024. All rights reserved.