

## 1,031 SF OFFICE CONDOMINIUM FOR LEASE

### 1150 EXECUTIVE CIRCLE SUITE 4 CARY, NC 27511



1,031 SF office available for immediate lease.

**Lease Rate:** \$24.00 SF. / \$2,062.00 Monthly.

Tenant responsible for electricity, water, gas, HVAC service agreement, and voice/data. Landlord pays dues, taxes and park assessments.

**Layout:** Reception with kitchenette, four offices and restroom

- ◆ Windows on two sides. (three windowed offices)
- ◆ Light and bright work environment.
- ◆ Wood laminate flooring throughout.
- ◆ Shiplap ceiling throughout.
- ◆ Ground level entry.
- ◆ Parking in front of building.
- ◆ Built: 1995. Remodeled 2020.
- ◆ Zoned: PDD Major.
- ◆ Restaurants, retail, and banks close by.
- ◆ Central to major traffic corridors.

Money Magazine has named Cary, North Carolina the hottest town in the East and one of six "Hottest Towns in America." The publication also recognized Cary as one of the Best Small Cities in America, ranking an impressive fifth on one of the magazine's annual lists of "Best Places to Live."



FOR MORE INFORMATION AND A TOUR PLEASE CONTACT

ANNA ACERRA  
919 349 5539

[ANNA@NEARICOLEMAN.COM](mailto:ANNA@NEARICOLEMAN.COM)

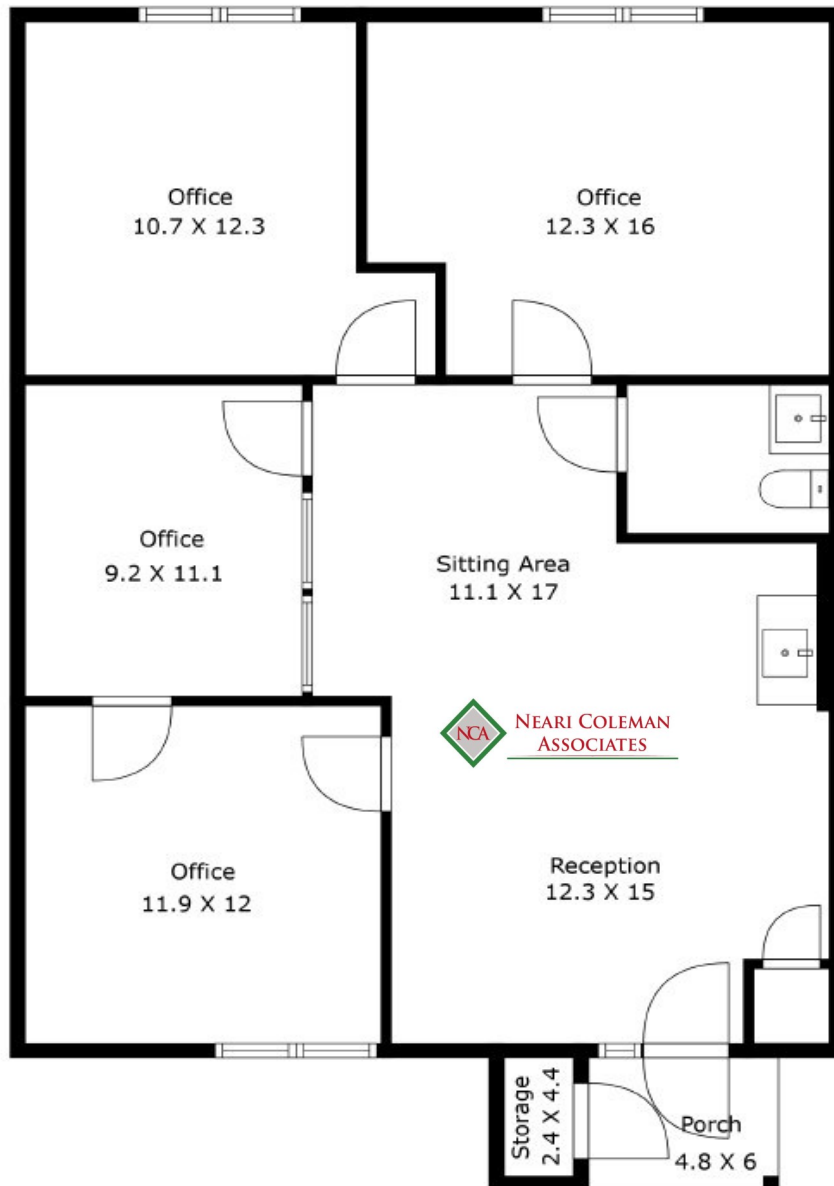
115 S ST MARY'S STREET  
RALEIGH, NC 27603



<http://nearicoleman.com>

<https://acerracommercial.com>

1150 Executive Circle, Unit 4, Cary



**1150 Executive Circle**

**Suite 4**

**Cary, NC 27511**

**\$24.00 SF / MG**

FOR MORE INFORMATION AND A TOUR PLEASE CONTACT

ANNA ACERRA  
919 349 5539

[ANNA@NEARICOLEMAN.COM](mailto:ANNA@NEARICOLEMAN.COM)

115 S ST MARY'S STREET  
RALEIGH, NC 27603



<http://nearicoleman.com>

<https://acerracommercial.com>





**FOR MORE INFORMATION AND A TOUR PLEASE CONTACT**

**ANNA ACERRA**  
919 349 5539  
[ANNA@NEARICOLEMAN.COM](mailto:ANNA@NEARICOLEMAN.COM)  
115 S ST MARY'S STREET  
RALEIGH, NC 27603



<http://nearicoleman.com>

<https://acerracommercial.com>